



SHESTAKOV

Yacht Sales

## GRAND COUPE - REGAL



**Builder:**

Regal

**Model:**

Grand Coupe

**LOA:**

42' 0" (12.80 m)

**Beam:**

13' 0" (3.96 m)

**Max Draft:**

11' 3" (3.42 m)

**Cruise Speed:**

30 kn / 30 mph

**Max Speed:**

36 kn / 36 mph

**Water Capacity:**

73 Gallons

**Fuel Capacity:**

258 Gallons

**Total Heads:**

2

**Hull Material:**

Fiberglass and Plastic Yachts

**Deck Material:**

Fiberglass

If you would like to buy a yacht **GRAND COUPE - Regal** or would like help, please call +1(954)274-4435 or visit [shestakovyachtsales.com](http://shestakovyachtsales.com)

---

# TABLE OF CONTENTS

---

<b>OVERVIEW .....</b>	<b>3</b>
<b>Selecting a Grand Coupe .....</b>	<b>3</b>
<b>Features of the Model .....</b>	<b>3</b>
<b>Technical Specifications .....</b>	<b>4</b>
<b>Pricing and Ordering .....</b>	<b>4</b>
<b>Questions and Answers .....</b>	<b>4</b>
<b>Owner Experience Review .....</b>	<b>5</b>
<b>Pros and Cons .....</b>	<b>6</b>
<b>Comparison with Other Models .....</b>	<b>6</b>
<b>SPECIFICATIONS .....</b>	<b>8</b>
<b>GALLERY .....</b>	<b>9</b>
<b>CONTACTS .....</b>	<b>14</b>

# OVERVIEW

---

Represented by Andrey Shestakov and the team at Shestakov Yacht Sales, the Grand Coupe from Regal is a flexible and capable motor yacht in the motor yacht category, constructed on a robust fiberglass and plastic foundation. Measuring 42 ft (12.8 m) overall with a 13 ft (3.96 m) beam, it is driven by twin Volvo inboard diesel engines and includes two heads, offering a blend of confident on-water performance and sensible liveaboard amenities for cruising.

## Selecting a Grand Coupe

---

Opt for the Grand Coupe if you want a boat that balances a manageable footprint with strong propulsion. Its 42 ft (12.8 m) LOA and 13 ft (3.96 m) beam make it compatible with most marina slips, while the twin Volvo diesel inboards deliver a comfortable 30 kn (30 mph) cruise and a top speed around 36 kn (36 mph). As a contemporary motor yacht within the motor yacht segment, it combines fast cruising capability with the convenience of two heads and substantial fuel and fresh water tanks for extended stays aboard.

## Features of the Model

---

- Performance-focused cruising with a 30 kn (30 mph) cruise and a 36 kn (36 mph) top speed
- Twin Volvo diesel inboards providing reliable and economical propulsion
- fiberglass and plastic hull paired with a fiberglass deck for longevity and straightforward care
- 42 ft LOA and a 13 ft beam offering roomy circulation on deck and below
- Two heads, plus 258 gal fuel and 73 gal water capacities to support longer passages

## Technical Specifications

---

- LOA: 42 ft (12.8 m)
- Beam: 13 ft (3.96 m)
- Draft (max): 11.209 ft (3.4166 m)
- Cruise speed: 30 kn (30 mph)
- Maximum speed: 36 kn (36 mph)
- Engines: 2 x Volvo, Inboard, Diesel
- Fuel capacity: 258 gal
- Water capacity: 73 gal
- Heads: 2
- Hull: fiberglass and plastic
- Deck: Fiberglass
- Type: motor yacht / motor yacht

## Pricing and Ordering

---

For up-to-date availability, pricing details, and to schedule a private viewing or sea trial of the Grand Coupe, please contact Andrey Shestakov at Shestakov Yacht Sales. Our brokerage team will walk you through the specs, inspections, and delivery options that match your cruising intentions.

## Questions and Answers

---

Q: What is the **type** of the Grand Coupe? A: The vessel is classified as a motor yacht within the motor yacht segment, constructed on a fiberglass and plastic hull by Regal.

Q: What is the **speed** performance? A: The Grand Coupe typically cruises at **30 kn (30 mph)** and has a maximum speed of about **36 kn (36 mph)** .

Q: What are the key **dimensions** ? A: Overall length is **42 ft (12.8 m)** , the beam measures **13 ft (3.96 m)** , and the maximum draft is **11.209 ft (3.4166 m)** .

Q: What **engines** power the yacht and what is the **fuel** capacity? A: Power comes from **2 Volvo Inboard Diesel** engines and the yacht carries **258 gal** of fuel.

Q: How many **heads** are onboard and what is the **water** capacity? A: There are **2 heads** aboard and the fresh water tank holds **73 gal** . For full specifications and purchasing guidance, contact Andrey Shestakov and Shestakov Yacht Sales.

## Owner Experience Review

---

Owners commonly use the Grand Coupe from Regal as a true multipurpose platform: it serves well for family cruises and overnighting with two-stateroom arrangements, air conditioning, and a full head, while also functioning as an easygoing dayboat thanks to a retractable hardtop, a spacious cockpit, and an integrated swim platform. The uninterrupted floorplan from salon to cockpit enhances communal areas, and the sunroof combined with a full canvas enclosure extends comfortable use across different weather conditions.

Galley setups are aimed at short-term cruising needs, with common listings noting refrigerators, a microwave, and a grill; several boats in the model range see use in charter service or as captained rentals. For owners who have IPS installations, reports describe these boats as smooth, fuel-efficient, and very maneuverable. The joystick control is frequently highlighted for simplifying tight-quarters handling—many owners joke that joystick docking feels as intuitive as playing a video game when placing a roughly 20,000 lb boat into a narrow slip.

Ownership feedback also calls out IPS-related service realities. Multiple owner

forums and threads reference Volvo Penta IPS pod-seal or water-intrusion problems and the subsequent repairs, plus occasional joystick or steering glitches on IPS 500/600 setups. Regular maintenance tasks such as servicing raw-water pumps and replacing bellows are common, and when electronic or pod issues occur, dealer or Volvo assistance is usually necessary and can carry a significant cost. Documentation and broker notes emphasize sticking to IPS inspection schedules and handling warranty transfers carefully.

## Pros and Cons

- Single-level layout creates maximized living and entertaining areas for family and guests.
- Retractable hardtop/sunroof and full canvas enclosure enable comfortable use across varied weather.
- IPS joystick control simplifies docking and tight-quarters maneuvering for most operators.
- Reports of Volvo Penta IPS pod-seal water ingress can result in repair needs.
- Occasional joystick or steering faults on IPS systems may require dealer intervention.
- Routine IPS components (raw-water pumps and bellows) contribute to ongoing maintenance expenses.

## Comparison with Other Models

Model	LOA	Beam	Draft	Speed (Cruising/Max)	Gross Tonnage
Grand Coupe	42' 0" (12.80 m)	13' 0" (3.96 m)	11' 3" (3.42 m)	30 kn / 36 kn	
260 OBX	26' 0" (8.08 m)	8' 0" (2.59 m)	4' 1" (1.25 m) – 9' 10" (3 m)		
2665 Commodore	30' 0" (9.27 m)	8' 0" (2.56 m)	9' 10" (3 m)	24 kn / 34 kn	

2000 ESX Bowrider	20' 0" (6.12 m)	8' 0" (2.59 m)			
42 sport coupe	42' 0" (12.80 m)	12' 0" (3.76 m)			
Commodore 3060	32' 0" (9.75 m)	10' 0" (3.12 m)			
3550 Cuddy	34' 0" (10.57 m)	11' 0" (3.45 m)	5' 9" (1.75 m) – 9' 7" (2.92 m)		
42 XO	42' 0" (12.85 m)	13' 0" (3.96 m)	12' 0" (3.67 m)	34 kn / 50 kn	
36 XO	36' 0" (10.97 m)				
Express	31' 0" (9.73 m)	11' 0" (3.40 m)	9' 7" (2.92 m)		

# SPECIFICATIONS

---

**LOA:**

42' 0" (12.80 m)

**Max Draft:**

11' 3" (3.42 m)

**Cruise Speed:**

30 kn / 30 mph

**Water Capacity:**

73 Gallons

**Total Heads:**

2

**Hull Material:**

Fiberglass and Plastic Yachts

**Engines:**

2

**Engine Type:**

Inboard

**Beam:**

13' 0" (3.96 m)

**Max Speed:**

36 kn / 36 mph

**Fuel Capacity:**

258 Gallons

**Deck Material:**

Fiberglass

**Manufacturer:**

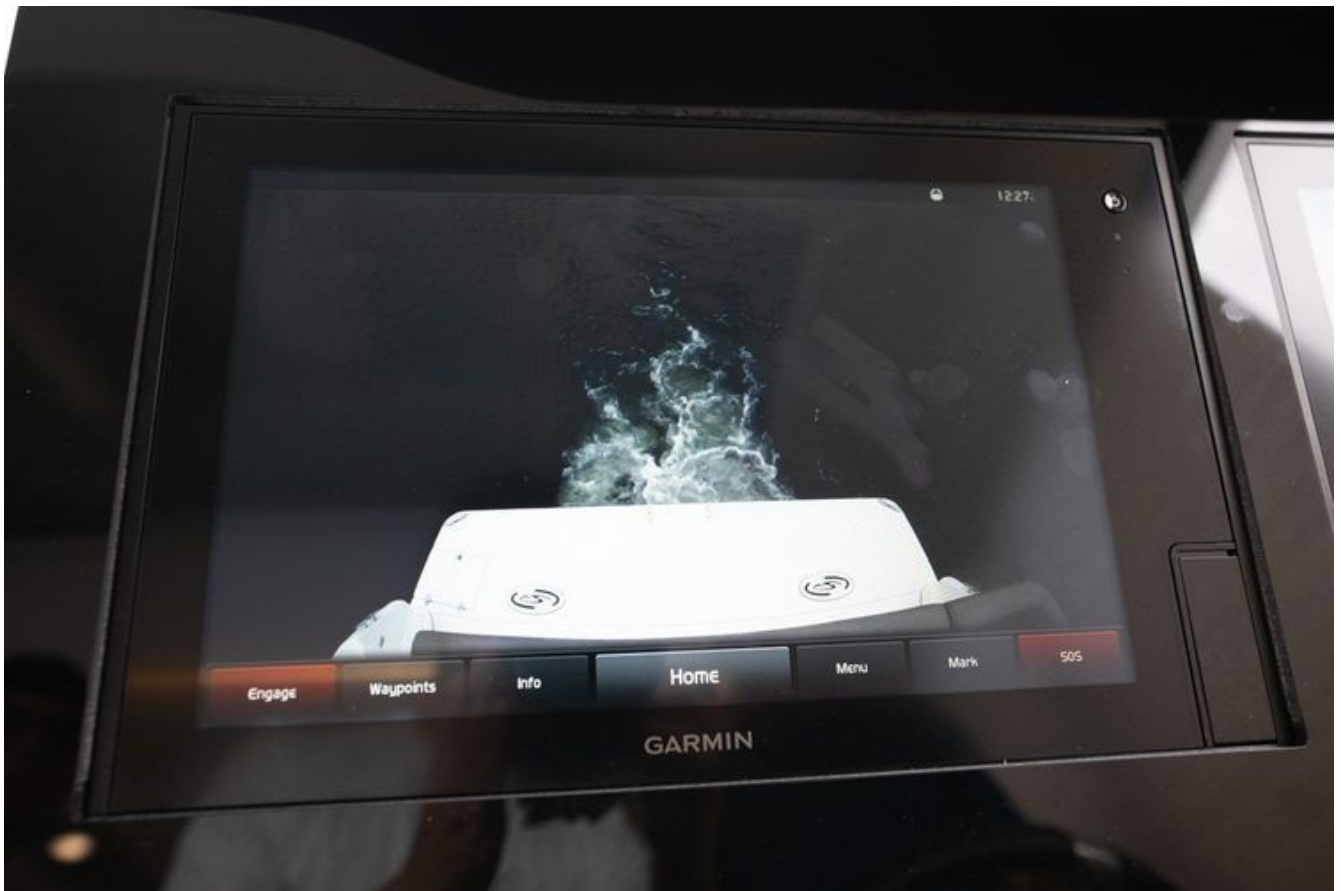
Volvo

**Fuel Type:**

Diesel

# GALLERY











# CONTACTS

---

Shestakov Yacht Sales is a brokerage company specializing in the sale and service of yachts worldwide. The company offers services for buying and selling both new and used motor yachts, sailing vessels, and luxury superyachts. They also provide yacht registration, insurance, technical maintenance, crew selection, and charter organization services across the U.S., Canada, Latin America, the Caribbean, and the Bahamas.

The founder and lead broker of the company is Andrey Shestakov, a licensed and certified expert with extensive experience in marine engineering and shipbuilding.

The company has an extensive network of partnerships with major yacht manufacturers worldwide and provides services in multiple languages, including Russian, Ukrainian, Spanish, and English. The office is in Dania Beach, Florida, USA.

For more information and to view available yachts, you can visit the company's official website: <https://shestakovyachtsales.com>

## Contact details

---

**Phone:** +1(954)274-4435

**Email:** [andrey@shestakovyachtsales.com](mailto:andrey@shestakovyachtsales.com)

## Address

---



1380 Weeping Willow Way, Hollywood,  
Florida 33019