



SHESTAKOV

Yacht Sales

GR SESSANTATRE – RIZZARDI



Builder:

RIZZARDI

Model:

GR SESSANTATRE

LOA:

63' 0" (19.30 m)

Beam:

21' 0" (6.45 m)

Hull Material:

Fiberglass and Plastic Yachts

Deck Material:

Fiberglass

Engines:

1

Manufacturer:

MAN

If you would like to buy a yacht **GR SESSANTATRE – RIZZARDI** or would like help, please call +1(954)274-4435 or visit shestakovyachtsales.com

TABLE OF CONTENTS

OVERVIEW	3
Selecting a GR SESSANTATRE	3
Features of the Model	3
Technical Specifications	4
Pricing and Ordering	4
Questions and Answers	4
Owner Experience Review	5
Pros and Cons	6
Comparison with Other Models	6
SPECIFICATIONS	7
GALLERY	8
CONTACTS	13

OVERVIEW

Presented by Shestakov Yacht Sales and broker Andrey Shestakov, the GR SESSANTATRE from RIZZARDI is an elegant motor yacht positioned in the mega-yacht segment and built using proven fiberglass and plastic methods. Measuring 63 ft (19.3 m) overall with a generous 21 ft (6.45 m) beam, it offers a balanced mix of interior volume, deck space, and stylish lines, driven by a reliable MAN propulsion package.

Selecting a GR SESSANTATRE

Opting for the GR SESSANTATRE prioritizes contemporary Italian styling from RIZZARDI, roomy deck and cabin arrangements, and the simplicity of a single-engine layout. As a motor yacht that also occupies the mega-yacht class, it appeals to owners who want a vessel around 63 feet with a wide 21-foot beam for comfortable cruising and anchoring. Coordinate directly with Shestakov Yacht Sales and Andrey Shestakov to tailor the yacht's setup to your cruising needs and personal tastes.

Features of the Model

- Builder pedigree: RIZZARDI known for Italian craftsmanship and attention to detail.
- Dimensions that matter: 63 ft (19.3 m) LOA combined with a 21 ft (6.45 m) beam creates spacious living and social areas.
- Construction confidence: fiberglass and plastic hull complemented by a Fiberglass deck.
- Powertrain: Single-engine configuration equipped with MAN for straightforward operation and maintenance routines.
- Versatile platform for customization through Shestakov Yacht Sales to align

finishes, systems, and layout with owner preferences.

Technical Specifications

- Builder: RIZZARDI
- Model: GR SESSANTATRE
- Category: motor yacht; mega-yacht class
- Hull: fiberglass and plastic
- Deck material: Fiberglass
- LOA: 63 ft (19.3 m)
- Beam: 21 ft (6.45 m)
- Engines: 1 x MAN

Pricing and Ordering

For up-to-date pricing, delivery schedules, and availability on the GR SESSANTATRE, contact Andrey Shestakov at Shestakov Yacht Sales. Our brokerage team will assist with detailed specifications, optional equipment, and the necessary paperwork, and can arrange inspections or sea trials where practical.

Questions and Answers

Q: What are the exact dimensions of the GR SESSANTATRE? A: The yacht's **LOA** is 63 ft (19.3 m) and the **beam** is 21 ft (6.45 m).

Q: What powers the yacht, and how many engines are installed? A: The **powertrain** is a single-engine setup with **MAN** : 1 x MAN.

Q: What are the hull and deck materials? A: The **hull** is in the fiberglass and plastic class, and the **deck** is Fiberglass.

Q: How is the yacht categorized? A: It is a motor yacht within the broader mega-yacht class segment.

Q: How do I get pricing and place an order? A: Reach out to **Andrey Shestakov** at **Shestakov Yacht Sales** for **pricing** , **availability** , and to arrange viewings or sea trials where possible.

Owner Experience Review

Owners favor the GR SESSANTATRE from RIZZARDI for its Mediterranean-friendly day-boat character and ability to host open-air gatherings. The roomy cockpit and a purpose-built Opac bimini that can stay deployed at cruising speeds offer sun protection while preserving that 'outdoor' yachting sensation. For short cruises, the 3-cabin plus crew layout — featuring a full-beam aft VIP — plus a tender lift make multi-day coastal passages convenient for family use.

Underway, the model's GR hull heritage (stemming from the earlier 63) is credited with steady seakeeping. With MAN V8 installations rated in the 1200–1300 hp band, owner reports and marine press note cruise speeds around 32–33 knots and peak runs near 38–40 knots. Some buyers intentionally accept lower top-end numbers in favor of extended range and reduced noise, opting for twin Nanni 900s to "live the essence of cruising."

Routine upkeep follows a conventional shaft-line arrangement with service access typical for a 19-meter platform; bespoke options can alter service intervals and component locations. There are no widely reported systemic defects, but production has been limited — the third hull was launched in 2025 — so comprehensive long-term ownership insight is still developing.

Pros and Cons

- Proven GR hull lineage delivers reassuring seakeeping and a confident ride.
- Strong performance with MAN V8s: about 32–33 knot cruise and ~38–40 knot top speed.
- Versatile 3 cabin plus crew layout and an Opac bimini suit both family cruising and open air dayboating.
- Long term ownership data is limited due to the model's low production to date.
- Choosing Nanni 900s favors economy and quiet but reduces top end speed.
- As an open yacht, weather protection relies on a bimini rather than a full enclosure.

Comparison with Other Models

Model	LOA	Beam	Draft	Speed (Cruising/Max)	Gross Tonnage
GR SESSANTATRE	63' 0" (19.30 m)	21' 0" (6.45 m)			
IN SIX	70' 0" (21.51 m)	16' 0" (4.90 m)			
Incredibile 45	45' 0" (13.72 m)				
N/A	54' 0" (16.59 m)				

SPECIFICATIONS

LOA:

63' 0" (19.30 m)

Hull Material:

Fiberglass and Plastic Yachts

Engines:

1

Beam:

21' 0" (6.45 m)

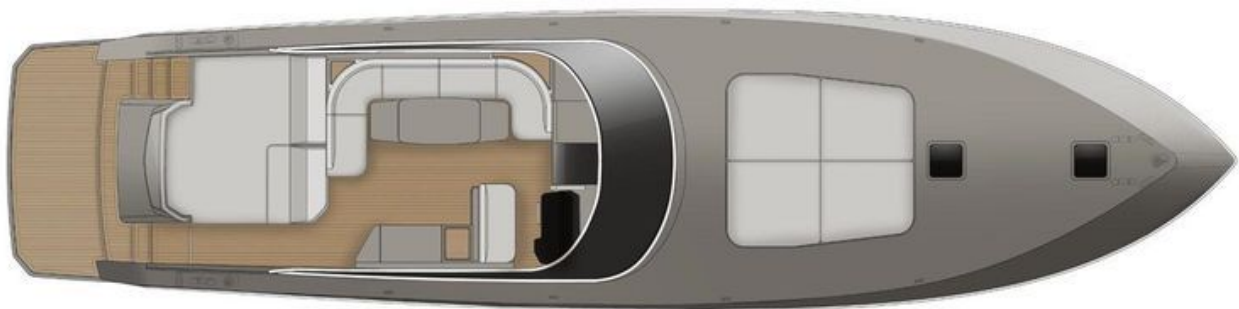
Deck Material:

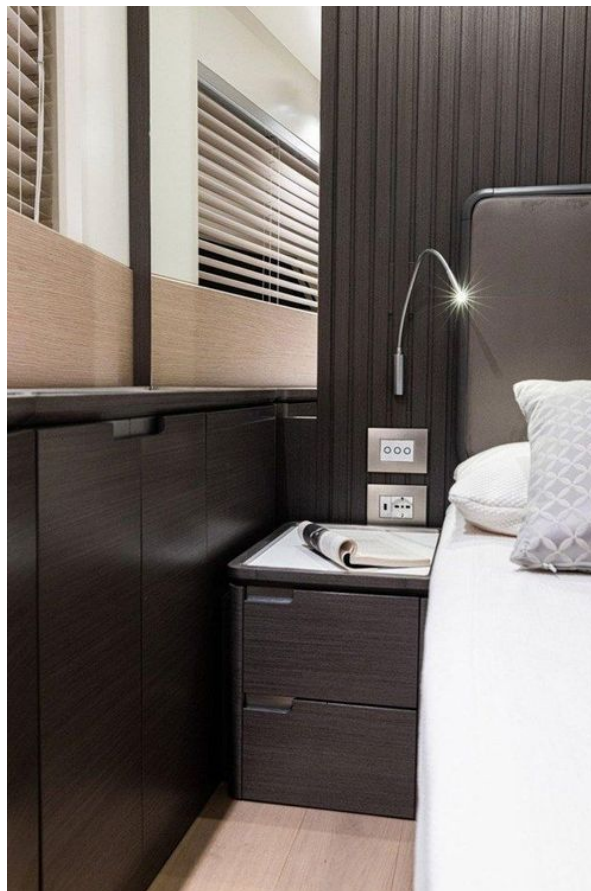
Fiberglass

Manufacturer:

MAN

GALLERY











CONTACTS

Shestakov Yacht Sales is a brokerage company specializing in the sale and service of yachts worldwide. The company offers services for buying and selling both new and used motor yachts, sailing vessels, and luxury superyachts. They also provide yacht registration, insurance, technical maintenance, crew selection, and charter organization services across the U.S., Canada, Latin America, the Caribbean, and the Bahamas.

The founder and lead broker of the company is Andrey Shestakov, a licensed and certified expert with extensive experience in marine engineering and shipbuilding.

The company has an extensive network of partnerships with major yacht manufacturers worldwide and provides services in multiple languages, including Russian, Ukrainian, Spanish, and English. The office is in Dania Beach, Florida, USA.

For more information and to view available yachts, you can visit the company's official website: <https://shestakovyachtsales.com>

Contact details

Phone: +1(954)274-4435

Email: andrey@shestakovyachtsales.com

Address



1380 Weeping Willow Way, Hollywood,
Florida 33019