



SHESTAKOV

Yacht Sales

88 – SANLORENZO



Builder:

Sanlorenzo

Model:

88

LOA:

88' 0" (27 m)

Beam:

22' 0" (6.80 m)

Max Speed:

28 kn / 32.22 mph

Hull Material:

Fiberglass and Plastic Yachts

Deck Material:

GRP

Engines:

1

Manufacturer:

CAT

If you would like to buy a yacht **88 – Sanlorenzo** or would like help, please call +1(954)274-4435 or visit shestakovyachtsales.com

TABLE OF CONTENTS

OVERVIEW	3
Selecting a 88	3
Features of the Model	3
Technical Specifications	4
Pricing and Ordering	4
Questions and Answers	4
Owner Experience Review	5
Pros and Cons	6
Comparison with Other Models	6
SPECIFICATIONS	8
GALLERY	9
CONTACTS	14

OVERVIEW

Experience the 88 from Sanlorenzo — an 88 ft motor yacht in the motor yachts category, built on a fiberglass hull with GRP decking and capable of reaching up to 28 knots (32.22 mph). This model is offered by Shestakov Yacht Sales with broker Andrey Shestakov.

Selecting a 88

Opting for the 88 by Sanlorenzo centers on achieving a harmonious balance of size, propulsion efficiency, and assured seakeeping. Measuring 88 ft (27 m) overall with a 22 ft (6.8 m) beam, it provides substantial interior volume for a motor yacht while remaining sufficiently nimble to approach 28 knots.

Powered by a single CAT engine, the platform favors uncomplicated reliability, and the fiberglass hull alongside GRP decks promotes longevity and simplified upkeep. Contact Andrey Shestakov at Shestakov Yacht Sales to determine if this model matches your cruising ambitions and marina needs.

Features of the Model

- LOA of 88 ft (27 m) for substantial onboard space
- 22 ft (6.8 m) beam for comfortable stability
- Max speed up to 28 knots (32.22 mph)
- Propulsion by a single CAT engine for simplified operation
- fiberglass hull paired with GRP decks
- Positioned within the broader family of motor yachts as a premium motor yacht

Technical Specifications

- Model: 88
- Builder: Sanlorenzo
- Category: motor yachts
- Type: motor yacht
- LOA: 88 ft (27 m)
- Beam: 22 ft (6.8 m)
- Max speed: 28 kn (32.22 mph)
- Engines: 1 x CAT
- Hull: fiberglass construction
- Deck: GRP

Pricing and Ordering

Current pricing, availability, and options for ordering or purchasing the 88 are provided upon request. Reach out to Andrey Shestakov at Shestakov Yacht Sales to review specifications, schedule an inspection, and clarify next steps. Our brokerage team will organize viewings and assist with paperwork, delivery scheduling, and any build coordination.

Questions and Answers

Q: What type of yacht is the 88 by Sanlorenzo? A: It is a premium motor yacht listed among motor yachts, constructed on a fiberglass hull with a GRP deck to ensure durability and operational efficiency.

Q: What are the key dimensions of the model? A: The **LOA** is 88 ft (27 m) and the **beam** is 22 ft (6.8 m), offering a stable platform with generous interior and exterior living areas.

Q: How fast can it go? A: The **max speed** is up to 28 knots, equivalent to **32.22 mph** , delivering confident capability for a motor yacht.

Q: What powers the yacht? A: Propulsion is provided by a **single CAT engine** , chosen for straightforward maintenance and dependable performance.

Q: How do I purchase or place an order? A: For **pricing** , **availability** , and to arrange an **inspection** , contact Andrey Shestakov at Shestakov Yacht Sales. We handle guidance from offer to final delivery.

Owner Experience Review

Owners and skippers using the Sanlorenzo 88 for private family cruises, island exploration, and charter operations commend its liveability and natural social circulation. Typical four-cabin layouts, often including a full-beam master with a king-size berth, make the yacht suitable for families or mixed guest parties. A roomy salon that flows out to the aft deck and a forward “country kitchen” galley facilitate both formal service and relaxed entertaining, while a generous flybridge provides seating, sunbeds, and a bar/grill area ideal for weekends afloat.

Underway, earlier semi-displacement hulls are reported to cruise comfortably in the low-to-mid-20-knot band with composed, responsive handling appropriate for coastal passages and island hops. The later crossover version introduced around 2017–2018 was engineered to limit pitching and deflect spray; sea trials note a quiet, stable ride that achieved roughly 23 knots in approximately 2-foot chop due to considered engine placement and insulation. From a maintenance perspective, many examples feature walk-around engine-room access that eases routine servicing on the twin mains. Conversely, forum posts and technician reports highlight extended lead times for some parts from Italian yards—commonly three to four months—and caution that semi-custom change orders can introduce access or fit issues

requiring correction during or after build. Periodic refits of interiors, exteriors, and generators are also frequently documented as part of standard lifecycle and ownership expenses.

Pros and Cons

- Family- and charter-friendly layout with a full-beam master and flexible four-cabin arrangements.
- Spacious salon, aft deck, and a large flybridge with social amenities suit weekend entertaining.
- Composed ride at typical 20–25-knot cruises, with later crossover variants praised for quiet, controlled motion.
- Some replacement parts from Italian yards can have long lead times, often several months.
- Semi-custom change orders have been known to create access or fit challenges that need rectification.
- Many examples undergo periodic refits, adding to normal lifecycle ownership costs.

Comparison with Other Models

Model	LOA	Beam	Draft	Speed (Cruising/Max)	Gross Tonnage
88	88' 0" (27 m)	22' 0" (6.80 m)		28 kn	
SD118	117' 0" (35.75 m)	25' 0" (7.60 m)	6' 11" (2.10 m)	15 kn / 18 kn	299
52 STEEL	170' 0" (52 m)	30' 0" (9.30 m)	8' 8" (2.65 m)	13.5 kn / 17 kn	499
SL86	87' 0" (26.75 m)	20' 0" (6.35 m)	20' 6" (6.25 m)	26 kn / 31 kn	
SL120A	121' 0" (36.93 m)	24' 0" (7.45 m)	8' 2" (2.50 m)	23 kn / 27 kn	279
SL 94	94' 0" (28.65 m)	22' 0" (6.71 m)		23 kn / 28 kn	
SX 76'	78' 0" (23.75 m)	21' 0" (6.60 m)	9' 10" (3 m)	18 kn / 22 kn	80
SD96	96' 0" (29.26 m)	25' 0" (7.62 m)	21' 4" (6.50 m)	14 kn / 19 kn	

SL96A	95' 0" (29.06 m)	22' 0" (6.76 m)	6' 6" (1.98 m)	24 kn / 28 kn	100
SL72	74' 0" (22.78 m)	15' 0" (4.70 m)	21' 1" (6.42 m)	17 kn / 25 kn	

SPECIFICATIONS

LOA:

88' 0" (27 m)

Max Speed:

28 kn / 32.22 mph

Hull Material:

Fiberglass and Plastic Yachts

Engines:

1

Beam:

22' 0" (6.80 m)

Deck Material:

GRP

Manufacturer:

CAT

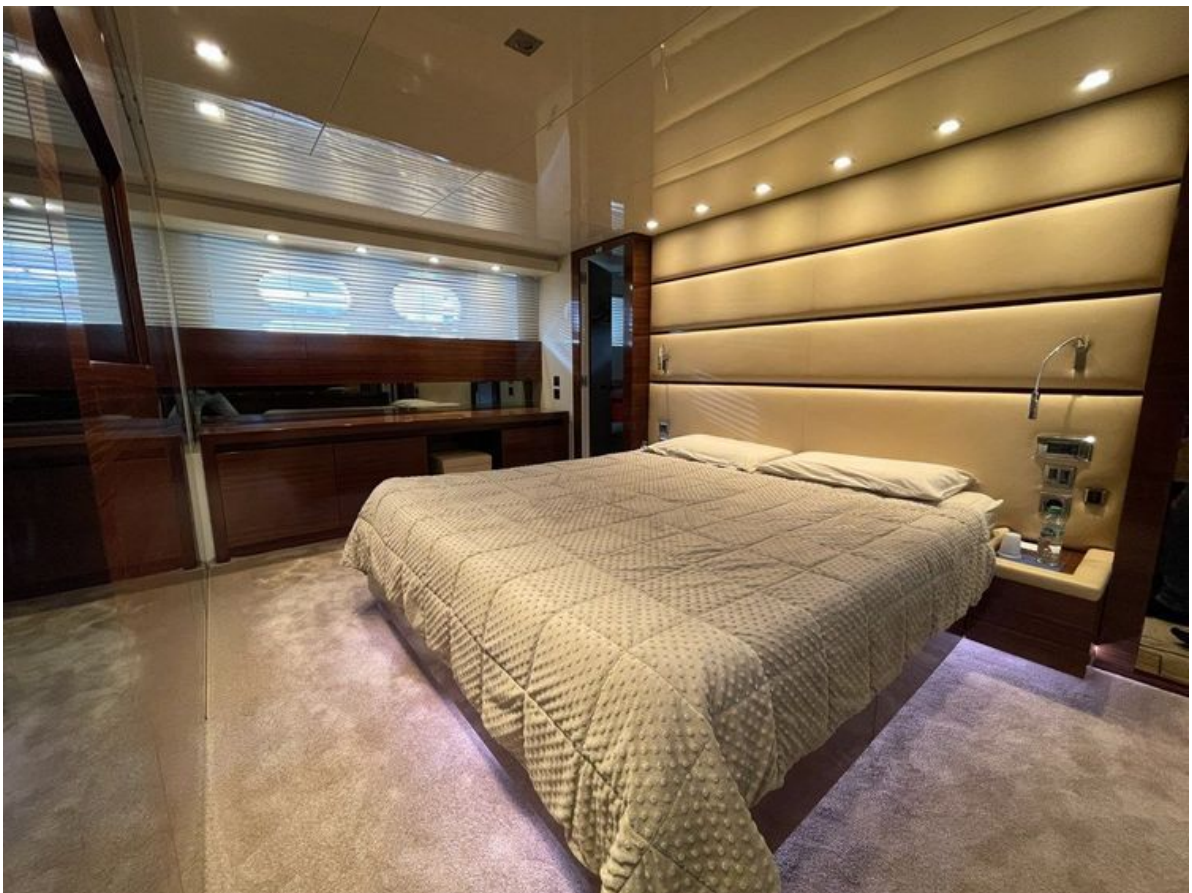
GALLERY











CONTACTS

Shestakov Yacht Sales is a brokerage company specializing in the sale and service of yachts worldwide. The company offers services for buying and selling both new and used motor yachts, sailing vessels, and luxury superyachts. They also provide yacht registration, insurance, technical maintenance, crew selection, and charter organization services across the U.S., Canada, Latin America, the Caribbean, and the Bahamas.

The founder and lead broker of the company is Andrey Shestakov, a licensed and certified expert with extensive experience in marine engineering and shipbuilding.

The company has an extensive network of partnerships with major yacht manufacturers worldwide and provides services in multiple languages, including Russian, Ukrainian, Spanish, and English. The office is in Dania Beach, Florida, USA.

For more information and to view available yachts, you can visit the company's official website: <https://shestakovyachtsales.com>

Contact details

Phone: +1(954)274-4435

Email: andrey@shestakovyachtsales.com

Address



1380 Weeping Willow Way, Hollywood,
Florida 33019