



SHESTAKOV

Yacht Sales

COASTAL FLYER 41, PICNIC CRUISER – SANTA CRUZ



Builder:

SANTA CRUZ

Model:

Coastal Flyer 41, Picnic Cruiser

LOA:

41' 0" (12.50 m)

Min Draft:

4' 11" (1.50 m)

Beam:

12' 0" (3.89 m)

Cruise Speed:

16 kn / 18.41 mph

Max Speed:

20 kn / 23.02 mph

Gross Tonnage:

7.17 Pounds

Water Capacity:

100 Gallons

Fuel Capacity:

245 Gallons

Total Heads:

1

Hull Material:

Fiberglass and Plastic Yachts

If you would like to buy a yacht **COASTAL FLYER 41, PICNIC CRUISER – SANTA CRUZ** or would like help, please call +1(954)274-4435 or visit shestakovyachtsales.com

TABLE OF CONTENTS

OVERVIEW	3
Selecting a Coastal Flyer 41, Picnic Cruiser	3
Features of the Model	3
Technical Specifications	4
Pricing and Ordering	4
Questions and Answers	4
Owner Experience Review	5
Pros and Cons	6
Comparison with Other Models	7
SPECIFICATIONS	8
GALLERY	9
CONTACTS	14

OVERVIEW

The Coastal Flyer 41, Picnic Cruiser from SANTA CRUZ marries the refined presence of a motor yacht with the laid-back charm of a cruiser. Constructed primarily of durable fiberglass and plastic with a fiberglass deck, this design is marketed by Andrey Shestakov and the team at Shestakov Yacht Sales for owners seeking relaxed coastal outings and elegant weekend escapes.

Selecting a Coastal Flyer 41, Picnic Cruiser

Measuring 41 ft (12.5 m) overall with a 12 ft (3.89 m) beam, the Coastal Flyer 41, Picnic Cruiser presents a stable, well-proportioned platform ideal for daytime cruising. David Gerr's Modified V-Hull, driven by a single inboard Yanmar diesel, provides predictable handling and a comfortable cruise speed of 16 knots with a top speed near 20 knots (16 kn = 18.41 mph; 20 kn = 23.02 mph). If you prefer the simplicity of a single reliable diesel, a modest 4.921 ft (1.5 m) draft, and the convenience of a dedicated head, contact Andrey Shestakov at Shestakov Yacht Sales to discuss availability and to arrange viewings.

Features of the Model

- Categorized as a motor yacht configured in a practical cruiser format
- Solid fiberglass and plastic construction with a molded fiberglass deck
- David Gerr-designed Modified V-Hull for secure and confident running
- Single Yanmar inboard diesel engine for uncomplicated propulsion and servicing
- Typical cruise of 16 knots with a published maximum of 20 knots (18.41 / 23.02 mph)
- Functional interior plan with 1 head and tankages of 245 gal fuel and 100 gal

water

Technical Specifications

- Length overall (LOA): 41 ft (12.5 m)
- Beam: 12 ft (3.89 m)
- Draft (min): 4.921 ft (1.5 m)
- Hull configuration: Modified V-Hull
- Hull designer: David Gerr
- Construction: fiberglass and plastic build; Deck: Fiberglass
- Engines: 1 x Yanmar; Type: Inboard; Fuel: Diesel
- Cruising speed: 16 kn (18.41 mph)
- Maximum speed: 20 kn (23.02 mph)
- Gross tonnage: 7.17 GT
- Heads: 1
- Fuel capacity: 245 gal
- Fresh water capacity: 100 gal
- Class: motor yacht / cruiser

Pricing and Ordering

To obtain current pricing, confirm availability, or schedule a detailed consultation about the Coastal Flyer 41, Picnic Cruiser, please reach out to Andrey Shestakov at Shestakov Yacht Sales. Our brokerage team will assist with inspections, paperwork, and manage the purchase process to align with your timeline.

Questions and Answers

Q: What are the cruising and top speeds of the Coastal Flyer 41, Picnic Cruiser?

A: The model typically cruises at **16 knots (18.41 mph)** and attains a maximum speed of **20 knots (23.02 mph)** .

Q: What engine powers this motor yacht? A: Propulsion comes from a **single Yanmar inboard diesel** engine, chosen for straightforward reliability and serviceability.

Q: What are the key dimensions and draft? A: Overall length is **41 ft (12.5 m)** , beam measures **12 ft (3.89 m)** , and minimum draft is **4.921 ft (1.5 m)** .

Q: Who designed the hull, and what is the hull type? A: The hull is a **Modified V-Hull** penned by **David Gerr** , built in fiberglass and plastic construction.

Q: What onboard utilities are provided? A: The yacht includes **1 head** , a **245 gal** fuel tank, and **100 gal** of fresh water. For viewings or purchase arrangements, contact **Andrey Shestakov** at **Shestakov Yacht Sales** .

Owner Experience Review

Owners describe the Coastal Flyer 41, Picnic Cruiser from SANTA CRUZ as an authentic day and picnic boat that also doubles as a comfortable commuter for scenic coastal passages, with enough accommodation for a couple to stay overnight. The arrangement—single cabin, single head, and a compact galley—serves short cruises well, and production was very limited (reports indicate only four 41-foot hulls exist), so these boats are more often owner-used and owner-maintained than run in commercial charter fleets.

Underway, the Dave Gerr Gerr-Vee hull provides a forgiving ride in choppy conditions and steady directional control. On versions fitted with the UltraJet jet drive and joystick steering, owners note exceptional slow-speed handling and easy access to shallow anchorages; experienced gunkholers report a minimum operating draft near 1.5 feet. Jet systems tend to feel higher-revving with a gentler initial surge compared with propellers, and early sea trials

highlight that impeller choice and tuning can influence RPM response and top speed; most owners find a comfortable cruise around 16 knots, while published maximums vary from 20 to 25 knots depending on installation and setup.

The interior finish emphasizes traditional craftsmanship—Honduran mahogany joinery, a nicely arranged helm, and classic commuter aesthetics. Individual boats often differ in outfitting—some have added air conditioning, upgraded electronics, or even granite countertops—but overall interior volume is modest for a 41-foot yacht. Routine mechanical care follows standard Yanmar 6LY maintenance patterns, while the jet-drive hardware requires specialist attention; documented work on at least one boat includes hydraulic overhauls, Ultrajet component replacement, and joystick/control-system servicing carried out by specialist vendors.

Pros and Cons

- Shallow-water capability (around 1.5 ft) makes the boat well suited to gunkholing and exploring sheltered bays.
- The Gerr-Vee hull produces a comfortable ride and reliable directional stability in a variety of conditions.
- Ultrajet jet drive with joystick control offers excellent low-speed handling and tight docking performance.
- Jet propulsion can feel more rev-happy with less initial surge compared with traditional prop-driven boats.
- Jet-drive components and hydraulics may require specialist service and parts, as documented on at least one boat.
- Interior volume is modest for a 41-footer, featuring one cabin, one head, and a small galley.

Comparison with Other Models

Model	LOA	Beam	Draft	Speed (Cruising/ Max)	Gross Tonnage
Coastal Flyer 41, Picnic Cruiser	41' 0" (12.50 m)	12' 0" (3.89 m)	4' 11" (1.50 m)	16 kn / 20 kn	7.17
70	70' 0" (21.34 m)	15' 0" (4.60 m)	30' 1" (9.17 m)		

SPECIFICATIONS

LOA:

41' 0" (12.50 m)

Beam:

12' 0" (3.89 m)

Cruise Speed:

16 kn / 18.41 mph

Gross Tonnage:

7.17 Pounds

Fuel Capacity:

245 Gallons

Total Heads:

1

Hull Material:

Fiberglass and Plastic Yachts

Hull Configuration:

Modified V-Hull

Engines:

1

Engine Type:

Inboard

Min Draft:

4' 11" (1.50 m)

Max Speed:

20 kn / 23.02 mph

Water Capacity:

100 Gallons

Deck Material:

Fiberglass

Hull Designer:

David Gerr

Manufacturer:

Yanmar

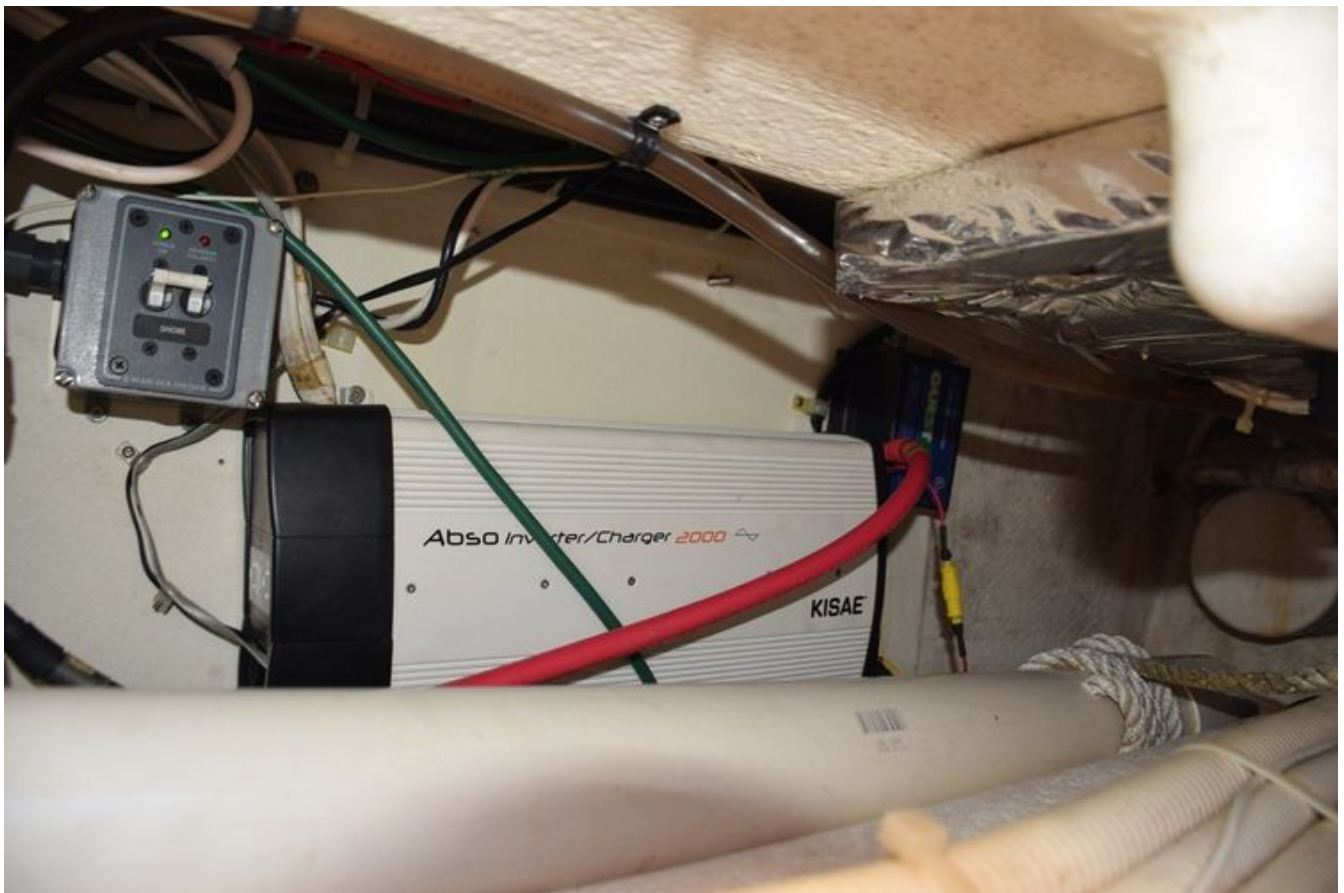
Fuel Type:

Diesel

GALLERY











CONTACTS

Shestakov Yacht Sales is a brokerage company specializing in the sale and service of yachts worldwide. The company offers services for buying and selling both new and used motor yachts, sailing vessels, and luxury superyachts. They also provide yacht registration, insurance, technical maintenance, crew selection, and charter organization services across the U.S., Canada, Latin America, the Caribbean, and the Bahamas.

The founder and lead broker of the company is Andrey Shestakov, a licensed and certified expert with extensive experience in marine engineering and shipbuilding.

The company has an extensive network of partnerships with major yacht manufacturers worldwide and provides services in multiple languages, including Russian, Ukrainian, Spanish, and English. The office is in Dania Beach, Florida, USA.

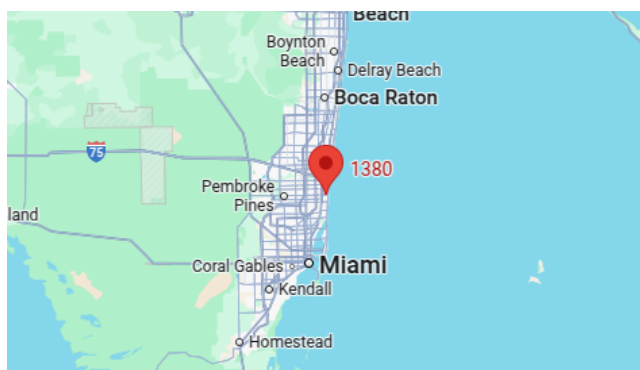
For more information and to view available yachts, you can visit the company's official website: <https://shestakovyachtsales.com>

Contact details

Phone: +1(954)274-4435

Email: andrey@shestakovyachtsales.com

Address



1380 Weeping Willow Way, Hollywood,
Florida 33019