



SHESTAKOV

Yacht Sales

310 SLX - SEA RAY



Builder:

SEA RAY

Model:

310 SLX

LOA:

33' 0" (10.08 m)

Min Draft:

1' 1" (0.33 m)

Beam:

10' 0" (3.12 m)

Max Draft:

10' 5" (3.17 m)

Cruise Speed:

35 kn / 35 mph

Max Speed:

60 kn / 60 mph

Water Capacity:

24 Gallons

Fuel Capacity:

158 Gallons

Total Heads:

1

Hull Material:

Fiberglass and Plastic Yachts

If you would like to buy a yacht **310 SLX - SEA RAY** or would like help, please call +1(954)274-4435 or visit shestakovyachtsales.com

TABLE OF CONTENTS

OVERVIEW	3
Selecting a 310 SLX	3
Features of the Model	3
Technical Specifications	4
Pricing and Ordering	4
Questions and Answers	4
Owner Experience Review	5
Pros and Cons	6
Comparison with Other Models	7
SPECIFICATIONS	8
GALLERY	9
CONTACTS	14

OVERVIEW

The 310 SLX from SEA RAY is a multifunctional motor yacht in the cruiser class built with a fiberglass and plastic hull. Driven by twin Mercury outboards running on gasoline, it cruises confidently at 35 kn (35 mph) and can reach up to 60 kn (60 mph). Measuring 33 ft (10.08 m) LOA with a 10 ft (3.12 m) beam, it features a practical draft range, a single head, and balanced fuel and freshwater tanks—presented to the market by Shestakov Yacht Sales.

Selecting a 310 SLX

If your priority is a compact, performance-oriented boat with twin outboard power and uncomplicated onboard systems, the 310 SLX is a strong candidate. As a motor yacht that fits within the cruiser segment, it suits buyers who value speed, uncomplicated operation, and day-boat flexibility. Contact Andrey Shestakov and the Shestakov Yacht Sales team to verify suitability, check current availability, and discuss ordering details based on your intended use and cruising grounds.

Features of the Model

- Classification: motor yacht / cruiser
- Construction: fiberglass and plastic hull; fiberglass deck
- Propulsion: 2 Mercury outboards; gas fuel
- Performance: 35 kn (35 mph) cruise; 60 kn (60 mph) maximum
- Dimensions: 33 ft (10.08 m) LOA; 10 ft (3.12 m) beam
- Draft range: approx. 1.094–10.389 ft (0.3333–3.1666 m)
- Onboard: 1 head; 24 gal fresh water; 158 gal fuel capacity

Technical Specifications

- Builder: SEA RAY
- Model: 310 SLX
- Classification: motor yacht; cruiser
- Hull: fiberglass and plastic
- Deck material: Fiberglass
- LOA: 33 ft (10.08 m)
- Beam: 10 ft (3.12 m)
- Draft (min/max): 1.094 ft / 10.389 ft (0.3333 m / 3.1666 m)
- Engines: 2 x Mercury
- Engine type: Outboard
- Fuel type: Gas
- Cruise speed: 35 kn (35 mph)
- Max speed: 60 kn (60 mph)
- Heads: 1
- Fresh water capacity: 24 gal
- Fuel capacity: 158 gal

Pricing and Ordering

For up-to-date pricing, lead times, and delivery scheduling for the 310 SLX by SEA RAY, please reach out to Andrey Shestakov at Shestakov Yacht Sales. Our brokerage will prepare a customized quote and assist with specification confirmation, paperwork, and the purchase process.

Questions and Answers

Q: What type of yacht is the 310 SLX? A: The 310 SLX from SEA RAY is a motor yacht that occupies the cruiser segment and is constructed on a fiberglass and

plastic platform.

Q: What propulsion and fuel does it use? A: It is powered by twin **Mercury outboard** engines running on **gas** , achieving a cruising speed of **35 kn (35 mph)** and a maximum of **60 kn (60 mph)** .

Q: What are the key dimensions and draft? A: LOA is **33 ft (10.08 m)** , beam is **10 ft (3.12 m)** , and the draft falls approximately within **1.094–10.389 ft (0.3333–3.1666 m)** .

Q: What onboard capacities does it have? A: The boat includes **1 head** , **24 gal** of fresh water capacity, and **158 gal** of fuel capacity.

Q: How do I purchase through Shestakov Yacht Sales? A: Contact **Andrey Shestakov** at Shestakov Yacht Sales to check availability, obtain pricing, and begin the ordering process for the 310 SLX from SEA RAY.

Owner Experience Review

Owners and reviewers commonly describe the 310 SLX from SEA RAY as a roomy day boat and a family-friendly cruiser, often noted for seating capacities reported up to 17. The standard watersports tower, a social cockpit with a convertible aft lounge, and a wet bar make it ideal for watersports outings and beach runs. A private VacuFlush head and a galley-style wet bar, with optional fridge and grill packages, are cited as convenience features that support all-day trips and occasional short overnight stays; owners stepping up from smaller SLX models appreciate the increased cockpit area, and one owner commented that adding a windlass was essential.

On the water, professional test reports praise a composed, comparatively soft ride for a bowrider of this size, attributing the feel to the 21° transom deadrise combined with Quiet Ride/Tuned Transom design elements. Time-to-plane in test conditions was reported at roughly 5.3 seconds, and handling is described

as assured in choppy lake conditions; online forums frequently rank the SLX line, including the 310, among bowriders that manage larger lake chop more effectively.

When buying used, careful inspection is important. Owners and brokers frequently point to sterndrive maintenance as a notable expense, with recurring mentions of Bravo outdrive corrosion, absent or poorly maintained anodes, and the need to budget for replacement anodes, bellows, and periodic Bravo-3 servicing. The VacuFlush head and freshwater components may need troubleshooting over time. Many listings highlight single-owner, lift-kept, or freshwater-use history, and a professional survey with a sea trial is strongly recommended.

Pros and Cons

- Big day-boat utility with seating for a crowd, watersports tower, and a social cockpit suited to beach days and family use.
- Private VacuFlush head, wet bar, and available fridge/grill enhance comfort for full-day cruising and short overnights.
- Composed ride for its class thanks to 21° deadrise and Quiet Ride/Tuned Transom; testers report confident behavior in chop.
- Sterndrive/Bravo outdrive corrosion and neglected anodes are common used-boat pain points that demand inspection.
- VacuFlush head and freshwater systems can require troubleshooting and occasional parts/service.
- Routine sterndrive upkeep (anodes, bellows, Bravo-3 service) adds ongoing cost; a survey and sea trial are strongly advised.

Comparison with Other Models

Model	LOA	Beam	Draft	Speed (Cruising/ Max)	Gross Tonnage
310 SLX	33' 0" (10.08 m)	10' 0" (3.12 m)	1' 1" (0.33 m) – 10' 5" (3.17 m)	35 kn / 60 kn	
Sundancer 320 OB	34' 0" (10.36 m)	10' 0" (3.18 m)	11' 6" (3.50 m)		
240 Sundeck	26' 0" (8.03 m)	8' 0" (2.59 m)	11' 3" (3.42 m)		
270 SLX	28' 0" (8.53 m)	8' 0" (2.69 m)	6' 10" (2.08 m)		
500 Sundancer	53' 0" (16.26 m)	15' 0" (4.65 m)	13' 5" (4.08 m) – 14' 3" (4.33 m)		
SPX 210 OB	21' 0" (6.40 m)	8' 0" (2.56 m)			
390 Motor Yacht	41' 0" (12.72 m)	14' 0" (4.34 m)	9' 10" (3 m)		
44 Sedan Bridge	44' 0" (13.44 m)	14' 0" (4.34 m)	12' 0" (3.67 m)		
350 Sundancer	35' 0" (10.82 m)	11' 0" (3.50 m)			
450 Express Bridge	51' 0" (15.65 m)	14' 0" (4.47 m)	11' 3" (3.42 m)		

SPECIFICATIONS

LOA:

33' 0" (10.08 m)

Beam:

10' 0" (3.12 m)

Cruise Speed:

35 kn / 35 mph

Water Capacity:

24 Gallons

Total Heads:

1

Hull Material:

Fiberglass and Plastic Yachts

Engines:

2

Engine Type:

Outboard

Min Draft:

1' 1" (0.33 m)

Max Draft:

10' 5" (3.17 m)

Max Speed:

60 kn / 60 mph

Fuel Capacity:

158 Gallons

Deck Material:

Fiberglass

Manufacturer:

Mercury

Fuel Type:

Gas

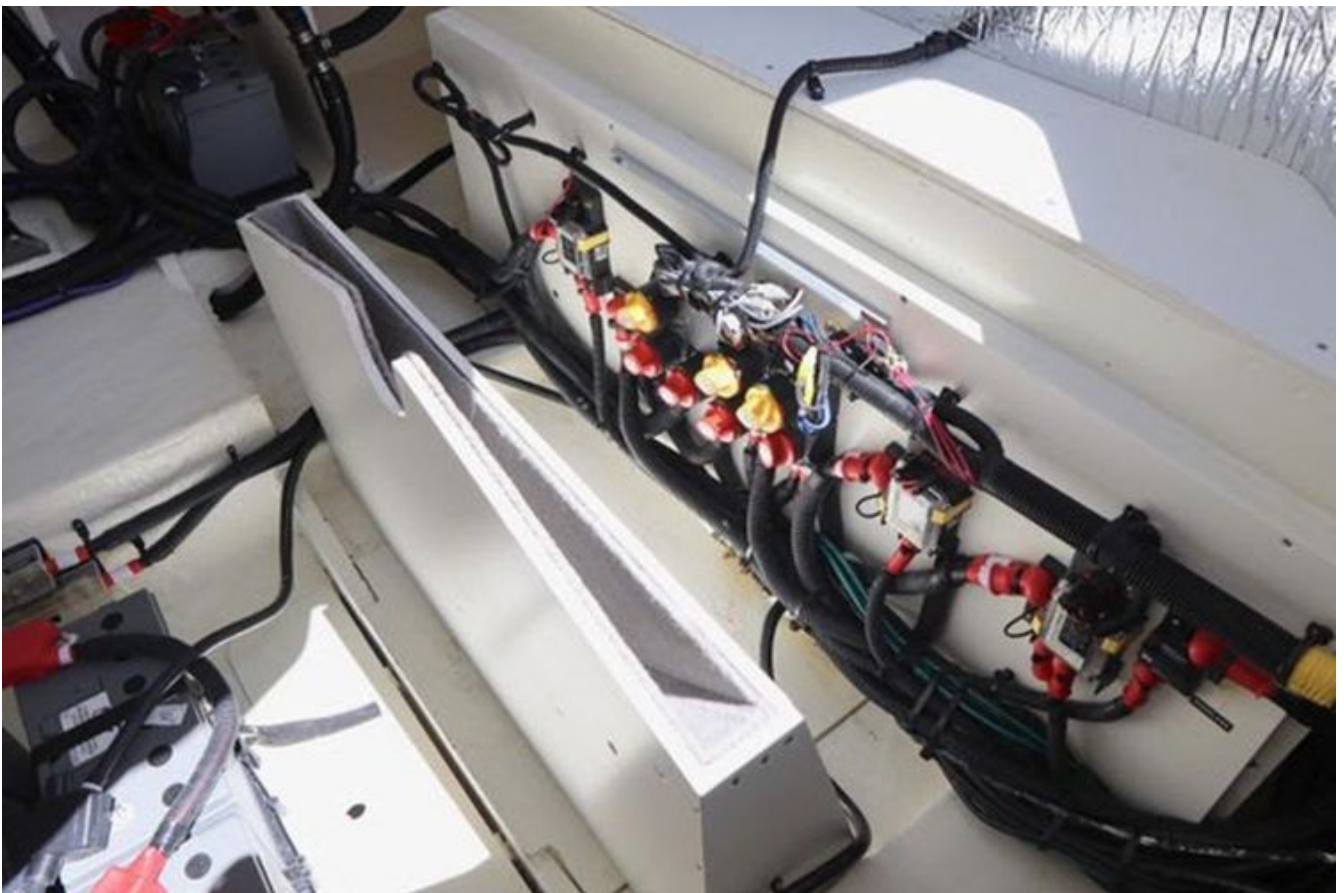
GALLERY











CONTACTS

Shestakov Yacht Sales is a brokerage company specializing in the sale and service of yachts worldwide. The company offers services for buying and selling both new and used motor yachts, sailing vessels, and luxury superyachts. They also provide yacht registration, insurance, technical maintenance, crew selection, and charter organization services across the U.S., Canada, Latin America, the Caribbean, and the Bahamas.

The founder and lead broker of the company is Andrey Shestakov, a licensed and certified expert with extensive experience in marine engineering and shipbuilding.

The company has an extensive network of partnerships with major yacht manufacturers worldwide and provides services in multiple languages, including Russian, Ukrainian, Spanish, and English. The office is in Dania Beach, Florida, USA.

For more information and to view available yachts, you can visit the company's official website: <https://shestakovyachtsales.com>

Contact details

Phone: +1(954)274-4435

Email: andrey@shestakovyachtsales.com

Address



1380 Weeping Willow Way, Hollywood,
Florida 33019