



SHESTAKOV

Yacht Sales

## 320 SUNDANCER OB – SEA RAY



**Builder:**

SEA RAY

**Model:**

320 Sundancer OB

**LOA:**

32' 0" (9.75 m)

**Beam:**

10' 0" (3.05 m)

**Hull Material:**

Fiberglass and Plastic Yachts

**Deck Material:**

Fiberglass

**Hull Configuration:**

Deep Vee

**Engines:**

3

**Manufacturer:**

Mercury

**Engine Type:**

Outboard

**Fuel Type:**

Gas/Petrol

If you would like to buy a yacht **320 SUNDANCER OB – SEA RAY** or would like help, please call +1(954)274-4435 or visit [shestakovyachtsales.com](http://shestakovyachtsales.com)

---

# TABLE OF CONTENTS

---

**OVERVIEW ..... 3**

- Selecting a 320 Sundancer OB ..... 3
- Features of the Model ..... 3
- Technical Specifications ..... 4
- Pricing and Ordering ..... 4
- Questions and Answers ..... 4
- Owner Experience Review ..... 5
- Pros and Cons ..... 6
- Comparison with Other Models ..... 6

**SPECIFICATIONS ..... 8**

**GALLERY ..... 9**

**CONTACTS ..... 14**

## OVERVIEW

---

Discover the 320 Sundancer OB from SEA RAY — a motor yacht built on a fiberglass-and-plastic hull with a Deep Vee profile and driven by triple Mercury outboards using Gas/Petrol. Coordinate your purchase or custom specification with Andrey Shestakov and the Shestakov Yacht Sales team to match this model to your cruising objectives.

### Selecting a 320 Sundancer OB

---

Deciding on the 320 Sundancer OB comes down to its adaptable footprint and assured seakeeping. Measuring 32 ft (9.75 m) LOA with a 10 ft (3.05 m) beam, it occupies a practical berth size while the triple Mercury outboards give lively acceleration and confident handling. As a motor yacht constructed with a fiberglass-and-plastic hull and a Deep Vee hull form, it offers a balance of onboard comfort and capable performance offshore. For up-to-date listings and personalized advice, reach out to Andrey Shestakov at Shestakov Yacht Sales.

### Features of the Model

---

- Built by SEA RAY
- Powered by three Mercury outboard engines (Gas/Petrol)
- Deep Vee hull configuration for improved handling
- Classified as a motor yacht
- Hull material: fiberglass-and-plastic
- Decking material: Fiberglass
- 32 ft LOA and 10 ft beam—sized for flexible marina and storage options

## Technical Specifications

---

- LOA: 32 ft (9.75 m)
- Beam: 10 ft (3.05 m)
- Engines: 3 x Mercury
- Engine type: Outboard
- Fuel: Gas/Petrol
- Hull configuration: Deep Vee
- Hull material category: fiberglass and plastic
- Deck material: Fiberglass
- Category: motor yacht

## Pricing and Ordering

---

Current pricing, lead times, and delivery schedules for the 320 Sundancer OB are provided on request. Contact Andrey Shestakov at Shestakov Yacht Sales to review availability, discuss configuration options, and reserve your production or brokerage slot.

## Questions and Answers

---

Q: What type of yacht is the 320 Sundancer OB? A: It's a motor yacht produced by SEA RAY built on a fiberglass-and-plastic hull with a Deep Vee hull design.

Q: What are the key dimensions? A: The **LOA** measures 32 ft (9.75 m) and the **beam** is 10 ft (3.05 m).

Q: What engines power this model? A: It is equipped with **three Mercury engines** configured as **outboards** and fueled by **Gas/Petrol** .

Q: What is the hull and deck construction? A: The **hull** features a **Deep Vee** form within the fiberglass and plastic category; the **deck** is constructed of

## fiberglass .

Q: Who can help me order and price the yacht? A: **Andrey Shestakov** and the team at **Shestakov Yacht Sales** will assist with **ordering** , availability checks, and current pricing for the 320 Sundancer OB.

## Owner Experience Review

---

Owners commonly deploy the 320 Sundancer OB from SEA RAY exactly as intended: weekend family cruising, quick overnight trips, and spirited day runs. With a single stateroom, a compact galley, and an enclosed head, the interior suits couples or small families; several owners report there's "nice space above and below" for a vessel of this size, while also noting it's snug for long-term liveaboard use. The cockpit layout and finish receive frequent compliments for ergonomics and quality.

Underway, owners describe the handling as responsive and sporty when on plane. Outboard-equipped examples are often used as fast dayboats and regularly achieve cruise speeds in the 30–40+ kt range depending on propulsion choices, which reflects typical owner usage. Compared with earlier I/O-powered 320 variants that some found underpowered, the OB setup is perceived as more lively; however, a few owners mention a generally minimal bow flare across Sundancer hulls, which can affect comfort in heavier seas.

Routine maintenance is straightforward: the outboard configuration reduces the complexity of an inboard engine room but transfers service responsibilities to outboard-specific items such as lower unit inspections, prop maintenance, and gearcase servicing. The substantial upholstery and cockpit carpeting present well but increase cleaning and upkeep demands, and owner opinions on perceived build quality vary from "felt cheaply made" to "normal boat issues, nothing serious." As one owner put it: "It is the perfect boat for how we boat."

## Pros and Cons

- Versatile platform well suited to family weekend cruising and fast dayboating.
- OB variants deliver responsive, sporty handling with potential cruises of 30–40+ kt depending on engine selection.
- Cockpit ergonomics and finish are frequently praised, with effective use of space both above and below deck.
- Accommodation (one stateroom, compact galley, enclosed head) is tight for extended liveaboard arrangements.
- Limited bow flare reported by owners can reduce comfort when encountering larger seas.
- Heavy upholstery and cockpit carpeting require regular cleaning and add to maintenance tasks.

## Comparison with Other Models

Model	LOA	Beam	Draft	Speed (Cruising/ Max)	Gross Tonnage
320 Sundancer OB	32' 0" (9.75 m)	10' 0" (3.05 m)			
Sundancer 320 OB	34' 0" (10.36 m)	10' 0" (3.18 m)	11' 6" (3.50 m)		
240 Sundeck	26' 0" (8.03 m)	8' 0" (2.59 m)	11' 3" (3.42 m)		
270 SLX	28' 0" (8.53 m)	8' 0" (2.69 m)	6' 10" (2.08 m)		
500 Sundancer	53' 0" (16.26 m)	15' 0" (4.65 m)	13' 5" (4.08 m) – 14' 3" (4.33 m)		
SPX 210 OB	21' 0" (6.40 m)	8' 0" (2.56 m)			
390 Motor Yacht	41' 0" (12.72 m)	14' 0" (4.34 m)	9' 10" (3 m)		
44 Sedan Bridge	44' 0" (13.44 m)	14' 0" (4.34 m)	12' 0" (3.67 m)		
350 Sundancer	35' 0" (10.82 m)	11' 0" (3.50 m)			

---

450 Express Bridge	51' 0" (15.65 m)	14' 0" (4.47 m)	11' 3" (3.42 m)		
-----------------------	---------------------	--------------------	-----------------	--	--

---

# SPECIFICATIONS

---

**LOA:**

32' 0" (9.75 m)

**Hull Material:**

Fiberglass and Plastic Yachts

**Hull Configuration:**

Deep Vee

**Engines:**

3

**Engine Type:**

Outboard

**Beam:**

10' 0" (3.05 m)

**Deck Material:**

Fiberglass

**Manufacturer:**

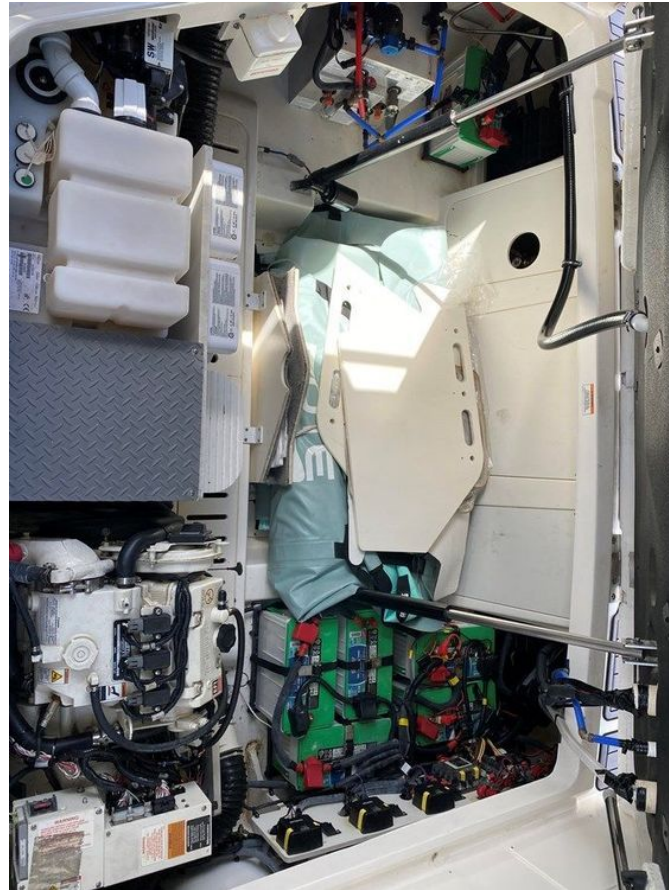
Mercury

**Fuel Type:**

Gas/Petrol

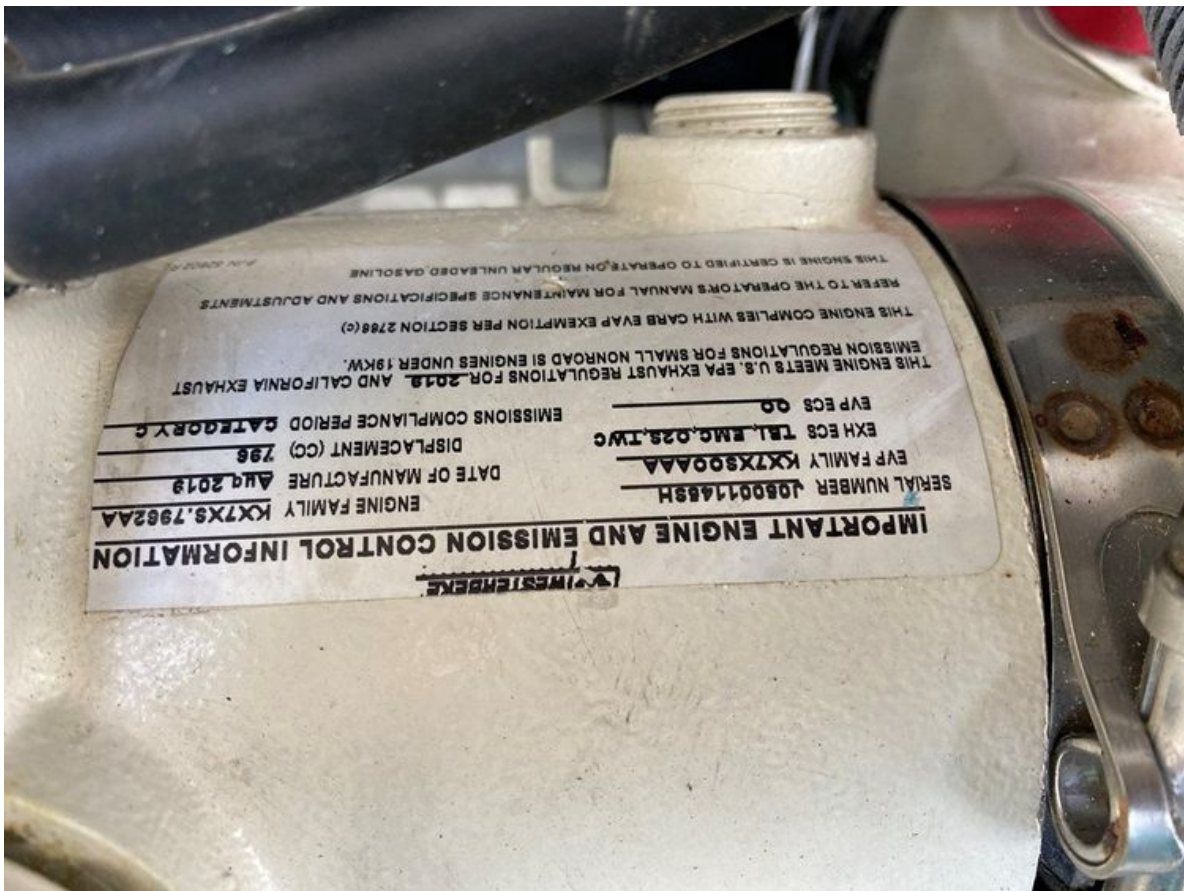
# GALLERY











# CONTACTS

---

Shestakov Yacht Sales is a brokerage company specializing in the sale and service of yachts worldwide. The company offers services for buying and selling both new and used motor yachts, sailing vessels, and luxury superyachts. They also provide yacht registration, insurance, technical maintenance, crew selection, and charter organization services across the U.S., Canada, Latin America, the Caribbean, and the Bahamas.

The founder and lead broker of the company is Andrey Shestakov, a licensed and certified expert with extensive experience in marine engineering and shipbuilding.

The company has an extensive network of partnerships with major yacht manufacturers worldwide and provides services in multiple languages, including Russian, Ukrainian, Spanish, and English. The office is in Dania Beach, Florida, USA.

For more information and to view available yachts, you can visit the company's official website: <https://shestakovyachtsales.com>

## Contact details

---

**Phone:** +1(954)274-4435

**Email:** [andrey@shestakovyachtsales.com](mailto:andrey@shestakovyachtsales.com)

## Address

---



1380 Weeping Willow Way, Hollywood,  
Florida 33019