



SHESTAKOV

Yacht Sales

## 26 RK – SEAWARD



**Builder:**

SEAWARD

**Model:**

26 RK

**LOA:**

26' 0" (7.92 m)

**Min Draft:**

4' 1" (1.25 m)

**Beam:**

8' 0" (2.56 m)

**Max Draft:**

19' 8" (6 m)

**Water Capacity:**

20 Gallons

**Fuel Capacity:**

7 Gallons

**Sleeps:**

2

**Total Heads:**

1

**Hull Material:**

Fiberglass and Plastic Yachts

**Deck Material:**

Fiberglass

If you would like to buy a yacht **26 RK – SEAWARD** or would like help, please call +1(954)274-4435 or visit [shestakovyachtsales.com](http://shestakovyachtsales.com)

---

# TABLE OF CONTENTS

---

**OVERVIEW ..... 3**

- Selecting a 26 RK ..... 3
- Features of the Model ..... 3
- Technical Specifications ..... 4
- Pricing and Ordering ..... 4
- Questions and Answers ..... 4
- Owner Experience Review ..... 5
- Pros and Cons ..... 6
- Comparison with Other Models ..... 6

**SPECIFICATIONS ..... 8**

**GALLERY ..... 9**

**CONTACTS ..... 14**

---

## OVERVIEW

---

The 26 RK from SEAWARD is a small-capacity sail yacht designed for easy coastal cruising and short weekend getaways. Offered through Shestakov Yacht Sales with broker Andrey Shestakov, this model delivers no-nonsense comfort for two in a sturdy, low-upkeep design.

---

## Selecting a 26 RK

---

Opting for the 26 RK is sensible if you prioritize uncomplicated systems, efficient use of interior volume, and a boat that's easy to manage. Measuring 26 ft (7.92 m) LOA with an 8 ft (2.56 m) beam, it slips into compact berths and is straightforward to handle under sail or power. The variable **draft** spanning 4.101 ft (1.25 m) to 19.685 ft (6 m) increases your options for shallow harbors and protected waters. Constructed by SEAWARD with a fiberglass hull and fiberglass deck, upkeep is simplified. Shestakov Yacht Sales and broker Andrey Shestakov stand ready to match this boat to your cruising plans among our cruising sailboats.

---

## Features of the Model

---

- LOA: 26 ft (7.92 m); beam: 8 ft (2.56 m)
- Variable draft: 4.101–19.685 ft (1.25–6 m)
- Propulsion: 1 inboard **Yanmar diesel** engine
- Capacities: **Fuel** 7 gal; **Water** 20 gal
- Accommodations: **Sleeps** 2; **Head** 1
- Construction: fiberglass hull; fiberglass deck

---

## Technical Specifications

---

- Builder: SEAWARD
- Model: 26 RK
- Type: sail yacht
- Class: cruising sailboat
- Hull: fiberglass; Deck: Fiberglass
- LOA: 26 ft (7.92 m)
- Beam: 8 ft (2.56 m)
- Draft (min/max): 4.101 ft (1.25 m) / 19.685 ft (6 m)
- Engines: 1 x **Yanmar** , Inboard, **Diesel**
- Fuel capacity: 7 gal
- Water capacity: 20 gal
- Sleeps: 2; Heads: 1

---

## Pricing and Ordering

---

For up-to-date pricing and current availability of the 26 RK, please reach out to Shestakov Yacht Sales. Broker Andrey Shestakov will assist you through model selection, confirm specifications, arrange inspections and viewings, and manage the purchase paperwork.

---

## Questions and Answers

---

Q: What type of yacht is the 26 RK? A: It is a **compact** sail yacht categorized among **practical** cruising sailboats, constructed by SEAWARD.

Q: What are the key dimensions of the 26 RK? A: The **LOA** measures 26 ft (7.92 m) and the **beam** is 8 ft (2.56 m), dimensions chosen for easy berthing and simple handling.

Q: What is the draft range? A: The **draft** is adjustable from 4.101 ft (1.25 m) up to 19.685 ft (6 m), allowing access to a variety of cruising grounds.

Q: What powers the boat? A: Propulsion comes from a single **Yanmar inboard diesel** engine, with a **fuel** capacity of 7 gal.

Q: What accommodations and capacities are on board? A: The boat **sleeps** 2 and has 1 **head** , carries **20 gal** of freshwater, and is built with a fiberglass hull and fiberglass deck.

## Owner Experience Review

---

Owners commonly deploy the 26 RK from SEAWARD as a trailerable pocket cruiser ideal for shallow-water gunkholing, thanks to its lifting keel and a reported roughly 15-inch minimum draft. It's popular with couples or small families for coastal weekend use, offering berths for four and a compact but functional galley; the rig is manageable for singlehanded sailing. The beam, cited as road-legal at about 8'4", supports genuine tow-and-launch capability for owners equipped to trailer.

Underway, the design favors cruising comfort rather than racing thrills. Practical Sailor highlighted the boat's emphasis on onboard ease, and while the sailplan won't satisfy sailors chasing high performance, owner and test reports describe the 26 RK as responsive through tacks and capable of tracking to roughly 45 degrees true without fuss. With the keel deployed it tracks stiffly and keeps the cockpit relatively dry in chop, though downwind course-keeping requires active attention and speeds typically hover near hull speed (about 6.6 knots). Early examples were reportedly less stiff prior to a bulb redesign.

Accommodation comfort is notable for a boat this size: sleeping berths exceed six feet, headroom is about 70 inches, and seating in cockpit and cabin is arranged for four. The galley is basic (single-burner stove and icebox) with

cover surfaces that increase working space, and many owners like that the molded-pan interior allows everything to be removed and the cabin hosed out—though that construction can be damper and noisier than wood-lined interiors. Maintenance history is important: early production boats experienced keel-bulb attachment problems, and many were retrofitted with a bolt-on bulb that improved stiffness; some first-generation rudders would not fully retract until a cassette redesign was implemented. Lifting-keel mechanisms merit careful inspection because of occasional jamming and restricted service access, even as the optional inboard Yanmar is generally accessible; owners note that keel or rudder upgrades and repairs can be costly (quotes around \$10,000 have been reported).

## Pros and Cons

- Trailerable pocket cruiser with retractable keel and about 15-inch minimum draft for true shallow-water cruising.
- Comfortable for a couple or small family with berths over 6 feet, ~70 inches of headroom, and seating for four.
- Designed for singlehanded or short-handed sailing with quick tacks and predictable upwind tracking.
- Not a sportboat; moderate acceleration and hull-speed-limited performance may disappoint performance-minded sailors.
- Early-production issues with keel-bulb attachment and rudder retraction exist, though retrofits were developed.
- Downwind course-keeping needs attention, and owners cite occasional keel-jamming worries and service-access challenges.

## Comparison with Other Models

Model	LOA	Beam	Draft	Speed (Cruising/Max)	Gross Tonnage
-------	-----	------	-------	----------------------	---------------

---

26 RK	26' 0" (7.92 m)	8' 0" (2.56 m)	4' 1" (1.25 m) – 19' 8" (6 m)		
-------	-----------------	----------------	-------------------------------	--	--

---

# SPECIFICATIONS

---

**LOA:**

26' 0" (7.92 m)

**Beam:**

8' 0" (2.56 m)

**Water Capacity:**

20 Gallons

**Sleeps:**

2

**Hull Material:**

Fiberglass and Plastic Yachts

**Engines:**

1

**Engine Type:**

Inboard

**Min Draft:**

4' 1" (1.25 m)

**Max Draft:**

19' 8" (6 m)

**Fuel Capacity:**

7 Gallons

**Total Heads:**

1

**Deck Material:**

Fiberglass

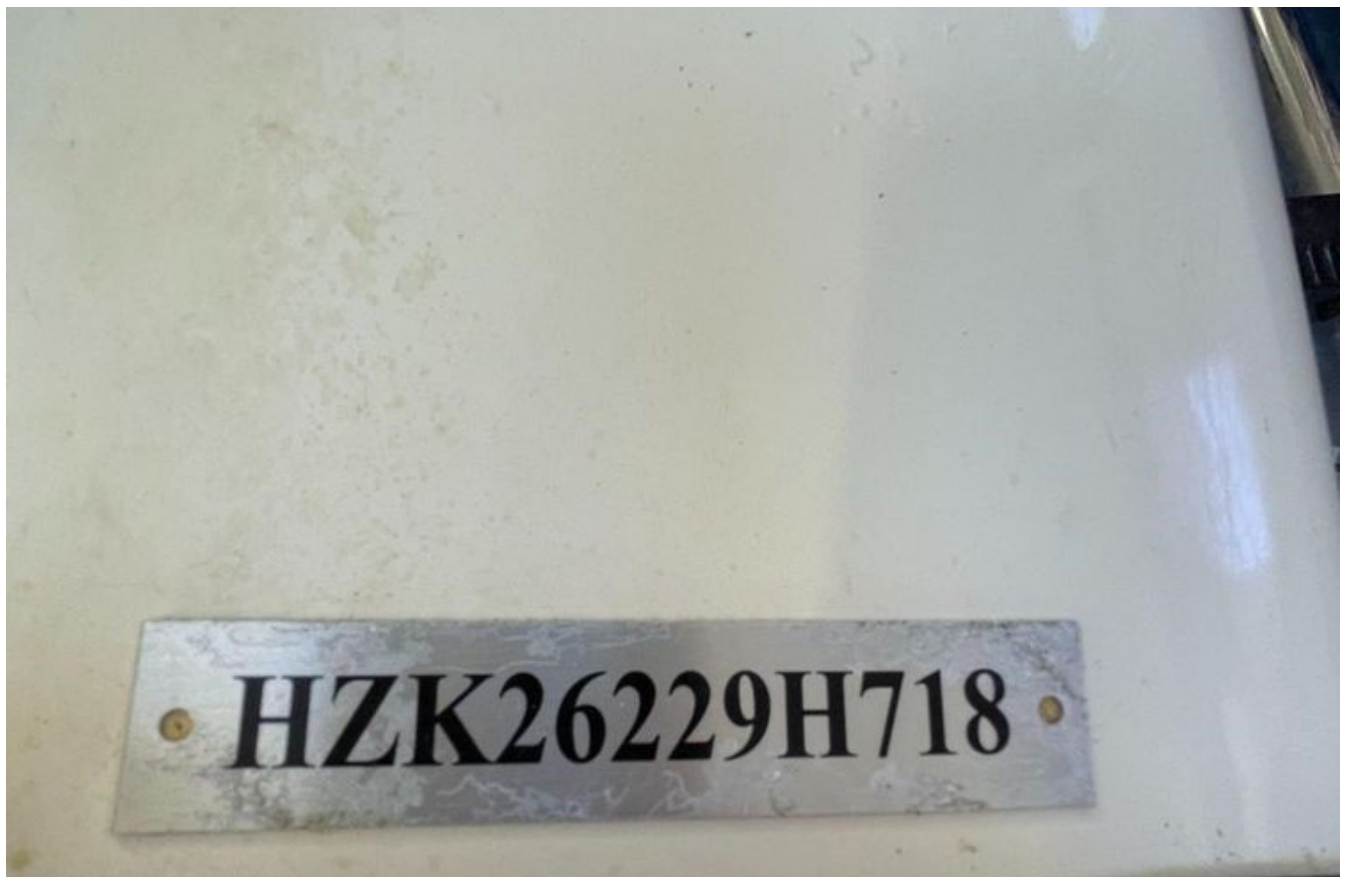
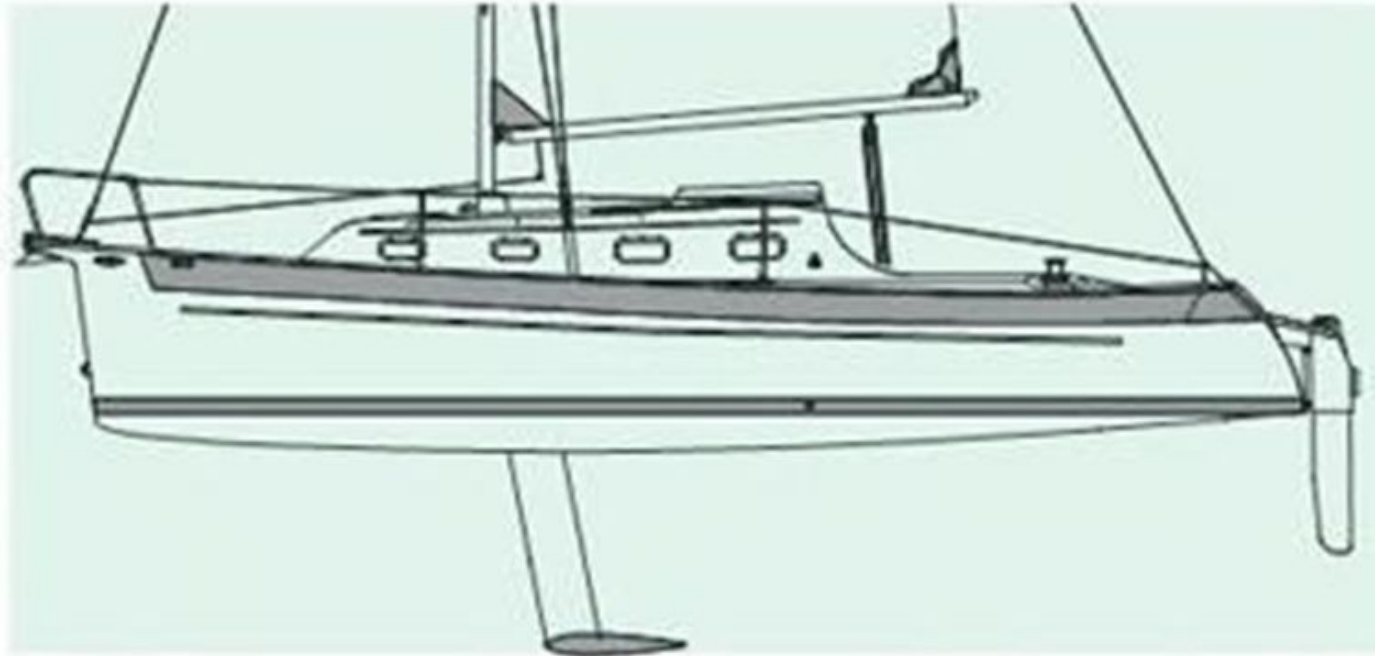
**Manufacturer:**

Yanmar

**Fuel Type:**

Diesel

# GALLERY











# CONTACTS

---

Shestakov Yacht Sales is a brokerage company specializing in the sale and service of yachts worldwide. The company offers services for buying and selling both new and used motor yachts, sailing vessels, and luxury superyachts. They also provide yacht registration, insurance, technical maintenance, crew selection, and charter organization services across the U.S., Canada, Latin America, the Caribbean, and the Bahamas.

The founder and lead broker of the company is Andrey Shestakov, a licensed and certified expert with extensive experience in marine engineering and shipbuilding.

The company has an extensive network of partnerships with major yacht manufacturers worldwide and provides services in multiple languages, including Russian, Ukrainian, Spanish, and English. The office is in Dania Beach, Florida, USA.

For more information and to view available yachts, you can visit the company's official website: <https://shestakovyachtsales.com>

## Contact details

---

**Phone:** +1(954)274-4435

**Email:** [andrey@shestakovyachtsales.com](mailto:andrey@shestakovyachtsales.com)

## Address

---



1380 Weeping Willow Way, Hollywood,  
Florida 33019