



SHESTAKOV

Yacht Sales

SOLARIS 111 – SOLARIS YACHTS



Builder:

SOLARIS YACHTS

Model:

Solaris 111

LOA:

111' 0" (33.83 m)

Beam:

26' 0" (7.90 m)

Max Draft:

65' 2" (19.85 m)

Cruise Speed:

10.5 kn / 12.08 mph

Max Speed:

13 kn / 14.96 mph

Gross Tonnage:

133 Pounds

Water Capacity:

449.09 Gallons

Fuel Capacity:

1154.43 Gallons

Hull Material:

Fiberglass and Plastic Yachts

Deck Material:

Carbon Fiber

If you would like to buy a yacht **SOLARIS 111 – SOLARIS YACHTS** or would like help, please call +1(954)274-4435 or visit shestakovyachtsales.com

TABLE OF CONTENTS

OVERVIEW 3

- Selecting a Solaris 111 3
- Features of the Model 3
- Technical Specifications 4
- Pricing and Ordering 4
- Questions and Answers 4
- Owner Experience Review 5
- Pros and Cons 6
- Comparison with Other Models 6

SPECIFICATIONS 8

GALLERY 9

CONTACTS 14

OVERVIEW

The Solaris 111 by SOLARIS YACHTS is an elegant sailing yacht built with a durable fiberglass hull and a lightweight carbon fiber deck. Stretching 111 ft (33.83 m) overall with a 26 ft (7.9 m) beam and sleeping accommodations for up to nine guests, she delivers a successful mix of seagoing performance and comfortable liveboard spaces. For acquisition advice and transaction support, consult Andrey Shestakov and the team at Shestakov Yacht Sales.

Selecting a Solaris 111

Opting for the Solaris 111 appeals to owners who want a sizable, contemporary sailing yacht that can handle long passages while offering substantial interior volume. Its single inboard Cummins diesel, significant fuel and water reserves, and carbon fiber deck construction underline a purposeful approach to efficient cruising. Shestakov Yacht Sales, led by broker Andrey Shestakov, will assist you in matching build specifications and delivery timing to your cruising program.

Features of the Model

- Type: performance-oriented sailing yacht
- Construction: fiberglass hull with a carbon fiber deck
- Dimensions: 111 ft (33.83 m) LOA; 26 ft (7.9 m) beam
- Draft: maximum 65.125 ft (19.85 m)
- Power: single inboard SOLARIS YACHTS fit with 1x Cummins diesel
- Speeds: 10.5 kn cruising; 13 kn maximum (12.08 mph and 14.96 mph respectively)
- Capacities: 1,154.43 gal fuel; 449.09 gal water
- Accommodation: up to 9

- Gross tonnage: 133 GT

Technical Specifications

- LOA: 111 ft (33.83 m)
- Beam: 26 ft (7.9 m)
- Maximum draft: 65.125 ft (19.85 m)
- Hull: fiberglass; Deck: Carbon Fiber
- Engines: 1x Cummins; Inboard; Diesel
- Cruising speed: 10.5 kn (12.08 mph)
- Maximum speed: 13 kn (14.96 mph)
- Gross tonnage: 133
- Accommodation: 9
- Fuel capacity: 1,154.43 gal
- Water capacity: 449.09 gal

Pricing and Ordering

To obtain up-to-date pricing, detailed build options, and delivery estimates for the Solaris 111, contact Andrey Shestakov at Shestakov Yacht Sales. Our brokerage will manage customization choices, technical reviews, and the transaction process in close coordination with SOLARIS YACHTS to simplify your purchase.

Questions and Answers

Q: What type of yacht is the Solaris 111? A: It's a sailing yacht built with a fiberglass hull and a carbon fiber deck. This build combination supports robust structural integrity and manageable upkeep while maintaining the performance and comfort expected of this yacht type.

Q: What are the key dimensions and draft? A: The yacht's overall length (LOA) is **111 ft** (33.83 m), the **beam** measures 26 ft (7.9 m), and the **maximum draft** is 65.125 ft (19.85 m), giving her a commanding stance and solid stability under sail.

Q: How fast does it cruise and what is the top speed? A: The reported **cruising speed** is 10.5 knots (12.08 mph), while the **maximum speed** is 13 knots (14.96 mph), delivering an efficient balance for passage-making.

Q: What is the engine setup and fuel type? A: Propulsion is by a **single engine**, a Cummins **inboard** running on **diesel**. The tankage includes a **fuel capacity** of 1,154.43 gallons to support extended voyages.

Q: How many people can stay aboard, and how do I order? A: Accommodations are available for up to **9** people, and the yacht carries **449.09 gallons** of water for comfort on longer trips. To begin the purchase process, contact Andrey Shestakov at **Shestakov Yacht Sales**; our brokerage team will walk you through configuration options and formalities with SOLARIS YACHTS.

Owner Experience Review

Owners who step aboard the Solaris 111 from SOLARIS YACHTS typically operate her as a private superyacht for family cruising, frequently running the vessel with a compact professional crew thanks to an easily managed sailplan. Brokers also note that she adapts well to charter use, suiting owners who split time between private enjoyment and occasional commercial charters.

Responses from helmsmen emphasize a finely balanced helm—one owner even quipped, "I can hold it with just two fingers." Under sail, the hull is reported to accelerate readily out of a tack, exhibit high pointing ability, and has recorded around 16 knots of boat speed in approximately 15 knots of wind. Despite these sporty traits, owners consistently describe her as "a

comfortable cruising yacht,” underlining the blend of performance and livability for extended passages and family time aboard.

Comfort is anchored by a generous aft owner’s suite of roughly 40 m², complete with a private terrace and direct sea access. MYT-designed interiors bring motor yacht standards—climate control, effective sound insulation, and expansive interior volumes—that reinforce the Solaris 111’s dual role as an engaging performer and a refined long-range cruiser.

Pros and Cons

- Balanced, light helm with quick acceleration from tacks and strong pointing ability.
- Real-world pace, with reports of ~16 knots in 15 knots of wind.
- Large aft owner’s suite with private terrace plus motor yacht level climate and noise comfort.
- Prepreg full carbon build drives higher survey/refit costs and needs specialist composite repairs.
- Telescopic keel (approx. 3.9–6.05 m draft) relies on hydraulics that require scheduled specialist servicing.
- Big sail wardrobe, performance rigging, and auxiliary systems expand routine maintenance and costs.

Comparison with Other Models

Model	LOA	Beam	Draft	Speed (Cruising/Max)	Gross Tonnage
52 open	53' 0" (16.15 m)	16' 0" (4.95 m)			
SP 48 Open	48' 0" (14.63 m)	15' 0" (4.85 m)	11' 3" (3.42 m)	26 kn / 36 kn	

44 Open	44' 0" (13.41 m)	14' 0" (4.34 m)	10' 11" (3.33 m)	22 kn / 33 kn	
48 Open	48' 0" (14.63 m)	16' 0" (4.88 m)	13' 11" (4.25 m)	25 kn / 34 kn	15.4
64 RS	63' 0" (19.40 m)	17' 0" (5.40 m)	8' 0" (2.45 m) – 10' 10" (3.30 m)		
Power 60 Coupe	53' 0" (16.43 m)	17' 0" (5.36 m)	5' 7" (1.70 m)	28 kn / 36 kn	
N/A	39' 0" (11.96 m)				
Solaris 111	111' 0" (33.83 m)	26' 0" (7.90 m)	65' 2" (19.85 m)	10.5 kn / 13 kn	133

SPECIFICATIONS

LOA:

111' 0" (33.83 m)

Max Draft:

65' 2" (19.85 m)

Cruise Speed:

10.5 kn / 12.08 mph

Gross Tonnage:

133 Pounds

Fuel Capacity:

1154.43 Gallons

Hull Material:

Fiberglass and Plastic Yachts

Engines:

1

Engine Type:

Inboard

Beam:

26' 0" (7.90 m)

Max Speed:

13 kn / 14.96 mph

Water Capacity:

449.09 Gallons

Deck Material:

Carbon Fiber

Manufacturer:

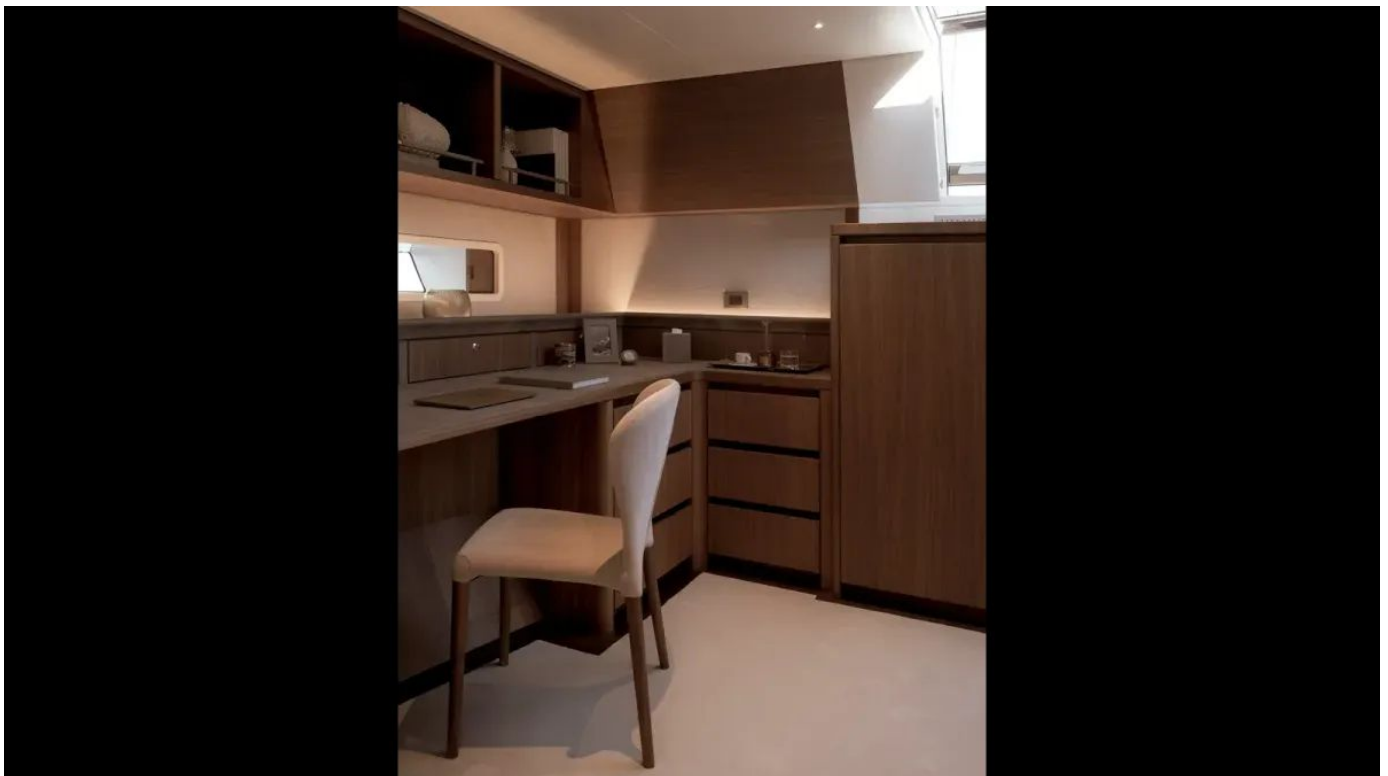
Cummins

Fuel Type:

Diesel

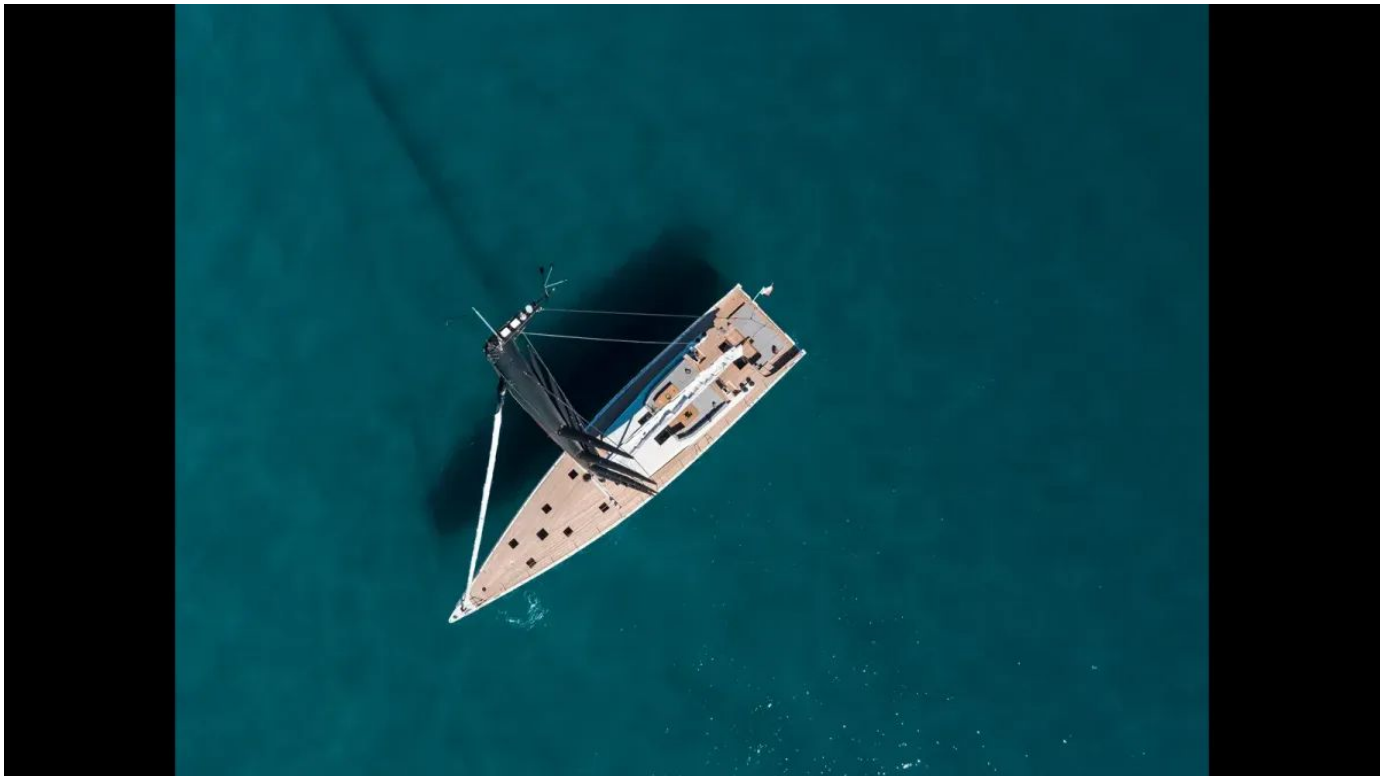
GALLERY











CONTACTS

Shestakov Yacht Sales is a brokerage company specializing in the sale and service of yachts worldwide. The company offers services for buying and selling both new and used motor yachts, sailing vessels, and luxury superyachts. They also provide yacht registration, insurance, technical maintenance, crew selection, and charter organization services across the U.S., Canada, Latin America, the Caribbean, and the Bahamas.

The founder and lead broker of the company is Andrey Shestakov, a licensed and certified expert with extensive experience in marine engineering and shipbuilding.

The company has an extensive network of partnerships with major yacht manufacturers worldwide and provides services in multiple languages, including Russian, Ukrainian, Spanish, and English. The office is in Dania Beach, Florida, USA.

For more information and to view available yachts, you can visit the company's official website: <https://shestakovyachtsales.com>

Contact details

Phone: +1(954)274-4435

Email: andrey@shestakovyachtsales.com

Address



1380 Weeping Willow Way, Hollywood,
Florida 33019