



SHESTAKOV

Yacht Sales

## BRONSON 65 – STEELER YACHTS



**Builder:**  
STEELER YACHTS

**Model:**  
BRONSON 65

**LOA:**  
61' 0" (18.80 m)

**Min Draft:**  
3' 11" (1.20 m)

**Beam:**  
17' 0" (5.25 m)

**Max Draft:**  
4' 11" (1.50 m)

**Cruise Speed:**  
12 kn / 13.81 mph

**Max Speed:**  
15 kn / 17.26 mph

**Gross Tonnage:**  
42 Pounds

**Water Capacity:**  
211.34 Gallons

**Fuel Capacity:**  
792.52 Gallons

**Sleeps:**  
6

If you would like to buy a yacht **BRONSON 65 – STEELER YACHTS** or would like help, please call +1(954)274-4435 or visit [shestakovyachtsales.com](http://shestakovyachtsales.com)

---

# TABLE OF CONTENTS

---

<b>OVERVIEW .....</b>	<b>3</b>
<b>Selecting a BRONSON 65 .....</b>	<b>3</b>
<b>Features of the Model .....</b>	<b>3</b>
<b>Technical Specifications .....</b>	<b>4</b>
<b>Pricing and Ordering .....</b>	<b>4</b>
<b>Questions and Answers .....</b>	<b>5</b>
<b>Owner Experience Review .....</b>	<b>5</b>
<b>Pros and Cons .....</b>	<b>6</b>
<b>Comparison with Other Models .....</b>	<b>7</b>
<b>SPECIFICATIONS .....</b>	<b>8</b>
<b>GALLERY .....</b>	<b>9</b>
<b>CONTACTS .....</b>	<b>14</b>

## OVERVIEW

---

Presented by Shestakov Yacht Sales, the BRONSON 65 from STEELER YACHTS is a modern motor yacht built on a steel hull with a Semi-Displacement hull form, engineered to cruise confidently at 12 knots with a top speed near 15 knots. For personalized advice, specifications, and current availability, contact Andrey Shestakov.

## Selecting a BRONSON 65

---

If you are looking for a robust steel-built cruiser within the premium motor yachts category, the BRONSON 65 is a compelling option. Measuring 61 ft (18.8 m) LOA with a 17 ft (5.25 m) beam, it delivers ample interior volume rated at 42 GT, and a shallow draft range of 3.937–4.921 ft (1.2–1.5 m) suitable for varied cruising grounds. The layout accommodates six overnight guests plus a dedicated crew cabin for two, while twin Volvo Penta diesel engines provide dependable passage-making with a 12 knot cruise and a 15 knot top speed.

## Features of the Model

---

- Twin Volvo Penta diesel propulsion (2 engines) engineered for an efficient 12 kn cruise and a 15 kn maximum (approx. 13.81/17.26 mph)
- Semi-Displacement running surface constructed in steel construction; deck finished in Steel
- Hull and interior styling by STEELER YACHTS
- Accommodation for 6 guests across the layout with 3 heads; separate crew cabin designed for 2
- Capacities to support extended weekends: fuel tank 792.52 gal; fresh water tank 211.34 gal
- Dimensions optimised for flexible cruising: LOA 61 ft (18.8 m), beam 17 ft

(5.25 m), draft 3.937–4.921 ft (1.2–1.5 m)

## Technical Specifications

---

- Category: motor yacht within motor yachts
- Builder: STEELER YACHTS
- Model: BRONSON 65
- Hull configuration: Semi-Displacement
- Hull material: steel hull; deck material: Steel
- LOA: 61 ft (18.8 m)
- Beam: 17 ft (5.25 m)
- Draft: 3.937–4.921 ft (1.2–1.5 m)
- Gross tonnage: 42 GT
- Engines: 2 x Volvo Penta, Diesel
- Cruise speed: 12 kn (13.81 mph)
- Max speed: 15 kn (17.26 mph)
- Fuel capacity: 792.52 gal
- Fresh water capacity: 211.34 gal
- Accommodation: sleeps 6; heads: 3
- Crew: 1 cabin; 2 beds
- Hull designer: STEELER YACHTS
- Interior designer: STEELER YACHTS

## Pricing and Ordering

---

To obtain up-to-date pricing, production lead times, and delivery estimates for the BRONSON 65, contact Shestakov Yacht Sales. Andrey Shestakov will guide you through specification choices, available options, and the contracting process to secure your build slot with STEELER YACHTS.

---

## Questions and Answers

---

Q1: What are the speeds of the BRONSON 65? A1: The model offers a **cruise speed of 12 knots** (13.81 mph) and a **maximum speed of 15 knots** (17.26 mph).

Q2: What hull type and material does it use? A2: It features a **Semi-Displacement** hull in **steel construction** , combining strength with efficient running characteristics.

Q3: How many people can it accommodate? A3: The yacht **sleeps 6** with **3 heads** and includes a **crew cabin for 2** , ideal for owner-operators or light crewed cruising.

Q4: Who builds and designs the yacht? A4: STEELER YACHTS is the **builder** , **hull designer** , and **interior designer** of the BRONSON 65.

Q5: How do I order through Shestakov Yacht Sales? A5: Reach out to **Shestakov Yacht Sales ; Andrey Shestakov** will provide specifications, availability, and a path to contract for your motor yacht in the motor yachts segment.

---

## Owner Experience Review

---

Owners and reviewers stepping aboard the BRONSON 65 from STEELER YACHTS praise a functional layout that suits both full days on the water and overnight stays. The saloon opens onto the aft cockpit, while the raised helm rests under an electrically actuated roof that converts from coupé to open configuration to suit changing weather. Below deck, the two-cabin, two-head plan is anchored by a roomy full beam owner stateroom and a VIP, with generous headroom and a practical galley; multiple reviewers have singled out the lower lounge as excellent for extended cruising, dubbing the concept a

"dayboat for unforgettable nights."

When underway, the deep V hull with its fine entry and reverse bow has earned notice in expert previews for handling waves effectively, with reports consistently referencing a composed, confident ride. Twin Volvo Penta IPS installations (D11 IPS 950 or D13/IPS1350, depending on specification) are credited with brisk acceleration and accurate joystick control. For certain coastal passages, manufacturer materials and expert write-ups reference a quoted cruising speed around 25 knots and a stated range close to 445 nautical miles.

Ownership notes reflect the build materials and onboard systems: the aluminum structure is described as robust and impact resistant but does require careful bonding and anode maintenance and attention to galvanic corrosion risks. IPS pod drives are widely regarded for performance yet follow prescribed dealer service schedules and can carry significant repair costs when work is needed. The substantial stern arrangement — including a tender garage and hydraulic bathing platform — is a highlight of the design but deserves inspection for access and serviceability. More in-depth, long-term owner reports remain limited, as first deliveries are noted for 2025; most current impressions derive from recent expert previews and dealer listings rather than multi-season ownership accounts.

## Pros and Cons

---

- Deep V hull with fine entry and reverse bow delivers a smooth, confident ride in typical conditions.
- Versatile indoor-outdoor living: open saloon to aft cockpit and an electrically adjustable roof for all-weather use.
- Twin Volvo Penta IPS options provide strong acceleration and precise joystick maneuverability.

- Aluminum construction requires diligent bonding/anode management and monitoring for galvanic corrosion.
- IPS pod drives follow dealer level service intervals and can incur non trivial repair costs.
- Limited long term owner feedback so far, with first deliveries noted for 2025.

## Comparison with Other Models

Model	LOA	Beam	Draft	Speed (Cruising/Max)	Gross Tonnage
60S Performance	62' 0" (18.90 m)	17' 0" (5.24 m)	16' 1" (4.90 m) – 16' 9" (5.10 m)	16.5 kn / 28 kn	52.4
Iconic DA 50	50' 0" (15.24 m)	14' 0" (4.42 m)			
BRONSON 65	61' 0" (18.80 m)	17' 0" (5.25 m)	3' 11" (1.20 m) – 4' 11" (1.50 m)	12 kn / 15 kn	42

# SPECIFICATIONS

**LOA:**

61' 0" (18.80 m)

**Beam:**

17' 0" (5.25 m)

**Cruise Speed:**

12 kn / 13.81 mph

**Gross Tonnage:**

42 Pounds

**Fuel Capacity:**

792.52 Gallons

**Sleeps:**

6

**Crew Cabin:**

1

**Hull Material:**

Steel Yachts

**Hull Configuration:**

Semi-Displacement

**Interior Designer:**

Steeler Yachts

**Engines:**

2

**Fuel Type:**

Diesel

**Min Draft:**

3' 11" (1.20 m)

**Max Draft:**

4' 11" (1.50 m)

**Max Speed:**

15 kn / 17.26 mph

**Water Capacity:**

211.34 Gallons

**Total Heads:**

3

**Crew Berths:**

2

**Deck Material:**

Steel

**Hull Designer:**

Steeler Yachts

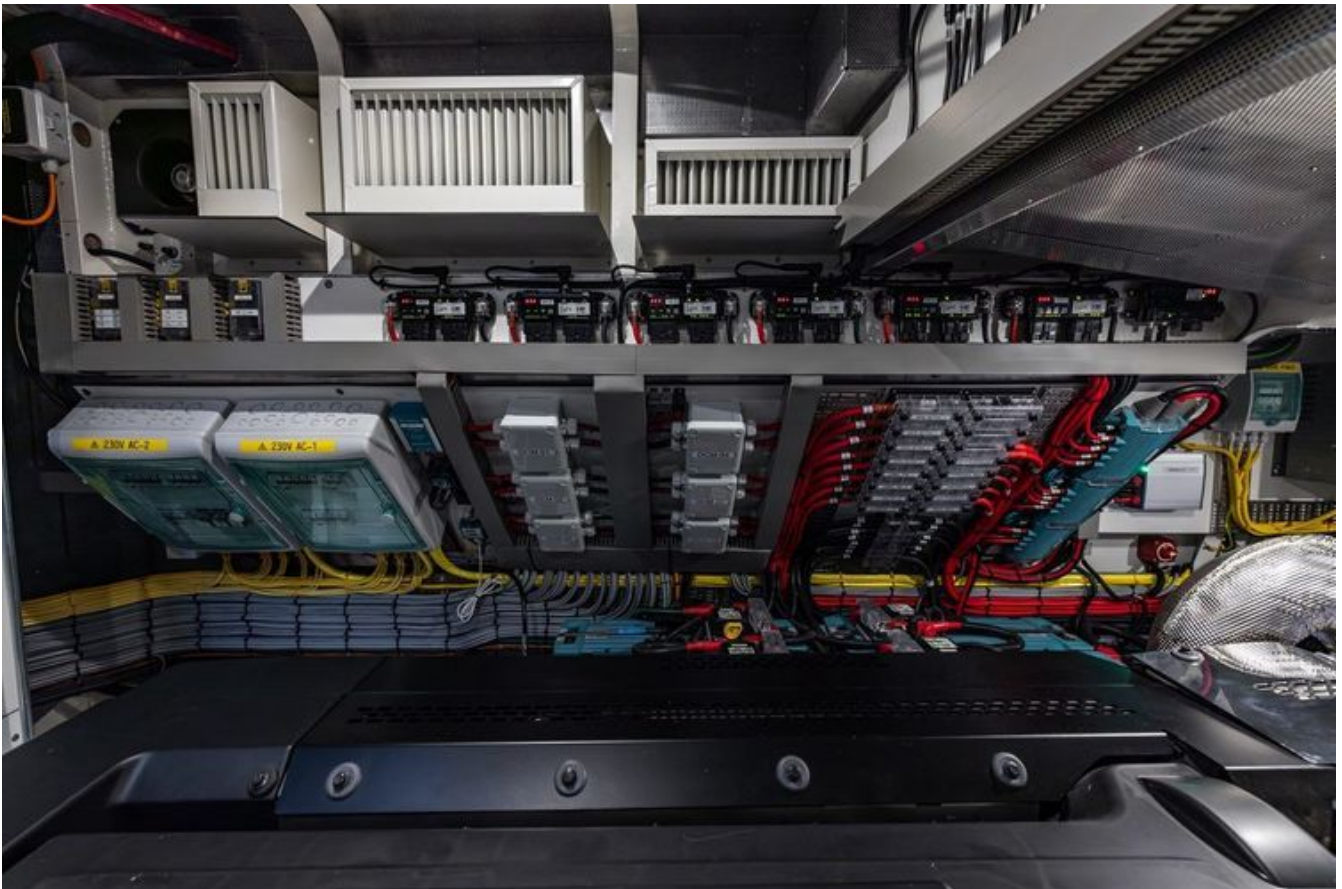
**Manufacturer:**

Volvo Penta

# GALLERY











# CONTACTS

---

Shestakov Yacht Sales is a brokerage company specializing in the sale and service of yachts worldwide. The company offers services for buying and selling both new and used motor yachts, sailing vessels, and luxury superyachts. They also provide yacht registration, insurance, technical maintenance, crew selection, and charter organization services across the U.S., Canada, Latin America, the Caribbean, and the Bahamas.

The founder and lead broker of the company is Andrey Shestakov, a licensed and certified expert with extensive experience in marine engineering and shipbuilding.

The company has an extensive network of partnerships with major yacht manufacturers worldwide and provides services in multiple languages, including Russian, Ukrainian, Spanish, and English. The office is in Dania Beach, Florida, USA.

For more information and to view available yachts, you can visit the company's official website: <https://shestakovyachtsales.com>

## Contact details

---

**Phone:** +1(954)274-4435

**Email:** [andrey@shestakovyachtsales.com](mailto:andrey@shestakovyachtsales.com)

## Address

---



1380 Weeping Willow Way, Hollywood,  
Florida 33019