



SHESTAKOV

Yacht Sales

## 33 DOWNEAST – STUART ANGLER



**Builder:**

STUART ANGLER

**Model:**

33 Downeast

**LOA:**

33' 0" (10.06 m)

**Beam:**

10' 0" (3.05 m)

**Cruise Speed:**

16 kn / 18.41 mph

**Fuel Capacity:**

100 Gallons

**Hull Material:**

Fiberglass and Plastic Yachts

**Deck Material:**

Fiberglass

**Engines:**

1

**Manufacturer:**

Cummins

**Engine Type:**

Inboard

**Fuel Type:**

Diesel

If you would like to buy a yacht **33 DOWNEAST – STUART ANGLER** or would like help, please call +1(954)274-4435 or visit [shestakovyachtsales.com](http://shestakovyachtsales.com)

---

# TABLE OF CONTENTS

---

<b>OVERVIEW .....</b>	<b>3</b>
<b>Selecting a 33 Downeast .....</b>	<b>3</b>
<b>Features of the Model .....</b>	<b>3</b>
<b>Technical Specifications .....</b>	<b>4</b>
<b>Pricing and Ordering .....</b>	<b>4</b>
<b>Questions and Answers .....</b>	<b>5</b>
<b>Owner Experience Review .....</b>	<b>5</b>
<b>Pros and Cons .....</b>	<b>6</b>
<b>Comparison with Other Models .....</b>	<b>7</b>
<b>SPECIFICATIONS .....</b>	<b>8</b>
<b>GALLERY .....</b>	<b>9</b>
<b>CONTACTS .....</b>	<b>14</b>

## OVERVIEW

---

Built by STUART ANGLER, the 33 Downeast is a sturdy motor yacht in the cruiser segment featuring a durable fiberglass and plastic hull and a molded fiberglass deck. Measuring 33 ft (10.06 m) overall with a 10 ft (3.05 m) beam and driven by a single Cummins inboard diesel, it commonly cruises around 16 knots (18.41 mph) — a pace suited to relaxed coastal passages and straightforward owner-operator use.

## Selecting a 33 Downeast

---

When you want uncomplicated systems, the economy of a single diesel, and classic Downeast styling in a compact package, the 33 Downeast is a compelling option. As a motor yacht configured for the cruiser role, its 33-foot length and 10-foot beam strike a balance between easy handling and steady stability. With a 100-gallon fuel tank and a practical 16-knot (18.41 mph) cruising speed, it fits well for day excursions and short coastal hops.

Shestakov Yacht Sales is available to advise on current inventory and condition variations you'll find on the market. Contact broker Andrey Shestakov to determine how this platform aligns with your intended use, slip requirements, and service expectations.

## Features of the Model

---

- Hull and deck: a fiberglass and plastic construction hull combined with a fiberglass deck for longevity and low maintenance.
- Power and drive: a single Cummins inboard diesel engine delivering straightforward, efficient propulsion.
- Cruise capability: a typical cruise of 16 knots (18.41 mph) for comfortable

coastal passages.

- Manageable size: LOA 33 ft (10.06 m), beam 10 ft (3.05 m) for flexible docking and easy singlehanded handling.
- Fuel: 100 gallons of fuel capacity to support routine day cruising with reduced refueling stops.

Andrey Shestakov and the Shestakov Yacht Sales team provide impartial market comparisons, help plan inspections, and support the transaction process for the 33 Downeast.

## Technical Specifications

---

- Builder: STUART ANGLER
- Model: 33 Downeast
- Classification: motor yacht / cruiser
- Hull: fiberglass and plastic
- Deck: Fiberglass
- LOA: 33 ft (10.06 m)
- Beam: 10 ft (3.05 m)
- Cruising speed: 16 knots (18.41 mph)
- Engines: 1 x Cummins
- Engine type: Inboard
- Fuel type: Diesel
- Fuel capacity: 100 gallons

## Pricing and Ordering

---

For up-to-date pricing, availability, and tailored market insight on the 33 Downeast, reach out to Andrey Shestakov at Shestakov Yacht Sales. We will arrange viewings, coordinate surveys, and advise on offer strategy through to closing.

---

## Questions and Answers

---

- Q: What type of yacht is the 33 Downeast? A: It is a **motor yacht** built for the **cruiser** purpose by **STUART ANGLER**, featuring a **fiberglass and plastic hull** paired with a fiberglass deck.
- Q: What is the cruising speed? A: The **cruising speed** is **16 knots (18.41 mph)**, offering a sensible compromise between speed and fuel economy for nearshore passages.
- Q: What are the key dimensions? A: **LOA** measures **33 ft (10.06 m)** and **beam** is **10 ft (3.05 m)**, dimensions that support confident handling and reasonable dockage options.
- Q: What powers the yacht and what fuel does it use? A: The **engine** is a single **Cummins** with an **Inboard** installation; the yacht runs on **diesel** and carries **100 gallons** of fuel.
- Q: How do I get pricing and arrange a viewing? A: **Contact** Andrey Shestakov at **Shestakov Yacht Sales** to review pricing, current listings, and to set up inspections for the 33 Downeast.

---

## Owner Experience Review

---

Owners who run the 33 Downeast from STUART ANGLER commonly split their use between coastal cruising and nearshore or inshore fishing. Listings frequently market the model as a capable day-charter platform, while the compact cabin and galley — with accommodation for three — make short overnight trips for two to three people realistic. On a 33-foot Downeast, the roughly 10-foot beam delivers solid single-cabin volume, though interior outfitting varies considerably between boats.

Underway, these boats behave much like traditional single-inboard, direct-drive Downeasts: steady and predictable rather than agile. Seller reports often note an approximate 16-knot cruise powered by a 330-hp Cummins

6BTA (1995 examples), and the full-keel form is praised for its stability and composure when running into a head sea. That said, owners sometimes report a degree of instability in a following sea, and these hulls are not regarded as especially fuel-efficient for their cruising speeds — they typically demand substantial power to increase speed.

Comfort and maintenance outcomes are highly condition-dependent: many used 33 Downeast listings note cosmetic work ("needs paint") and some boats are offered without a head or generator—items sellers commonly say are straightforward to add during a refit. The Cummins 6BTA is often praised for dependability, although numerous listings reference recent engine or gearbox work consistent with the age of most examples. Forum discussions around STUART ANGLER craft include occasional "horror stories," so cautious buyers should allow budget and time for survey findings and necessary refit work on older vessels.

## Pros and Cons

---

- Versatile platform suitable for coastal cruising, nearshore fishing, and day-charter work.
- Generous interior volume for a 33-foot boat, with sleeping space for three helped by the roughly 10-foot beam.
- Single inboard paired with a full keel yields predictable tracking and composed motion in a head sea.
- Owners report some shakiness when running in a following sea.
- Fuel efficiency is modest for its cruising pace and the boat generally requires significant power to increase speed.
- Many used examples are cosmetically tired or lack a head/generator, which can add time and expense to refit projects.

## Comparison with Other Models

Model	LOA	Beam	Draft	Speed (Cruising/Max)	Gross Tonnage
33 Downeast	33' 0" (10.06 m)	10' 0" (3.05 m)		16 kn	

---

# SPECIFICATIONS

---

**LOA:**

33' 0" (10.06 m)

**Cruise Speed:**

16 kn / 18.41 mph

**Hull Material:**

Fiberglass and Plastic Yachts

**Engines:**

1

**Engine Type:**

Inboard

**Beam:**

10' 0" (3.05 m)

**Fuel Capacity:**

100 Gallons

**Deck Material:**

Fiberglass

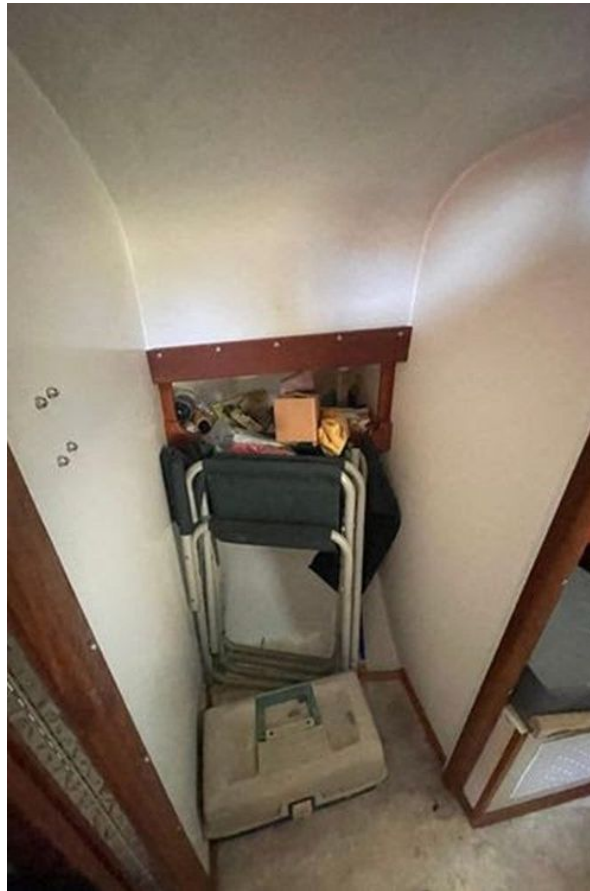
**Manufacturer:**

Cummins

**Fuel Type:**

Diesel

# GALLERY











# CONTACTS

---

Shestakov Yacht Sales is a brokerage company specializing in the sale and service of yachts worldwide. The company offers services for buying and selling both new and used motor yachts, sailing vessels, and luxury superyachts. They also provide yacht registration, insurance, technical maintenance, crew selection, and charter organization services across the U.S., Canada, Latin America, the Caribbean, and the Bahamas.

The founder and lead broker of the company is Andrey Shestakov, a licensed and certified expert with extensive experience in marine engineering and shipbuilding.

The company has an extensive network of partnerships with major yacht manufacturers worldwide and provides services in multiple languages, including Russian, Ukrainian, Spanish, and English. The office is in Dania Beach, Florida, USA.

For more information and to view available yachts, you can visit the company's official website: <https://shestakovyachtsales.com>

## Contact details

---

**Phone:** +1(954)274-4435

**Email:** [andrey@shestakovyachtsales.com](mailto:andrey@shestakovyachtsales.com)

## Address

---



1380 Weeping Willow Way, Hollywood,  
Florida 33019