



SHESTAKOV

Yacht Sales

14 X 58 ALUMINUM HULL WITH CATWALKS - SUMERSET HOUSEBOATS



Builder:

SUMERSET HOUSEBOATS

Model:

14 x 58 Aluminum Hull with Catwalks

LOA:

58' 0" (17.68 m)

Beam:

14' 0" (4.27 m)

Water Capacity:

185 Gallons

Fuel Capacity:

100 Gallons

Sleeps:

5

Total Heads:

1

Hull Material:

Aluminum Yachts

Deck Material:

Aluminum

Engines:

1

Manufacturer:

MerCruiser

If you would like to buy a yacht **14 X 58 ALUMINUM HULL WITH CATWALKS - SUMERSET HOUSEBOATS** or would like help, please call +1(954)274-4435 or visit shestakovyachtsales.com

TABLE OF CONTENTS

OVERVIEW	3
Selecting a 14 x 58 Aluminum Hull with Catwalks	3
Features of the Model	3
Technical Specifications	4
Pricing and Ordering	4
Questions and Answers	4
Owner Experience Review	5
Pros and Cons	6
Comparison with Other Models	6
SPECIFICATIONS	8
GALLERY	9
CONTACTS	14

OVERVIEW

The 14 x 58 Aluminum Hull with Catwalks from SUMERSET HOUSEBOATS is an airy, accommodation-focused houseboat positioned in the motor yacht market and built atop an aluminum hull. This listing is presented by Andrey Shestakov of Shestakov Yacht Sales.

Selecting a 14 x 58 Aluminum Hull with Catwalks

Measuring 58 ft (17.68 m) overall with a 14 ft (4.27 m) beam, the 14 x 58 Aluminum Hull with Catwalks delivers a compromise between roomy liveaboard space and manageable handling. As a purpose-designed houseboat within the motor yacht category, it emphasizes comfortable afloat living supported by an aluminum hull and aluminum deck. The layout accommodates up to five people with a single head, making it a solid choice for family cruises and weekend stays; propulsion comes from one Mercruiser I/O on gas/petrol for straightforward operation and maintenance. The model designation also highlights exterior catwalks that ease movement around the superstructure.

Features of the Model

- Dimensions tuned for comfortable living: LOA 58 ft (17.68 m), beam 14 ft (4.27 m)
- Construction: aluminum hull with aluminum deck
- Propulsion: 1 x Mercruiser I/O, Gas/Petrol
- Accommodations: Sleeps 5; 1 head
- Capacities: Water 185 gal; Fuel 100 gal
- Catwalks included as part of the model name

Technical Specifications

- Length Overall (LOA): 58 ft (17.68 m)
- Beam: 14 ft (4.27 m)
- Engines: 1 x Mercruiser
- Engine Type: I/O
- Fuel Type: Gas/Petrol
- Hull: aluminum construction
- Deck: Aluminum
- Sleeps: 5
- Heads: 1
- Water Capacity: 185 gal
- Fuel Capacity: 100 gal

Pricing and Ordering

To obtain current pricing, check availability, or schedule an inspection of the 14 x 58 Aluminum Hull with Catwalks, please contact Andrey Shestakov at Shestakov Yacht Sales. Our brokerage team will assist with detailed specifications, survey arrangements, and the logistical steps needed to complete a purchase of this houseboat in the motor yacht category.

Questions and Answers

Q: What type of vessel is this model? A: It is a **houseboat** houseboat classified within the **motor yacht** motor yacht segment, constructed on an **aluminum** aluminum hull chassis.

Q: How many people can it sleep? A: The vessel offers **sleeps for 5** and includes **1 head** , providing practical overnight accommodation for small

groups or families.

Q: What engine does it have and what fuel does it use? A: Power is supplied by **1 x Mercruiser** in an **I/O** configuration, operating on **Gas/Petrol** .

Q: What are the principal dimensions? A: The principal dimensions are **LOA** of **58 ft (17.68 m)** and a **beam** of **14 ft (4.27 m)** .

Q: What are the tank capacities? A: The vessel carries **Water capacity** of **185 gal** and a **fuel capacity** of **100 gal** , supporting extended stays aboard.

Owner Experience Review

Owners are commonly drawn to the 14 x 58 Aluminum Hull with Catwalks from SUMERSET HOUSEBOATS for family-oriented cruising and weekend escapes, appreciating the roomy 14-by-58 footprint that typically features two staterooms and convertible settees that can sleep an estimated six to nine people. The galley arrangements often include full-size appliances, climate control is achieved via roof-mounted A/C units, and many owners praise the solid wood cabinetry for its domestic feel. Reported interior headroom generally ranges from about 6 feet 9 inches to 6 feet 11 inches, making the layout suitable for liveaboard or seasonal residential use. Configurations also adapt well to casual charter or rental operations, with owner-friendly amenities such as PWC ports and water slides found on some examples.

Underway, the lightweight aluminum hull helps keep displacement down and contributes to a sense of steadiness; several owners note it handles beam seas better than many comparable boats of similar length, though the design is oriented toward lakes and inland waterways rather than offshore conditions. Maneuvering is straightforward with a single MerCruiser sterndrive, but actual performance and responsiveness are closely tied to the mechanical condition of the engine and outdrive.

Maintenance needs are often likened to those of a small home: regular upkeep and repair bills accumulate, and a number of owners have reported roof-coating issues (including treatments like Linex) that required hands-on repairs. Market listings frequently show older or recently serviced engines and generators, and in some cases gensets are reported as non-operational, so thorough pre-purchase surveys and a complete review of service history are strongly advised. A subset of owners also report limited factory warranty or after-sales support following changes in company operations.

Pros and Cons

- Spacious 14-by-58 layout with two cabins and convertible sofas, accommodating family weekends for 6–9.
- Aluminum hull provides relatively low weight and dependable stability, especially in beam seas on lakes.
- Home-like amenities include full-size kitchen appliances, roof-mounted A/C, and attractive solid wood cabinetry.
- Designed primarily for lakes and inland waterways; not intended for extended offshore passages.
- Handling and overall performance hinge on the condition of the single MerCruiser engine and associated outdrive.
- Older examples can entail higher maintenance costs, potential roof-coating repairs, and limited warranty/support options.

Comparison with Other Models

Model	LOA	Beam	Dr...	Speed (Cruising/...	Gross...
House Boat	92' 0" (28.04 m)	18' 0" (5.49 m)			
14 x 58 Aluminum Hull with Catwalks	58' 0" (17.68 m)	14' 0" (4.27 m)			

82'x18'	82' 0" (24.99 m)	18' 0" (5.49 m)			
---------	------------------	-----------------	--	--	--

SPECIFICATIONS

LOA:

58' 0" (17.68 m)

Water Capacity:

185 Gallons

Sleeps:

5

Hull Material:

Aluminum Yachts

Engines:

1

Engine Type:

I/O

Beam:

14' 0" (4.27 m)

Fuel Capacity:

100 Gallons

Total Heads:

1

Deck Material:

Aluminum

Manufacturer:

MerCruiser

Fuel Type:

Gas/Petrol

GALLERY



UID:2725

Plan View:

Dimensions:

- (1) Monolithic frame: 59'x14' (enclosed area: 40'x12')
- (2) AS Deck with 8'x10' shed: 60'x12'
- (3) AS Jet Ski Port: 12'x5'

House Height: 14'

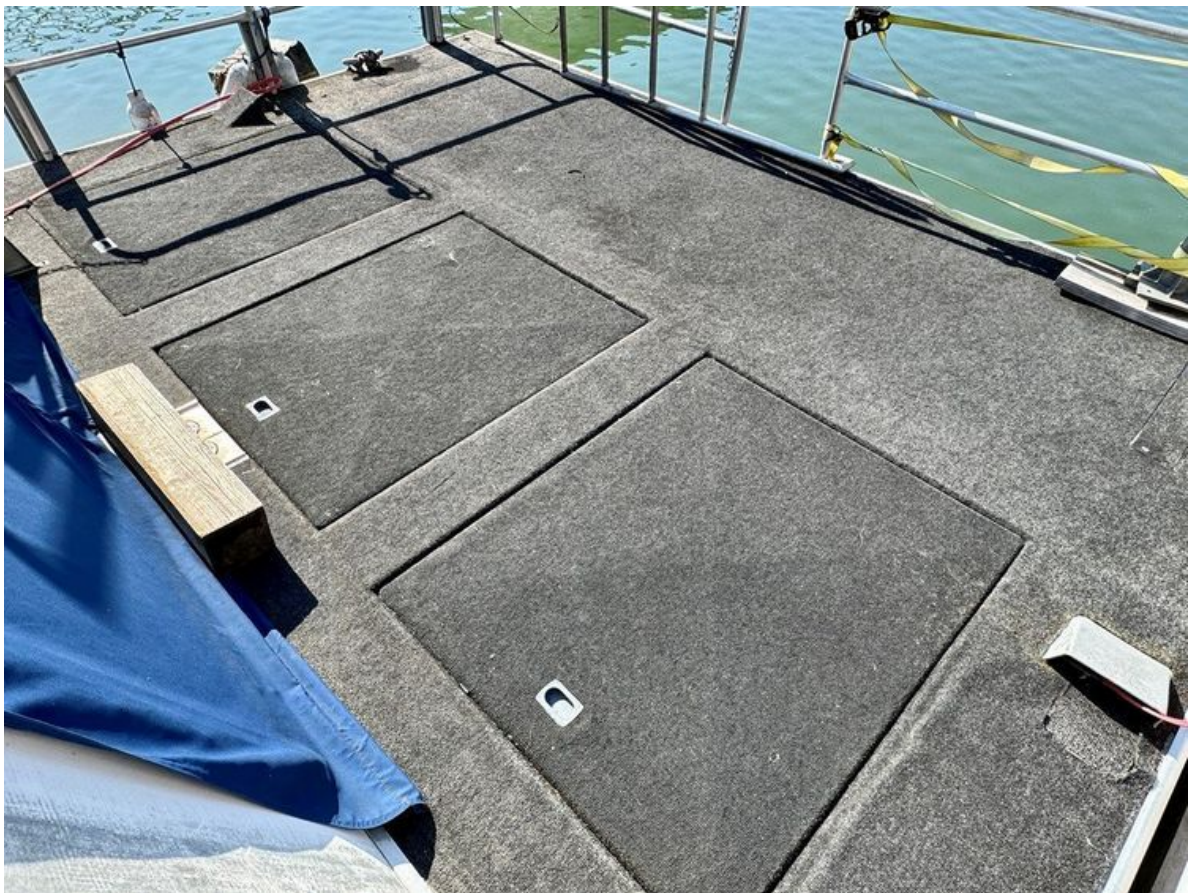
Rebuild Requirements:

1. Written approval from TVA in advance before starting work
2. Rebuilt to the exact configuration, total footprint, and dimensions (length, width and height)
3. Approval of removal plans of the existing floating cabin that will be removed

AS = Attached Structures









CONTACTS

Shestakov Yacht Sales is a brokerage company specializing in the sale and service of yachts worldwide. The company offers services for buying and selling both new and used motor yachts, sailing vessels, and luxury superyachts. They also provide yacht registration, insurance, technical maintenance, crew selection, and charter organization services across the U.S., Canada, Latin America, the Caribbean, and the Bahamas.

The founder and lead broker of the company is Andrey Shestakov, a licensed and certified expert with extensive experience in marine engineering and shipbuilding.

The company has an extensive network of partnerships with major yacht manufacturers worldwide and provides services in multiple languages, including Russian, Ukrainian, Spanish, and English. The office is in Dania Beach, Florida, USA.

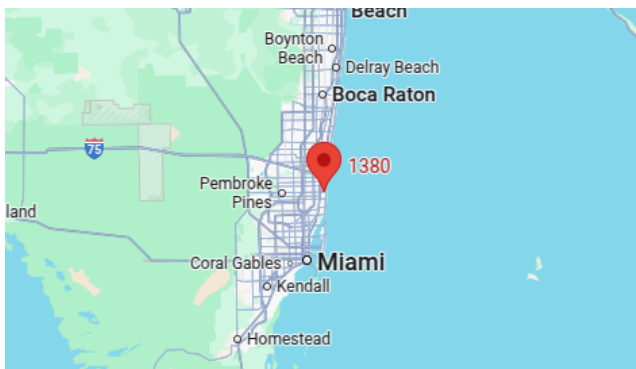
For more information and to view available yachts, you can visit the company's official website: <https://shestakovyachtsales.com>

Contact details

Phone: +1(954)274-4435

Email: andrey@shestakovyachtsales.com

Address



1380 Weeping Willow Way, Hollywood,
Florida 33019