



SHESTAKOV

Yacht Sales

62 - SUNREEF



Builder:

SUNREEF

Model:

62

LOA:

62' 0" (18.90 m)

Beam:

30' 0" (9.30 m)

Max Draft:

17' 9" (5.42 m)

Water Capacity:

206 Gallons

Fuel Capacity:

475 Gallons

Total Heads:

4

Hull Material:

Fiberglass and Plastic Yachts

Deck Material:

Fiberglass

Hull Configuration:

Catamaran

Engines:

1

If you would like to buy a yacht **62 - SUNREEF** or would like help, please call +1(954)274-4435 or visit shestakovyachtsales.com

TABLE OF CONTENTS

OVERVIEW	3
Selecting a 62	3
Features of the Model	3
Technical Specifications	4
Pricing and Ordering	4
Questions and Answers	4
Owner Experience Review	5
Pros and Cons	6
Comparison with Other Models	6
SPECIFICATIONS	7
GALLERY	8
CONTACTS	13

OVERVIEW

The 62 from SUNREEF is presented as a sophisticated sailing yacht in a two hull layout, built around a robust fiberglass-and-plastic hull to deliver roomy interiors and the fuel/water capacity needed for extended voyages. International representation and sales coordination are handled by Shestakov Yacht Sales, with broker Andrey Shestakov providing specialist support.

Selecting a 62

Opting for the 62 prioritizes onboard volume and liveability: at 62 ft (18.9 m) LOA and a 30 ft (9.3 m) beam, the design yields substantial living and deck areas well suited to family cruising or charter operations. The catamaran arrangement enhances transverse stability and generous deck space, while tankage—475 gallons of fuel and 206 gallons of fresh water—permits longer legs between stops. Connect with Shestakov Yacht Sales and broker Andrey Shestakov to tailor layouts and specifications to your program and to guide you through the acquisition process.

Features of the Model

- LOA of 62 ft (18.9 m) delivering significant internal volume
- Broad 30 ft (9.3 m) beam providing expansive sociable and lounging zones
- Max draft of 17.771 ft (5.4166 m)
- Single Yanmar diesel engine for uncomplicated propulsion and straightforward servicing
- Four heads to accommodate multi-guest or charter configurations
- Hull in a fiberglass-and-plastic construction; deck material: Fiberglass
- Purpose-built catamaran arrangement focused on comfort and stability underway

Technical Specifications

- Length overall (LOA): 62 ft / 18.9 m
- Beam: 30 ft / 9.3 m
- Max draft: 17.771 ft / 5.4166 m
- Propulsion: 1 x Yanmar; fuel type: Diesel
- Hull configuration: catamaran
- Hull material: fiberglass and plastic
- Deck material: Fiberglass
- Heads: 4
- Fuel capacity: 475 gal
- Water capacity: 206 gal

Pricing and Ordering

For current pricing, build lead times, and availability of the 62 from SUNREEF, please request detailed information. Contact Shestakov Yacht Sales and speak with broker Andrey Shestakov for bespoke advice, up to date market insight, and to arrange inspections or to submit an offer.

Questions and Answers

Q: What type of yacht is the 62? A: It is a sailing yacht laid out as a catamaran built around a rugged fiberglass-and-plastic hull.

Q: What are the key dimensions? A: The 62 features an **LOA of 62 ft (18.9 m)**, a **beam of 30 ft (9.3 m)**, and a **max draft of 17.771 ft (5.4166 m)**.

Q: What powers the yacht? A: A **single Yanmar diesel** engine supplies propulsion, chosen for simplicity and ease of maintenance.

Q: How is it appointed for onboard living? A: The yacht is fitted with **4 heads**

and tankage of **475 gal fuel** and **206 gal water** , supporting extended cruising and guest comfort.

Q: How do I buy through Shestakov Yacht Sales? A: Contact **Shestakov Yacht Sales** and broker **Andrey Shestakov** to discuss the 62 by SUNREEF, review options and availability, and to start the process for offers or surveys.

Owner Experience Review

Owners and professional skippers commonly select the SUNREEF 62 for fully crewed charter programs in regions such as the Caribbean and Southeast Asia, as well as for family passages and lively weekend cruising. The interior is repeatedly reported as very bright and airy, benefitting from numerous windows and generous storage; each hull typically offers a roomy aft cabin, while the central galley and an expansive, configurable flybridge simplify everyday living and hosting. Layout flexibility—offered in owner, semi owner, and charter formats with roughly 3–5 cabins—allows the platform to serve private owners and commercial charter operators alike.

Underway, reviews emphasize a composed, steady motion that helps mitigate seasickness; the design prioritizes comfortable passage making rather than racing performance. The carbon rig and significant sail area, together with twin diesels (typically 2×100–110 HP), provide reliable passage making capability. Several 62 examples have completed transatlantic crossings, demonstrating genuine bluewater potential, although owners caution that the large flybridge and increased windage demand careful sail trim and seamanship.

Maintenance experiences differ between individual boats: anticipate normal new build teething issues and plan periodic system upgrades—particularly to electrical systems, rigging, and other onboard systems—some of which are housed in dedicated service spaces; a number of owners have also raised concerns about wiring and systems installation quality on specific builds.

Pros and Cons

- Spacious, light filled saloon, large aft cabins, and a central galley create an inviting environment for living and entertaining.
- A smooth, stable motion that reduces seasickness and suits guest oriented charter operations.
- A bluewater capable platform equipped with a carbon rig and twin 2×100–110 HP diesels for reliable passages.
- Not designed for racing; the sailing character favors comfort over sporty performance.
- The sizeable flybridge increases windage and can influence trim, requiring attentive sail management.
- Fit and finish varies across builds, with some owners reporting electrical wiring issues and early new boat teething problems.

Comparison with Other Models

Model	LOA	Beam	Draft	Speed (Cruising/...	Gross...
62	62' 0" (18.90 m)	30' 0" (9.30 m)	17' 9" (5.42 m)		
ULTIMA 111	111' 0" (33.83 m)	37' 0" (11.28 m)			
100 Sunreef Power NEXT	100' 0" (30.48 m)				
ULTIMA 88	88' 0" (26.82 m)			15 kn / 20 kn	
60 Sunreef Power	80' 0" (24.38 m)	35' 0" (10.67 m)			
SUNREEF 43M	141' 0" (43 m)				
40M SUNREEF EXPLORER	131' 0" (40 m)	43' 0" (13.34 m)			
Sunreef 80 NEXT	80' 0" (24.38 m)	38' 0" (11.58 m)			
Sunreef 70 NEXT	70' 0" (21.34 m)	36' 0" (10.97 m)			
SUNREEF 35M	114' 0" (35 m)				

SPECIFICATIONS

LOA:

62' 0" (18.90 m)

Max Draft:

17' 9" (5.42 m)

Water Capacity:

206 Gallons

Total Heads:

4

Hull Material:

Fiberglass and Plastic Yachts

Hull Configuration:

Catamaran

Engines:

1

Fuel Type:

Diesel

Beam:

30' 0" (9.30 m)

Fuel Capacity:

475 Gallons

Deck Material:

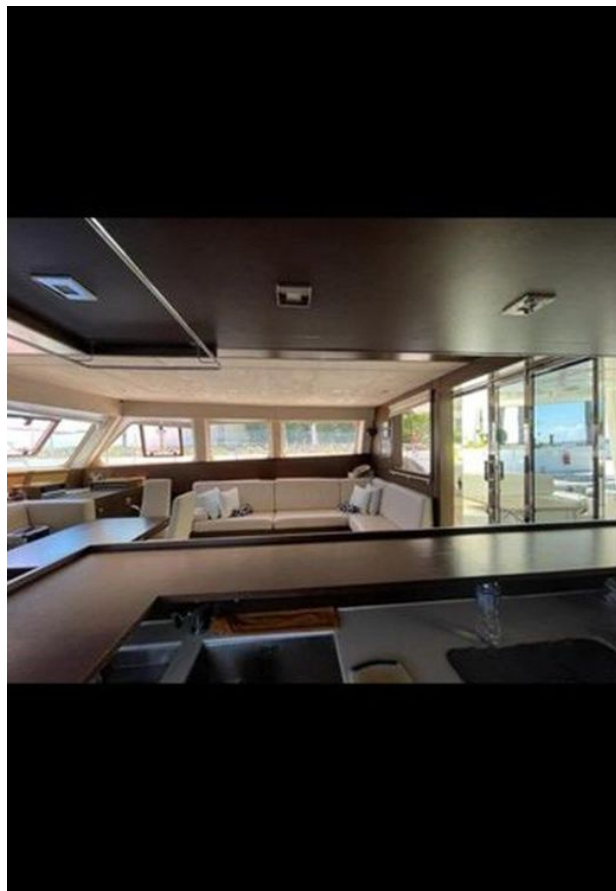
Fiberglass

Manufacturer:

Yanmar

GALLERY











CONTACTS

Shestakov Yacht Sales is a brokerage company specializing in the sale and service of yachts worldwide. The company offers services for buying and selling both new and used motor yachts, sailing vessels, and luxury superyachts. They also provide yacht registration, insurance, technical maintenance, crew selection, and charter organization services across the U.S., Canada, Latin America, the Caribbean, and the Bahamas.

The founder and lead broker of the company is Andrey Shestakov, a licensed and certified expert with extensive experience in marine engineering and shipbuilding.

The company has an extensive network of partnerships with major yacht manufacturers worldwide and provides services in multiple languages, including Russian, Ukrainian, Spanish, and English. The office is in Dania Beach, Florida, USA.

For more information and to view available yachts, you can visit the company's official website: <https://shestakovyachtsales.com>

Contact details

Phone: +1(954)274-4435

Email: andrey@shestakovyachtsales.com

Address



1380 Weeping Willow Way, Hollywood,
Florida 33019