



SHESTAKOV

Yacht Sales

86 YACHT – SUNSEEKER



Builder:

Sunseeker

Model:

86 Yacht

LOA:

86' 0" (26.32 m)

Min Draft:

6' 10" (2.09 m)

Beam:

21' 0" (6.41 m)

Max Draft:

6' 10" (2.09 m)

Cruise Speed:

23 kn / 26.47 mph

Max Speed:

30 kn / 34.52 mph

Gross Tonnage:

128 Pounds

Water Capacity:

369.84 Gallons

Fuel Capacity:

2905.89 Gallons

Sleeps:

8

If you would like to buy a yacht **86 YACHT – Sunseeker** or would like help, please call +1(954)274-4435 or visit shestakovyachtsales.com

TABLE OF CONTENTS

OVERVIEW	3
Selecting a 86 Yacht	3
Features of the Model	3
Technical Specifications	4
Pricing and Ordering	4
Questions and Answers	5
Owner Experience Review	5
Pros and Cons	6
Comparison with Other Models	7
SPECIFICATIONS	8
GALLERY	9
CONTACTS	14

OVERVIEW

Crafted by Sunseeker, the 86 Yacht is a refined expression of speed and onboard comfort—a motor yacht built on a fiberglass and plastic hull from Sunseeker. Shestakov Yacht Sales and broker Andrey Shestakov stand ready to assist with checking availability, detailing specifications, and guiding you through the brokerage experience.

Selecting a 86 Yacht

Opting for the 86 Yacht is sensible for owners who want brisk passage-making paired with generous living areas. Its typical cruise is 23 kn (26.47 mph) with a top end near 30 kn (34.52 mph), offering a balance of speed and refinement. The layout accommodates up to 8 guests with 4 heads for longer trips, while a separate crew module (1 cabin, 2 berths) supports professional operation.

As a motor yacht featuring a fiberglass and plastic hull, composite deck, and monohull form, the 86 Yacht exemplifies Sunseeker's emphasis on efficient strength-to-weight ratios and sea-keeping capabilities. Shestakov Yacht Sales, led by Andrey Shestakov, can advise on available build years and factory options to suit your intended use.

Features of the Model

- Performance profile: 23 kn cruising and 30 kn maximum speed
- Propulsion: twin MTU inboard diesel engines (2 x MTU)
- Dimensions: 86 ft LOA, 21 ft beam; draft approx. 6.857 ft
- Construction: fiberglass and plastic hull, composite deck; monohull configuration
- Living: sleeps 8 guests; 4 heads; crew area with 1 cabin and 2 berths

- Design pedigree: hull and interior by Sunseeker
- Endurance: fuel capacity 2,905.89 gal; fresh water 369.84 gal

Technical Specifications

- Builder: Sunseeker
- Model: 86 Yacht
- Type: motor yacht
- Hull material: fiberglass and plastic
- Deck material: Composite
- Hull configuration: Monohull
- LOA: 86 ft (26.32 m)
- Beam: 21 ft (6.41 m)
- Draft (min/max): 6.857 ft (2.09 m)
- Cruising speed: 23 kn (26.47 mph)
- Maximum speed: 30 kn (34.52 mph)
- Gross tonnage: 128
- Engines: 2 x MTU, Inboard, Diesel
- Accommodation: 8 sleeps; 4 heads
- Crew: 1 cabin; 2 beds
- Fuel capacity: 2,905.89 gal
- Water capacity: 369.84 gal
- Hull designer: Sunseeker
- Interior designer: Sunseeker

Pricing and Ordering

The purchase price of a Sunseeker 86 Yacht depends on year of build, outfitting level, and current market trends. For up-to-date listings, tailored price estimates, and a strategy for acquisition, reach out to Shestakov Yacht

Sales. Broker Andrey Shestakov will supply market comparisons, arrange inspections, and steer negotiations through to completion.

Questions and Answers

Q: What type of yacht is the Sunseeker 86 Yacht? A: It is a **motor yacht** constructed on a **fiberglass and plastic** hull and arranged as a **monohull** .

Q: What are the **cruising** and **maximum speeds** of the 86 Yacht? A: The listed **cruising speed** is 23 kn (26.47 mph) while the **maximum speed** reaches about 30 kn (34.52 mph).

Q: How many people can **sleep** onboard, and what about **crew** ? A: The yacht **sleeps 8** guests across the accommodation plan with **4 heads** , and provides **1 crew cabin** configured for **2 crew beds** .

Q: What are the principal **dimensions** and **draft** of the 86 Yacht? A: Overall length is **86 ft (26.32 m)** , beam is **21 ft (6.41 m)** , and draft is **6.857 ft (2.09 m)** .

Q: What are the **engines** and onboard **capacities** ? A: Propulsion is provided by **2 x MTU Inboard Diesel** engines. The yacht carries **2,905.89 gal** of fuel and **369.84 gal** of freshwater.

Owner Experience Review

Owners typically select the 86 Yacht for its flexibility: it serves private family cruising with 3–4 cabin layouts oriented to owners and guests, supports professionally crewed charters and day hires, and works well for owner-operated programs that keep a captain aboard full time. The expansive flybridge is consistently praised as a social focal point, complemented by oversized salon glazing and a side balcony that enhances the connection to the

sea. Reviewers often prefer satin wood finishes to high gloss for the interior. Several lower deck configurations are available; while many appreciate the spatial arrangements, some owners note that galley down versions can disrupt main deck entertaining circulation.

Underway, the 86 Yacht is reported to carry itself confidently in a stiff channel chop when run near 30 knots without subjecting guests to excess motion. Typical reported cruise figures are 23–24 knots with top speeds in the 27–30 knot range, and long range estimates of about 1,200–1,500 nm at lower displacement speeds are commonly cited. Numerous hulls are fitted with active stabilizers (options include CMC, Vector, or Seakeeper), and owners and brokers note significantly improved anchor comfort when zero speed stabilization is installed.

Maintenance and upkeep align with expectations for a yacht of this size. Walk throughs highlight useful wiring and plumbing schematics, and builder/broker documentation draws attention to accessible engine room hatches/doors and crew lobby entries. Listings often mention “open checkbook” programs that cover large expenses such as stabilizer overhauls, generator swaps, and routine MTU maintenance. There is no singular, widely reported systemic fault unique to the 86 Yacht, but owners point to typical cost centers—generators, electrical systems, stabilizers, and engines—with industry estimates commonly running around 5–10% of the yacht’s value annually. Individual costs, of course, depend on each hull’s service history and specification from Sunseeker.

Pros and Cons

- Big, social flybridge and generous entertaining spaces with large windows and a side balcony.
- Confident performance, with a reported 23–24 knot cruise, near 30 knot

top, and composed running in chop.

- When fitted, active stabilizers deliver strong zero speed roll reduction.
- Side deck safety criticized by owners, with minimal handholds, a low rail forward, and a styling bulge that pushes you outboard.
- Galley down layouts can interrupt main deck entertaining flow.
- High annual running and refit costs typical of the size class, including generators, stabilizers, and MTU service.

Comparison with Other Models

Model	LOA	Beam	Draft	Speed (Cruising/Max)	Gross Tonnage
86 Yacht	86' 0" (26.32 m)	21' 0" (6.41 m)	6' 10" (2.09 m)	23 kn / 30 kn	128
Superhawk 48	48' 0" (14.70 m)	10' 0" (3.25 m)	2' 11" (0.90 m)	30 kn / 35 kn	2860000
Predator 82	79' 0" (24.15 m)	19' 0" (5.79 m)	2' 12" (0.91 m)	33 kn / 44 kn	83
Superhawk 55	56' 0" (17.14 m)	14' 0" (4.45 m)	12' 2" (3.70 m) – 13' 9" (4.20 m)	28 kn / 40 kn	35.5
Portofino 46	46' 0" (14.02 m)				
Manhattan 65	69' 0" (21.15 m)	16' 0" (4.88 m)	5' 4" (1.62 m)	20 kn / 31 kn	
Predator 95	95' 0" (28.96 m)	20' 0" (6.34 m)	3' 11" (1.20 m)	18 kn / 33 kn	
121	124' 0" (37.99 m)	26' 0" (8.09 m)	7' 10" (2.38 m) – 9' 5" (2.88 m)	18 kn / 26 kn	331
Predator	75' 0" (22.86 m)	17' 0" (5.31 m)	14' 9" (4.50 m)		
88	88' 0" (26.82 m)	21' 0" (6.40 m)	21' 1" (6.42 m)	22 kn / 26 kn	122

SPECIFICATIONS

LOA:

86' 0" (26.32 m)

Beam:

21' 0" (6.41 m)

Cruise Speed:

23 kn / 26.47 mph

Gross Tonnage:

128 Pounds

Fuel Capacity:

2905.89 Gallons

Sleeps:

8

Crew Cabin:

1

Hull Material:

Fiberglass and Plastic Yachts

Hull Configuration:

Monohull

Interior Designer:

Sunseeker

Engines:

2

Engine Type:

Inboard

Min Draft:

6' 10" (2.09 m)

Max Draft:

6' 10" (2.09 m)

Max Speed:

30 kn / 34.52 mph

Water Capacity:

369.84 Gallons

Total Heads:

4

Crew Berths:

2

Deck Material:

Composite

Hull Designer:

Sunseeker

Manufacturer:

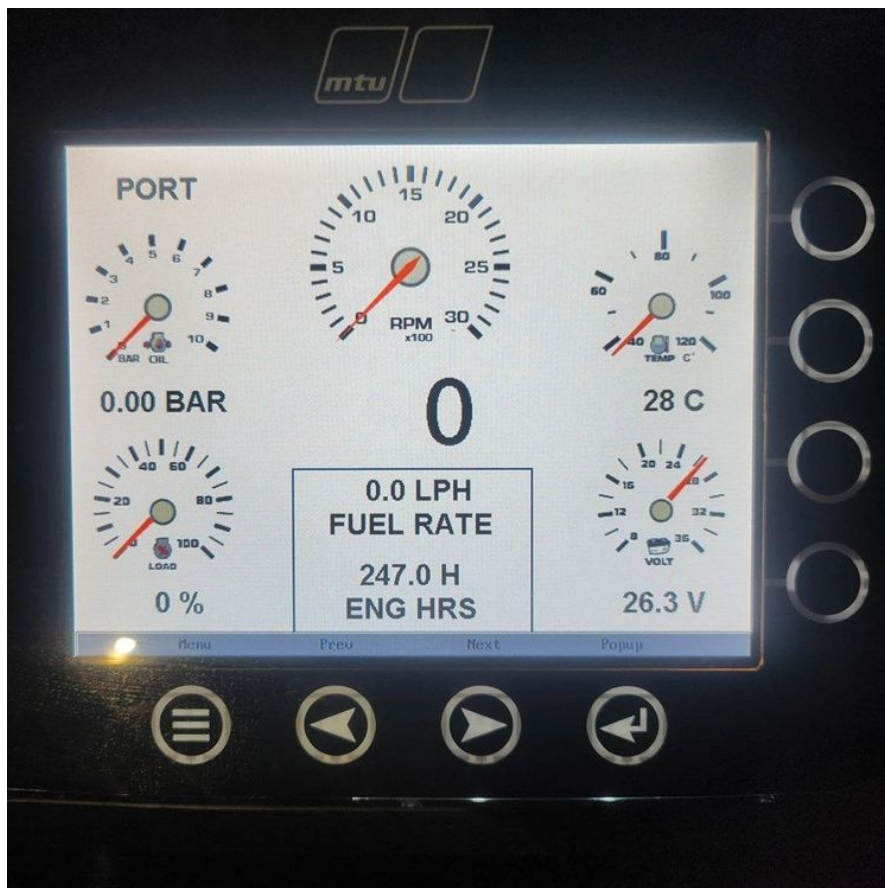
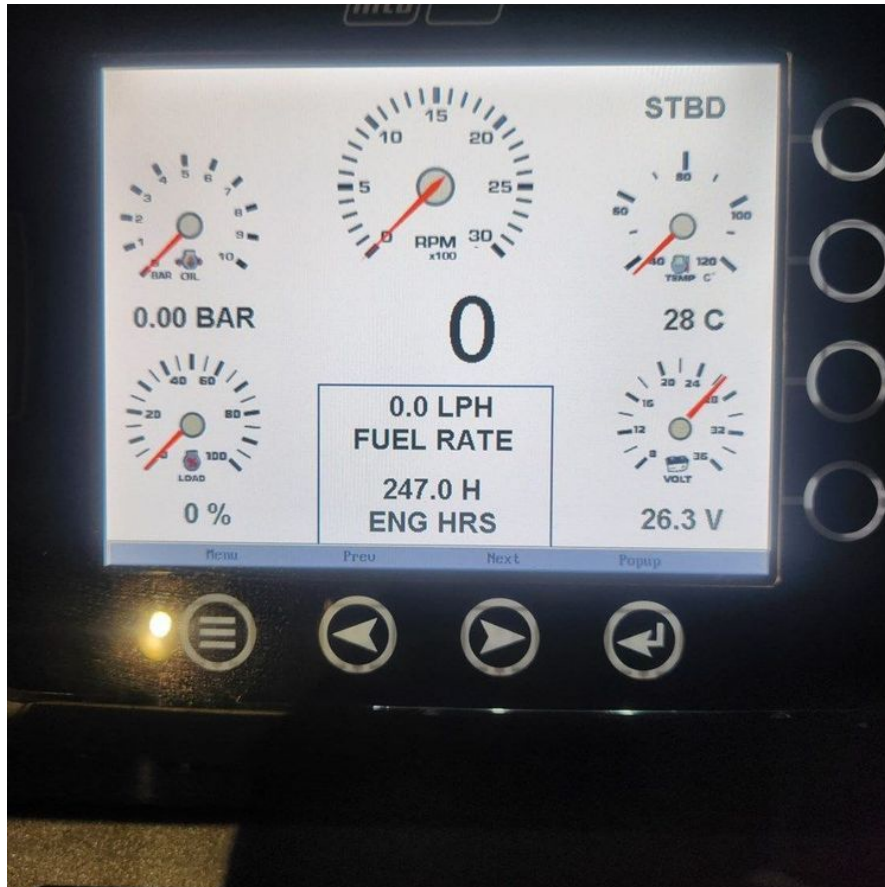
MTU

Fuel Type:

Diesel

GALLERY











CONTACTS

Shestakov Yacht Sales is a brokerage company specializing in the sale and service of yachts worldwide. The company offers services for buying and selling both new and used motor yachts, sailing vessels, and luxury superyachts. They also provide yacht registration, insurance, technical maintenance, crew selection, and charter organization services across the U.S., Canada, Latin America, the Caribbean, and the Bahamas.

The founder and lead broker of the company is Andrey Shestakov, a licensed and certified expert with extensive experience in marine engineering and shipbuilding.

The company has an extensive network of partnerships with major yacht manufacturers worldwide and provides services in multiple languages, including Russian, Ukrainian, Spanish, and English. The office is in Dania Beach, Florida, USA.

For more information and to view available yachts, you can visit the company's official website: <https://shestakovyachtsales.com>

Contact details

Phone: +1(954)274-4435

Email: andrey@shestakovyachtsales.com

Address



1380 Weeping Willow Way, Hollywood,
Florida 33019