



SHESTAKOV

Yacht Sales

31 - TARTAN



Builder:

TARTAN

Model:

31

LOA:

31' 0" (9.45 m)

Max Draft:

14' 3" (4.33 m)

Water Capacity:

40 Gallons

Fuel Capacity:

18 Gallons

Total Heads:

1

Hull Material:

Fiberglass and Plastic Yachts

Deck Material:

Fiberglass

Engines:

1

Manufacturer:

Universal

Engine Type:

Inboard

If you would like to buy a yacht **31 - TARTAN** or would like help, please call +1(954)274-4435 or visit shestakovyachtsales.com

TABLE OF CONTENTS

| | |
|---|-----------|
| OVERVIEW | 3 |
| Selecting a 31 | 3 |
| Features of the Model | 3 |
| Technical Specifications | 4 |
| Pricing and Ordering | 4 |
| Questions and Answers | 4 |
| Owner Experience Review | 5 |
| Pros and Cons | 6 |
| Comparison with Other Models | 6 |
| SPECIFICATIONS | 7 |
| GALLERY | 8 |
| CONTACTS | 13 |

OVERVIEW

The TARTAN 31 is a compact sailing yacht built on a durable fiberglass and plastic hull, engineered with straightforward systems to simplify ownership and cruising. Offered by Andrey Shestakov of Shestakov Yacht Sales, the design combines a Universal inboard diesel auxiliary with practical tankage and a low-maintenance fiberglass deck.

Selecting a 31

Opt for the TARTAN 31 when you want a true 31-foot sailing platform that's easy to manage. Its single Universal inboard diesel, one head, and well-proportioned fuel and water capacities make it ideal for owners who prioritize simplicity, dependable systems, and straightforward handling on a resilient fiberglass and plastic hull.

Features of the Model

- Power and propulsion: one Universal inboard diesel provides reliable auxiliary power.
- Structure: reinforced fiberglass and plastic hull paired with a fiberglass deck to reduce maintenance demands.
- Cruising practicality: a single head and practical fuel and water tanks suited to weekend trips or deliberate passage planning.
- Manageable dimensions: 31 ft LOA gives confident dock handling and easy marina maneuvering.

Technical Specifications

- LOA: 31 ft (9.45 m)
- Max draft: 14.217 ft (4.3333 m)
- Engine count: 1
- Engine manufacturer: Universal
- Engine type: Inboard
- Engine fuel: Diesel
- Hull material: fiberglass and plastic
- Deck material: Fiberglass
- Heads: 1
- Water capacity: 40 gal
- Fuel capacity: 18 gal

Pricing and Ordering

For up-to-date pricing, availability, and specific listings for the TARTAN 31, contact Andrey Shestakov at Shestakov Yacht Sales. We provide market analysis, negotiation guidance, sea trials, survey coordination, and closing logistics to make your purchase seamless from first viewing through survey and delivery.

Questions and Answers

Q: Is the TARTAN 31 a powerboat or a sailboat? A: It is a sailing yacht built on a tough fiberglass and plastic hull and fitted with an auxiliary inboard diesel **engine** .

Q: What are the key **dimensions** of the boat? A: LOA measures 31 ft (9.45 m) and maximum **draft** is 14.217 ft (4.3333 m).

Q: Which **engine** powers the boat? A: The boat is powered by a single Universal **inboard diesel** engine providing auxiliary propulsion.

Q: What are the **tank** capacities? A: The approximate **water** capacity is 40 gal and the **fuel** capacity is 18 gal.

Q: How do I start the **ordering** process? A: Contact Andrey Shestakov and the Shestakov Yacht Sales team to review listings, schedule a **survey** , and plan the next steps for acquiring a TARTAN 31.

Owner Experience Review

Owners report using the 31 from TARTAN for a wide range of activities: family cruising and weekend outings on lakes and coastal waters, short handed coastal daysails, and occasional club racing where PHRF ratings in the neighborhood of 141–153 keep the boat competitive.

On the water the model is frequently described as forgiving, generally sailing at about 10–12 degrees of heel while maintaining good balance upwind. Owners praise its windward performance, note reduced drive on a broad reach when seas build, and report hull-speed capability near 6.8 knots—one owner recorded 6.83 knots on a beam reach in 12 knots of breeze. With suitable reefing, crews say the boat remains controllable and comfortable even in 35–40 knot conditions.

Belowdecks the finish is considered above average for the period, featuring teak joinerwork, a U-shaped galley, a functional nav station, and roughly 6-inch settee cushions; the forward stateroom is viewed as comfortable. The T-shaped cockpit seats four adults well, although the cabin-top mainsheet is positioned out of reach for the helmsman. Maintenance issues cited by owners include recurring mast/step leaks that can harm the triangular section of sole below and, in some cases, cause persistent bilge pumping; one owner

reported an unsecured tie rod blamed on dealer oversight. On the positive side, engine access is excellent—the companionway steps swing aside to expose all sides of the Yanmar, the stuffing box, and the aft end of the engine.

Pros and Cons

- Versatile for family cruising, coastal daysailing, and club racing, with owners reporting competitive PHRF ratings around 141–153.
- Very forgiving and well balanced to windward, capable of roughly 6.8 knots and able to remain manageable under double reef in 35–40 knots.
- Interior finish is above average for its era, with teak joinerwork, a U-shaped galley and a practical nav station, plus easy engine access via swing-aside companionway steps.
- Frequent reports of mast/step leaks, which can lead to water damage to the triangular sole section and sometimes persistent bilge pumping.
- Cabin-top mainsheet is located out of reach for the helmsman.
- Less effective on a broad reach when the seas are building.

Comparison with Other Models

| Model | LOA | Beam | Draft | Speed (Cruising/... | Gross... |
|-----------|------------------|-----------------|-----------------------------------|---------------------|----------|
| 37 | 37' 0" (11.35 m) | 11' 0" (3.58 m) | 15' 4" (4.67 m) | 6.5 kn / 7.2 kn | 15 |
| Tartan 37 | 37' 0" (11.38 m) | 11' 0" (3.58 m) | 14' 9" (4.50 m) – 25' 5" (7.75 m) | | |
| 30 | 30' 0" (9.12 m) | 10' 0" (3.05 m) | 16' 2" (4.92 m) | | |
| 4000 | 40' 0" (12.40 m) | 12' 0" (3.66 m) | 19' 5" (5.92 m) | | |
| 31 | 31' 0" (9.45 m) | | 14' 3" (4.33 m) | | |
| 3500 | 35' 0" (10.74 m) | 11' 0" (3.58 m) | 21' 4" (6.50 m) | | |

SPECIFICATIONS

LOA:

31' 0" (9.45 m)

Water Capacity:

40 Gallons

Total Heads:

1

Hull Material:

Fiberglass and Plastic Yachts

Engines:

1

Engine Type:

Inboard

Max Draft:

14' 3" (4.33 m)

Fuel Capacity:

18 Gallons

Deck Material:

Fiberglass

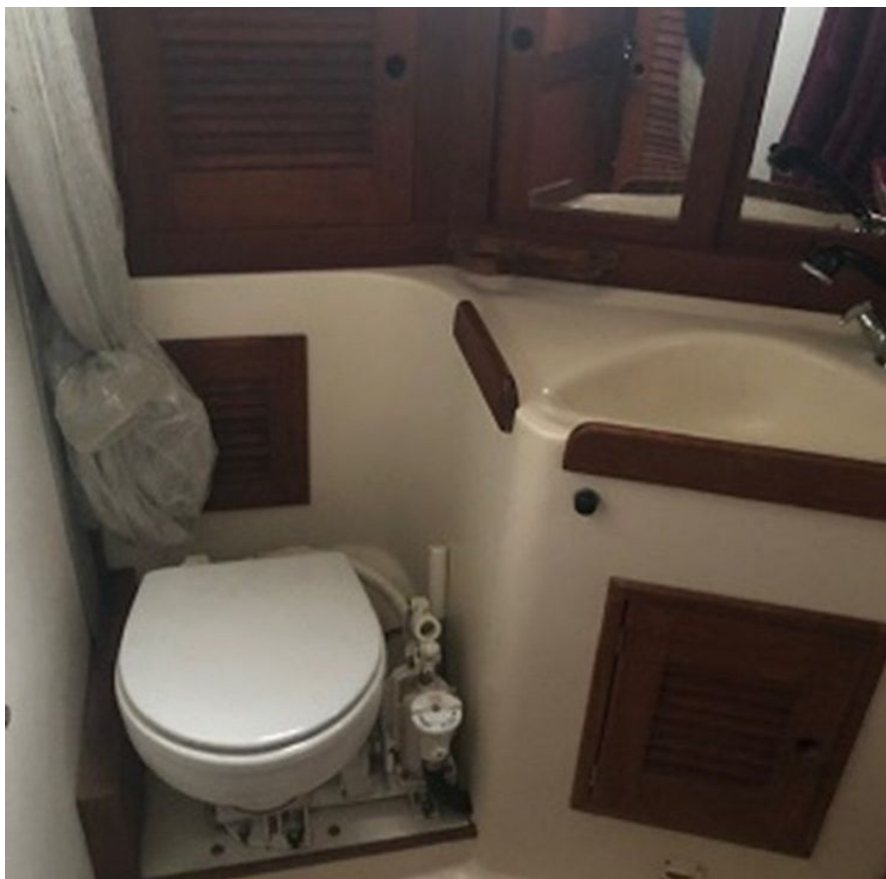
Manufacturer:

Universal

Fuel Type:

Diesel

GALLERY











CONTACTS

Shestakov Yacht Sales is a brokerage company specializing in the sale and service of yachts worldwide. The company offers services for buying and selling both new and used motor yachts, sailing vessels, and luxury superyachts. They also provide yacht registration, insurance, technical maintenance, crew selection, and charter organization services across the U.S., Canada, Latin America, the Caribbean, and the Bahamas.

The founder and lead broker of the company is Andrey Shestakov, a licensed and certified expert with extensive experience in marine engineering and shipbuilding.

The company has an extensive network of partnerships with major yacht manufacturers worldwide and provides services in multiple languages, including Russian, Ukrainian, Spanish, and English. The office is in Dania Beach, Florida, USA.

For more information and to view available yachts, you can visit the company's official website: <https://shestakovyachtsales.com>

Contact details

Phone: +1(954)274-4435

Email: andrey@shestakovyachtsales.com

Address



1380 Weeping Willow Way, Hollywood,
Florida 33019