



SHESTAKOV

Yacht Sales

44 COUPE - TIARA



Builder:

Tiara

Model:

44 Coupe

LOA:

44' 0" (13.69 m)

Min Draft:

12' 7" (3.83 m)

Beam:

15' 0" (4.55 m)

Max Draft:

12' 7" (3.83 m)

Cruise Speed:

30 kn / 30 mph

Max Speed:

33 kn / 33 mph

Gross Tonnage:

15 Pounds

Water Capacity:

118 Gallons

Fuel Capacity:

350 Gallons

Sleeps:

2

If you would like to buy a yacht **44 COUPE - Tiara** or would like help, please call +1(954)274-4435 or visit shestakovyachtsales.com

TABLE OF CONTENTS

OVERVIEW	3
Selecting a 44 Coupe	3
Features of the Model	3
Technical Specifications	4
Pricing and Ordering	5
Questions and Answers	5
Owner Experience Review	6
Pros and Cons	7
Comparison with Other Models	7
SPECIFICATIONS	9
GALLERY	10
CONTACTS	15

OVERVIEW

The 44 Coupe from Tiara is a modern motor yacht built on a sturdy fiberglass foundation. It combines assured on-water performance with practical, livable proportions. Represented by Andrey Shestakov and Shestakov Yacht Sales, this model is aimed at owners who put a premium on speed, handling, and uncomplicated onboard living.

Selecting a 44 Coupe

When your brief calls for a 44-foot coupe capable of a sustained 30-knot cruise, the 44 Coupe makes a compelling case with its twin-diesel reliability and a finely tuned running surface. As a motor yacht sitting on a fiberglass hull, it appeals to owners focused on low-maintenance upkeep, predictable sea manners, and efficient coastal passages. For personalized advice, detailed specifications, and current availability, contact Andrey Shestakov at Shestakov Yacht Sales—your specialist broker for Tiara vessels.

Features of the Model

- A profile tuned for performance, delivering a comfortable 30-knot cruise and a 33-knot top speed.
- Twin Volvo Penta diesel engines provide an efficient and dependable propulsion package.
- Modified V-Hull geometry for steady, sea-kindly handling in a variety of conditions.
- Practical overall dimensions for marina life and docking: 44 ft LOA with a 15 ft beam.
- Construction prioritizes durability with a fiberglass structure and fiberglass decks.

- Usable onboard accommodations configured for utility and comfort: accommodation count 4, sleeps 2, heads 2.
- Design continuity from Tiara Yachts, harmonizing hull form and interior layout.
- Capacities and systems balanced to support weekend cruising and longer excursions.

Technical Specifications

- Length overall (LOA): 44 ft (13.69 m)
- Beam: 15 ft (4.55 m)
- Draft (min): 12.566 ft (3.83 m)
- Draft (max): 12.566 ft (3.83 m)
- Speed (cruise): 30 kn (30 mph)
- Speed (max): 33 kn (33 mph)
- Gross tonnage: 15
- Engines: 2 x Volvo Penta
- Fuel type: Diesel
- Hull configuration: Modified V-Hull
- Hull material: fiberglass and plastic
- Deck material: Fiberglass
- Hull designer: Tiara Yachts
- Interior designer: Tiara Yachts
- Accommodation count: 4
- Sleeps: 2
- Heads: 2
- Fuel capacity: 350 gal
- Water capacity: 118 gal
- Classification: motor yacht

Pricing and Ordering

Costs and delivery schedules depend on current market conditions and available build slots. To obtain up-to-date pricing, check build availability, or schedule a viewing or survey of the 44 Coupe, reach out to Andrey Shestakov at Shestakov Yacht Sales. He will manage specification details, paperwork, and negotiations to help expedite your purchase of a Tiara motor yacht.

Questions and Answers

Q: What type of yacht is the 44 Coupe? A: It is a motor yacht constructed on a solid fiberglass platform, engineered for confident coastal cruising.

Q: What are the key performance figures? A: The 44 Coupe achieves a **30 kn** cruising speed and a **33 kn** top end (also listed as **30 mph** and **33 mph**, respectively).

Q: What powers the yacht? A: Propulsion comes from twin **Volvo Penta diesel** engines, chosen for reliable and efficient cruising.

Q: How is the hull configured and built? A: The yacht rides on a **Modified V-Hull** for predictable handling and is built with fiberglass and plastic construction and **fiberglass** decks for long-term durability.

Q: What are the living arrangements and capacities? A: The layout lists **accommodation count: 4**, **sleeps: 2**, and **heads: 2**, supported by **350 gal** fuel and **118 gal** water tanks to extend cruising ranges. Contact Andrey Shestakov at Shestakov Yacht Sales for configuration advice and optional layouts.

Owner Experience Review

Owners often choose the 44 Coupe from Tiara for family-friendly cruising and lively day boating. The two-cabin, owner-focused arrangement makes overnighting comfortable, while the aft galley and expansive sliding glass doors in the salon maintain an open social environment; reviewers have even noted it "bringing the sociability up a notch." A bright, panoramic salon beneath a hard-top with sunroof, together with robust hardware such as heavy-duty locker hinges, reinforces the boat's solid construction.

On the water, test reports frequently compare its behavior to a runabout at around 25 mph, with easy cruise speeds in the 25–30 mph band and top-end runs near 30–35 mph. With an 18° transom deadrise, both owners and testers describe a confident, controlled ride in chop and short seas—one sea trial observed it "knocked down waves with condescension." IPS installations with joystick control are consistently praised for their accurate low-speed handling and simplified docking.

Owner feedback also points to a few compromises inherent to the coupe form. Engine-room access is narrower than on the Open versions—some owners miss the broader access of the Open, though many find the 44 Coupe engine hatch adequate for most maintenance. A small number of owners have reported battery-related problems on certain boats, including cracked batteries and a 24V bank that required re-wiring by a technician. It's common to mount a hard-bottom RIB on the hydraulic swim platform; owners discuss the resulting stern weight along with prop and fuel tradeoffs in forums. Tiara generally outfits props to meet rated WOT rpm, so modest additions rarely demand immediate re-propping.

Pros and Cons

- The aft galley and wide sliding salon doors foster an exceptionally sociable flow between cockpit and salon, ideal for entertaining and day trips.
- An 18° transom deadrise paired with a proven hull design produces a confident ride in chop and short seas, reportedly "knocking down waves with condescension."
- IPS joystick control delivers precise low-speed maneuverability and straightforward docking.
- Engine-room access is more restricted than on Open models, which can make some servicing tasks less convenient.
- A few owners have experienced battery issues on certain boats, including cracked batteries and a 24V bank that was re-wired.
- Installing a RIB on the hydraulic swim platform increases stern weight and introduces prop and fuel tradeoffs to consider, although modest loads seldom necessitate immediate re-propping.

Comparison with Other Models

Model	LOA	Beam	Draft	Speed (Cruising/...	Gross...
44 Coupe	44' 0" (13.69 m)	15' 0" (4.55 m)	12' 7" (3.83 m)	30 kn / 33 kn	15
4200 Open	42' 0" (12.80 m)	14' 0" (4.55 m)	13' 8" (4.17 m)		
C44 Coupe	44' 0" (13.41 m)	12' 0" (3.86 m)	12' 4" (3.75 m)		
F44 Flybridge	45' 0" (13.84 m)	21' 0" (6.48 m)			
43 LE	43' 0" (13.26 m)	13' 0" (3.96 m)	7' 5" (2.25 m) – 11' 3" (3.42 m)		
4100 Open	41' 0" (12.50 m)				
C39 Coupe	41' 0" (12.50 m)	13' 0" (4.04 m)	10' 11" (3.33 m)	30 kn / 40 kn	
4300 Open	43' 0" (13.13 m)	15' 0" (4.67 m)	13' 8" (4.17 m)		
3500 Express	35' 0" (10.67 m)				

Coupe	49' 0" (14.94 m)	15' 0" (4.67 m)	13' 8" (4.17 m)	26 kn / 31 kn	
-------	------------------	-----------------	-----------------	---------------	--

SPECIFICATIONS

LOA:

44' 0" (13.69 m)

Beam:

15' 0" (4.55 m)

Cruise Speed:

30 kn / 30 mph

Gross Tonnage:

15 Pounds

Fuel Capacity:

350 Gallons

Sleeps:

2

Hull Material:

Fiberglass and Plastic Yachts

Hull Configuration:

Modified V-Hull

Interior Designer:

Tiara Yachts

Engines:

2

Fuel Type:

Diesel

Min Draft:

12' 7" (3.83 m)

Max Draft:

12' 7" (3.83 m)

Max Speed:

33 kn / 33 mph

Water Capacity:

118 Gallons

Total Heads:

2

Deck Material:

Fiberglass

Hull Designer:

Tiara Yachts

Manufacturer:

Volvo Penta

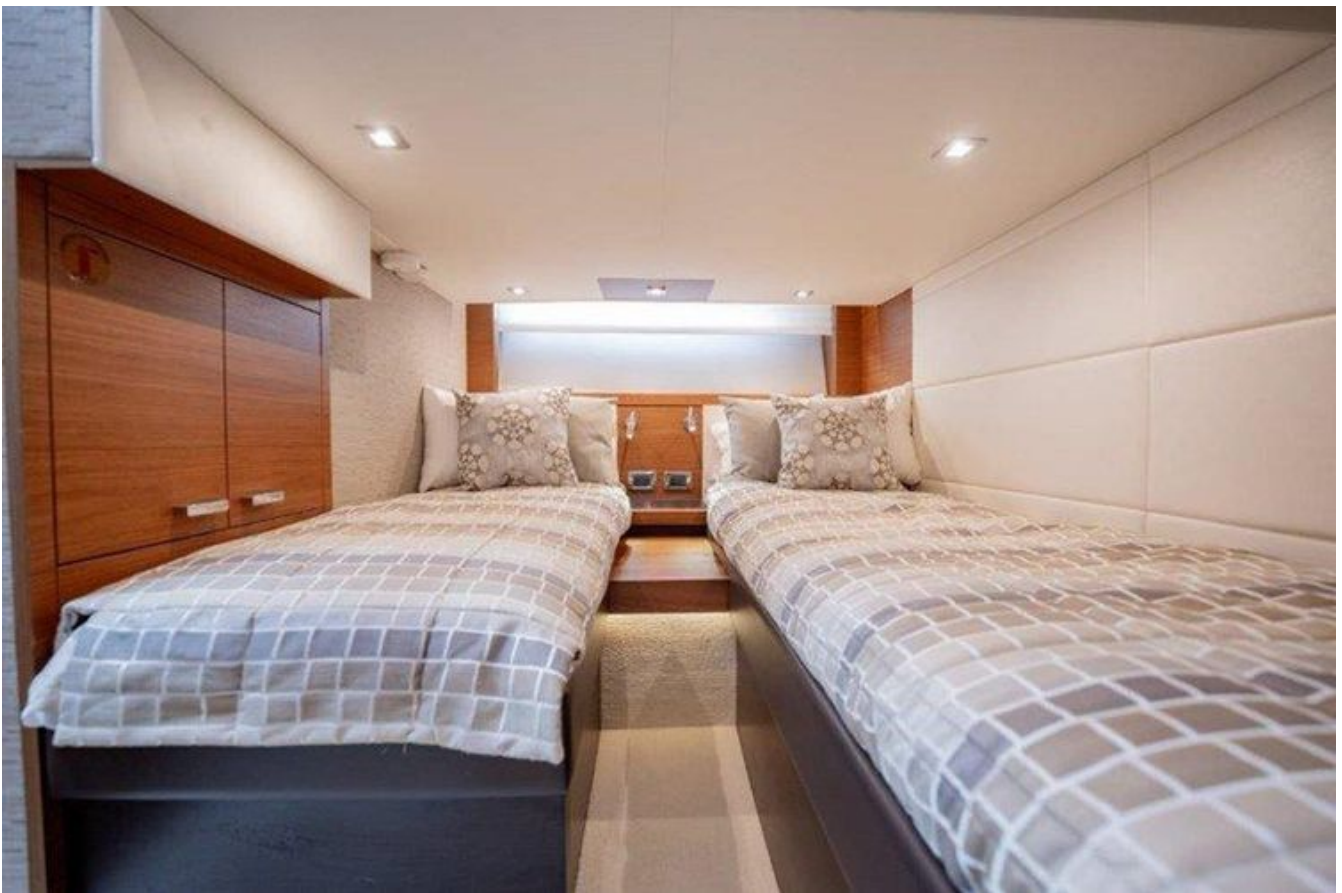
GALLERY











CONTACTS

Shestakov Yacht Sales is a brokerage company specializing in the sale and service of yachts worldwide. The company offers services for buying and selling both new and used motor yachts, sailing vessels, and luxury superyachts. They also provide yacht registration, insurance, technical maintenance, crew selection, and charter organization services across the U.S., Canada, Latin America, the Caribbean, and the Bahamas.

The founder and lead broker of the company is Andrey Shestakov, a licensed and certified expert with extensive experience in marine engineering and shipbuilding.

The company has an extensive network of partnerships with major yacht manufacturers worldwide and provides services in multiple languages, including Russian, Ukrainian, Spanish, and English. The office is in Dania Beach, Florida, USA.

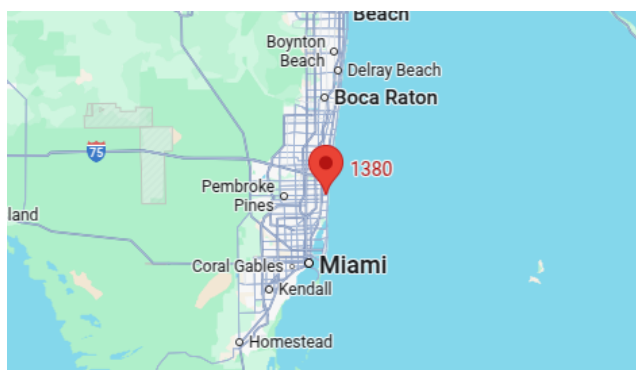
For more information and to view available yachts, you can visit the company's official website: <https://shestakovyachtsales.com>

Contact details

Phone: +1(954)274-4435

Email: andrey@shestakovyachtsales.com

Address



1380 Weeping Willow Way, Hollywood,
Florida 33019