



SHESTAKOV

Yacht Sales

## EXPRESS CRUISER – TOPAZ



**Builder:**

TOPAZ

**Model:**

Express Cruiser

**LOA:**

32' 0" (9.75 m)

**Beam:**

12' 0" (3.68 m)

**Max Draft:**

9' 10" (3 m)

**Water Capacity:**

40 Gallons

**Fuel Capacity:**

380 Gallons

**Total Heads:**

1

**Hull Material:**

Fiberglass and Plastic Yachts

**Deck Material:**

Fiberglass

**Hull Configuration:**

Deep Vee

**Engines:**

2

If you would like to buy a yacht **EXPRESS CRUISER – TOPAZ** or would like help, please call +1(954)274-4435 or visit [shestakovyachtsales.com](http://shestakovyachtsales.com)

---

# TABLE OF CONTENTS

---

<b>OVERVIEW .....</b>	<b>3</b>
<b>Selecting a Express Cruiser .....</b>	<b>3</b>
<b>Features of the Model .....</b>	<b>3</b>
<b>Technical Specifications .....</b>	<b>4</b>
<b>Pricing and Ordering .....</b>	<b>4</b>
<b>Questions and Answers .....</b>	<b>4</b>
<b>Owner Experience Review .....</b>	<b>5</b>
<b>Pros and Cons .....</b>	<b>6</b>
<b>Comparison with Other Models .....</b>	<b>6</b>
<b>SPECIFICATIONS .....</b>	<b>7</b>
<b>GALLERY .....</b>	<b>8</b>
<b>CONTACTS .....</b>	<b>13</b>

---

# OVERVIEW

---

The TOPAZ Express Cruiser is a compact, capable platform for coastal adventures—an agile motor yacht with the comfort and practicality of a true cruiser. Its fiberglass construction paired with a Deep Vee hull emphasizes efficient handling and confident ride. Work with Shestakov Yacht Sales and broker Andrey Shestakov to evaluate availability and options.

---

## Selecting a Express Cruiser

---

Opting for the Express Cruiser signals a preference for simple operation, reliable twin-diesel propulsion, and a hull shape designed for steady, assured performance. If you need a nimble coastal craft with a 32 ft LOA that still feels like a serious offshore boat, this model is a strong contender. Shestakov Yacht Sales, led by Andrey Shestakov, can assist you in comparing inventory, scheduling inspections, and organizing surveys and sea trials.

---

## Features of the Model

---

- Twin Caterpillar inboard diesels provide balanced thrust and redundancy for extended cruising.
- The Deep Vee hull delivers composed tracking and a comfortable ride across varying sea conditions.
- An efficient express layout centered around a single head makes this model well suited to weekend cruising.
- Robust fiberglass construction and a fiberglass deck offer durability and straightforward maintenance.
- The profile fits neatly within the motor yacht class while retaining the practical attributes of a cruiser.

---

## Technical Specifications

---

- LOA: 32 ft (9.75 m)
- Beam: 12 ft (3.68 m)
- Max Draft: 9.843 ft (3 m)
- Engines: 2 x Caterpillar, Inboard, Diesel
- Hull Configuration: Deep Vee
- Hull Material: fiberglass and plastic
- Deck Material: Fiberglass
- Heads: 1
- Water Capacity: 40 gal
- Fuel Capacity: 380 gal

---

## Pricing and Ordering

---

Availability and asking prices for the TOPAZ Express Cruiser depend on the boat's condition, current inventory, and its location. Contact Shestakov Yacht Sales to review active listings, recent sales comparables, and negotiating approaches. Andrey Shestakov can arrange surveys, handle paperwork, and manage the closing process to keep the purchase on track from initial inquiry through delivery.

---

## Questions and Answers

---

Q: What type of yacht is the TOPAZ Express Cruiser? A: It's a versatile motor yacht in the cruiser category constructed with durable fiberglass construction.

Q: What powers this model? A: The boat is equipped with **twin Caterpillar inboard diesel** engines for dependable performance and efficient cruising.

Q: What are the key dimensions? A: The **LOA is 32 ft (9.75 m)** , the beam

measures **12 ft (3.68 m)** , and the maximum draft is **9.843 ft (3 m)** , combining a stable platform with Deep Vee handling characteristics.

Q: What onboard utilities are specified? A: The vessel is fitted with **1 head** , carries **40 gal** of water, and holds **380 gal** of fuel—practical capacities for day sails and short cruises.

Q: Who can help me purchase this boat? A: Contact **Andrey Shestakov** at **Shestakov Yacht Sales** for current availability, pricing advice, and comprehensive brokerage services.

## Owner Experience Review

---

Owners often describe the Express Cruiser from TOPAZ as a sportfishing-focused design that doubles effectively as a family cruiser. Its cockpit and offshore-oriented deck plan reflect tournament-capable roots, while the interior accommodations support comfortable, upscale cruising for weekends or longer.

On the water, feedback highlights a "fishy" but comfortable ride, with dealers noting impressive low-speed steadiness and respectable speed potential. Brokerage listings commonly reference dependable bluewater capability; as an example from the market, a 37-foot example reported cruising quickly at about 18 knots near WOT with approximately 2,810 rpm.

Listing descriptions for similar boats mention a functional galley, sleeping berths, and a head, with traditional layouts sometimes including a separate shower stall and a U-shaped dinette that converts to additional sleeping space—delivering "a lot of boat" for a new owner. Maintenance guidance from owners is candid: obtain a professional survey, monitor raw-water systems such as aftercoolers and heat exchangers, and note that certain Volvo-equipped setups may experience slower parts lead times. Positive

service records are noted in examples like a 2006 listing showing a documented 2,000-hour maintenance history.

## Pros and Cons

- Authentic sportfishing lineage with a cockpit and offshore arrangement proven in tournament settings.
- Confident offshore behavior, strong low-speed stability, and the ability to produce a satisfying turn of speed.
- Suited to day trips and short cruises, with listings typically showing a galley, berths, and a head; classic layouts often add a separate shower and a convertible dinette.
- Some owners warn that Volvo engine components can have extended lead times for parts, depending on the specific installation.
- Raw-water elements like aftercoolers and heat exchangers need careful inspection and regular servicing.
- Can present a steep learning curve and maintenance commitment for first-time boat buyers, feeling like "a lot of boat" to manage.

## Comparison with Other Models

Model	LOA	Beam	Draft	Speed (Cruising/Max)	Gross Tonnage
Express	28' 0" (8.53 m)	10' 0" (3.12 m)	8' 2" (2.50 m)	24 kn / 29 kn	
29	29' 0" (8.84 m)	10' 0" (3.12 m)	7' 11" (2.42 m)		
Express Cruiser	32' 0" (9.75 m)	12' 0" (3.68 m)	9' 10" (3 m)		

# SPECIFICATIONS

---

**LOA:**

32' 0" (9.75 m)

**Max Draft:**

9' 10" (3 m)

**Water Capacity:**

40 Gallons

**Total Heads:**

1

**Hull Material:**

Fiberglass and Plastic Yachts

**Hull Configuration:**

Deep Vee

**Engines:**

2

**Engine Type:**

Inboard

**Beam:**

12' 0" (3.68 m)

**Fuel Capacity:**

380 Gallons

**Deck Material:**

Fiberglass

**Manufacturer:**

Caterpillar

**Fuel Type:**

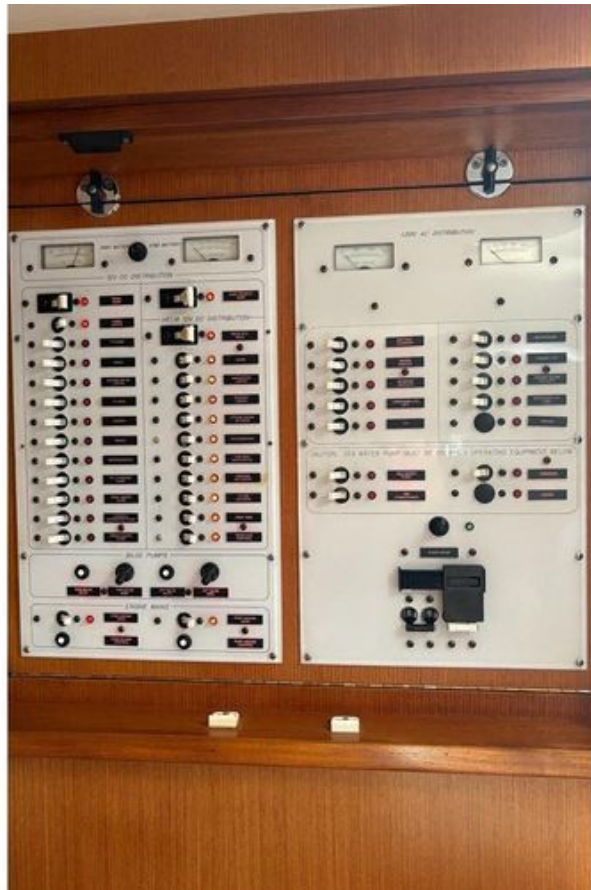
Diesel

# GALLERY











# CONTACTS

---

Shestakov Yacht Sales is a brokerage company specializing in the sale and service of yachts worldwide. The company offers services for buying and selling both new and used motor yachts, sailing vessels, and luxury superyachts. They also provide yacht registration, insurance, technical maintenance, crew selection, and charter organization services across the U.S., Canada, Latin America, the Caribbean, and the Bahamas.

The founder and lead broker of the company is Andrey Shestakov, a licensed and certified expert with extensive experience in marine engineering and shipbuilding.

The company has an extensive network of partnerships with major yacht manufacturers worldwide and provides services in multiple languages, including Russian, Ukrainian, Spanish, and English. The office is in Dania Beach, Florida, USA.

For more information and to view available yachts, you can visit the company's official website: <https://shestakovyachtsales.com>

## Contact details

---

**Phone:** +1(954)274-4435

**Email:** [andrey@shestakovyachtsales.com](mailto:andrey@shestakovyachtsales.com)

## Address

---



1380 Weeping Willow Way, Hollywood,  
Florida 33019