



SHESTAKOV

Yacht Sales

58' HOUSEBOAT - TRUMPY



Builder:

TRUMPY

Model:

58' Houseboat

LOA:

58' 0" (17.68 m)

Min Draft:

14' 6" (4.42 m)

Beam:

16' 0" (5 m)

Max Draft:

14' 6" (4.42 m)

Cruise Speed:

8 kn / 9.21 mph

Max Speed:

10 kn / 11.51 mph

Water Capacity:

389 Gallons

Fuel Capacity:

400 Gallons

Total Heads:

3

Hull Material:

Fiberglass and Plastic Yachts

If you would like to buy a yacht **58' HOUSEBOAT - TRUMPY** or would like help, please call +1(954)274-4435 or visit shestakovyachtsales.com

TABLE OF CONTENTS

OVERVIEW 3

- Selecting a 58' Houseboat 3
- Features of the Model 3
- Technical Specifications 4
- Pricing and Ordering 4
- Questions and Answers 4
- Owner Experience Review 5
- Pros and Cons 6
- Comparison with Other Models 6

SPECIFICATIONS 8

GALLERY 9

CONTACTS 14

OVERVIEW

The 58' Houseboat from TRUMPY is a motor yacht conceived for unhurried cruising and extended liveaboard comfort. Built with a fiberglass and plastic hull and fitted with a composite deck, it delivers a durable, low maintenance platform for time on the water. Represented by Andrey Shestakov and the team at Shestakov Yacht Sales.

Selecting a 58' Houseboat

Opt for this model if you prioritize a steady, economical voyage profile — the design is optimized for a cruising pace of 8 kn (9.21 mph) backed by twin inboard Detroit Diesel propulsion. With an LOA of 58 ft and a 16 ft beam, it provides ample onboard volume, including three heads, 389 gal of fresh water, and 400 gal of fuel to support extended stays. The 14.49 ft (4.4166 m) draft suits deep water harbors and marina berths. Its fiberglass and plastic hull and composite decking are chosen for longevity and reduced upkeep.

Features of the Model

- Purpose-built motor yacht constructed with a fiberglass and plastic hull and composite deck
- Twin inboard Detroit Diesel propulsion; diesel fuel system
- Cruising speed 8 kn (9.21 mph); top speed 10 kn (11.51 mph)
- LOA 58 ft (17.68 m); beam 16 ft (5 m)
- Draft 14.49 ft (4.4166 m)
- Fresh water capacity 389 gal; fuel capacity 400 gal
- Three heads to support comfortable long term living aboard

Technical Specifications

- Length overall (LOA): 58 ft (17.68 m)
- Beam: 16 ft (5 m)
- Draft: min 14.49 ft (4.4166 m); max 14.49 ft (4.4166 m)
- Engines: 2 x Detroit Diesel, Inboard, Diesel
- Cruising speed: 8 kn (9.21 mph)
- Maximum speed: 10 kn (11.51 mph)
- Hull: fiberglass and plastic
- Deck: Composite
- Heads: 3
- Fresh water: 389 gal
- Fuel: 400 gal
- Type: motor yacht

Pricing and Ordering

For current pricing, availability, or to arrange an in person inspection of the 58' Houseboat by TRUMPY, please contact Andrey Shestakov at Shestakov Yacht Sales. Our team will organize showings and assist you through inspection, offer preparation, survey coordination, and closing to simplify your acquisition.

Questions and Answers

Q: What kind of yacht is the 58' Houseboat? A: It is a motor yacht featuring a fiberglass and plastic hull and a composite deck, designed for comfortable cruising and liveaboard use.

Q: How is it powered and how fast does it go? A: The vessel is driven by **twin**

TRUMPY-specified inboard engines with **Detroit Diesel** powerplants running on **diesel** fuel, providing a **cruising speed of 8 kn** (9.21 mph) and a **maximum of 10 kn** (11.51 mph).

Q: What are the key dimensions and draft? A: The boat measures **LOA 58 ft (17.68 m)** with a **beam of 16 ft (5 m)** and carries a **draft of 14.49 ft (4.4166 m)**.

Q: What capacities and facilities support longer stays aboard? A: It offers **water capacity 389 gal**, **fuel capacity 400 gal**, and **3 heads** to enable extended time aboard.

Q: How do I arrange a viewing or make an offer? A: Reach out to **Andrey Shestakov** at **Shestakov Yacht Sales** to schedule a showing of the 58' Houseboat by TRUMPY. Our brokerage team will support you with inspections, paperwork, and closing procedures.

Owner Experience Review

Owners often report that the 58' Houseboat by TRUMPY works equally well as a family cruiser for weekends or coastal trips and as a full time liveaboard. Online discussions note that "most of the houseboats just sit in the slip," a nod to how many restored models serve as seasonal or permanent harbor homes rather than constant cruisers. Typical listings reveal roomy 2 stateroom-plus crew layouts, richly aged butternut joinery, and an attractive aft deck with wide vistas; many buyers prize these voluminous living areas more than outright passagemaking performance. Galley and cabin arrangements vary significantly between refits, and long term owners commonly modernize the galley and onboard systems during upgrades.

Underway, the 58' Houseboat is described as semi displacement, with owners reporting coastal cruise speeds commonly in the 12–15 knot range and a solid,

deliberate motion rather than brisk acceleration; several examples show higher performance following repower projects. Owner commentary frequently advises that it is better deployed in protected and coastal waters — one remark summarizes it as "more of a lake house boat than a sea worthy yacht." As a wooden TRUMPY, attentive exterior maintenance is essential: even minor leaks can allow water intrusion and timber decay. Numerous boats undergo repowers or complete rebuilds from keel up, and owners note regular haulouts and ongoing shop time; a comprehensive restoration may take years and often approaches or exceeds half a million dollars in cost.

Pros and Cons

- Spacious 2 stateroom-plus crew configurations and a handsome aft deck provide generous accommodation and social areas.
- Warm, well patinated butternut interior woodwork and fine joinery are commonly admired by owners.
- Semi displacement hull yields a steady ride with reported coastal cruising in the neighborhood of 12–15 knots.
- Wooden construction demands rigorous exterior maintenance, since small leaks can precipitate rot.
- Complete restorations and engine repowers can be time consuming and expensive, frequently reaching into the hundreds of thousands.
- Best used in protected and coastal waters rather than for extended open ocean passagemaking.

Comparison with Other Models

Model	LOA	Beam	Draft	Speed (Cruising/Max)	Gross Tonnage
Houseboat	72' 0" (21.95 m)	18' 0" (5.49 m)		12 kn / 14 kn	

Cockpit Motoryacht with Flybridge	57' 0" (17.37 m)	14' 0" (4.34 m)	13' 1" (4 m)		
75 Motor Yacht	75' 0" (22.86 m)	17' 0" (5.33 m)	16' 5" (5 m)		
Cruiser	68' 0" (20.73 m)	16' 0" (4.98 m)	11' 3" (3.42 m) – 11' 9" (3.58 m)	9 kn / 13 kn	
Raised Pilot House	80' 0" (24.38 m)	18' 0" (5.49 m)	13' 1" (4 m) – 16' 5" (5 m)	10 kn / 12 kn	110
58' Houseboat	58' 0" (17.68 m)	16' 0" (5 m)	14' 6" (4.42 m)	8 kn / 10 kn	
68 Motoryacht	68' 0" (20.73 m)	16' 0" (5.03 m)	13' 8" (4.17 m)	8 kn / 11 kn	
N/A	58' 0" (17.68 m)	15' 0" (4.65 m)	15' 4" (4.67 m)		

SPECIFICATIONS

LOA:

58' 0" (17.68 m)

Beam:

16' 0" (5 m)

Cruise Speed:

8 kn / 9.21 mph

Water Capacity:

389 Gallons

Total Heads:

3

Hull Material:

Fiberglass and Plastic Yachts

Engines:

2

Engine Type:

Inboard

Min Draft:

14' 6" (4.42 m)

Max Draft:

14' 6" (4.42 m)

Max Speed:

10 kn / 11.51 mph

Fuel Capacity:

400 Gallons

Deck Material:

Composite

Manufacturer:

Detroit Diesel

Fuel Type:

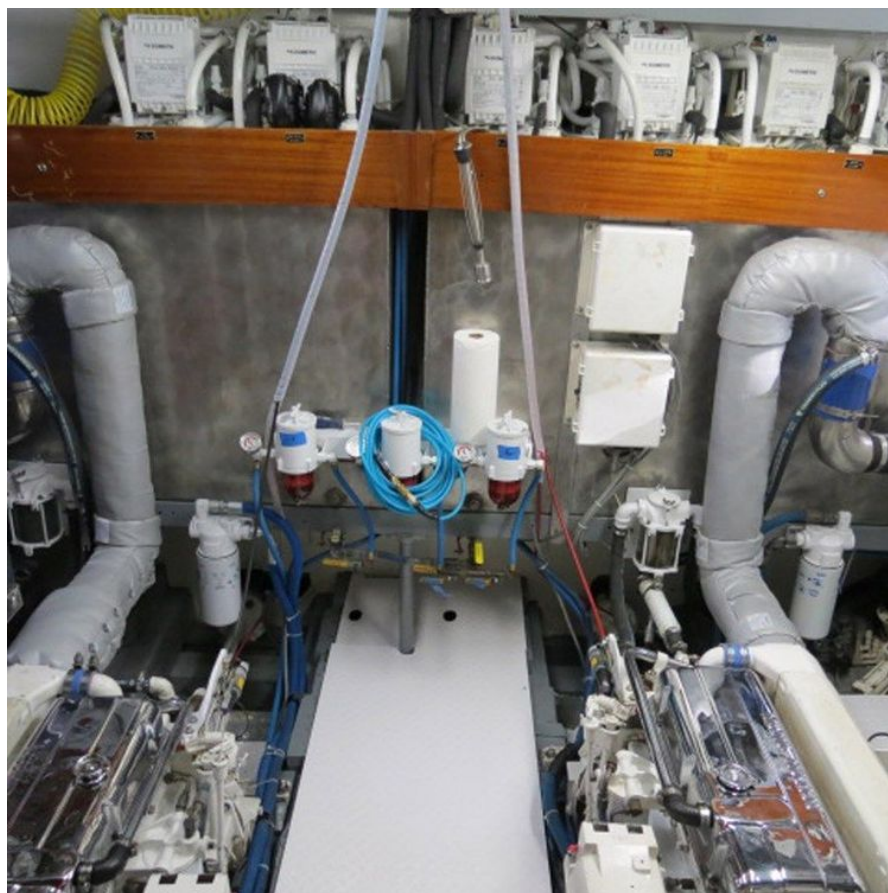
Diesel

GALLERY











CONTACTS

Shestakov Yacht Sales is a brokerage company specializing in the sale and service of yachts worldwide. The company offers services for buying and selling both new and used motor yachts, sailing vessels, and luxury superyachts. They also provide yacht registration, insurance, technical maintenance, crew selection, and charter organization services across the U.S., Canada, Latin America, the Caribbean, and the Bahamas.

The founder and lead broker of the company is Andrey Shestakov, a licensed and certified expert with extensive experience in marine engineering and shipbuilding.

The company has an extensive network of partnerships with major yacht manufacturers worldwide and provides services in multiple languages, including Russian, Ukrainian, Spanish, and English. The office is in Dania Beach, Florida, USA.

For more information and to view available yachts, you can visit the company's official website: <https://shestakovyachtsales.com>

Contact details

Phone: +1(954)274-4435

Email: andrey@shestakovyachtsales.com

Address



1380 Weeping Willow Way, Hollywood,
Florida 33019