



SHESTAKOV

Yacht Sales

70 MOTOR YACHT CHALLENGER – VERSILCRAFT



Builder:

VERSILCRAFT

Model:

70 Motor Yacht Challenger

LOA:

70' 0" (21.34 m)

Beam:

18' 0" (5.49 m)

Total Heads:

4

Crew Cabin:

1

Hull Material:

Fiberglass and Plastic Yachts

Deck Material:

Fiberglass

Engines:

2

Manufacturer:

MAN

Engine Type:

Inboard

Fuel Type:

Diesel

If you would like to buy a yacht **70 MOTOR YACHT CHALLENGER – VERSILCRAFT** or would like help, please call +1(954)274-4435 or visit shestakovyachtsales.com

TABLE OF CONTENTS

OVERVIEW	3
Selecting a 70 Motor Yacht Challenger	3
Features of the Model	3
Technical Specifications	3
Pricing and Ordering	4
Questions and Answers	4
Owner Experience Review	5
Pros and Cons	6
Comparison with Other Models	6
SPECIFICATIONS	8
GALLERY	9
CONTACTS	14

OVERVIEW

The 70 Motor Yacht Challenger from VERSILCRAFT is an elegant motor yacht designed in the motor yachts segment. Built on a sturdy fiberglass hull with a fiberglass deck, this model is offered through Andrey Shestakov and Shestakov Yacht Sales.

Selecting a 70 Motor Yacht Challenger

Opting for the 70 Motor Yacht Challenger places you on a 70 ft (21.34 m) platform featuring an 18 ft (5.49 m) beam, twin MAN inboard diesel engines, and an interior arrangement suited to extended cruising with four heads and a separate crew cabin. For buyers seeking a capable motor yacht in the larger motor yachts class, this design delivers a useful combination of interior volume, practical systems, and established engineering.

Features of the Model

- 70 ft (21.34 m) LOA and an 18 ft (5.49 m) beam that create spacious living areas
- Twin MAN inboard diesel setup providing dependable propulsion
- Four heads to maximize onboard privacy and convenience
- A dedicated crew cabin to support service and operational needs
- Robust fiberglass hull together with a fiberglass deck for longevity and straightforward upkeep

Technical Specifications

- Builder: VERSILCRAFT

- Model: 70 Motor Yacht Challenger
- Type: motor yacht
- Class: motor yachts
- Hull material: fiberglass and plastic
- Deck material: Fiberglass
- LOA: 70 ft (21.34 m)
- Beam: 18 ft (5.49 m)
- Engines: 2 x MAN, Inboard, Diesel
- Heads: 4
- Crew cabins: 1

Pricing and Ordering

To obtain current pricing, confirm availability, or arrange a private inspection of the 70 Motor Yacht Challenger, please contact Andrey Shestakov at Shestakov Yacht Sales. Our brokerage team can walk you through specifications, available options, and the purchase process to find the right motor yacht for your cruising plans.

Questions and Answers

Q: What is the length overall of the 70 Motor Yacht Challenger? A: The overall length is 70 ft (21.34 m). This substantial footprint supports comfortable liveaboard arrangements and socializing on deck. Key spec: **LOA 70 ft (21.34 m)** .

Q: What propulsion does it use? A: Propulsion is provided by **2 x MAN inboard diesel** engines, a configuration chosen for reliable performance on longer passages.

Q: What are the hull and deck materials? A: The vessel rides on a fiberglass hull

and is finished with a **fiberglass** deck, giving strength and relatively low maintenance. Key components: **hull** and **deck** .

Q: How many heads and crew cabins are on board? A: Accommodation includes **4 heads** and **1 crew cabin** , delivering enhanced comfort and support for extended cruising.

Q: Who can help me order or inspect this model? A: Contact **Andrey Shestakov** at **Shestakov Yacht Sales** to schedule viewings, submit offers, or get assistance with this motor yacht in the motor yachts category.

Owner Experience Review

Owners and brokers typically characterize the 70 Motor Yacht Challenger from VERSILCRAFT as well suited to both passages and overnight or extended family cruising. Several hulls have seen charter service, and a number of examples are regarded as appropriate for permanent liveaboard use in licensed marinas when hooked up to shore power. Broker specifications often list a full beam master with a king berth, a VIP with a queen, twin guest berths, and a crew cabin, accompanied by four heads and roomy interiors; while some refits are praised for a "warm modern interior," many boats remain spacious yet dated and may require interior updating.

On the water, feedback from owners and technicians points to a degree of setup sensitivity. One owner reported the yacht adopted an overly nose high trim near 20 knots. Forum discussions commonly cite shaft vibration and alignment problems—frequently associated with mismatched P brackets or altered/poorly installed mounts—that can produce vibration and lead to leaks; after significant refits or engine replacements, meticulous shaft and engine alignment plus propeller adjustments are often necessary, and trim behavior can shift substantially with changes in onboard weight distribution.

Expect conservative maintenance planning for older examples. Several owners note challenges in tracing the original builder and sourcing OEM parts, with limited factory support over time, and caution that long term upkeep of VERSILCRAFT models can be demanding. Many listings appear "as is," with engines and mechanical systems flagged for thorough inspection; there are multiple reports of PSS seal leaks and seawater ingress during sea trials, as well as frequent references to engine overhauls and refit expenditures—making these yachts attractive to buyers seeking projects for refit or conversion.

Pros and Cons

- Generous interior arrangement with a full beam master, VIP, twin guest berths, a crew cabin, and four heads that accommodates family and guest use.
- Brokers and owners consider the design suitable for passages, overnight stays, and long range family cruising.
- Commonly listed as project candidates, these yachts are often targeted for refit, conversion, or customization for liveaboard purposes.
- Reported shaft vibration and misalignment issues, including unequal P brackets, necessitate precise alignment and propeller attention.
- Owners have described an overly nose up attitude at around 20 knots and a marked sensitivity to where weight is placed aboard.
- Limited factory support and parts availability, with many older vessels offered "as is" and known for significant, ongoing maintenance demands.

Comparison with Other Models

Model	LOA	Beam	Draft	Speed (Cruising/Max)	Gross Tonnage
SUPER CHALLENGER	97' 0" (29.70 m)			12 kn / 21 kn	80

70 Motor Yacht Challenger	70' 0" (21.34 m)	18' 0" (5.49 m)			
Euroyacht Planet 125S Hardtop	126' 0" (38.41 m)	24' 0" (7.32 m)	6' 12" (2.13 m)	15 kn / 20 kn	269
N/A	147' 0" (45 m)	30' 0" (9.20 m)	8' 7" (2.61 m)	14 kn / 15.5 kn	499

SPECIFICATIONS

LOA:

70' 0" (21.34 m)

Total Heads:

4

Hull Material:

Fiberglass and Plastic Yachts

Engines:

2

Engine Type:

Inboard

Beam:

18' 0" (5.49 m)

Crew Cabin:

1

Deck Material:

Fiberglass

Manufacturer:

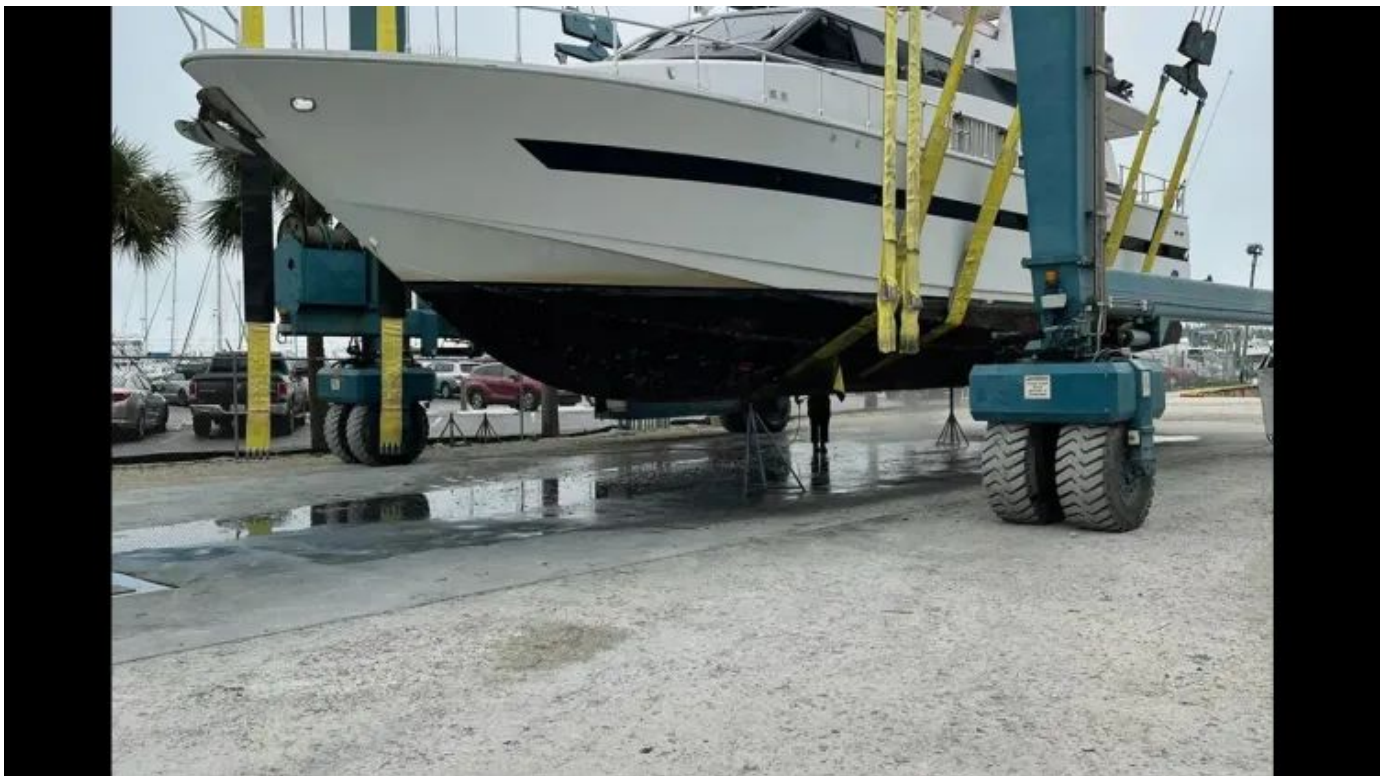
MAN

Fuel Type:

Diesel

GALLERY

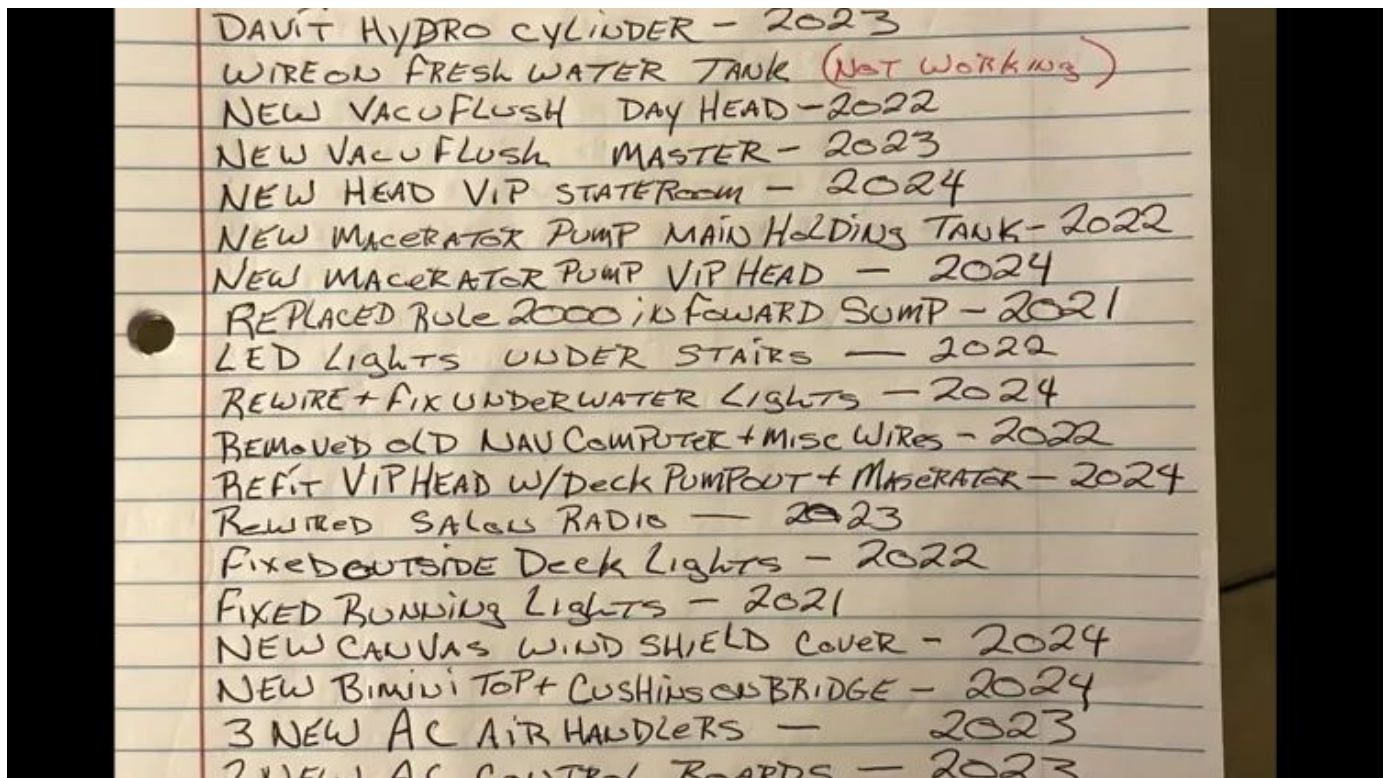






ENGINE SURVEY + GENERATORS - 2021
 Windless REPAIRED - 2021
 Bow THRUSTER REPAIRED - 2021
 2 NEW GARMIN GPS - 2021
 NEW WATER HEATER - 2022
 New BATTERY CHARGER 12V - 2023
 New 12VOLT BATTERY BANK - 2023
 Foward HALL SWITCHED TO 12V DC - 2023
 NEW AC Chiller - 2022
 NEW AC CIRCULATION PUMP - 2022
 FIXED 5 FRESH WATER Leaks FOR AC - 2022
 NEW DIVERTER IN Shower IN DAY HEAD - 2021
 NEW BATTERYS } 8-6 VOLT House BANK BATTERYS - OCT-2021
 } 2-12VOLT DEEP CYCLE INVERTER BATTERYS - 2021
 } 2-4D 12VOLT BANK #1 - 2023
 } 1-631 12VOLT BANK #2 - 2023
 } 2-AGM GROUP 31 THRUSTER BATTERYS - 2023
 } 8-GROUP 31 ENGINE BATTERYS - 2021

HAUL OUT - DEC 2022
 SAWD HULL - DEC 2022
 BARRIER COAT DEC 2022
 BOTTOM PAINT - DEC 2022
 Kilo PAC VOLTAGE REGULATOR - 2021
 FISHER PANDA CAPACITOR BANK - 2021
 FISHER PANDA CONTROL PANEL - 2021
 FISHER PANDA WATER PUMP (NEW) - 2021
 Kilo PAC NEW IMPELLER - 2021
 MAIn ENGINES OIL CHANGE - 2022
 FIXED VENT FAN IN MASTER + DAY HEAD - 2023
 REWIRED EXHAUST FANS IN ENGINE ROOM - 2022



CONTACTS

Shestakov Yacht Sales is a brokerage company specializing in the sale and service of yachts worldwide. The company offers services for buying and selling both new and used motor yachts, sailing vessels, and luxury superyachts. They also provide yacht registration, insurance, technical maintenance, crew selection, and charter organization services across the U.S., Canada, Latin America, the Caribbean, and the Bahamas.

The founder and lead broker of the company is Andrey Shestakov, a licensed and certified expert with extensive experience in marine engineering and shipbuilding.

The company has an extensive network of partnerships with major yacht manufacturers worldwide and provides services in multiple languages, including Russian, Ukrainian, Spanish, and English. The office is in Dania Beach, Florida, USA.

For more information and to view available yachts, you can visit the company's official website: <https://shestakovyachtsales.com>

Contact details

Phone: +1(954)274-4435

Email: andrey@shestakovyachtsales.com

Address



1380 Weeping Willow Way, Hollywood,
Florida 33019