



SHESTAKOV

Yacht Sales

EUROYACHT PLANET 125S HARDTOP – VERSILCRAFT



Builder:

VERSILCRAFT

Model:

Euroyacht Planet 125S Hardtop

LOA:

126' 0" (38.41 m)

Beam:

24' 0" (7.32 m)

Max Draft:

6' 12" (2.13 m)

Cruise Speed:

15 kn / 17.26 mph

Max Speed:

20 kn / 23.02 mph

Gross Tonnage:

269 Pounds

Water Capacity:

3170.06 Gallons

Fuel Capacity:

8453.51 Gallons

Sleeps:

9

Total Heads:

4

If you would like to buy a yacht **EUROYACHT PLANET 125S HARDTOP – VERSILCRAFT** or would like help, please call +1(954)274-4435 or visit shestakovyachtsales.com

TABLE OF CONTENTS

OVERVIEW	3
Selecting a Euroyacht Planet 125S Hardtop	3
Features of the Model	3
Technical Specifications	4
Pricing and Ordering	4
Questions and Answers	4
Owner Experience Review	5
Pros and Cons	6
Comparison with Other Models	6
SPECIFICATIONS	8
GALLERY	9
CONTACTS	14

OVERVIEW

The Euroyacht Planet 125S Hardtop from VERSILCRAFT is a 126 ft motor yacht built on a fiberglass and plastic hull with a fiberglass deck. It is engineered to cruise comfortably at 15 kn (17.26 mph) and to reach up to 20 kn (23.02 mph) at full speed. Configured to sleep nine with dedicated crew quarters, this yacht offers a blend of performance, internal volume, and fuel range suited to extended cruising. For availability and further details, contact Andrey Shestakov at Shestakov Yacht Sales.

Selecting a Euroyacht Planet 125S Hardtop

Opt for this model when you need a 38.41 m platform featuring a 24 ft beam and a practical 6.988 ft draft, driven by three inboard Caterpillar diesel engines. As a motor yacht constructed on a fiberglass and plastic hull, it offers a calculated mix of speed, onboard comfort, and operational independence—with 8,453.51 gallons of fuel and 3,170.06 gallons of potable water capacity to support longer voyages for family and crew.

Features of the Model

- Triple Caterpillar inboard diesel propulsion (3 engines)
- 126 ft (38.41 m) LOA; 24 ft (7.32 m) beam; 6.988 ft (2.13 m) draft
- Cruising speed 15 kn (17.26 mph); max speed 20 kn (23.02 mph)
- 269 GT internal volume
- Sleeps 9 guests; 4 heads; crew: 3 cabins / 6 berths
- Hull: fiberglass and plastic; Deck: Fiberglass
- Fuel capacity 8,453.51 gal; Fresh water capacity 3,170.06 gal

Technical Specifications

- Model: Euroyacht Planet 125S Hardtop
- Builder: VERSILCRAFT
- Type: motor yacht
- Hull: fiberglass and plastic
- Deck: Fiberglass
- LOA: 126 ft (38.41 m)
- Beam: 24 ft (7.32 m)
- Draft (max): 6.988 ft (2.13 m)
- Gross Tonnage: 269 GT
- Engines: 3 x Caterpillar, Inboard, Diesel
- Speed (cruise/max): 15 kn (17.26 mph) / 20 kn (23.02 mph)
- Accommodations: Sleeps 9; Heads: 4
- Crew: 3 cabins; 6 berths
- Fuel Capacity: 8,453.51 gal
- Fresh Water Capacity: 3,170.06 gal

Pricing and Ordering

Price details are provided on request. Reach out to Andrey Shestakov and his team at Shestakov Yacht Sales to review availability, arrange inspections, and plan a purchase of the Euroyacht Planet 125S Hardtop by VERSILCRAFT.

Questions and Answers

- Q: What are the key dimensions of the Euroyacht Planet 125S Hardtop? A: The **LOA** measures 126 ft (38.41 m), the **beam** is 24 ft (7.32 m), and the **draft** is 6.988 ft (2.13 m).
- Q: What engines power this yacht? A: Propulsion is provided by **three**

Caterpillar inboard diesel engines. As a motor yacht, this configuration focuses on dependable power delivery and ease of servicing.

- Q: What are the cruising and maximum speeds? A: The listed **cruising speed** is 15 kn (17.26 mph), while the **maximum speed** is 20 kn (23.02 mph).
- Q: How many people can stay aboard? A: **Accommodations** are arranged for 9 guests with **4 heads**. The designated **crew** area contains 3 cabins and a total of 6 berths.
- Q: How do I get pricing and arrange a viewing? A: For **pricing** and to schedule a viewing, contact Andrey Shestakov at Shestakov Yacht Sales regarding the Euroyacht Planet 125S Hardtop by VERSILCRAFT.

Owner Experience Review

Buyers considering the Euroyacht Planet 125S Hardtop from VERSILCRAFT tend to view it as a low volume flagship tailored to private long range cruising with the option of occasional charter. Delivery records indicate builds completed in 2010 and 2011, and the common arrangement of four staterooms for 8–9 guests with roughly a three person crew complements private family use. Interior design credits to Luxury Projects and sales materials highlighting full teak decks and conventional superyacht detailing suggest a classic, traditional finish throughout the yacht. Public commentary from owners is limited; most accessible information derives from professional spec sheets and brokerage descriptions rather than enthusiast forums.

On the water, various listings and BOATPro information quote the model at roughly 20 knots for cruising, with some reports of top speeds reaching about 25 knots—figures that sit above average for yachts in the 35–40 m range. That combination of speed and range makes it efficient for covering longer distances between anchorages or for fitting more destinations into a charter week. A number of examples are noted as RINA classified, which can be important if you plan to include the yacht in occasional charter operations or

require commercial grade survey standards.

From a maintenance perspective, many examples are fitted with Caterpillar C32 ACERT powerplants, so prospective owners should budget for the elevated parts and servicing costs associated with large C32 engines. There are no widely reported, model specific failure trends in public owner discussions, and vessels held to classification generally follow stricter survey and maintenance regimes. Given the limited direct owner feedback available online, it is advisable to set expectations based on the condition revealed in individual surveys and the service history of each hull.

Pros and Cons

- Above average cruising performance for its size, with about 20 knots cruise and up to 25 knots top speed reported.
- Four stateroom layout for 8–9 guests suits private family use and occasional charter.
- RINA classification noted on some examples supports commercial survey and charter considerations.
- Public, first hand owner reviews are scarce and information skews toward broker/spec sheets.
- Caterpillar C32 ACERT installations carry high parts and service costs typical of large engines.
- Low volume flagship status can mean fewer model specific comparables and more planning for sourcing.

Comparison with Other Models

Model	LOA	Beam	Draft	Speed (Cruising/Max)	Gross Tonnage
SUPER CHALLENGER	97' 0" (29.70 m)			12 kn / 21 kn	80

70 Motor Yacht Challenger	70' 0" (21.34 m)	18' 0" (5.49 m)			
Euroyacht Planet 125S Hardtop	126' 0" (38.41 m)	24' 0" (7.32 m)	6' 12" (2.13 m)	15 kn / 20 kn	269
N/A	147' 0" (45 m)	30' 0" (9.20 m)	8' 7" (2.61 m)	14 kn / 15.5 kn	499

SPECIFICATIONS

LOA:

126' 0" (38.41 m)

Max Draft:

6' 12" (2.13 m)

Cruise Speed:

15 kn / 17.26 mph

Gross Tonnage:

269 Pounds

Fuel Capacity:

8453.51 Gallons

Sleeps:

9

Crew Cabin:

3

Hull Material:

Fiberglass and Plastic Yachts

Engines:

3

Engine Type:

Inboard

Beam:

24' 0" (7.32 m)

Max Speed:

20 kn / 23.02 mph

Water Capacity:

3170.06 Gallons

Total Heads:

4

Crew Berths:

6

Deck Material:

Fiberglass

Manufacturer:

Caterpillar

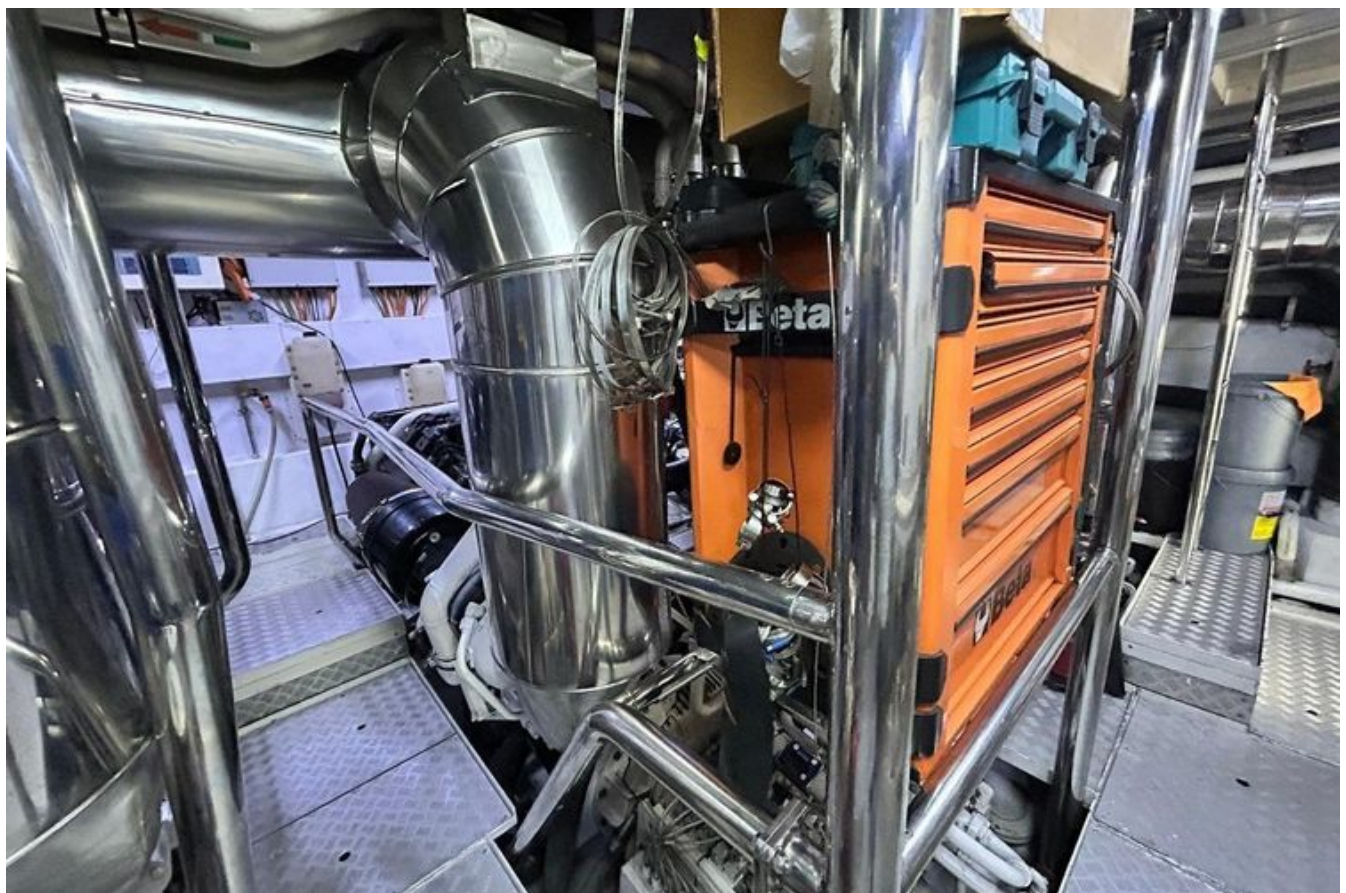
Fuel Type:

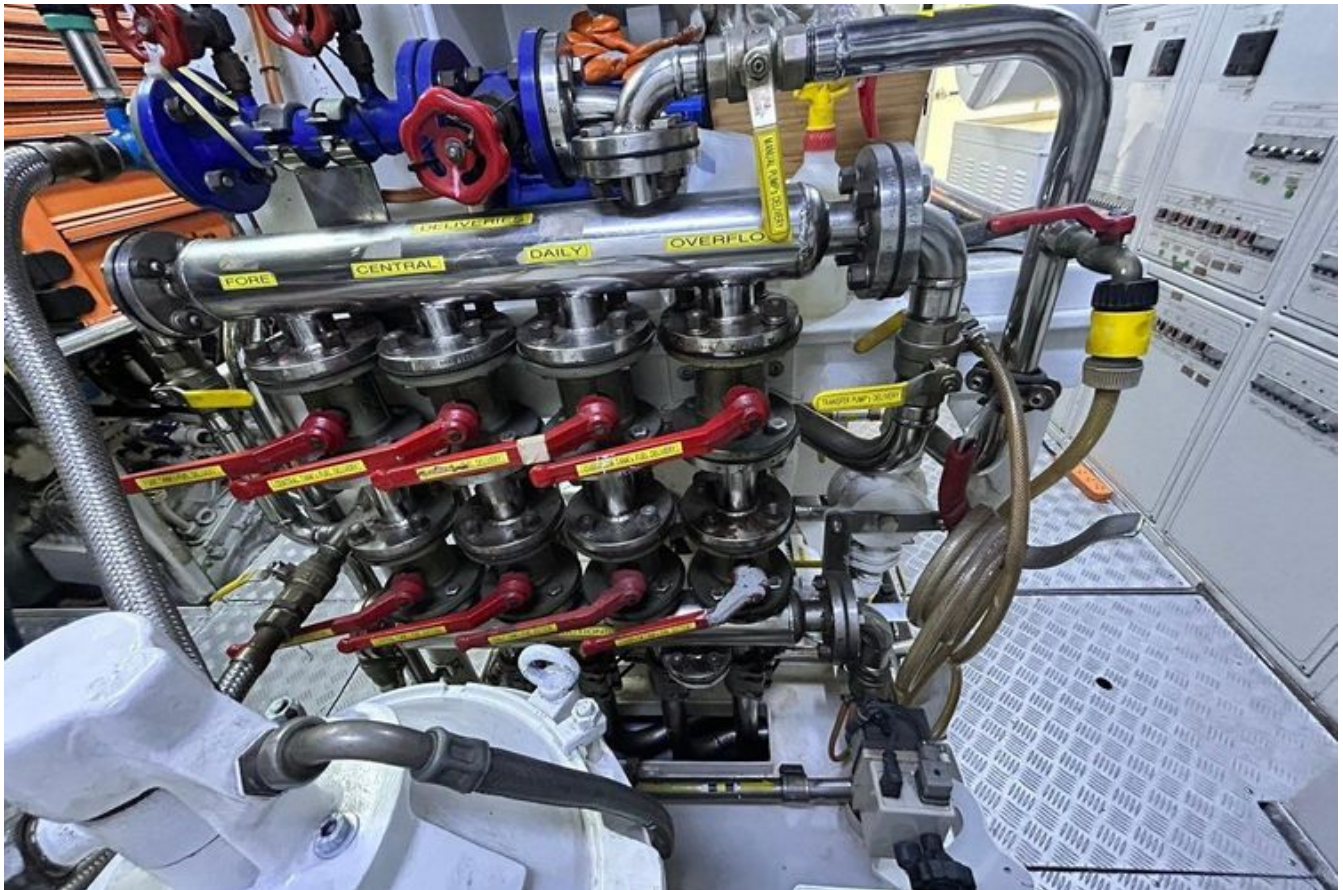
Diesel

GALLERY











CONTACTS

Shestakov Yacht Sales is a brokerage company specializing in the sale and service of yachts worldwide. The company offers services for buying and selling both new and used motor yachts, sailing vessels, and luxury superyachts. They also provide yacht registration, insurance, technical maintenance, crew selection, and charter organization services across the U.S., Canada, Latin America, the Caribbean, and the Bahamas.

The founder and lead broker of the company is Andrey Shestakov, a licensed and certified expert with extensive experience in marine engineering and shipbuilding.

The company has an extensive network of partnerships with major yacht manufacturers worldwide and provides services in multiple languages, including Russian, Ukrainian, Spanish, and English. The office is in Dania Beach, Florida, USA.

For more information and to view available yachts, you can visit the company's official website: <https://shestakovyachtsales.com>

Contact details

Phone: +1(954)274-4435

Email: andrey@shestakovyachtsales.com

Address



1380 Weeping Willow Way, Hollywood,
Florida 33019