



SHESTAKOV

Yacht Sales

57 CONVERTIBLE SPORTFISH – VIKING



Builder:

VIKING

Model:

57 Convertible Sportfish

LOA:

57' 0" (17.37 m)

Beam:

18' 0" (5.49 m)

Water Capacity:

250 Gallons

Fuel Capacity:

1500 Gallons

Sleeps:

4

Total Heads:

2

Hull Material:

Fiberglass and Plastic Yachts

Deck Material:

Fiberglass

Engines:

2

Manufacturer:

Detroit Diesel

If you would like to buy a yacht **57 CONVERTIBLE SPORTFISH – VIKING** or would like help, please call +1(954)274-4435 or visit shestakovyachtsales.com

TABLE OF CONTENTS

OVERVIEW	3
Selecting a 57 Convertible Sportfish	3
Features of the Model	3
Technical Specifications	4
Pricing and Ordering	4
Questions and Answers	4
Owner Experience Review	5
Pros and Cons	6
Comparison with Other Models	7
SPECIFICATIONS	8
GALLERY	9
CONTACTS	14

OVERVIEW

The 57 Convertible Sportfish from VIKING pairs serious offshore capability with welcoming onboard livability. Built as a motor yacht tailored for dedicated sport fisherman, it rides on a fiberglass and plastic hull and offers layouts and range that many crews require. For professional assistance and access to available listings, contact Andrey Shestakov and the team at Shestakov Yacht Sales.

Selecting a 57 Convertible Sportfish

Opt for the 57 Convertible Sportfish when you need a tried-and-true 57 ft platform with an 18 ft beam, twin inboard Detroit Diesel propulsion, and a design that functions as a flexible sport fisherman within the motor yacht category. With accommodations for four, two heads, and substantial fuel and water tanks, it suits anglers and cruisers who expect comfort both underway and at anchor.

Features of the Model

- Twin-engine assurance: 2 x Detroit Diesel with **Inboard** drive and **Diesel** fuel for trustworthy power and serviceability.
- Durable build: a fiberglass and plastic hull with a Fiberglass deck for low maintenance and long service life.
- Comfortable layout: **Sleeps 4** and includes **2 heads** to support extended voyages.
- Offshore proportions: 57 ft LOA and 18 ft beam provide a blend of sea-keeping, deck working room, and interior volume.
- Crafted by VIKING, marrying fishing-focused practicality with upscale yacht finishes.

Technical Specifications

- Builder: VIKING
- Model: 57 Convertible Sportfish
- Classification: motor yacht / sport fisherman
- Hull: fiberglass and plastic
- LOA: 57 ft (17.37 m)
- Beam: 18 ft (5.49 m)
- Engines: 2 x Detroit Diesel
- Engine type: Inboard
- Fuel: Diesel
- Sleeps: 4
- Heads: 2
- Fuel capacity: 1500 gal
- Water capacity: 250 gal
- Deck material: Fiberglass

Pricing and Ordering

For up-to-date pricing, current availability, and to schedule viewings, reach out to Andrey Shestakov at Shestakov Yacht Sales. Our brokerage will assist you through selection, negotiating an offer, survey planning, and delivery arrangements for the 57 Convertible Sportfish.

Questions and Answers

Q: What type of yacht is the 57 Convertible Sportfish? A: It is a motor yacht laid out as a sport fisherman built on a fiberglass and plastic hull, combining offshore performance with onboard comfort.

Q: What are the key dimensions? A: The **LOA** measures 57 ft (17.37 m) while the **beam** is 18 ft (5.49 m), providing a footprint that balances fishing utility and cruising stability.

Q: What engines power this model? A: Twin **Detroit Diesel** powerplants with **Inboard** propulsion and **Diesel** fuel deliver dependable, service-friendly propulsion.

Q: How is the interior arranged for trips? A: Accommodation includes **Sleeps 4** and **2 heads** , backed by a **fuel capacity** of 1500 gal and **water capacity** of 250 gal to support extended passages.

Q: Who can help me purchase one? A: Contact Andrey Shestakov and the Shestakov Yacht Sales team for **advice** , **availability** , and **offers** on the 57 Convertible Sportfish.

Owner Experience Review

Owners and captains routinely operate the 57 Convertible Sportfish as a tournament-capable convertible for canyon runs and offshore blue-water work, and reviews of the hull's behavior on the water support that reputation. Professional sea trials report a sea-kindly, dry ride with controlled spray and a gentle forefoot entry; reviewers also praise its ability to handle aggressive back-down maneuvers, with the mezzanine/transom configuration and inset scuppers efficiently shedding water.

When not rigged for fishing, the layout adapts well to family cruising. Brokers often point to three-stateroom arrangements with alternate galley configurations, satin teak joinery, and a level of fit and finish that many say "raises the bar." The mezzanine seating combined with a large cockpit keeps anglers and leisure guests comfortably separated, and listings frequently emphasize the model's livability for longer cruises. Performance depends on

installed power: earlier diesel packages commonly cruise in the high-20s to low-30s knots, while later MAN V12 1550-hp installations are often advertised with about a 32-kt cruise and approximately 40-kt top speed.

Ownership commentary focuses on service access and ongoing maintenance needs. The engine rooms are typically stand-up with dedicated service routing, Racor filtration, and oil-change provisions; centralized seawater systems and robust engine beds can make routine tasks more straightforward.

Nevertheless, servicing large diesels and complex systems is costly over time; older vessels commonly require genset attention, electronics updates, and attention to engine hours. Additionally, some owners have reported gelcoat “sidercracking” on certain early- to mid-2000s VIKING hulls.

Pros and Cons

- Tournament-caliber cockpit and mezzanine ergonomics that support blue-water fishing and keep guests comfortable while observing.
- Sea-kindly and dry on passage with dependable back-down behavior in choppy seas.
- Three-stateroom interiors with practical galley choices and high-quality joinery suitable for extended cruising.
- Ownership expenses can be considerable because of big-diesel maintenance and the complexity of onboard systems.
- Older examples frequently need genset servicing, electronics refreshes, or consideration of repower options.
- Some early to mid-2000s VIKING hulls have been reported to exhibit gelcoat/sidercracking.

Comparison with Other Models

Model	LOA	Beam	Draft	Speed (Cruising/ Max)	Gross Tonnage
57 Convertible Sportfish	57' 0" (17.37 m)	18' 0" (5.49 m)			
Sport Tower Sport Fisherman	42' 0" (12.80 m)	15' 0" (4.80 m)	13' 8" (4.17 m)	25 kn / 32 kn	
Convertible	68' 0" (20.93 m)	19' 0" (5.89 m)	17' 9" (5.42 m)	35 kn / 41 kn	96
43 Convertible	43' 0" (13.11 m)	15' 0" (4.62 m)			
52 Convertible	52' 0" (15.85 m)	17' 0" (5.31 m)	16' 8" (5.08 m)	32 kn / 36 kn	
37 Billfish	37' 0" (11.48 m)	13' 0" (4.22 m)			
Covertible	55' 0" (17.02 m)	17' 0" (5.28 m)	15' 10" (4.83 m)	30 kn / 34 kn	
Sport Cruiser	75' 0" (22.86 m)	19' 0" (5.79 m)	17' 3" (5.25 m)	24 kn / 32 kn	
92 Enclosed Bridge	93' 0" (28.42 m)	24' 0" (7.34 m)	19' 5" (5.92 m)		
43 Open	43' 0" (13.11 m)	15' 0" (4.65 m)	13' 11" (4.25 m)	25 kn / 32 kn	

SPECIFICATIONS

LOA:

57' 0" (17.37 m)

Water Capacity:

250 Gallons

Sleeps:

4

Hull Material:

Fiberglass and Plastic Yachts

Engines:

2

Engine Type:

Inboard

Beam:

18' 0" (5.49 m)

Fuel Capacity:

1500 Gallons

Total Heads:

2

Deck Material:

Fiberglass

Manufacturer:

Detroit Diesel

Fuel Type:

Diesel

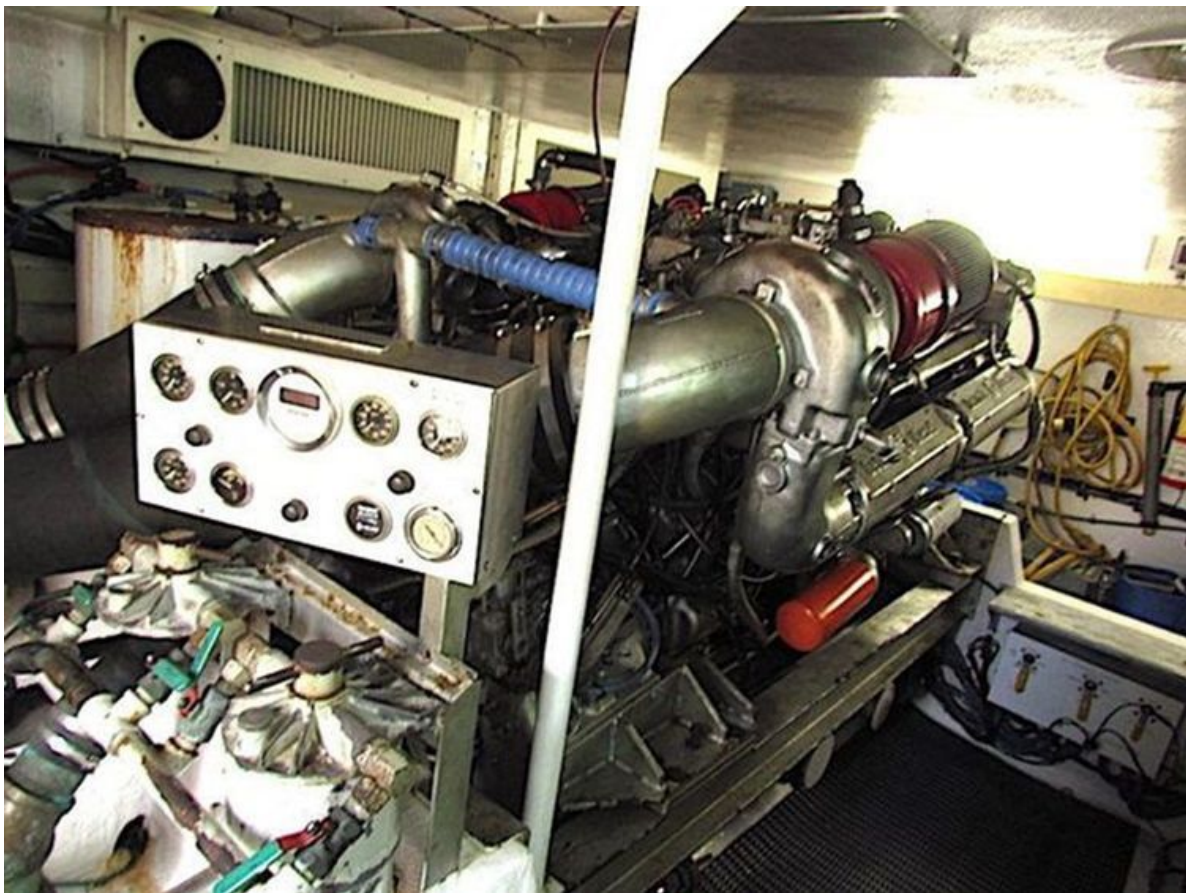
GALLERY











CONTACTS

Shestakov Yacht Sales is a brokerage company specializing in the sale and service of yachts worldwide. The company offers services for buying and selling both new and used motor yachts, sailing vessels, and luxury superyachts. They also provide yacht registration, insurance, technical maintenance, crew selection, and charter organization services across the U.S., Canada, Latin America, the Caribbean, and the Bahamas.

The founder and lead broker of the company is Andrey Shestakov, a licensed and certified expert with extensive experience in marine engineering and shipbuilding.

The company has an extensive network of partnerships with major yacht manufacturers worldwide and provides services in multiple languages, including Russian, Ukrainian, Spanish, and English. The office is in Dania Beach, Florida, USA.

For more information and to view available yachts, you can visit the company's official website: <https://shestakovyachtsales.com>

Contact details

Phone: +1(954)274-4435

Email: andrey@shestakovyachtsales.com

Address



1380 Weeping Willow Way, Hollywood,
Florida 33019