



SHESTAKOV

Yacht Sales

ENCLOSED BRIDGE – VIKING



Builder:

VIKING

Model:

Enclosed Bridge

LOA:

74' 0" (22.56 m)

Beam:

19' 0" (5.99 m)

Max Draft:

19' 8" (6 m)

Water Capacity:

385 Gallons

Fuel Capacity:

3000 Gallons

Total Heads:

5

Hull Material:

Fiberglass and Plastic Yachts

Deck Material:

Fiberglass

Engines:

2

Manufacturer:

MTU

If you would like to buy a yacht **ENCLOSED BRIDGE – VIKING** or would like help, please call +1(954)274-4435 or visit shestakovyachtsales.com

TABLE OF CONTENTS

OVERVIEW 3

- Selecting a Enclosed Bridge 3
- Features of the Model 3
- Technical Specifications 4
- Pricing and Ordering 4
- Questions and Answers 4
- Owner Experience Review 5
- Pros and Cons 6
- Comparison with Other Models 6

SPECIFICATIONS 8

GALLERY 9

CONTACTS 14

OVERVIEW

Explore the Enclosed Bridge by VIKING—a premium motor yacht built on a fiberglass and plastic hull—offered through Shestakov Yacht Sales. Broker Andrey Shestakov is available to assist with selection, sea trials, and purchase coordination.

Selecting a Enclosed Bridge

Positioned in the motor yacht class, the Enclosed Bridge appeals to owners seeking twin-diesel dependability, an ample 3,000-gallon fuel reserve, and the convenience of five heads aboard a 74 ft platform with a 19 ft beam. For personalized guidance on how this model fits your cruising profile, contact Andrey Shestakov at Shestakov Yacht Sales.

Features of the Model

- Twin MTU inboard diesel propulsion (2 engines) engineered for assured long-distance performance
- Generous tankage supporting extended passages: 3,000 gal fuel capacity and 385 gal potable water
- Five heads to accommodate prolonged stays and larger guest rosters
- Sturdy fiberglass and plastic hull paired with a fiberglass deck for proven durability
- Thoughtful proportions for bluewater capability: LOA 74 ft (22.56 m), beam 19 ft (5.99 m), draft 19.685 ft (6 m)

Technical Specifications

- LOA: 74 ft (22.56 m)
- Beam: 19 ft (5.99 m)
- Draft (max): 19.685 ft (6 m)
- Engines: 2 x MTU
- Engine type: Inboard
- Fuel type: Diesel
- Heads: 5
- Fuel capacity: 3,000 gal
- Water capacity: 385 gal
- Hull: fiberglass and plastic
- Deck: Fiberglass

Pricing and Ordering

To obtain current pricing, inquire about build slots, or begin the purchase process for the Enclosed Bridge, reach out to Andrey Shestakov at Shestakov Yacht Sales. We will arrange inspections, manage paperwork, and help schedule delivery to suit your timeline.

Questions and Answers

Q: Which category does the Enclosed Bridge fall into? A: It is classified as a motor yacht in the motor yacht class, constructed on a fiberglass and plastic hull with a fiberglass deck. That combination emphasizes **durability** and **ease of maintenance** .

Q: Who is the manufacturer of this design? A: The vessel is produced by VIKING. The marque is known for prioritizing **engineering** and **craftsmanship**

Q: What is the propulsion package? A: Power is supplied by **two** MTU **inboard diesel** engines, offering the twin-engine redundancy many buyers expect for extended **range** and dependable performance.

Q: What are the principal dimensions? A: The vessel measures **LOA** 74 ft (22.56 m), **beam** 19 ft (5.99 m), and **draft** 19.685 ft (6 m), figures important for **slip planning** and general **cruising** considerations.

Q: How do I begin the purchase? A: Contact Andrey Shestakov at Shestakov Yacht Sales for **consultation** , **availability** , and **offer preparation** on the Enclosed Bridge.

Owner Experience Review

Owners favor the Enclosed Bridge from VIKING for owner-operated long-range cruising, tournament-capable sportfishing, and the practicality of living aboard. The climate-controlled enclosed helm converts the bridge into an all-weather command station—a feature many owners list as a priority. Typical interior arrangements on these convertibles span three to five staterooms with a capacious salon and galley, and numerous examples display owner-driven enhancements such as upgraded appliances, a washer/dryer, and added storage configured to support extended voyages.

On the water, owners report confident offshore manners for a convertible, with a solid, composed ride in head seas and predictable helm response. These yachts generally perform best at comfortable cruise speeds during long runs; while the enclosed bridge adds protection and comfort it also alters sightlines versus an open flybridge, and larger variants can feel cumbersome in tight, close-quarters handling.

Maintenance on these yachts aligns with big-boat expectations. Many VIKING

enclosed-bridge models are outfitted with MTU 16V2000-series power where major overhauls and replacement parts carry significant expense; therefore, documented maintenance history and recorded engine hours substantially affect resale value. Engine rooms are typically well laid out with accessible service points (often optionally fitted with ER air conditioning), and recurring owner costs commonly include electronics upgrades and, for boats with soft enclosures, periodic replacement of canvas or Isinglass.

Pros and Cons

- Climate-controlled enclosed helm creates a comfortable, all-weather working environment and central electronics station.
- Assured offshore handling with a solid feel in head seas and consistent steering for extended passages.
- Roomy three- to five-stateroom interiors and frequent owner upgrades make the design suitable for liveaboard use and longer cruises.
- The enclosed bridge reduces direct sightlines compared to an open flybridge.
- Larger examples can feel heavy when performing tight, close-quarters maneuvers.
- Maintenance of MTU 16V2000-series engines and ongoing electronics/enclosure upkeep can increase ownership expenses.

Comparison with Other Models

Model	LOA	Beam	Draft	Speed (Cruising/Max)	Gross Tonnage
Enclosed Bridge	74' 0" (22.56 m)	19' 0" (5.99 m)	19' 8" (6 m)		
Sport Tower Sport Fisherman	42' 0" (12.80 m)	15' 0" (4.80 m)	13' 8" (4.17 m)	25 kn / 32 kn	
Convertible	68' 0" (20.93 m)	19' 0" (5.89 m)	17' 9" (5.42 m)	35 kn / 41 kn	96

43 Convertible	43' 0" (13.11 m)	15' 0" (4.62 m)			
52 Convertible	52' 0" (15.85 m)	17' 0" (5.31 m)	16' 8" (5.08 m)	32 kn / 36 kn	
37 Billfish	37' 0" (11.48 m)	13' 0" (4.22 m)			
Convertible	55' 0" (17.02 m)	17' 0" (5.28 m)	15' 10" (4.83 m)	30 kn / 34 kn	
Sport Cruiser	75' 0" (22.86 m)	19' 0" (5.79 m)	17' 3" (5.25 m)	24 kn / 32 kn	
92 Enclosed Bridge	93' 0" (28.42 m)	24' 0" (7.34 m)	19' 5" (5.92 m)		
43 Open	43' 0" (13.11 m)	15' 0" (4.65 m)	13' 11" (4.25 m)	25 kn / 32 kn	

SPECIFICATIONS

LOA:

74' 0" (22.56 m)

Max Draft:

19' 8" (6 m)

Water Capacity:

385 Gallons

Total Heads:

5

Hull Material:

Fiberglass and Plastic Yachts

Engines:

2

Engine Type:

Inboard

Beam:

19' 0" (5.99 m)

Fuel Capacity:

3000 Gallons

Deck Material:

Fiberglass

Manufacturer:

MTU

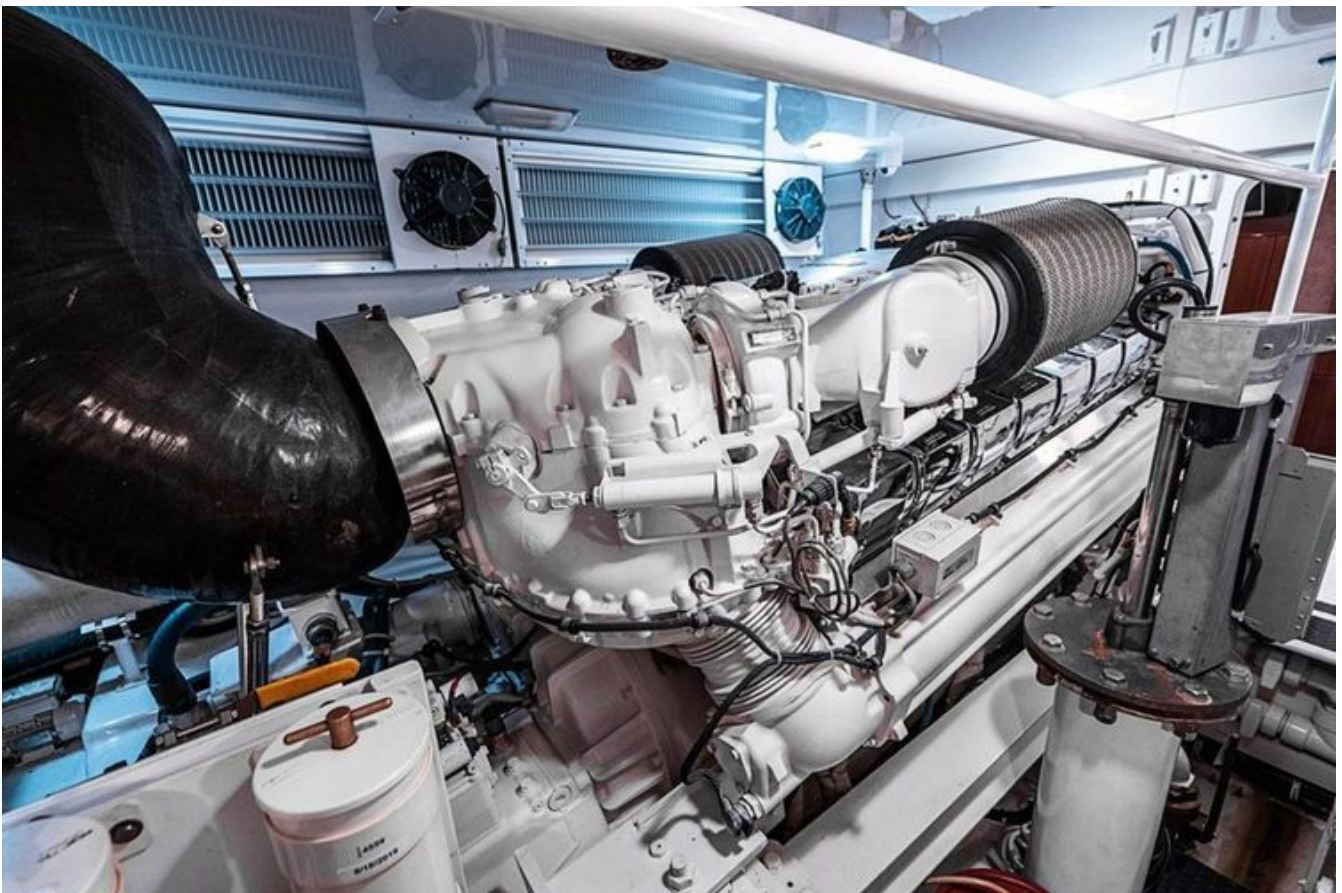
Fuel Type:

Diesel

GALLERY











CONTACTS

Shestakov Yacht Sales is a brokerage company specializing in the sale and service of yachts worldwide. The company offers services for buying and selling both new and used motor yachts, sailing vessels, and luxury superyachts. They also provide yacht registration, insurance, technical maintenance, crew selection, and charter organization services across the U.S., Canada, Latin America, the Caribbean, and the Bahamas.

The founder and lead broker of the company is Andrey Shestakov, a licensed and certified expert with extensive experience in marine engineering and shipbuilding.

The company has an extensive network of partnerships with major yacht manufacturers worldwide and provides services in multiple languages, including Russian, Ukrainian, Spanish, and English. The office is in Dania Beach, Florida, USA.

For more information and to view available yachts, you can visit the company's official website: <https://shestakovyachtsales.com>

Contact details

Phone: +1(954)274-4435

Email: andrey@shestakovyachtsales.com

Address



1380 Weeping Willow Way, Hollywood,
Florida 33019