



SHESTAKOV

Yacht Sales

268 VISTA - VOLVO PENTA



Builder:

VOLVO PENTA

Model:

268 Vista

LOA:

28' 0" (8.56 m)

Beam:

8' 0" (2.56 m)

Water Capacity:

20 Gallons

Fuel Capacity:

85 Gallons

Engines:

1

Manufacturer:

Volvo Penta

Engine Type:

I/O

Fuel Type:

Gas

If you would like to buy a yacht **268 VISTA - VOLVO PENTA** or would like help, please call +1(954)274-4435 or visit shestakovyachtsales.com

TABLE OF CONTENTS

OVERVIEW	3
Selecting a 268 Vista	3
Features of the Model	3
Technical Specifications	4
Pricing and Ordering	4
Questions and Answers	4
Owner Experience Review	5
Pros and Cons	6
Comparison with Other Models	6
SPECIFICATIONS	7
GALLERY	8
CONTACTS	13

OVERVIEW

The 268 Vista from VOLVO PENTA occupies a compact niche in the cruiser segment, offering an efficient blend of size and simplicity for varied days on the water. At 28 ft (8.56 m) LOA with an 8 ft (2.56 m) beam, it presents an accessible platform for owners who want practical performance and uncomplicated systems. For personalized assistance from initial inquiry through delivery, contact Andrey Shestakov and the team at Shestakov Yacht Sales.

Selecting a 268 Vista

Selecting the 268 Vista should center on how its footprint and capabilities match your cruising habits. Its 28 ft (8.56 m) overall length and 8 ft (2.56 m) beam make maneuvering and marina placement straightforward. The single I/O gasoline propulsion simplifies ownership and upkeep, while the 85 gal fuel and 20 gal water reserves support relaxed day trips typical of a motor yacht designed for the cruiser segment. Consult with Andrey Shestakov at Shestakov Yacht Sales to tailor the 268 Vista specification set to your intended use and berth.

Features of the Model

- A single-engine arrangement (1x I/O, Gas) that favors ease of ownership and straightforward maintenance.
- Useful tankage—85 gal fuel and 20 gal water—configured for flexible day-cruising itineraries.
- Compact dimensions that fit a wide variety of marinas and slip sizes: 28 ft LOA, 8 ft beam.
- Built with the engineering heritage of VOLVO PENTA, delivering the practical

utility expected from a small motor yacht in the cruiser class.

Technical Specifications

- Builder: VOLVO PENTA
- Model: 268 Vista
- Category: motor yacht, cruiser
- LOA: 28 ft (8.56 m)
- Beam: 8 ft (2.56 m)
- Engines: 1
- Engine type: I/O
- Engine fuel type: Gas
- Fuel capacity: 85 gal
- Water capacity: 20 gal

Pricing and Ordering

For up-to-date pricing, availability, and to schedule viewings of the 268 Vista, please reach out to Andrey Shestakov at Shestakov Yacht Sales. Our brokerage team will arrange inspections, clarify specifications, and assist with documentation and delivery logistics to make your purchase process efficient.

Questions and Answers

Q: What is the primary category of the 268 Vista? A: It is a compact motor yacht in the cruiser class, designed for relaxed coastal and near shore boating. Key **category** features prioritize owner-friendly operation and versatility.

Q: What are the dimensions of the boat? A: The **LOA** measures 28 ft (8.56 m) and the **beam** is 8 ft (2.56 m), offering a proportional footprint for easy

handling and marina compatibility.

Q: What is the propulsion setup? A: The vessel is configured with a **single-engine** layout (1x **I/O**) running on **Gas** , which keeps operation and routine maintenance relatively simple.

Q: What are the onboard capacities? A: The **fuel capacity** is 85 gal and the **water capacity** is 20 gal, adequate for typical day trips and short overnights.

Q: Who can help me purchase this model? A: Andrey Shestakov and Shestakov Yacht Sales will manage your **brokerage** for the 268 Vista by VOLVO PENTA, guiding you from first contact through closing. Contact **Andrey Shestakov** to begin.

Owner Experience Review

Owners most often describe the 268 Vista as a family oriented express cruiser that fits weekend escapades: short overnights using a modest cabin and basic galley, plus ample capacity for day runs and near shore outings. It's frequently used for light fishing and bay cruising, reflecting a leisure focused profile rather than commercial charter operation.

Underway performance with the VOLVO PENTA 5.7 GXi duoprop is commonly reported at roughly 25 knots cruising and a top end near 38 knots, with brisk acceleration. Handling is described as solid for a 26-foot express in moderate chop, responsive when properly trimmed. That said, some owners note quirks such as difficulty getting on plane or RPM/throttle inconsistencies that can be traced to linkage or fuel system adjustments.

Belowdecks, the cabin is compact but functional for weekend use, featuring a V berth, enclosed head, and a small galley. Cockpit seating, helm layout, and storage tend to receive positive comments, although older examples may show wear. A number of owners have reported issues with water ingress or

standing bilge water and occasional drainage or condensation problems. Maintenance experiences vary: common recurring themes in owner forums include fuel system problems (notably “fuel starved” conditions and squealing pumps on some 2000–2003 boats) and idle/throttle irregularities, while other owners report reliable starts when the vessel is well cared for. Recommended routine checks by owners include inspection of exhaust elbows, outdrive bellows and gear oil, and bilge drain integrity.

Pros and Cons

- Weekend oriented interior with V berth, enclosed head, and compact galley that accommodate small crew overnight stays.
- Nimble handling in moderate chop with strong acceleration; typical cruise around 25 knots and a top speed near 38 knots with the VOLVO PENTA 5.7 GXi duoprop.
- When maintained correctly, many owners report dependable starting and overall reliability.
- Early 2000s boats have been associated with fuel system issues, including instances of fuel starvation and noisy pumps.
- Some boats exhibit rough idle, RPM irregularities, or reluctance to plane that may be linked to throttle linkage or fuel system tuning.
- Reports of water ingress or standing bilge water and drainage/condensation concerns, particularly on older examples.

Comparison with Other Models

Model	LOA	Beam	Draft	Speed (Cruising/Max)	Gross Tonnage
4300 Sovran	45' 0" (13.79 m)	14' 0" (4.50 m)	11' 9" (3.58 m)	27 kn / 34 kn	
268 Vista	28' 0" (8.56 m)	8' 0" (2.56 m)			

SPECIFICATIONS

LOA:

28' 0" (8.56 m)

Water Capacity:

20 Gallons

Engines:

1

Engine Type:

I/O

Beam:

8' 0" (2.56 m)

Fuel Capacity:

85 Gallons

Manufacturer:

Volvo Penta

Fuel Type:

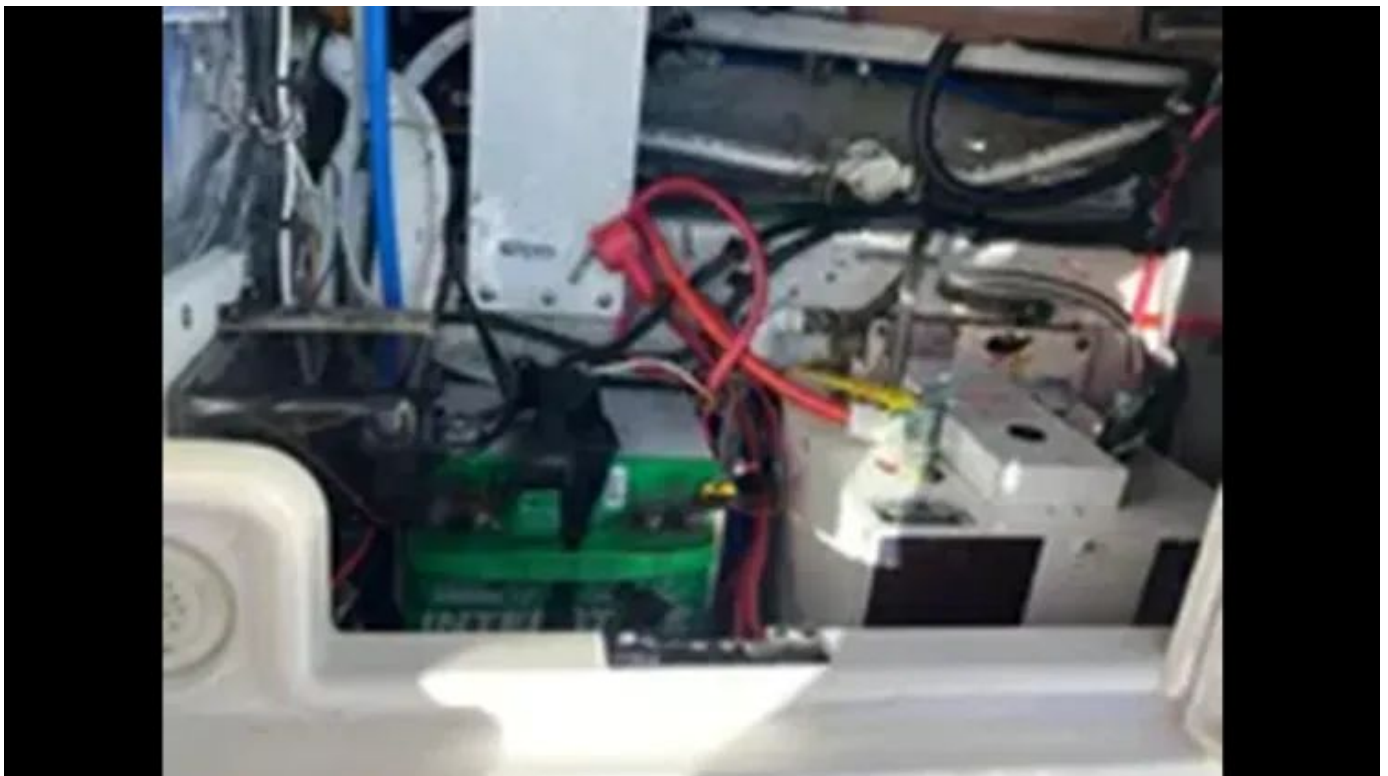
Gas

GALLERY











CONTACTS

Shestakov Yacht Sales is a brokerage company specializing in the sale and service of yachts worldwide. The company offers services for buying and selling both new and used motor yachts, sailing vessels, and luxury superyachts. They also provide yacht registration, insurance, technical maintenance, crew selection, and charter organization services across the U.S., Canada, Latin America, the Caribbean, and the Bahamas.

The founder and lead broker of the company is Andrey Shestakov, a licensed and certified expert with extensive experience in marine engineering and shipbuilding.

The company has an extensive network of partnerships with major yacht manufacturers worldwide and provides services in multiple languages, including Russian, Ukrainian, Spanish, and English. The office is in Dania Beach, Florida, USA.

For more information and to view available yachts, you can visit the company's official website: <https://shestakovyachtsales.com>

Contact details

Phone: +1(954)274-4435

Email: andrey@shestakovyachtsales.com

Address



1380 Weeping Willow Way, Hollywood,
Florida 33019