

## EUPHORIA - HORIZON YACHTS



**Builder:** [Horizon Yachts](#)

**LOA:** 100' 0" (30.63 m)

**Year Built:** 2012

**Beam:** 21' 0" (6.55 m)

**Model:** RP97

**Max Draft:** 18' 4" (5.58 m)

**Price:** \$3,109,079.21 USD Subject to change.

**Cruising Speed:** 15 Knots (17.26 MPH)

[See full listing on our website](#)

**Location:** Gold Coast, Australia

**Max Speed:** 22 Knots (25.32 MPH)

---

# TABLE OF CONTENTS

---

<b>OVERVIEW .....</b>	<b>3</b>
<b>SPECIFICATIONS .....</b>	<b>4</b>
Basic Information .....	4
Dimensions .....	4
Speed, Capacities and Weight .....	4
Accommodations .....	5
Hull and Deck Information .....	5
Engine Information .....	5
<b>GALLERY .....</b>	<b>6</b>
<b>DETAILED DESCRIPTION .....</b>	<b>14</b>
<b>CONTACTS .....</b>	<b>17</b>

## OVERVIEW

---

EUPHORIA marries celebrated craftsmanship with generous interior volume and a long list of recent enhancements, marking her as a premier Horizon RP97 on the market. This raised pilothouse motor yacht and flybridge yacht delivers a rare combination of performance, comfort, and lifestyle amenities, presented turn key for immediate cruising. A comprehensive service and refit schedule, with notable attention in 2024, includes a complete haul out with fresh antifouling, PropSpeed application, and new anodes, alongside mechanical renewals such as a replacement generator, overhauled coolant pumps, refreshed freshwater systems, and increased hot water capacity. Further thoughtful refinements to the ship's systems, installation of premium appliances, and the addition of a flybridge spa reflect meticulous, forward looking stewardship. A detailed record of works is available on request, confirming a luxury yacht with superyacht sensibilities, ideally equipped for bluewater cruising.

# SPECIFICATIONS

---

## Basic Information

---

**Category:**  
Motor yachts

**Year Built:**  
2012

**Model Year:**  
2012

**Country:**  
Australia

## Dimensions

---

**LOA:**  
100' 0" (30.63 m)

**Max Draft:**  
18' 4" (5.58 m)

**Beam:**  
21' 0" (6.55 m)

## Speed, Capacities and Weight

---

**Cruise Speed:**  
15 Knots (17.26 MPH)

**Water Capacity:**  
501.93 Gallons

**Max Speed:**  
22 Knots (25.32 MPH)

**Fuel Capacity:**  
4094.67 Gallons

## Accommodations

---

**Sleeps:**

8

**Crew Cabin:**

2

**Total Heads:**

5

**Crew Berths:**

4

## Hull and Deck Information

---

**Hull Material:**

Fiberglass and Plastic Yachts

**Hull Designer:**

N/A

**Deck Material:**

GRP

**Interior Designer:**

N/A

**Hull Configuration:**

Monohull

## Engine Information

---

**Engines:**

2

**Engine Type:**

Inboard

**Manufacturer:**

Caterpillar

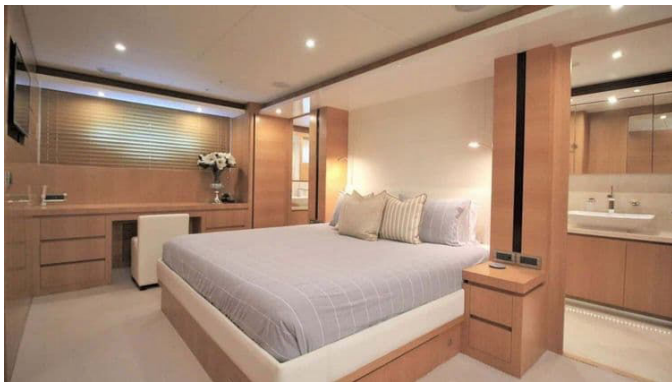
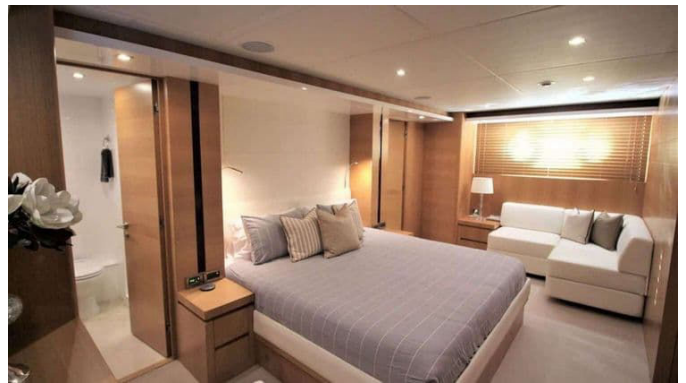
**Fuel Type:**

Diesel

# GALLERY



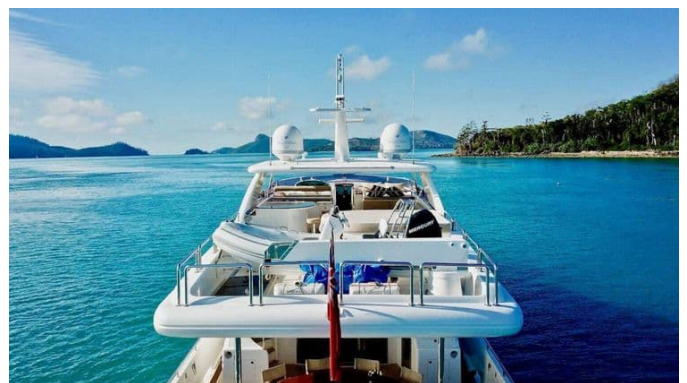














---

# DETAILED DESCRIPTION

---

## Euphoria description

---

A standout yacht that combines proven offshore capability with exceptional onboard volume and a comprehensive program of recent upgrades, EUPHORIA is now offered with a significant price improvement—an enticing opportunity to acquire a highly specified, turnkey motor yacht in this sought-after size range. Built by Horizon Yachts, she embodies the yard's renowned commitment to quality, engineering integrity, and refined design. Her semi-displacement hull form delivers impressive versatility, enabling efficient long-range cruising at 10–12 knots while maintaining the ability to exceed 21 knots when desired. Equally at ease on relaxed coastal passages or more ambitious itineraries to the Great Barrier Reef and across the wider Pacific, she also benefits from a substantial 15,500-litre fuel capacity that extends her range and reduces dependence on frequent refuelling. Powered by twin 1,600 hp Caterpillar C32 engines, EUPHORIA delivers confident, reliable performance supported by thoughtful engineering and a strong maintenance history. TRAC fin stabilisers elevate comfort both underway and at anchor, ensuring a composed experience for owners and guests alike. Inside, EUPHORIA presents an interior that is at once elegant and inviting. High satin oak timber is paired with refined leather accents to strike a harmonious balance between timeless sophistication and relaxed luxury. The main saloon is the social heart of the yacht, with generous seating, a formal dining area, and a fully equipped bar complete with wine cooler and icemaker, while expansive panoramic windows bathe the space in natural light and strengthen the connection to the sea. Modern technology enhances life on board throughout. Recent upgrades include Starlink connectivity and new televisions, delivering seamless communications and entertainment wherever the voyage

leads. Paired with premium European appliances and updated soft furnishings, these enhancements position EUPHORIA as a contemporary, highly functional living space on the water. Outdoor living is where EUPHORIA truly excels. Her expansive decks are designed for enjoyment in all conditions: the aft deck sets the scene for alfresco dining with a wet bar, refrigeration, and an icemaker; the foredeck offers a versatile lounge and dining area that easily converts into a sunpad; and above, a fully customised flybridge becomes the ultimate entertaining hub with abundant seating, a BBQ, wet bar, jacuzzi, and sun lounges—perfect for spirited gatherings or tranquil afternoons at anchor. Accommodation is thoughtfully arranged for up to eight guests across four well-appointed cabins. The full-beam master suite is a private, spacious retreat with elegant finishes and a generous ensuite, complemented by a forward VIP stateroom and twin cabins to port and starboard that are ideal for family or additional guests. A conveniently located day head on the main deck enhances everyday practicality. Separate crew quarters for up to four, with dedicated facilities and a laundry, ensure smooth operations and privacy on extended cruises. EUPHORIA's extensive specification underscores her credentials as a serious cruising yacht. A hydraulic swim platform with integrated sea stairs, bow and stern thrusters, a passerelle, underwater lighting, and a premium Furuno navigation suite—upgraded in 2024 with new bridge screens, autopilots, and VHF systems—combine to make operations intuitive, while a third control station and a comprehensive CCTV system further elevate safety and usability. Importantly, EUPHORIA has benefitted from a significant program of maintenance and upgrades, particularly in 2024. Highlights include a full haul-out with antifouling, PropSpeed, and anode replacement; mechanical works such as a new generator, coolant pumps, freshwater systems, and hot water upgrades; plus additional enhancements to onboard systems, appliances, and the flybridge spa. A full summary of works is available upon request. Blending pedigree build quality, impressive volume, and a long list of thoughtful upgrades, EUPHORIA stands out as one of the most

compelling Horizon RP97s currently on the market. She delivers on every level—performance, comfort, and lifestyle—and is presented in turnkey condition for immediate enjoyment. Inspection is highly recommended.

# CONTACTS

---

Shestakov Yacht Sales is a brokerage company specializing in the sale and service of yachts worldwide. The company offers services for buying and selling both new and used motor yachts, sailing vessels, and luxury superyachts. They also provide yacht registration, insurance, technical maintenance, crew selection, and charter organization services across the U.S., Canada, Latin America, the Caribbean, and the Bahamas.

The founder and lead broker of the company is Andrey Shestakov, a licensed and certified expert with extensive experience in marine engineering and shipbuilding.

The company has an extensive network of partnerships with major yacht manufacturers worldwide and provides services in multiple languages, including Russian, Ukrainian, Spanish, and English. The office is in Dania Beach, Florida, USA.

For more information and to view available yachts, you can visit the company's official website: <https://shestakovyachtsales.com>

## Contact details

---

**Phone:** +1(954)274-4435

**Email:** [andrey@shestakovyachtsales.com](mailto:andrey@shestakovyachtsales.com)

## Address

---



1380 Weeping Willow Way, Hollywood,  
Florida 33019