

ALL OCEAN YACHTS 100' FIBERGLASS - ALL OCEAN YACHTS



Builder: [ALL OCEAN YACHTS](#)

LOA: 100' 0" (30.48 m)

Year Built: 2027

Beam: 24' 0" (7.52 m)

Model: Tri- Deck Explorer Yacht

Min Draft: 24' 1" (7.33 m)

Price: \$10,500,000 USD Subject to change.

Max Draft: 26' 3" (8 m)

[See full listing on our website](#)

Location: N/A, China

Cruising Speed: 10 Knots (11.51 MPH)

Max Speed: 13 Knots (14.96 MPH)

TABLE OF CONTENTS

OVERVIEW	3
SPECIFICATIONS	5
Basic Information	5
Dimensions	5
Speed, Capacities and Weight	5
Accommodations	6
Hull and Deck Information	6
Engine Information	6
GALLERY	7
DETAILED DESCRIPTION	11
CONTACTS	27

OVERVIEW

Commanding and purposeful, this 100-foot expedition motor yacht is conceived for true bluewater wanderlust and refined living in equal measure. Built in China on a displacement hull with a bulbous bow, she marries steadfast seakeeping with quiet efficiency, settling into an effortless 10-knot passage and reserving up to 13 knots when needed. Twin Caterpillar inboard diesels sip from a vast 9,800-gallon fuel reserve, complemented by 3,000 gallons of fresh water, granting the autonomy to roam far beyond the horizon. Her broad 24-foot beam yields remarkable volume, while the option to specify advanced fiberglass composite construction—or commission her in steel—underscores a bespoke approach to strength, durability, and mission profile. With a thoughtful 24-month new-build schedule and a 2027 delivery, she stands at the nexus of capability and craft.

Inside, Luiz deBasto curates an atmosphere of contemporary elegance, where clean lines and natural light heighten a sense of calm, and every journey feels effortlessly elevated. Expansive living areas are arranged with the practical grace demanded of Expedition Yachts, balancing private retreats with convivial lounges that frame the sea. Six beautifully finished heads ensure comfort for owners and guests alike, while well-separated service areas and three crew cabins for four support discreet, professional hospitality on extended passages. The fiberglass deck invites easy movement and purposeful outdoor living, from morning coffees underway to starlit dinners at anchor—proof that rugged capability and luxurious ease can share the same horizon.

A yacht of this caliber is an invitation to shape the details around your life at sea. From material selections to interior nuances and long-range outfitting, the build team guides a personalized journey toward ownership. For those seeking a world-ready Motor Yacht that confidently bridges expedition-grade performance with timeless style, this new-construction 2027 offering delivers

an alluring blend of autonomy, artistry, and assurance—crafted for exploration, composed for comfort, and destined to travel far.

SPECIFICATIONS

Basic Information

Model Year:
2027

Country:
China

Year Built:
2027

Dimensions

LOA:
100' 0" (30.48 m)

Beam:
24' 0" (7.52 m)

Min Draft:
24' 1" (7.33 m)

Max Draft:
26' 3" (8 m)

Speed, Capacities and Weight

Cruise Speed:
10 Knots (11.51 MPH)

Water Capacity:
3000 Gallons

Max Speed:
13 Knots (14.96 MPH)

Fuel Capacity:
9800 Gallons

Accommodations

Total Heads:

6

Crew Berths:

4

Crew Cabin:

3

Hull and Deck Information

Hull Material:

Fiberglass and Plastic Yachts

Hull Designer:

N/A

Deck Material:

Fiberglass

Interior Designer:

Luiz deBasto

Hull Configuration:

Displacement w Bulbous Bow

Engine Information

Engines:

2

Engine Type:

Inboard

Manufacturer:

Caterpillar

Fuel Type:

Diesel

GALLERY



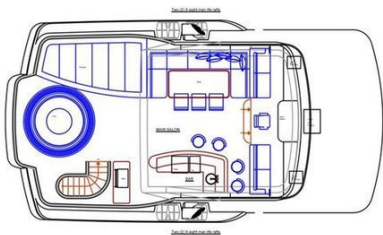




STANDARD LAYOUT "MONACO" WITH OPTIONAL AND OWNER SUPPLIED ITEMS



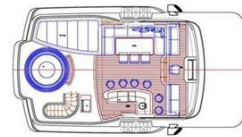
STANDARD LOWER DECK LAYOUT WITH OPTIONAL AND OWNER SUPPLIED ITEMS



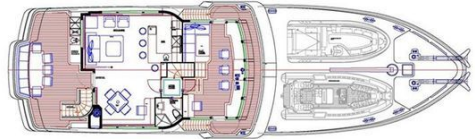
STANDARD LAYOUT WITH OPTIONAL AND OWNER SUPPLIED ITEMS

ALL OCEAN 100'

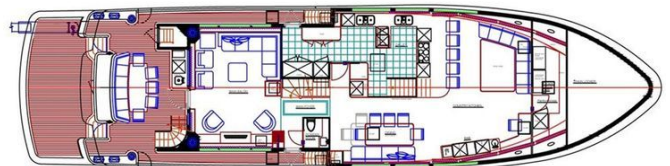
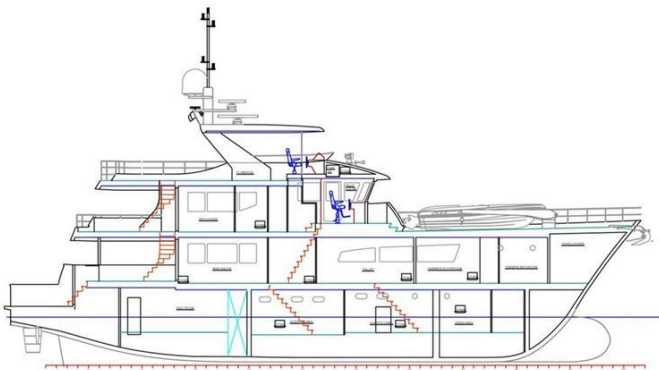
LUIZDEBASTO
DESIGNS



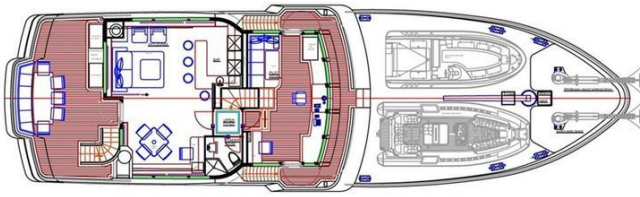
FLYBRIDGE



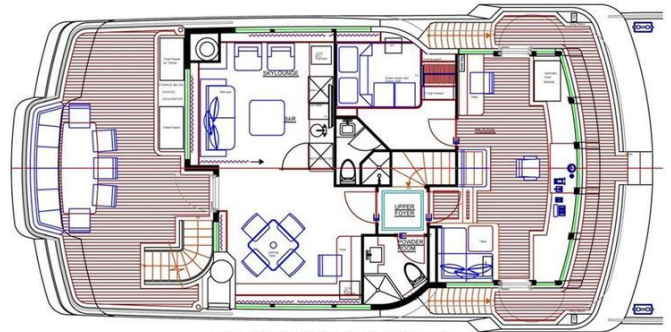
SUPER DECK



ALL OCEAN YACHTS 100' OPTIONAL COUNTRY KITCHEN LAYOUT with Master behind wheelhouse option



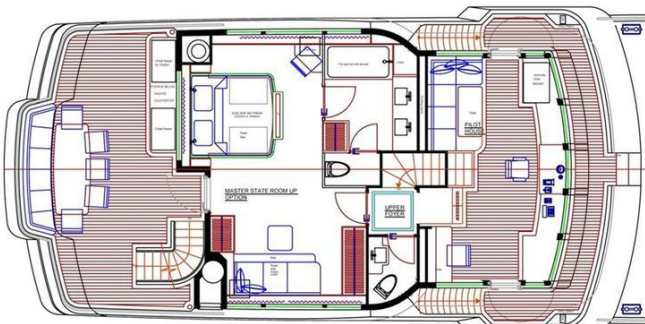
STANDARD BRIDGE DECK SKYLounge LAYOUT WITH OPTIONAL AND OWNER SUPPLIED ITEMS



CAPTAIN'S CABIN UP OPTION



Owner Up / Forward TV Lounge & Office / Aft Bar / Gaming Room



Owner Behind Wheelhouse Layout Tub / Shower



MAIN DECK



LOWER DECK

DETAILED DESCRIPTION

Introduction

Forged from over 38 years of world cruising command and brokerage experience, the All Ocean Yachts line evolved through an open, iterative process, its design refined at every stage by public review from yacht professionals and yacht owners. Their feedback shaped a sophisticated, exquisitely detailed yacht that fulfills every criterion a World Cruising Explorer Yacht should embody. The mission profile of the All Ocean Yachts Explorer is clear: to be a vessel capable of extended and remote world cruising in safety and comfort, able to visit exotic regions with little shoreside support and requiring a minimum of operational upkeep. A diverse array of layouts allows the All Ocean Yachts Explorer to be tailored to your requirements without resorting to a custom design, and her 3,000-plus sq ft of indoor and outdoor living space offers expansive areas for truly comfortable living. Guest and crew domains enjoy a very high degree of separation, with thoughtfully planned service areas that enable the crew to move seamlessly throughout the vessel, delivering top notch service while preserving distinct, private spaces for all. The All Ocean Explorer is ready to take you wherever you desire in safety and comfort.

Accommodations

Inspired by the enthusiastic response from yachtsmen, owners, and industry professionals, we refined a standard layout complemented by several optional arrangements to satisfy every request we received. The lower deck remains consistent across all configurations, with the flexibility to add Pullman berths and sliding single bunks that seamlessly convert into doubles. On the main deck, the standard plan features the master cabin forward and an enclosed

galley. An alternative arrangement mirrors this design but introduces a sliding panel between the galley and dining area to create an open-galley format, along with a thoughtful reconfiguration of one refrigerator, the oven layouts, and the china cabinet to deliver a fully open, sociable ambiance.

Both of these main-deck layouts can be specified with the Captain's cabin up option, enabling accommodation for up to six crew or providing a dedicated cabin for fishing guides, scuba guides, or other additional personnel. This configuration preserves a comfortable skylounge, and with its convertible settee plus a full head and shower, it grants a true fifth stateroom.

Further possibilities unfold with the Master Cabin Up option, which situates the master suite just aft of the wheelhouse. Remarkably, this arrangement retains virtually all the amenities of the main-deck master, including equivalent storage volume and generous hanging locker space, with the added choice of a tub and shower combination and a private toilet room. Elevating the master then opens several compelling options for the main deck: you may select a large TV lounge with a fold-out queen settee and a full head, maintaining your fifth guest capability, and this in turn can free the aft saloon to become a bar and game room or remain as a traditional saloon to create two distinct lounging areas, while also providing a large office area. Alternatively, you can opt for a full country kitchen featuring an extra-large additional pantry and an informal dining and breakfast table, all while preserving a separate formal dining area and, once again, enjoying a well-proportioned office space.

Accommodations walkthrough

Beginning on the lower deck forward, the crew's quarters set a thoughtful tone for extended cruising. To port, the captain's cabin offers a double bunk with drawers beneath, a full-height hanging locker with additional drawers below, a side table with drawers, storage shelves, and a TV. Forward lies an ensuite head with shower, toilet, and sink, and there is provision to add a second bunk

should mission profiles demand it. To starboard, a crew cabin features upper and lower bunks, two hanging lockers, a chest of drawers, and further storage in drawers beneath the lower bunk. A forward head mirrors the captain's, and both heads incorporate escape hatches while both cabins are equipped with TVs. Moving aft through a watertight door, a corridor leads to stairs rising to the galley, while to port a doorway opens into the crew lounge and onward to the separate laundry room.

Designed for flexibility, the crew lounge presents a large settee with a table that folds down to create a generous additional bunk, ideal when extra crew or a fishing or diving guide is embarked. By day they can utilize the crew head and at night the main deck head, while the settee conceals storage beneath. The lounge is further outfitted with an under-counter refrigerator, sink, microwave oven, and a TV/monitor. Aft, the full-size laundry provides extensive storage and work surfaces, including ample counter space for pressing machines and an ironing board, and it houses two full-size LG washers and two full-size LG ventless dryers. An overhead hatch is sized to allow removal of these machines, and a discreet service door from the laundry to the guest areas enables the crew to service cabins and manage housekeeping without interrupting guest privacy.

Guest accommodations on the lower deck consist of two double staterooms, each with two lower full-size single bunks and ensuite heads with showers. Both staterooms may be specified with Pullman berths, and the inboard bunk can slide outboard to form a queen bed against the hull side. Each cabin includes a large hanging locker with drawers, additional drawers beneath each bed, and further storage under the stairs. Both staterooms are fitted with escape hatches. Forward to starboard, a full walk-around queen guest cabin offers a large hanging locker with drawers, more drawers beneath the bed, and an ensuite head with shower. The bulkhead separating the laundry and queen stateroom from the twin staterooms is watertight, and both the queen cabin and the laundry have two sets of doors: a conventional door and a

pocketed watertight door. Centerline stairs rise from the aft lower foyer to the main deck foyer.

The main deck foyer gracefully divides the aft main saloon from the formal dining area and provides access to a side deck, the day head, and a wet locker. Forward on this deck in the standard arrangement is the full-beam master stateroom, illuminated by two large windows that flood the space with natural light and accentuate the volume afforded by the 24'2" beam. Upon entry, a 7' L-shaped settee to starboard nestles beneath the windows for a serene connection to the seascape, while a king-size bed sits just off the centerline to port with a built-in pop-up TV at its foot. Drawers are concealed beneath the bed, and a large desk fronts the portside windows. Forward of the bed, matching walk-in closets to port and starboard provide hanging space and drawers. The expansive centerline head includes his-and-her sinks, an oversized shower, and a separate toilet room with bidet, as well as a third stacked washer-dryer and a linen closet. For privacy and protection, a steel bulkhead with sound insulation separates the master from the galley and dining area, and an escape hatch provides direct egress from the master to the boat deck.

Aft of the master to starboard, the separate dining room seats eight to ten guests and enjoys direct service from the large, commercial-style galley, with two generous windows ensuring an airy ambiance. Purpose-built for gourmet preparation and refined service, the professional galley is divided into distinct work zones. The chef's area features expansive counters, a 6 burner cooktop with vent, a full-size refrigerator, two ovens, a standard dishwasher, a double sink with disposal, and a microwave oven. The stewardess's zone includes a full-size refrigerator, a double freezer, a trash compactor, a double sink with disposal, and a 3 minute dishwasher. Granite countertops run throughout. A large pantry serves the stewardess area, and a china cabinet/pantry near the galley-saloon doorway houses the wine cooler and is ingeniously configured with dual doors so china can be stocked from the galley side and retrieved

from the dining saloon side. A side deck door off the galley streamlines provisioning and service.

Crew circulation has been meticulously engineered: the stairs from the crew's quarters land directly in the galley, enabling movement to all exterior decks and the pilothouse without crossing into guest spaces. Steps to the pilothouse are positioned near the galley's saloon door so crew can transition swiftly with minimal intrusion. This thoughtful separation empowers seamless service and maintenance during every mode of operation and supports efficient owner-operator use with a limited crew or with friends and family.

Aft of the main foyer, the main saloon welcomes up to ten guests with a large L-shaped settee, comfortable chairs, and a pop-up TV. Expansive windows bathe the area in light, creating a refined setting for conversation and relaxation. Beyond, the aft deck presents the first of three outdoor dining and lounging venues, complete with a table for eight to ten, a wet bar with sink, refrigerator, and trash bin, and stairs down to the swim platform offering access to the lazarette and engine room. There is also a direct door from the aft deck to the engine room and stairs up to the aft bridge deck, while the side walkways lead forward to steps ascending to the pilothouse and boat deck. For secure line handling, port and starboard aft corners carry two cleats and a warping windlass mounted on raised shelves that improve ergonomics and sightlines to the dock and cleats; the main deck's lower cleats are likewise raised for the same safety and ease-of-use benefits.

Forward on the pilothouse and boat deck, the anchor handling well brings all cleats and ground tackle to a raised, contained working zone. Windlasses and chain rest in a stainless steel tray with dedicated drains, and the well's form captures any green water shipped over the bow to protect the tenders while keeping the chain-locker hatch high above deck level. Just aft, the boat deck—remarkably generous for a 90' vessel—can carry two 22' (6.6m) tenders or a large tender plus a smaller one, along with other watercraft. Three steps

up, the Portuguese bridge offers wing stations to port and starboard set outboard for greater visibility and ease of handling, and wide entries port and starboard usher you into the capacious pilothouse. Elevated above the boat deck for clear sightlines over tenders and foredeck, the helm console provides abundant real estate for electronics and controls, while chart tables to port and starboard accept full-size standard Admiralty charts. A raised settee to port, paired with a granite-topped table, is sized to serve as a pilot berth as needed, and to starboard aft a large desk and radio area keep communications organized. The space beneath the raised pilothouse floor houses radio and navigation batteries and chargers, wire raceways, air ducts, and ancillary equipment, freeing up vital volume beneath the console.

Aft and down two steps lies the upper foyer, with the staircase from the dining saloon to port and a second day head with shower to starboard. Doors separate the foyer from the wheelhouse and skylounge, ensuring night operations proceed without impacting guest comfort. The skylounge itself is expansive, nearly full-beam with panoramic windows on three sides. To port, a full stand-behind bar with bar stools, a granite top, wine cooler, icemaker, refrigerator, and sink serves as a convivial focal point, while aft a settee and chairs invite relaxation; the settee folds out to a queen bed, and paired with the full head this space readily converts into a fifth guest stateroom. To starboard, a gaming table area and a built-in desk provide versatile utility, and the forward bulkhead between the door and bar accommodates a 47" TV. Aft, the second outdoor lounging and dining area spans a balcony with a table for eight to ten and a settee proportioned for both dining and sun lounging, with ample room for chaise longues. Forward to port, a large cabinet houses two additional chest freezers—one dedicated to food and the other to trash—an essential feature for long-range cruising. By compacting waste in the galley and freezing it, you can store it hygienically until a proper disposal facility is reached, with additional storage in this unit for deck gear.

Ascending from the aft pilothouse deck, the extravagantly large flybridge

reveals the third al fresco dining and lounging zone. Aft, the Jacuzzi is perfectly positioned beside the balcony to capture sweeping views, while to port an oversized raised sun pad elevates guests for easy conversation with those in the spa and creates a vast storage volume below. To starboard, a BBQ with cabinet and ample counter space to either side supports effortless entertaining, and just forward a full bar with refrigerator, a second icemaker, sink, and storage faces a large dining table that comfortably seats ten to twelve. Two steps up, a raised helm and seating area offers port and starboard settees sized for use as shaded daybeds, and the centerline helm affords commanding visibility and space for all controls and equipment beneath the protection of the hard top.

A range of optional layouts tailors the yacht to individual preferences. A captain's cabin can be added behind the wheelhouse with only minor reconfiguration: in the wheelhouse, the large settee is divided into a starboard corner settee and a raised seat behind the helm, while the desk moves to port and grows in size. The captain's cabin itself features a queen-size bed, a large hanging locker with drawers in front, and a full head with shower. In the skylounge, the stand-behind bar is replaced by a full wet bar retaining all the original equipment, and the fold-out queen berth remains.

With the master on the main deck, an open galley option transforms the bulkhead between the dining saloon and galley into a permanent opening with a railing along the crew access stair, or into a half-height partition concealing a sliding panel. The latter is preferred for containing aromas and noise during cleanup. In this arrangement, the full-height refrigerator and stacked ovens are re-specified as under-counter units, while the china cabinet stops at counter height and a second cabinet above conceals a fold-down panel that can fully close the galley.

Alternatively, an owner's cabin can occupy the space behind the wheelhouse with no changes required to the wheelhouse layout. Although this design omits

walk-in closets, the total hanging and drawer volume is effectively unchanged. The king-size bed remains, complemented by a large raised settee to starboard. The master head provides his-and-her sinks, a separate toilet room, and either an extra-large shower or a full-size tub (Jacuzzi) and shower combination. In this configuration, the aft pilothouse deck becomes the owner's private terrace, and—depending on the chosen main deck plan—the two freezers are moved down to open more room for comfortable lounge seating.

Selecting the owner's cabin up creates three compelling main deck arrangements. The country kitchen concept yields three distinct dining venues: the standard formal table to starboard of the galley, a large informal table that readily accommodates all guests and crew, and a breakfast bar. A full wet bar mirrors the flybridge bar's equipment, and a generous desk or office area enhances utility. A very large forward pantry absorbs the two freezers from the pilothouse deck and the full-size refrigerator. The trade-off is the loss of one galley oven, mitigated by a full-size convection microwave and the addition of an under-counter refrigerator for the chef alongside the full-size refrigerator in the pantry. This layout removes the option of creating a fifth stateroom from a fold-out settee while preserving the main saloon as per the standard plan. For a more media-centric approach, a TV and reading lounge can be specified forward with either the closed or open galley. This arrangement creates a spacious U-shaped settee with a pull-out queen bed, a full head with shower, and a large closet; a 62" TV mounts on the forward bulkhead, while to starboard a large desk or office area pairs with a raised window settee. To port, choose between a full wet bar or a drinks refrigerator, and aft retain the standard saloon or adopt a third alternative: converting the aft saloon into a bar and game room with a large sit-down bar served directly from the galley, fully equipped to skylounge standards and complemented by a sizable gaming table and plush seating.

Built to:

Located at the shipyard, this tri-deck explorer yacht model, classified as an explorer yacht, is conceived by designer Luiz deBasto with both the interior and exterior by Luiz deBasto Design. The accommodations plan offers four or five staterooms and four or five berths, supported by crew quarters for two or three and a dedicated captain's cabin. Purposeful and efficient, it delivers a speed of 9.5 to 10 knots.

Hull characteristics

Crafted in marine-grade fiberglass, this yacht showcases purposeful proportions with a length overall of 100 feet or 26.3 meters, a length on deck of 94 feet or 28.6 meters, and an approximate length on the waterline of 88 feet or 26.8 meters. Her molded beam spans 24 feet 2 inches or 7.315 meters, and at fifty percent load—carrying 4,580 gallons of fuel and 1,500 gallons of fresh water—she draws 7 feet 6 inches or 2.29 meters. Displacement is approximately 220 metric tons at one hundred percent fuel and one hundred percent water, with a light-ship displacement of approximately 179 metric tons. At half load she is designed to cruise at 10 knots, and at one hundred percent engine load on a continuous rating at half load she achieves 10.5 knots. Fuel oil tankage is approximately 9,800 gallons, while fresh water tankage is approximately 3,000 gallons, equivalent to 11.3799 metric tons; lube oil tankage totals 120 gallons or 0.51 metric tons, matched by 120 gallons or 0.51 metric tons of contaminated oil tankage. Waste capacities are equally robust, with a black water tank of 427 gallons or 2.5 metric tons and a grey water tank of 427 gallons or 2.47 metric tons. At 9.5 knots, she offers a range of 4,000 nautical miles.

Hull subdivision

The vessel's hull is meticulously subdivided by transverse and longitudinal watertight and/or oil-tight bulkheads, as shown on the contract drawings, into the following purposeful compartments: the forepeak; fresh water tanks; crew's quarters; guest stateroom three with the crew lounge and laundry compartment; the guest staterooms one and two compartment; fuel oil tanks; the engine room; and the steering gear compartment and lazarette.

Hull structure

Meticulously designed and engineered by High Modulus, this hull structure reflects a commitment to precision and enduring quality, delivering a refined foundation that inspires confidence at sea and elevates the yacht's overall performance and poise.

Major equipment list and systems

Power comes from two Caterpillar C18 Electronic main engines, A-rated at 450 BHP at 1800 RPM, each with a deep-sump oil pan and 24-volt electric start, turning through two Twin Disk 3.50.1 reduction gears with velvet drive. The drivetrain is built on two four-inch-diameter Aqualoy 17 stainless-steel shafts and a matching pair of bronze five-blade propellers—one right-hand and one left-hand—while directional authority is assured by two wing-shaped, semi-balanced rudders. All reciprocating machinery is mounted on resilient vibration-damping mounts, and both mains and generators exhaust through a Centek water-wash system. Fire protection is provided by Kidde-Fenwal CO2 or Optec International water-mist systems. Precision engine control comes via Kobelt with SPA 10590 remote, and Kobelt also supplies the hydraulic steering system and pumps. For confident maneuvering, an American Bow Thruster 65

HP unit stands ready.

Ground tackle is equally robust, with two 200 kgs CQR-type anchors, each served by two 137 meters lengths of 5/8 stud-link chain, managed by two Maxwell VWC6000 windless units with foot controls and remote control. A stainless chain guard protects the bow, and chain counters are fitted in the wheelhouse. Climate control is delivered by one Aqua Air Series Model A12-2-2 HC with soft starts and a total capacity of twelve tons, governed by Tempwise 2000 fan controls and supported by two raw-water pumps. Quantum Marine Zero Speed stabilizers ensure comfort both underway and at anchor. The engine room breathes through two fans with variable speed and reversing controls.

Tank management includes self-closing sight glasses or dip sticks on all tanks, complemented by a Tank Tender or similar electronic system. Sanitation is handled by the Head Hunter black water system, and the black and grey water architecture features Head Hunter toilets, two diaphragm pumps for black and grey interlinked, and dedicated holding tanks for both black and gray water. Deck equipment includes a Steel head or Aritex marine crane rated to two tons, and an Aritex or similar fully retracting hydraulic passarelle. A Buell quad pneumatic air horn with auto fog system ensures clear signaling.

Raw-water supply is ensured by two sea chests with a crossover pipe feeding all seawater systems. All sea-water piping is CuNi, and each system benefits from individual sea strainers. The bilge arrangement comprises both AC and DC power systems, with the AC circuit backed up by the fire-main system.

Fuel capacity is distributed across four tanks, including a day tank, for approximately 9,160 US gallons (34,800 liters). Fuel quality is maintained by an Alfa Laval MiB 303 fuel-cleaning system, with two Racor fuel filters, Mod 75-1000MA, for the main engines and two Racor Mod 1000 single filters for the generators. Transfer is handled by a Blackmer series molel 414-414A electric pump and one manual pump. The lube and dirty oil system includes one 120

US gallon (456 liters) clean oil tank, one 120 (456 liters) dirty oil tank, and two Oberdorfer AC pumps hard-plumbed into the system.

Potable water provisioning features two 800 gpd desalination units with auto back-flush, a sand filter, and two pressure sets by Water Maker Inc, 3/4 Hp AC, with a 36-gallon pressure tank. Domestic hot water is supported by a hot-water circulating pump, two 50 US gallon (190 liter) hot water heaters, two Aqua-Pure drinking-water filters, one UV filter, and one pressure-reduction valve. On deck, there are four fresh-water outlets and two fresh-water showers. Compressed air is supplied by a one and one-third horsepower model 3 C-2425252D with a 2.5-gallon reserve tank, with outlets in the engine room and on the foredeck.

Shore power versatility arrives via an Atlas 45 KVA power converter, two 100-amp Glendening cable systems, and two 150' lengths of 100-amp cord. The main switchboard is an Atlas panel with seamless transfer, paired with a Trace inverter with Link 4000. As much as practical, all ship's lighting is LED. The low-voltage architecture comprises 24-volt main-engine starts with two banks of 8D batteries and a paralleling system; generator starts at 12 volts with two banks of 8D batteries and paralleling; electronics powered by four 12-volt 8D batteries configured into two banks of 24 volts; a house bank of two 8D batteries for 24 volts; and chargers including one 60-amp and two 40-amp units. Navigation lights are Aqua Signal 55 Series LED, corrosion is tracked by an Engelhard Monitor, and underwater ambiance is enhanced by five LED lights.

On the bridge, five electric windshield wipers—one serving each of the five center windows—are Exalto/Vetus 295M pantograph units with integral washers or equal, fitted with stainless-steel arms. Direction-finding is by two Danforth 5" Constellation compasses or similar. The pilothouse is appointed with one bench settee seat per designer's drawings topped by a granite table and one centerline helm seat as specified.

Allowances for All Ocean Yachts Explorer

Tailor your explorer with comprehensive allowances that elevate every finish and system. Carpet and pad are budgeted at \$44 per yard, while granite flooring and countertops are set at \$110 per square meter. For interior settees, select premium fabric and/or Brazilian leather at \$40 per square yard, with window treatments allocated \$12,000. Wall panels and overhead materials, including Marjilite, are budgeted at \$40 per square yard. An electronics allowance of \$180,000 is included, with a list of equipment to be provided, complemented by a \$6,000 yard installation of electronics. Entertainment systems carry a \$25,000 allowance, with a list of equipment to be provided, purchased in Brazil. Light fixture costs are precisely defined throughout: interior light fixtures for the lower accommodations are \$30; for the main deck except the galley, \$40; for the galley, \$30; for the upper deck, \$30; and for crew areas, \$30. Exterior light fixtures are \$42. A crew tender built in Brazil is budgeted at \$25,000, with the owner tender at \$55,000. All white goods on board are allocated \$35,000, including washers, dryers, galley equipment, and exterior equipment. Hardware allowances include \$36,000 for all plumbing and bath fixtures and \$15,000 for all interior hardware. Owner-supplied items, to be purchased in the country of the builder, comprise loose furniture, chinaware, galley loose equipment, artwork, and bed covers and linens.

Appliances

The following items and prices are presented as an indication of the equipment that can be purchased within the allowance; the allowance for all "white goods" as stated in the "Allowance sheet" is USD\$35,000, with all prices shown in US dollars, and any additional equipment not listed here incurring installation costs. The galley specification includes one GE dishwasher Model GSD2350R CS in stainless steel at \$300 and one ENODIS dishwasher,

three minute model Avenger HT, at \$3550, paired with one GE double convection self cleaning oven, model PT960SPSS, at \$3600 and one 36 inch Miele induction cooktop, Model KM5773, at \$3000. Ventilation is handled by one 36 inch stainless Zephyr Power Series unit, model AK7536ASX, delivering 1100 CFM via dual internal blowers with two blowers (PBI1100A), complete with a heat lamp kit, heat lamp bulbs, and a telescopic backsplash with warming shelves (AK0716), at \$2130. Waste handling is enhanced by two Insinkerator one horsepower garbage disposals, model EXCEL, at 2 x \$320, along with one GE Profile stainless steel trash compactor, model GCG1500RSS, at \$640.

Cold storage is abundant with two True refrigerators, model T23, at 2 x \$2000; one Avanti counter high refrigerator, 4.5 CU., model BCA4562SS2, at US\$250; and two Frigidaire 8.8 cubic ft chest freezers, model FFN09M5HW, each at US\$339 on the aft pilothouse deck, with the second designated as a "TRASH FREEZER." Entertaining spaces are provisioned with three GE GVS04BDWSS stainless steel beverage centers, 4.10 Cu., on the aft deck, skylounge, and flybridge at 3 x US\$320; two GE under counter wine coolers, model PCR06WATSS, one in the skylounge and one in the dining area, at 2 x \$1100; and two Hoshizaki ice makers, 50 ppd, model AM50BAEAD, in the skylounge and flybridge, at 2 x \$1500. Laundry care comprises one GE stacked washer/dryer, WSM2700HWW, located in the master stateroom at \$1200, supported by two LG vent less dryers in the laundry, model DLE2050W, at 2 x \$750, and two LG washers in the laundry, model WM2050CW, at 2 x \$700. Completing the suite is one Miele CVA2000 Series built in Nespresso coffee system (models CVA2650/2660) at \$2400.

Dining

The dining experience aboard is designed for unhurried indulgence, where sunrise breakfasts and candlelit dinners unfold against a panorama of sea and

sky. A beautifully crafted table anchors the space, surrounded by plush seating that encourages lingering conversation as courses arrive with effortless grace. Expansive windows draw natural light throughout the day and set a dramatic backdrop at dusk, while refined finishes and softly layered lighting create the ambiance of a private, floating brasserie. The seamless connection to the adjacent living areas allows discreet service and a fluid rhythm from aperitif to dessert, ensuring each gathering—whether an intimate meal or a celebratory feast—feels both elevated and comfortably at home on the water.

Master stateroom

The master stateroom is conceived as a serene private retreat, where generous volume, thoughtfully integrated storage, and refined cabinetry create an atmosphere of effortless comfort. Subtle, layered lighting sets an inviting tone for evenings at anchor, while meticulous acoustic attention promotes restorative sleep underway. Every surface reflects a commitment to enduring luxury and quiet privacy, ensuring the space feels both indulgent and impeccably composed on every voyage.

Salon

At the heart of the yacht, the salon unfolds as a refined sanctuary for relaxation and conversation, bathed in natural light and framed by beautifully crafted finishes. Generous lounge seating invites unhurried comfort, while a low-profile table anchors the space for casual dining or evening cocktails. The open-plan arrangement promotes an easy flow to adjoining areas, preserving clear sightlines and a sense of spaciousness, with discreet storage ensuring a composed, clutter-free ambiance. Subtle lighting, soft-touch textures, and an elegant palette elevate the mood whether underway or at anchor, transforming the salon into a welcoming retreat from first light through the

last toast of the evening.

CONTACTS

Shestakov Yacht Sales is a brokerage company specializing in the sale and service of yachts worldwide. The company offers services for buying and selling both new and used motor yachts, sailing vessels, and luxury superyachts. They also provide yacht registration, insurance, technical maintenance, crew selection, and charter organization services across the U.S., Canada, Latin America, the Caribbean, and the Bahamas.

The founder and lead broker of the company is Andrey Shestakov, a licensed and certified expert with extensive experience in marine engineering and shipbuilding.

The company has an extensive network of partnerships with major yacht manufacturers worldwide and provides services in multiple languages, including Russian, Ukrainian, Spanish, and English. The office is in Dania Beach, Florida, USA.

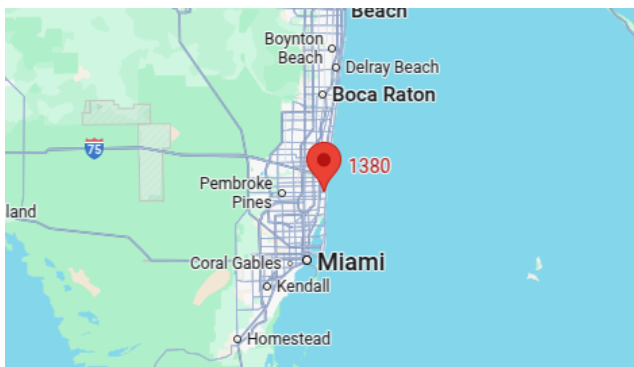
For more information and to view available yachts, you can visit the company's official website: <https://shestakovyachtsales.com>

Contact details

Phone: +1(954)274-4435

Email: andrey@shestakovyachtsales.com

Address



1380 Weeping Willow Way, Hollywood,
Florida 33019