



NOVELA - CBI NAVI



Builder: [CBI NAVI](#)

LOA: 100' 0" (30.60 m)

Year Built: 2000

Beam: 23' 0" (7.20 m)

Model: 29M

Max Draft: 7' 3" (2.20 m)

Price: \$4,049,295.77 USD Subject to change.

Cruising Speed: 12 Knots (13.81 MPH)

[See full listing on our website](#)

Location: Trogir, Croatia

Max Speed: 15 Knots (17.26 MPH)

If you would like to buy a yacht **NOVELA - CBI NAVI** or would like help answering any questions concerning purchasing, selling, or chartering a yacht, please call **+1(954)274-4435** or click here on <https://shestakovyachtsales.com>

TABLE OF CONTENTS

OVERVIEW 3

SPECIFICATIONS 4

 Basic Information 4

 Dimensions 4

 Speed, Capacities and Weight 4

 Hull and Deck Information 5

 Engine Information 5

GALLERY 6

DETAILED DESCRIPTION 11

CONTACTS 16

OVERVIEW

Accommodating up to eight guests across four elegantly appointed cabins, NOVELA offers a refined balance of privacy and indulgence. The full-beam master suite, positioned on the main deck, is framed by expansive windows that capture sweeping vistas and suffuse the interior with natural light, while the chic and contemporary interior by designers Luca Dini and Sasa Milosavljevic blends timeless sophistication with everyday comfort. Despite her impressive dimensions, the yacht's layout feels remarkably generous, creating ideal spaces for entertaining or quiet relaxation.

Outside, NOVELA's generous decks invite both lively gatherings and tranquil solitude. The generously sized flybridge provides panoramic views and abundant seating, an elegant setting for sunset cocktails or stellar nights, and the spacious sunbathing area offers ample room to recline in style. A diverse and extensive selection of water toys completes the leisure package, promising endless activity on the waves.

Distinctive in her class through a steel hull, NOVELA delivers exceptional stability and durability, well suited to varied sea conditions and ensuring a smooth, comfortable cruising experience. With an impressive nautical mile range, she affords the freedom for extended voyages and flexible itineraries. Meticulously maintained by her owner and crew and presented for yacht sale in pristine condition, NOVELA enjoys a proven charter success and a strong reputation. With few similar steel-hulled yachts available in her current location, she represents an exceptional opportunity for a buyer seeking a vessel that combines a turnkey private yacht with a sustainable, established charter prospect.

SPECIFICATIONS

Basic Information

Category:
Motor yachts

Year Built:
2000

Model Year:
2000

Country:
Croatia

Dimensions

LOA:
100' 0" (30.60 m)

Max Draft:
7' 3" (2.20 m)

Beam:
23' 0" (7.20 m)

Speed, Capacities and Weight

Cruise Speed:
12 Knots (13.81 MPH)

Water Capacity:
2377.55 Gallons

Max Speed:
15 Knots (17.26 MPH)

Fuel Capacity:
10333.35 Gallons

Gross Tonnage:
197 Pounds

Hull and Deck Information

Hull Material:

Steel Yachts

Hull Designer:

N/A

Deck Material:

Steel

Interior Designer:

Luca Dini

Hull Configuration:

N/A

Engine Information

Engines:

2

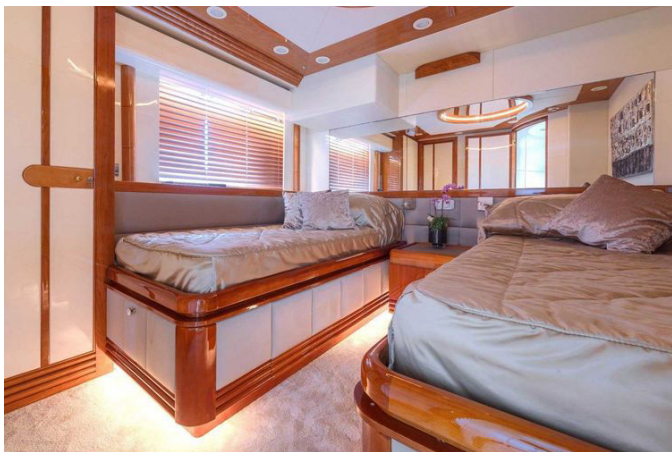
Manufacturer:

Caterpillar

GALLERY











DETAILED DESCRIPTION

Accommodations

This luxurious yacht offers an exquisite blend of comfort and elegance, featuring a total of four cabins designed to cater to your every need, including two double cabins—one of which serves as the master suite on the upper deck while the other functions as the VIP suite on the lower deck—alongside two twin cabins that can be conveniently converted into doubles to accommodate varying guest arrangements, providing a total of eight berths and, for those seeking extra privacy, four single berths to ensure ample space for all guests; the vessel is fitted with four bathrooms and an additional day toilet, and the crew is well provided for with three dedicated crew cabins offering five berths, supported by two wc/shower units and a comfortable crew mess, all thoughtfully arranged to combine luxury with practicality and deliver an unparalleled experience on the water.

Tenders and watersports

At the heart of this yacht's watersports programme is a Brigg Eagle tender measuring 7.2 meters and powered by a Mercury Verado 300 HP outboard engine, offering swift and reliable transfers, while adrenaline seekers will appreciate two high-performance jet skis, the Sea Doo RXP-X 260 HP and the Sea Doo RXT-X 260 HP; the watersports inventory is further enhanced by a Sanguineti Chiavari gangway and two Sea Bobs from 2017 for exhilarating underwater exploration, a sailing dinghy from 2014 for tranquil sails, and two 10.6-foot paddleboards for serene paddling, complemented by two wakeboards and two kneeboards so every guest can choose their preferred way to enjoy the sea and make each voyage unforgettable.

Audio & visual equipment

The yacht is fitted with a state of the art audio and visual system that ensures exceptional entertainment throughout, with the salon showcasing a Samsung 55" ES 800 Series 8 TV paired with a DVD system that includes PlayStation and Blu ray capabilities, an enriched audio experience delivered by a NAD stereo and a Navcom entertainment centre integrated with Apple AirPlay and B&O speakers to provide rich and immersive sound, while the master cabin features a 46" ES 8000 Series 8 TV alongside the same PlayStation and Blu ray system supported by NAD stereo, Navcom entertainment centre, Apple AirPlay and BOSE speakers to guarantee premium listening, the VIP cabin mirrors the master's setup with identical audiovisual equipment, and the guest cabin continues the high standard with a Navcom entertainment centre, Apple AirPlay and BOSE speakers so that every corner of the yacht is filled with high fidelity sound for stylish and comfortable enjoyment of media.

Machinery

Powered by robust Caterpillar 3412C engines each producing 1554 horsepower, the yacht delivers powerful and smooth performance with an efficient diesel consumption of 150 liters per hour; as of June 2024 the starboard engine has logged 3420 hours and the port engine 3413 hours, with precise engine controls by Kobelt, propulsion via four blade twin screw propellers complemented by a Mannesmann Rexroth bow thruster for enhanced manoeuvrability, a ZF BW255 gearbox renowned for durability and smooth operation, and Side Power SPS93 VF1650 Vector Fins stabilizers to maintain stability at sea, all meticulously specified to offer a seamless blend of power, efficiency and reliability for discerning owners and guests.

Generators & auxiliary equipment

The yacht's power and auxiliary systems include a Northern Lights M44ST-HE generator rated at 50 kW with 4,600 hours of operation and a Kohler 35 EF KO ZD generator with 4,500 hours, supported by engine batteries rated at 560 AMP/h for reliable starting and operation, Ciak service batteries at 24V and a Phase Three battery charger to maintain optimal charge levels, while shore power capability is configured for 380 V, together composing a robust and well engineered electrical suite that ensures smooth, efficient and consistent power delivery for all onboard systems.

Ancillary equipment

The yacht is equipped with two Original Pool anchors each weighing 150 kg, secured by two anchor chains each 150 meters long and 14 mm in diameter to ensure dependable mooring in varied conditions, while two aft winches from F.E.M.M., each rated at 4 kW, facilitate efficient line handling and improved manoeuvrability, and an Idromar water conditioning system with a capacity of 500 liters per hour guarantees a steady supply of treated water, together forming a comprehensive set of ancillary equipment designed to enhance functionality and preparedness at sea.

Safety & security equipment

Safety aboard is comprehensively addressed with Zodiac Solas B life rafts designed to accommodate up to 16 people each, complemented by 16 Lalizas Marine automatic inflatable life jackets for immediate buoyancy, fourteen strategically placed fire extinguishers including dry powder and carbon dioxide foam extinguishers to tackle different fire scenarios, and a CS/Fire Came security fire alarm system for early detection and alerting, all combined to

provide a secure and protected environment so guests and crew can enjoy their voyage with confidence.

Communication equipment

The yacht's communication suite comprises a Sailor 6222 DSC VHF for reliable short range communications, a Skanti TRP 7000 SSB radio for long range transmissions essential on ocean passages, a Motorola GSM phone for cellular connectivity where available, and a Sailor SE 406 II EPIRB to transmit distress signals in emergencies, collectively ensuring that the vessel remains connected and capable of summoning assistance when required.

Navigation equipment

Outfitted with an advanced navigation suite, the yacht features Furuno FR-2125 XBAND ARPA and Furuno FUR-DRSYA radars for comprehensive situational awareness, an Anschutz Pilotstar D autopilot for seamless course management, a Furuno GP-330B GPS and Furuno Navenet 3D Gyro plotter for pinpoint positioning and detailed chart plotting, an Anschutz compass for directional accuracy, a Furuno DFF1 fish finder for locating marine life, a B&G speed log for precise speed measurement, Furuno Fax 30 Navtex and Weather Fax systems to receive navigational and meteorological information, and a KNS S8 satellite TV system for onboard entertainment and additional information, together ensuring safety, convenience and confidence on every voyage.

Galley and domestic equipment

The galley is comprehensively equipped to serve gourmet dining and seamless domestic operations, with refrigeration provided by a Bosch 181 liter unit, a Gorenje 390 liter refrigerator and a Liebherr 436 liter refrigerator alongside a

Liebherr 362 liter deep freezer, ice is produced by Virti Frigo and Scotsman ice makers, cooking is effortless on a Miele cooker with six burners and a Miele oven while cleanup is handled by a Miele dishwasher, laundry needs are met with a Miele washer and two dryers from Miele and Bosch, a sky bar features a top loading built in fridge for entertaining, a 60 cm x 60 cm gas grill barbecue offers outdoor cooking options, mini bars include a EuroCave wine cooler and a Vitri Frigo wine cellar to store fine wines at ideal temperatures, and granite countertops add a sophisticated finish, all combined to ensure culinary and domestic requirements are met with style and efficiency.

Special equipment

To elevate onboard leisure the yacht offers a Jacuzzi for relaxation while admiring the views, a BBQ for elegant alfresco dining and entertaining, and a well appointed mini bar to ensure refreshments are always within easy reach, collectively creating an atmosphere of indulgence and comfort that makes every moment on board memorable.

CONTACTS

Shestakov Yacht Sales is a brokerage company specializing in the sale and service of yachts worldwide. The company offers services for buying and selling both new and used motor yachts, sailing vessels, and luxury superyachts. They also provide yacht registration, insurance, technical maintenance, crew selection, and charter organization services across the U.S., Canada, Latin America, the Caribbean, and the Bahamas.

The founder and lead broker of the company is Andrey Shestakov, a licensed and certified expert with extensive experience in marine engineering and shipbuilding.

The company has an extensive network of partnerships with major yacht manufacturers worldwide and provides services in multiple languages, including Russian, Ukrainian, Spanish, and English. The office is in Dania Beach, Florida, USA.

For more information and to view available yachts, you can visit the company's official website: <https://shestakovyachtsales.com>

Contact details

Phone: +1(954)274-4435

Email: andrey@shestakovyachtsales.com

Address



1380 Weeping Willow Way, Hollywood,
Florida 33019