

AST100CENROY - ASTONDOA



Builder: [Astondoa](#)

LOA: 100' 0" (30.48 m)

Year Built: 2021

Beam: 22' 0" (6.81 m)

Model: 100 Century

Min Draft: 19' 5" (5.92 m)

Price: - Subject to change.

Max Draft: 21' 7" (6.58 m)

[See full listing on our website](#)

Location: Fort Lauderdale, United States

Cruising Speed: 22 Knots (25.32 MPH)

Max Speed: 24 Knots (27.62 MPH)

TABLE OF CONTENTS

OVERVIEW	3
SPECIFICATIONS	4
Basic Information	4
Dimensions	4
Speed, Capacities and Weight	4
Accommodations	4
Hull and Deck Information	5
Engine Information	5
GALLERY	6
DETAILED DESCRIPTION	17
CONTACTS	21

OVERVIEW

When Astondoa marked its centenary, the 100' Century emerged as a definitive tribute, blending the heritage of the Spanish shipyard with the expectations of today's discerning yacht owner. By uniting expansive alfresco decks that welcome large gatherings of family and friends with refined, Italian-inflected interiors designed for comfort and effortless living, Astondoa distilled the essence of a truly distinguished luxury motor yacht. At 100 feet, the Century has megayacht presence yet responds with the poise and agility of a performance powerboat.

Advances in naval architecture and hull engineering have empowered this family-run builder to evolve continuously, harnessing state-of-the-art 3D printing, five-axis machining, and resin infusion with vacuum techniques. By integrating next-generation composites such as carbon fiber and Kevlar, alongside lightweight metals like titanium, within its fiberglass construction, Astondoa elevates strength-to-weight and interior volume, delivering flexibility, durability, and optimized displacement—advantages that translate to greater efficiency, enhanced speed, and reduced fuel burn across this flybridge yacht and superyacht category.

NEW BUILD – INQUIRE FOR INFORMATION, OPTIONS, AND PRICING!

SPECIFICATIONS

Basic Information

Model Year:
2021

Country:
United States

Year Built:
2021

Dimensions

LOA:
100' 0" (30.48 m)

Beam:
22' 0" (6.81 m)

Min Draft:
19' 5" (5.92 m)

Max Draft:
21' 7" (6.58 m)

Speed, Capacities and Weight

Cruise Speed:
22 Knots (25.32 MPH)

Water Capacity:
555 Gallons

Max Speed:
24 Knots (27.62 MPH)

Fuel Capacity:
2880 Gallons

Accommodations

Total Heads:
6

Hull and Deck Information

Hull Material:

Fiberglass and Plastic Yachts

Hull Designer:

N/A

Deck Material:

Fiberglass

Interior Designer:

N/A

Hull Configuration:

N/A

Engine Information

Engines:

2

Engine Type:

Inboard

Manufacturer:

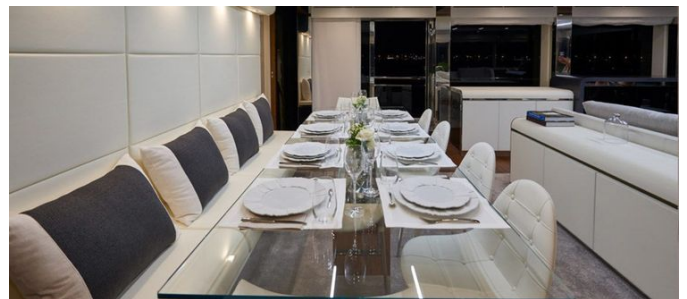
MTU

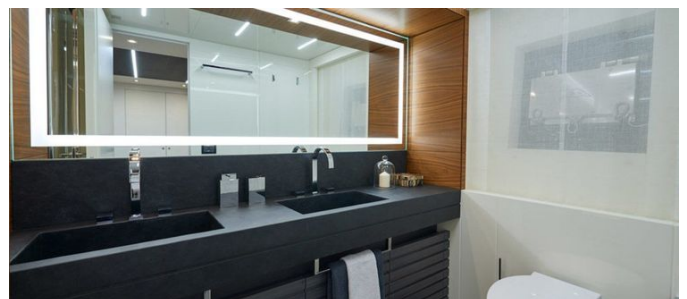
Fuel Type:

Diesel

GALLERY





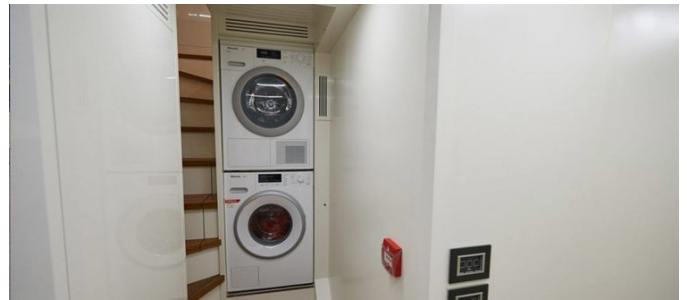


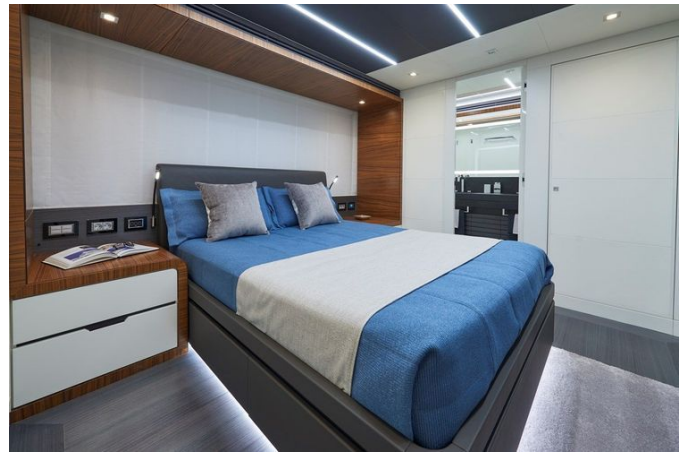


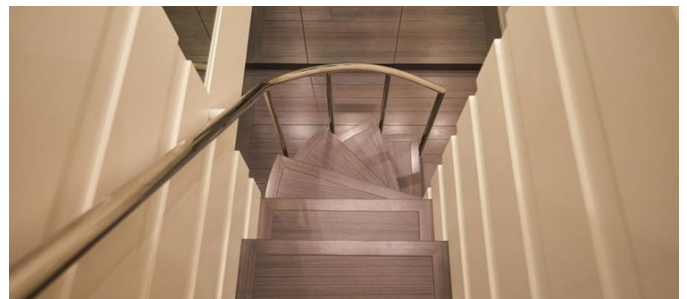
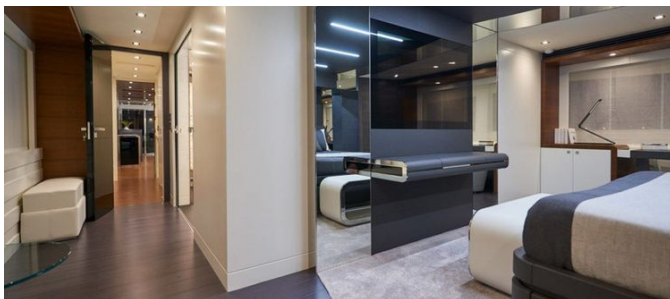














DETAILED DESCRIPTION

Vessel walk through

The spacious flybridge is the Century's focal point, maximizing open-air living while remaining thoroughly protected. A louvered retractable sunroof bathes the area in natural light and fresh air at a touch, and by night invites peaceful, romantic stargazing.

The latest 100 Century incorporates an open-air, fully equipped galley complete with wet bar and grill, complemented by additional bar seating that is perfect for al fresco dining and entertaining. This galley opens aft to a large teak deck and a Jacuzzi, surrounded by sun pads that beckon you to sun, soak, or siesta. Forward of the pilothouse, a huge sun pad surveys the sea, and just one step away a bow lounge with tables sits ready for shaded relaxation beneath a Bimini top whenever desired for socializing or dining.

The upper helm station grants the captain a wide, commanding view, superb comfort, and all the technology needed to operate from the flybridge; alternatively, within the pilothouse and sheltered from the elements, a flat dash and multi-screen navigational system deliver a broad array of top-of-the-line instrumentation.

The upper deck of the Astondoa 100 Century runs on a single level from bow to stern, so as a true walk-around yacht it allows guests of all ages to move with ease among multiple lounges and sun pads. Stairs lead down to the main deck where, to starboard, an electric door welcomes you into the spacious salon, which is also accessible from the aft deck. A few steps farther, a large teak-lined garage door opens to the waterline, offering guests a tender, water toys, and a variety of on-water activities.

Accommodations and interior

The full-beam master suite on the main deck is a sanctuary of space and light, appointed with a walk-in closet, generous storage, a vanity table, and lounges. Its luxurious en suite head features his-and-hers sinks for effortless daily rituals. A graceful curved wooden staircase descends to the lower deck, revealing four elegant guest suites, each with its own en suite head, welcoming up to 12 guests in consummate comfort and style. Dedicated crew quarters for three ensure that every need is anticipated and every moment is impeccably serviced.

The standard interior specification includes five cabins and five bathrooms as standard, plus a day head, and two crew cabins with an optional third cabin. Illumination is refined by an LED light system complemented by dimmers for internal lights, while an automatic electric door from the port-side passageway to the main cabin adds seamless convenience. Security and discretion are enhanced by a safe box in the owner's and in the captain's cabin, and privacy is assured with blinds offered in wood or aluminum finish. Practicality meets sophistication with the inclusion of an electric head.

Galley

The galley is thoughtfully appointed with Miele or equivalent appliances, including a refrigerator, oven, galley extractor, and hobs, complemented by a dedicated wine cellar accommodating thirty-four bottles, a deep freezer, and a microwave oven, delivering refined convenience and culinary capability at sea.

Engine room and mechanical equipment

Astondoa's signature engine room gleams with stainless steel, housing twin MTU 16V 2000 M86 engines that deliver 2,186 HP each, with the option of the

2000 M96 engines producing 2,400 HP. Standard mechanical equipment underscores confident cruising and ease of ownership, including air conditioning tropicalized to the USA zone, encompassing the crew cabins, with 240,000 BTU of capacity; two 40 kW generators rated at 277/480 V and 60 Hz; a hydraulic bow thruster; two aft mooring winches; an approved automatic fire-fighting system; an engine oil change system; dual Racor filters for the engines and Racor filtration for the generator; both manual and electric bilge pumps; a battery charger; an inverter; and a 220 V electrical circuit.

Deck equipment and exterior features

Thoughtfully engineered for effortless days at sea, the exterior presents an aft garage served by a transom door that grants access to the garage and the convertible swimming platform, complemented by a stainless steel trolley for launching and hauling the tender in stainless steel. Secure docking is assured by two aft mooring winches, additional cleats on the aft deck, and two cleats on the lateral side decks. Movement around the yacht is smooth and refined thanks to a concealed gangway with automatic handrail, two standard side-access doors, an automatic electric door from the port sideway to the main cabin, and an electric sliding door connecting the aft cockpit to the saloon. The warmth of teak enhances every step, with teak flooring in the cockpit, on the side main deck, and across the bathing platform, while comfort and conviviality are elevated by a cockpit table and generous cockpit cushions. On the sundeck, relaxation comes naturally with eight sundeck chairs in teak or lacquered aluminum, beautifully highlighted by a dedicated light system for the sundeck floor, matched by a light system for the lateral corridors. Practical touches include a flag stem, dockside water inlet points in the cockpit, bow, and sundeck, and the dependable muscle of a hydraulic windlass.

Helm

The helm is conceived as a fully equipped third control station, placing absolute command within reach with a powerful searchlight and a precise trim tab position indicator for confident maneuvering. A comprehensive navigation system presents information across four 26-inch displays dedicated to radar and autopilot, complemented by GPS, a compass, and VHF for assured navigation and communication. An intuitive monitoring and domotic equipment touchscreen system centralizes oversight of onboard operations, while an AIS receiver heightens situational awareness and a dedicated flaps indicator delivers immediate feedback for fine-tuned control.

AV electronics

The yacht's entertainment experience is thoughtfully curated with TV sets on board for immersive viewing, a DVD player for cinematic nights, and a CD player for timeless playlists, all complemented by a clear, reliable radio; robust cockpit speakers extend rich, balanced sound into the open air, ensuring every gathering is set to the perfect soundtrack.

Disclaimer

All particulars are presented in good faith, yet neither the accuracy of the information nor the condition of the vessel is guaranteed or warranted. Prospective buyers should instruct their agents or surveyors to investigate any details they wish to have validated. This vessel is offered subject to prior sale, price change, or withdrawal without notice.

CONTACTS

Shestakov Yacht Sales is a brokerage company specializing in the sale and service of yachts worldwide. The company offers services for buying and selling both new and used motor yachts, sailing vessels, and luxury superyachts. They also provide yacht registration, insurance, technical maintenance, crew selection, and charter organization services across the U.S., Canada, Latin America, the Caribbean, and the Bahamas.

The founder and lead broker of the company is Andrey Shestakov, a licensed and certified expert with extensive experience in marine engineering and shipbuilding.

The company has an extensive network of partnerships with major yacht manufacturers worldwide and provides services in multiple languages, including Russian, Ukrainian, Spanish, and English. The office is in Dania Beach, Florida, USA.

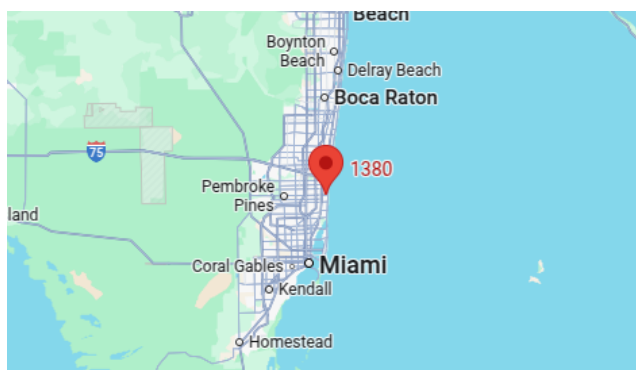
For more information and to view available yachts, you can visit the company's official website: <https://shestakovyachtsales.com>

Contact details

Phone: +1(954)274-4435

Email: andrey@shestakovyachtsales.com

Address



1380 Weeping Willow Way, Hollywood,
Florida 33019