

SX100 - SANLORENZO



Builder: [Sanlorenzo](#)

LOA: 100' 0" (30.53 m)

Year Built: 2025

Beam: 24' 0" (7.32 m)

Model: SX100

Min Draft: 18' 4" (5.60 m)

Price: - Subject to change.

Max Draft: 19' 8" (6 m)

[See full listing on our website](#)

Location: Fort Lauderdale, United States

Cruising Speed: 12 Knots (13.81 MPH)

Max Speed: 23 Knots (26.47 MPH)

TABLE OF CONTENTS

OVERVIEW	3
SPECIFICATIONS	4
Basic Information	4
Dimensions	4
Speed, Capacities and Weight	4
Accommodations	5
Hull and Deck Information	5
Engine Information	5
GALLERY	6
DETAILED DESCRIPTION	10
CONTACTS	12

OVERVIEW

The Sanlorenzo SX100, a 30.5 m (100 ft) luxury crossover motor yacht, advances the SX lineage with expansive, free-flowing interiors that blur the line between vessel and sea. A striking main salon seamlessly opens onto a fully equipped beach club via drop-down side terraces, while abundant interior volume and sweeping panoramic glazing enhance a superyacht sense of light, space and continuity. Conceived by Zuccon International Project with refined, contemporary finishes, the SX100 comfortably accommodates 8 guests and 5 crew, and, powered by quad Volvo Penta IPS propulsion, achieves a top speed of around 23 knots, delivering composed performance and efficient cruising befitting a motor yacht and crossover superyacht.

SPECIFICATIONS

Basic Information

Category:
Motor yachts

Year Built:
2025

Sub category:
Expedition Yachts

Country:
United States

Model Year:
2026

Dimensions

LOA:
100' 0" (30.53 m)

Beam:
24' 0" (7.32 m)

Min Draft:
18' 4" (5.60 m)

Max Draft:
19' 8" (6 m)

Speed, Capacities and Weight

Cruise Speed:
12 Knots (13.81 MPH)

Gross Tonnage:
134 Pounds

Max Speed:
23 Knots (26.47 MPH)

Accommodations

Sleeps:

8

Crew Cabin:

2

Total Heads:

5

Crew Berths:

4

Hull and Deck Information

Hull Material:

Fiberglass and Plastic Yachts

Hull Designer:

Sanlorenzo

Deck Material:

Composite

Interior Designer:

Piero Lissoni

Hull Configuration:

Monohull

Engine Information

Engines:

4

Engine Type:

Inboard

Manufacturer:

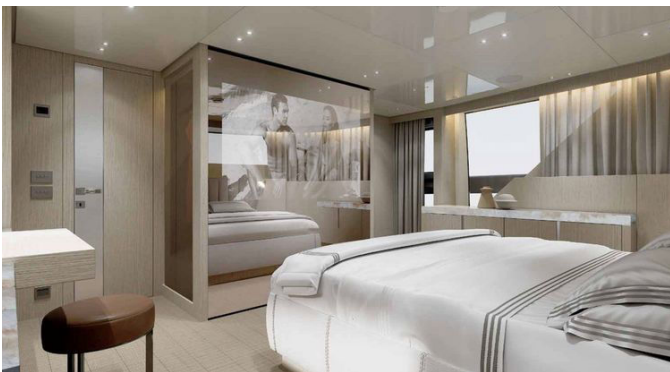
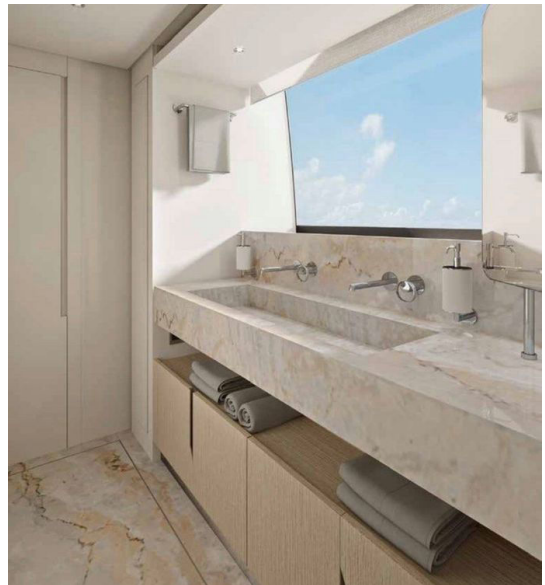
Volvo Penta

Fuel Type:

Diesel

GALLERY









DETAILED DESCRIPTION

Full description

The Sanlorenzo SX100 represents the pinnacle of the SX crossover concept, seamlessly uniting the volume and presence of a superyacht with the flexibility, functionality, and lifestyle-forward spirit of an explorer-inspired platform. At 100 feet (30.5 meters), the SX100 offers extraordinary interior and exterior living space rarely seen in this category, creating a yacht that feels substantially larger than her length overall. Designed by Zuccon International Project with refined, contemporary interiors, the SX100 is anchored by a profound connection to the sea, its defining feature an expansive beach-club-style stern that flows effortlessly into a multi-level lounge and social hub, forming the heartbeat of the yacht. Broad, uninterrupted sightlines, fold-down terraces, and wide-open volumes deliver an authentic indoor-outdoor living experience ideal for entertaining, unwinding, and extended cruising. The main deck is conceived as a single, fluid living environment, enhanced by full-height panoramic glazing that bathes the interior in natural light; the salon and dining areas feel more akin to a modern waterfront residence than a traditional motor yacht, offering flexible layouts and movable furnishings while preserving Sanlorenzo's signature understated elegance. Every detail speaks to Italian craftsmanship, from carefully curated materials to immaculate finishes and harmonious proportions. Accommodations are crafted for comfort and privacy, typically welcoming eight guests in four luxurious staterooms, including a spacious owner's suite, while crew quarters for up to five ensure discreet, seamless service and guest privacy throughout the yacht. Powered by quad Volvo Penta IPS drives, the SX100 delivers impressive performance with notable efficiency, agile maneuverability, and reduced noise and vibration, a propulsion package that enables confident handling, smooth passage-making,

and effortless docking, making the SX100 equally appealing to seasoned owners and those stepping into the 100-foot realm for the first time. Prioritizing lifestyle over convention, the SX100 offers the freedom of open space, the comfort of a luxury residence, and the build quality and pedigree of Sanlorenzo, making it a compelling choice for owners seeking a modern, design-forward yacht with true versatility, exceptional volume, and an intimate connection to life on the water.

CONTACTS

Shestakov Yacht Sales is a brokerage company specializing in the sale and service of yachts worldwide. The company offers services for buying and selling both new and used motor yachts, sailing vessels, and luxury superyachts. They also provide yacht registration, insurance, technical maintenance, crew selection, and charter organization services across the U.S., Canada, Latin America, the Caribbean, and the Bahamas.

The founder and lead broker of the company is Andrey Shestakov, a licensed and certified expert with extensive experience in marine engineering and shipbuilding.

The company has an extensive network of partnerships with major yacht manufacturers worldwide and provides services in multiple languages, including Russian, Ukrainian, Spanish, and English. The office is in Dania Beach, Florida, USA.

For more information and to view available yachts, you can visit the company's official website: <https://shestakovyachtsales.com>

Contact details

Phone: +1(954)274-4435

Email: andrey@shestakovyachtsales.com

Address



1380 Weeping Willow Way, Hollywood,
Florida 33019