

## SEA N SEA - OCEAN ALEXANDER



**Builder:** [Ocean Alexander](#)

**LOA:** 100' 0" (30.53 m)

**Year Built:** 2016

**Beam:** 23' 0" (7.01 m)

**Model:** Skylounge

**Min Draft:** 18' 1" (5.50 m)

**Price:** \$5,490,000 USD Subject to change.

**Max Draft:** 21' 1" (6.42 m)

[See full listing on our website](#)

**Location:** Miami, United States

**Cruising Speed:** 16 Knots (18.41 MPH)

**Max Speed:** 24 Knots (27.62 MPH)

---

# TABLE OF CONTENTS

---

<b>OVERVIEW .....</b>	<b>3</b>
<b>SPECIFICATIONS .....</b>	<b>4</b>
Basic Information .....	4
Dimensions .....	4
Speed, Capacities and Weight .....	4
Accommodations .....	5
Hull and Deck Information .....	5
Engine Information .....	5
<b>GALLERY .....</b>	<b>6</b>
<b>DETAILED DESCRIPTION .....</b>	<b>13</b>
<b>CONTACTS .....</b>	<b>30</b>

## OVERVIEW

---

Ocean Alexander SEA N SEA exemplifies elevated craftsmanship and fastidious care. Kept by her original owners from delivery, she is in superb condition with low-time engines, an active main-engine warranty, and an array of bespoke enhancements. Vast windows, generous alfresco spaces, and a versatile layout suit private cruising or charter service. Priced to compete, SEA N SEA offers an opportunity for discerning buyers seeking a luxury motor yacht of distinction.

# SPECIFICATIONS

---

## Basic Information

---

**Model Year:**  
2016

**Country:**  
United States

**Year Built:**  
2016

## Dimensions

---

**LOA:**  
100' 0" (30.53 m)

**Beam:**  
23' 0" (7.01 m)

**Min Draft:**  
18' 1" (5.50 m)

**Max Draft:**  
21' 1" (6.42 m)

## Speed, Capacities and Weight

---

**Cruise Speed:**  
16 Knots (18.41 MPH)

**Water Capacity:**  
650 Gallons

**Max Speed:**  
24 Knots (27.62 MPH)

**Fuel Capacity:**  
4000 Gallons

**Gross Tonnage:**  
173 Pounds

## Accommodations

---

**Sleeps:**

6

**Crew Berths:**

4

**Total Heads:**

6

## Hull and Deck Information

---

**Hull Material:**

Fiberglass and Plastic Yachts

**Hull Designer:**

N/A

**Deck Material:**

Fiberglass

**Interior Designer:**

Evan K. Marshall

**Hull Configuration:**

N/A

## Engine Information

---

**Engines:**

2

**Engine Type:**

Inboard

**Manufacturer:**

Caterpillar

**Fuel Type:**

Diesel

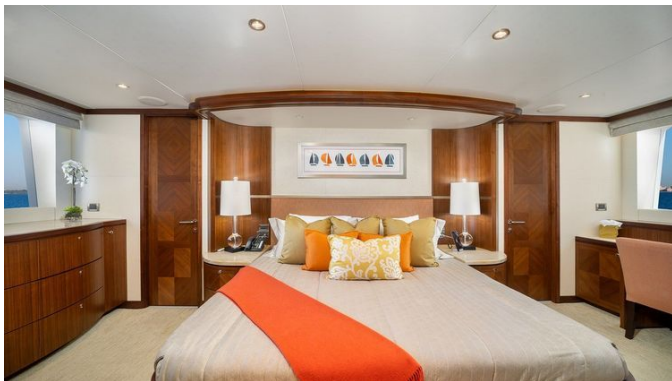
# GALLERY















---

# DETAILED DESCRIPTION

---

## Main description

---

Ocean Alexander SEA N SEA is a standout expression of refined craftsmanship and meticulous care. In original ownership since launch, she remains in outstanding condition with low engine hours, a remaining main engine warranty, and numerous custom upgrades. Expansive windows flood the interior with light, generous outdoor living areas invite effortless relaxation, and a flexible layout is equally at home on private cruises or charters. Competitively priced, SEA N SEA presents a rare opportunity for discerning buyers.

She is a turnkey yacht, pristinely maintained by her original owner, with mechanicals current on all services and the one thousand-hour service completed on the main engines and generators. Power comes from Caterpillar C32 Acert engines, while Sidepower® Vector Fin (DAME 2013 award winner) hydraulic sixteen-square-foot zero-speed stabilizer fins deliver superb comfort at rest and underway. Vast exterior deck spaces provide ample alfresco dining areas, complemented by a forward deck lounge with sail shades and wide-spanning sky lounge windows offering panoramic views. Practicality meets luxury with a day head on the main deck and another in the sky lounge, a Crestron package throughout, a yacht controller for effortless handling, new carpet, and refreshed exterior soft goods.

## Machinery

---

Power is delivered by two 1,925 hp Caterpillar C-32 ACERT engines, showing 1,680 hours as of 01/2026, with warranty coverage good through 6/3/2026. The machinery spaces are meticulously executed, with stainless steel engine beds

and stainless steel mounting plates flanked by stainless steel rails. Vigilant safeguards include an engine alarm system for low oil pressure and high water temperature, complemented by a fire extinguisher system with an engine shutdown feature. Service is streamlined by a lube oil change system for engines and generators, fed by an approximately 45 gallon lube tank. Command is effortless from the skylounge control station, which presents complete engine instrumentation with lighted, modern switches.

Engine room environment is expertly managed by Delta T intake and exhaust fans with variable frequency drives that push and pull air through the machinery spaces to achieve a high rate of air exchange. Ducting is fitted with fire dampers featuring both manual and automatic triggering tied into the machinery shutdown circuits, while interior living space ducts are insulated and soundproofed. Delta T water separator grills are installed on both intake and exhaust sides. Adjustable/reversible Delta T fans for engine exhaust are located on the superstructure rather than the hull side to maximize protection from water and salt spray, resulting in safer, lower maintenance ownership (Unique OA feature). A stabilizer with power take off from both engines further refines the ride.

The hydraulic steering system is paired with a steering control station equipped with complete instrumentation, while the interior steering wheel is wrapped in Ultraleather (same color as dash). Running gear includes stainless steel rudders with integrated zinc plates and a dripless seal for the rudder post, along with maintenance free "dripless" seals for the engine shaft packing glands. Propulsion is via a high performance, computer designed and machined NiBrAl propeller, Class "S.", driven by an Aqua 22HS propeller shaft; 22HS is a high grade austenitic alloy stainless steel that provides superior corrosion resistance with remarkable durability.

## Generator & auxiliary systems

---

Power aboard is anchored by two Kohler 53KW gensets, with Port 3921 / Stbd 3921 hours (May 2025). Generator exhausts are water-drop type per Centek, Marine Exhaust Co., or equal, and each generator set is resiliently mounted with a sound shield and vibration dampener to ensure quiet, composed operation.

The AC | DC system delivers comprehensive convenience and control, with AC outlets throughout and all primary AC & DC electrical wiring appropriately labeled across the yacht. Safety and reliability are elevated by a GFI (110V) AC outlet, a robust 24 Volt system, and engine battery isolation switches. AGM batteries provide a 40F to 140F operating temperature range with industry-leading low self-discharge rates of 1 to 3%. Command and oversight come via the Octoplex NEMA 2000 electrical control system, based on aerospace technology for remote activation, control, and status reporting of all AC and DC breakers. It monitors all power sources (AC and DC) for voltage, frequency, and amperage abnormalities and provides visual and audio alerts. Enhanced circuit breaker functionality includes no-load indication, dimming, and usage information with touchscreen monitors that are user-reconfigurable. Brown-out configurable control through auto load shedding is included, ensuring operator-designated equipment—such as navigation and other essential systems—remains powered while automatically switching other systems off. The Octoplex NEMA 2000 Vessel system monitor system provides oversight of main access doors, tank level, bilge level, and battery monitoring of current, voltage, and temp.

Shore power arrives via two 100 AMP receptacles on the transom with a cable master, giving flexible and effortless connection at the dock.

Illumination is refined and reliable with 24V LED lights (aerospace quality, specially tuned color temperature for Ocean Alexander), strategically placed

convenience lights, a floodlight at the back of the boat deck, and full international navigation lights for confident passagemaking.

Charging is handled by a Victron 100 AMP charger complemented by an additional Victron battery charger, ensuring swift, intelligent replenishment of onboard power reserves.

Heavy-duty batteries, new in 2023, are supported by a battery paralleling system with a control switch and a dedicated service battery switch, delivering redundancy and simplified management.

A comprehensive bonding system safeguards the vessel, with copper straps secured to the hull and running the entire length of the vessel parallel to the centerline. Engines, generators, metallic through hulls, strainers, and pump bodies are connected to the bonding strap using an 8 AWG wire minimum or equivalent, ensuring robust grounding and long-term reliability.

## Tank capacities

---

Designed for extended cruising, this yacht carries a fuel capacity of 4,000 gallons, a fresh water supply provided by one 650-gallon tank, and a holding capacity of one 200-gallon tank. The freshwater system centers on a two millimeter-thick 316 stainless-steel water tank with a sight gauge, complemented by a Headhunter pressure freshwater system, a fresh-water outlet with hose serving the engines and generator, cold freshwater washdowns at the bow, stern, and boat deck, and a convenient dockside water connection. For comfort aboard, hot water is delivered by two forty-gallon water heaters insulated with high-density fiberglass and fitted with high-efficiency heating elements.

The fuel system features 4.5 millimeter-thick 5052 aluminum fuel tanks with sight gauges, tested to International Standards 33CFR 510(a), and equipped with a high and low fuel level alarm system. Fuel management is refined by

dual Racor fuel/water separators with Y-valves serving both the engines and generator, as well as a Gulfcoast fuel polishing system based on the US Military Abrahams-M1 Tank design. Sight gauges are provided for all tanks. Exceeding industry safety standards, the system incorporates a flame arrestor and is designed to prevent ignition of fumes during fueling and heavy operation—an enhancement usually found only in classed vessels and introduced new for 2014. Venting and the integrated “catchment system” are engineered to mitigate burps or overflow incidents, while both-side fillers for the fuel tanks with individual tank vents streamline deck operations.

Waste and bilge architecture is equally robust, with an ECOmar waste treatment system rated at six hundred gallons per day. Oversized drains discharge overboard efficiently, and the vessel is outfitted with automatic bilge pumps featuring manual and automatic switches in each space as divided by weather-tight bulkheads. High-water alarms are mounted in every bilge zone, with a dedicated high-water bilge alarm at every Rule bilge pump station. A dry bilge area arrangement is maintained at the center of the engine room. Entertainment on deck is elevated by a flip-down thirty-two-inch TV with satellite receiver and additional exterior speakers that deliver full stereo effect on the aft Skylounge.

## Ancillary equipment

---

Engineered for comfort in every latitude, the yacht features a Marine Air chilled water central air conditioning system with air handlers and air purifiers, purpose built for extreme tropical climates and reverse cycle capability operating down to 40°F. Its refrigerant is accepted worldwide under the Montreal Protocols, and a dedicated engine room air conditioning circuit safeguards machinery and crew comfort. Where possible, supply air is delivered through custom made ceiling panels discreetly hidden from view, shortening duct runs to enhance efficiency and cooling speed by more than 20

percent while reducing interior noise by about seven dB—an advancement new for 2014 with design cues from 120.

A color-coded piping system simplifies identification and service, while a Sea Recovery 1,400 G/day watermaker with automatic freshwater flush, pH neutralizer, UV sterilizer, and commercial pre-filter is specified as a US Coast Guard fourteen-person unit. Signaling is assured by a Kahlenberg heavy-duty horn, and longevity is built in with all engine-room and bilge spaces primed and top-coated in a durable polyurethane paint system. Visibility underway benefits from Hepworth heavy-duty commercial-grade pantograph windshield wipers and washers with an intermittent function. Structural excellence continues with detailed stringers in the engine room and lazarette, and an air compressor in the engine room with multiple quick-disconnect outlets supports maintenance and tender operations. Ocean Alexander's proprietary dry bilge ventilation system, with a dedicated bilge exhaust to the outside, maintains constant airflow to keep bilges dry and mildew-free, evacuating any condensation overboard to preserve a clean, healthy cruising environment—new for 2014.

## Safety & security equipment

---

At the heart of the yacht's protective suite is the N2KVIEW Safety & Security Monitoring Package, delivering automatic monitoring and alert capabilities with seamless remote access via Apple iPad or Android to operate, view, and alarm Octoplex data and the navigation system. A fully customizable screen layout tailors oversight to the captain's preference, while remote notification with cell phone accessibility ensures vital updates reach you instantly wherever you are.

Its comprehensive surveillance extends to main engines and generators, AC monitoring, DC house bank battery monitoring, engine room weather-tight bulkhead doors, tank levels, the fire system, bilge level (high water), and

exterior door sensors. The installation is complemented by refined Vimar switches and outlets, a Wireless Yacht Controller remote for effortless maneuvering, and a Panasonic Intercom System featuring a Panasonic phone system with digital Panasonic phones networked to the MSR, guest staterooms, crew area, salon, galley, and the sky lounge.

For fast, decisive response, the yacht is equipped with a fire extinguisher system with an engine shutdown feature.

## Communication equipment

---

Seamless onboard entertainment is delivered by a KVH TracVision HD7 system configured for DIRECTTV® HDTV, complemented by a DIRECTTV® receiver to provide crisp, dependable satellite television access whether at anchor or underway.

## Navigation equipment

---

From the skylounge helm, three touch-screen panels put state-of-the-art navigation and vessel systems at your captain's fingertips. Fully adjustable Stidd helm seating preserves comfort alongside precise control on long cruises, a convenient desk to starboard invites email checks and office tasks, and just forward a walkaround Portuguese bridge enhances safe movement and visibility.

The suite is anchored by a Furuno integrated with NMEA2000 platform displayed on three 19-inch Hatterland Series X marine monitors in the sky lounge, new for 2014, and driven by a Furuno Navnet Black Box TZTBB Processor. Detection and positioning are delivered by the Furuno 12KW 72n.m UHD Digital Radar Array, the Furuno GP330B GPS/WAAS NMEA 2000 Sensor, and the Maretron GPS200 GPS/WAAS, while the Furuno DFF1 Network Sounder with Furuno Digital Filtering provides crisp subsea detail. Weather and

situational awareness are enhanced by the Furuno BBWX2 Weather Receiver, the Furuno AIS Black Box Class B Full Duplex, the Maretron Ultrasonic Wind/Weather, and the Furuno NavPilot 700 Autopilot. Communications come through an Icom 25W VHF with 30W hailer, and advanced charting is powered by Furuno TZ Explorer MaxSea TimeZero Explorer Software. Entertainment and information at sea are enabled by KVH TracVision HD7 for DIRECTTV® HDTV, and onboard vigilance is supported by Axis marine cameras—two in the engine room and one on the aft deck. A UPS provides electrical protection for the navigation computer, and a 5-inch Ritchie compass stands ready as a steadfast heading reference.

## Deck equipment

---

The yacht's foundation is engineered in vinyl ester resin with high density structural foam, whose density delivers exceptional high temperature resistivity along with notable thermal and acoustic insulation. Longitudinal and lateral fiberglass stringers are filled with high density foam, and the fiberglass construction uses infusion lamination manufacturing technology. Ocean Alexander employs various techniques to reduce sound and vibration, focusing on a quiet and comfortable yachting environment through proprietary methods of controlling sound and noise transmission; these techniques include multiple insulation barriers—reflective, absorptive, and dampening materials—along with air pockets and flexible and isolation mounts, resulting in vibration and sound levels that are industry leading and at times one half to one tenth of ISO 6954 requirements (Unique OA feature). A reinforced collision bulkhead, a frameless window, and weather tight bulkheads with further sound and temperature insulation underscore safety and comfort. All exterior hardware is S/S 316 or to manufacturer requirements. The painted exterior surface features professional grade Alexseal polyurethane paint over epoxy based primers, providing the highest gloss and superior color retention

compared with gelcoat or other paint brands. Marine grade aluminum beams for floors, walls, and ceilings deliver greater rigidity and a monolithic structure that prevents movement and “creaky” sounds while underway, while cross knit directional carbon fiber in high stress areas adds structural integrity and torsional strength.

Refinement continues with a black boot top stripe and interior structural components that are all bonded to the hull. Below the waterline, three coats of Seahawk primer and a high build epoxy barrier coat are covered with three coats of Seahawk self polishing bottom paint (Unique OA feature, optional on competitors). A fiberglass rub rail with S/S striking plate and bronze through hull fitting complete the robust, seaworthy specification.

On deck, 2" elliptical 316 stainless steel handrails and stanchions grace the main deck, transitioning to 1 1/2" on the flybridge; the elliptical profile conforms better to the human grip than traditional round rails and delivers greater grip strength for safety and comfort (Unique OA feature). Substantial 316 stainless steel cleats are perfectly placed, and access flows effortlessly via a fiberglass staircase with teak steps from the cockpit up to the flybridge. A boat deck sliding hatch and electric stainless steel sliding doors to the salon enhance day to day ease. Distinctive exterior touches include two teak flag poles fore and aft; a foldable teak and stainless swim ladder; a weather tight door on the transom for access to the engine room and crew quarters; and white non skid on flybridge decks. Entertaining is elevated by a 32" Electric Chef electric barbecue and a flybridge seat with storage underneath and a high gloss table. Teak decking spans the aft deck and walkway to midship, complemented by a teak swim platform with teak steps. Practical detailing includes a high bulwark with flush mounted deck lights and bulwark side doors for boarding, side boarding gates in the cockpit and midship, and a recessed boarding ladder on the starboard gunnel. Forward, bow seating features concealed pop up lighting and a high low table that converts to a sun pad. Shade is provided by a manual awning atop the bow seating with

custom made S.S. poles and marine grade exterior, specified with Batyline Crème Ferrari mesh fabric, and complemented by custom exterior canvas and windshield mesh covers. Exterior ceiling panels are removable and finished with diamond faceted edging, creating a sharper, tailored look while allowing easy service of navigational electronics and plumbing runs (New for 2014 and design cues from the 120' OA). Nighttime ambiance and safety are enhanced by four underwater lights, S/S transom gates for pets and children protection, an ACR searchlight with remote on the sky lounge, and spreader lights for the swim step and flybridge. A second manual awning with custom made S.S. poles and marine grade exterior, again paired with Batyline Crème Ferrari mesh fabric, adds versatile shade options. Systems readiness is built in with pre plumbing and wiring for a Jacuzzi and a hydraulic 2500 lbs. yacht crane. Across the deck and pilothouse, white non skid fiberglass decks ensure secure footing, and a fiberglass settee with table anchors the aft deck for relaxed gatherings. A swim ladder adds water access, while the fiberglass staircase with teak steps from the cockpit to the flybridge underscores seamless circulation. Entertaining stations abound, with a wet bar featuring a sink and bar refrigerator on the flybridge and a second wet bar with sink and bar refrigerator on the aft deck. The updated exterior profile delivers a refreshed and sharper look in keeping with the latest international design direction, and a flip down 32" TV with satellite receiver includes additional exterior speakers for full stereo effect on the aft deck. An aft deck custom ceiling feature adds a signature design flourish.

Mooring and ground tackle are confidently handled by two Maxwell® hydraulic windlasses, VW4000C, working with dual stainless pool anchors 350 lbs. from hull sides with 300 ft anchor chain (1/2" HT) and chain stoppers. An integral roller and chain stopper pair with the Maxwell® anchor winch, and two Maxwell® VC2500 vertical electric rope winches serve the aft deck. A reinforced anchor platform and anchoring system, a chain counter, and a hands free anchor chain wash system that allows cleaning of the chain during

anchor operation (New for 2014) complete a truly offshore ready specification.

## Audio / visual entertainment

---

In the primary stateroom, an LED 50-inch TV with an A/V system is paired with one subwoofer to deliver immersive, private cinema quality. In the salon, an LED 55-inch TV is integrated with a professional A/V system (Dolby TrueHD, DTS-HD, and XM/Sirius capable) with multiEQ that provides a virtually perfect acoustical environment for up to six individual seating locations, and also detects "out of phase inner," auto-compensable to match with the subwoofer and speakers; HDMI 1.3 provides high-bandwidth HD video output for true color HD reproduction, while one subwoofer enriches the low-frequency presence. In the crew quarters, an LED 32-inch TV and DVD with a satellite receiver keep the team informed and entertained. The guest staterooms are equally well appointed, with an LED 32-inch TV with a satellite receiver on the port wall beside the door in the VIP, LED 22-inch TVs with satellite receivers on the walls of the port and starboard guest cabins, and an audio stereo and video system to round out the experience. In the skylounge, an LED 46-inch TV with an A/V system anchors the space for relaxed, elevated viewing.

## Galley & domestic equipment

---

Equipped and designed for the most seasoned chefs, the open galley invites conversation with a generous pass-through and luxurious bar seats, turning every course into a culinary show. Ocean Alexander showcases best-in-class appointments, including a wine cooler, freezer drawers, and a full-size refrigerator/freezer. Generous storage abounds with innovative cabinet doors that open and pivot for easy access and increased capacity, while ample upper and lower pantry space ensures you are provisioned for an extended cruise or a significant party with ease. Wood paneling and finely crafted cabinetry with

hidden hinges complement marble countertops and a marble galley floor. At the heart is a double-basin Elkay professional series kitchen sink with a Franke pull-out tap, supported by overhead dish lockers forward and aft. A 30-inch Thermador electric cooktop, secured by a custom stainless-steel potholder, pairs with a 30-inch Thermador electric oven, a Sub-Zero refrigerator/freezer, a 24-inch Viking over-the-range microwave, a 24-inch Jenn-Air dishwasher, a 15-inch Whirlpool trash compactor, and a Whirlpool garbage disposal. Fresh, safe water is assured by a Seagull water purifier—an ADEX design award winner—delivering filtration to 0.1 microns with EPA certification for microbiological purification.

Flowing forward, the pass-through reveals a stunning country kitchen arrangement where an L-shaped sofa sprawls beneath massive windows, and a working desk to starboard shares the same sweeping views. Guests are effortlessly accommodated with a nearby day head to starboard. The space is anchored by a wood dinette table and wood flooring in the forward dinette, with a dedicated freezer positioned ahead of the seating to keep provisions close at hand. Weather-tight doors open to the side deck, pantograph doors enhance safe movement, and a Phantom screen provides refined protection from insects and pollen, ensuring the main deck lounge remains as comfortable as it is captivating.

## Special equipment & other features

---

Thoughtfully curated upgrades elevate comfort and capability throughout, beginning with the enclosed skylounge, heated granite floors in the master bathroom, and salon custom wood flooring ILO carpet. Command is effortless from the electric Stidd helm seat, while the galley benefits from a custom S/S potholder for the cook-top. Entertainment and ambiance are refined by the Creston AV package, including remote-controlled window blinds, and reliable global power is supported by the power converter package.

On deck, the bow seating integrates concealed pop-up lighting and a hi-low table that converts to a sun pad, complemented by exterior speakers with audio streaming ability. Shade is provided by manual awnings for both the flybridge and the bow, each crafted with custom-made aluminum and marine-grade exterior "Batyline Creme" Ferrari mesh fabric. Nighttime presence is dramatic with high output LED underwater lights, four in total, and the aft custom ceiling feature adds a designer flourish. Safety and versatility are enhanced by S/S transom gates for pets and children protection. For entertainment al fresco, the flybridge and aft skylounge offer a flip-down 32-inch TV with satellite receiver and speakers, while the aft deck boasts a flip-down 40-inch TV with satellite receiver and speakers. Navigation and visibility are assured with an ACR searchlight with two remotes, FB and PH spreader lights for the swim step and FB deck. Docking finesse comes via a wireless Yacht Controller remote, and future wellness is anticipated with pre-plumbing and wiring for a Jacuzzi.

## Watersport equipment

---

Two Sea-Doo jet skis are included, delivering exhilarating performance and agile handling for high-energy adventures and effortless fun on the water.

## Accommodation

---

Step inside an interior of refined craftsmanship where wood paneling and cabinetry in semi-gloss harmonize with an interior wood selection in walnut finished in satin varnish. Removable ceiling panels are edged in diamond-faceted detailing to create a bespoke ambiance, new for 2014 with design cues drawn from the 120. Evan K. Marshall's design vision shapes the interior, the pilot station, and a matching wood-and-Ultraleather "floating" display pod, all ergonomically laid out to elevate pilot experience and

performance, also new for 2014 with inspiration from the 120. Underfoot and in the most elegant spaces, custom-designed, water-jet-cut granite with a stainless-steel insert enriches the lower foyer and master bathrooms, another 2014 advancement with cues from the 120. Comfort flows throughout with an Ocean Alexander Fresh Air system that filters outside air and vents it to the lower staterooms for constant, clean circulation, reducing free radicals and increasing oxygen levels, an enhancement introduced in 2014. High-quality European door locks, concealed hinges throughout interior cabinetry, and fabric-covered walls along the lower walkway convey quiet luxury, while cedar-lined hanging lockers with automatic lighting, ergonomically designed settees, and innerspring mattresses with independent his-and-her construction ensure undisturbed, restorative sleep. Practicality is woven into the beauty with a commercial-quality, Energy Star washer and dryer in the lower foyer, flip-up additional storage forward of the dinette beneath the fore windows, and electrical shades tailored for the salon, dining area, primary suite, and primary head.

Ascend the masterfully handcrafted spiral staircase from the dining area to a sky lounge that feels like a private second salon, wrapped in panoramic windows on all four sides so sunrises and sunsets bathe the space in light. Entertaining is effortless with a built-in cabinet and wet bar that integrates a Sub Zero drawer refrigerator with ice maker, a solid-panel door, and generous storage. A sofa with table invites conversation, while a 46-inch LED TV with A/V system drops down at your command. A discreet day head adds convenience, as do a chart locker and a wood valance board, and a Phantom screen protects the space from insects and pollen. At the helm, an electric Stidd helm seat enhances comfort, and when you wish to step out into the breeze, an electric stainless-steel sliding door glides open to the aft sky lounge.

A single touch ushers you from the aft deck into a salon with more than seven feet of headroom and nearly full-length windows engineered with inventive I-beam architecture to grant spectacular sightlines, even when seated.

Overhead, a 55-inch LED TV drops down for cinematic evenings, supported by a professional A/V system—Dolby TrueHD, DTS HD, and XM/Sirius capable—with MultiEQ that creates a virtually perfect acoustical environment for up to six individual seating locations and detects out of phase input, auto compensating in concert with the subwoofer and speakers; HDMI 1.3 delivers high bandwidth HD video output for accurate color reproduction. Power is refined by a Furman power conditioner featuring multi stage linear amplifier technology and extreme voltage shutdown to safeguard against unstable shore or genset power. The salon’s artistry includes wood paneling and cabinetry, a decorative ceiling treatment, a custom designed window mullion, and a wet bar with marble countertops that also accent the TV cabinet and dining room divider. Stone topped cabinetry frames a dining table that seats ten in comfort, with custom inserts behind lustrous doors to secure your china, and a wealth of storage ready to scale your entertaining. A Phantom screen defends against insects and pollen, while a Sub Zero refrigerator and Sub Zero ice maker stand ready for service. The dining room’s spiral staircase to the sky lounge is thoughtfully positioned to preserve your ever changing views.

The full beam primary stateroom is a private sanctuary entered through French doors and bathed in natural light from enlarged windows achieved through a custom engineered solution that employs aluminum beams and sandwiched glass construction techniques from classed vessels to deliver twenty eight percent greater visibility and incoming light, a 2014 innovation. Centerline rests a “floating” king sized berth with a motion insulating innerspring mattress, flanked by two “floating” nightstands with marble countertops. Storage is abundant with built in cabinetry at the entry, a bureau with chest of drawers to starboard, and a vanity with chair and storage to port. Closets are generous and intelligent: a port walk in enlarged by eighty five percent by utilizing space from the forward staterooms and under the floorboards, and a starboard hanging closet increased by eighteen percent by

employing space beneath the forward staterooms' floorboards and stairs, both new for 2014. A cedar lined, twin full height hanging locker with automatic lighting complements a hidden safe in the hanging locker, while a custom headboard with recessed indirect lighting completes the ambiance.

Entertainment arrives via a 50 inch LED TV with A/V system and a dedicated subwoofer, and marble countertops grace the TV cabinet and the port and starboard cabinets, echoing 2014 design cues from the 120. The ensuite bath is spa like, featuring a spacious stone shower centrally dividing the his and hers layout, each side with a private head and a vessel sink atop matching white stone and wooden vanities with positive latch cabinetry. The master bathroom window has been significantly enlarged with updated cabinetry to take advantage of an additional three hundred twenty percent window visibility versus the previous portlight, and heated marble floors add indulgent warmth.

The VIP stateroom lies forward and below at the end of its private hallway and mirrors many of the primary suite's luxuries with an ensuite head, a full cedar lined locker, and custom fitted cabinetry. A queen size berth with an innerspring mattress provides plush comfort and abundant storage beneath, while a 32 inch LED TV with satellite receiver is mounted on the port wall beside the door, complemented by an AV package. Drawers under the berth add to the generous storage, ensuring VIP guests feel thoroughly indulged.

Port and starboard guest staterooms sit between the VIP and the primary, designed with hallmark Ocean Alexander flexibility. Twin berths slide inboard to outboard to create a queen in seconds, with a custom nightstand serving either configuration. Each guest space enjoys an ensuite head, cedar lined hanging lockers, floating nightstands with marble countertops, and rich detailing in book matched woods and marquetry across cabinet doors. Entertainment is provided by 22 inch LED TVs and an AV package in each room, cocooning guests in comfort and choice.

Every head reflects elevated craftsmanship with wood paneling and cabinetry, marble floors, and marble countertops with a china sink, as well as marble countertops and backsplash in the heads with a bone china sink. A seamless fiberglass stall shower with a one piece glass door delivers an industry leading, leak resistant design that protects against moisture intrusion behind panels—an enduring, unique Ocean Alexander feature. The shower door is framed in marble and uses “crystal clear” glass custom made for Ocean Alexander as part of the proprietary Crystal Shower introduced in 2014, providing superior transparency and reflectiveness. Practical touches include a cabinet with mirrored door above the sink, low noise extraction fans in every head for efficient air management, a Planus toilet system throughout, and custom bathroom fixtures that elevate both function and form.

# CONTACTS

---

Shestakov Yacht Sales is a brokerage company specializing in the sale and service of yachts worldwide. The company offers services for buying and selling both new and used motor yachts, sailing vessels, and luxury superyachts. They also provide yacht registration, insurance, technical maintenance, crew selection, and charter organization services across the U.S., Canada, Latin America, the Caribbean, and the Bahamas.

The founder and lead broker of the company is Andrey Shestakov, a licensed and certified expert with extensive experience in marine engineering and shipbuilding.

The company has an extensive network of partnerships with major yacht manufacturers worldwide and provides services in multiple languages, including Russian, Ukrainian, Spanish, and English. The office is in Dania Beach, Florida, USA.

For more information and to view available yachts, you can visit the company's official website: <https://shestakovyachtsales.com>

## Contact details

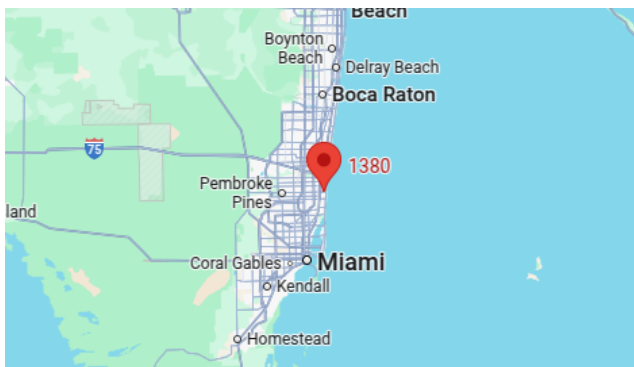
---

**Phone:** +1(954)274-4435

**Email:** [andrey@shestakovyachtsales.com](mailto:andrey@shestakovyachtsales.com)

## Address

---



1380 Weeping Willow Way, Hollywood,  
Florida 33019