

SOVEREIGN - BURGER BOAT COMPANY



Builder: [BURGER BOAT COMPANY](#)

LOA: 100' 0" (30.48 m)

Year Built: 1966

Beam: 21' 0" (6.66 m)

Model: N/A

Max Draft: 18' 1" (5.50 m)

Price: \$1,950,000 USD Subject to change.

Cruising Speed: 12 Knots (13.81 MPH)

[See full listing on our website](#)

Location: Mount Desert, United States

Max Speed: 14 Knots (16.11 MPH)

TABLE OF CONTENTS

OVERVIEW	3
SPECIFICATIONS	4
Basic Information	4
Dimensions	4
Speed, Capacities and Weight	4
Accommodations	5
Hull and Deck Information	5
Engine Information	5
GALLERY	6
DETAILED DESCRIPTION	14
CONTACTS	24

OVERVIEW

SOVEREIGN is a magnificent 100' (30.48m) Burger motor yacht, first introduced in 1966 and splendidly refurbished in 2020, featuring a range of upgrades implemented in recent years. This opulent vessel provides accommodations for 7 guests within 4 tastefully designed staterooms, along with living quarters for 4 crew members in 3 cabins. For those exploring yacht sales at the current boat location, this breathtaking yacht for sale offers a unique chance to acquire a vessel that blends timeless elegance with contemporary refinement.

SPECIFICATIONS

Basic Information

Category:
Motor yachts

Year Built:
1966

Model Year:
1966

Country:
United States

Dimensions

LOA:
100' 0" (30.48 m)

Max Draft:
18' 1" (5.50 m)

Beam:
21' 0" (6.66 m)

Speed, Capacities and Weight

Cruise Speed:
12 Knots (13.81 MPH)

Water Capacity:
3600 Gallons

Max Speed:
14 Knots (16.11 MPH)

Fuel Capacity:
6000 Gallons

Gross Tonnage:
150 Pounds

Accommodations

Sleeps:

6

Crew Cabin:

3

Total Heads:

5

Crew Berths:

3

Hull and Deck Information

Hull Material:

Aluminum Yachts

Hull Designer:

Jack Hargrave

Deck Material:

Aluminum

Interior Designer:

Jack Hargrave

Hull Configuration:

Full Displacement

Engine Information

Engines:

2

Engine Type:

Inboard

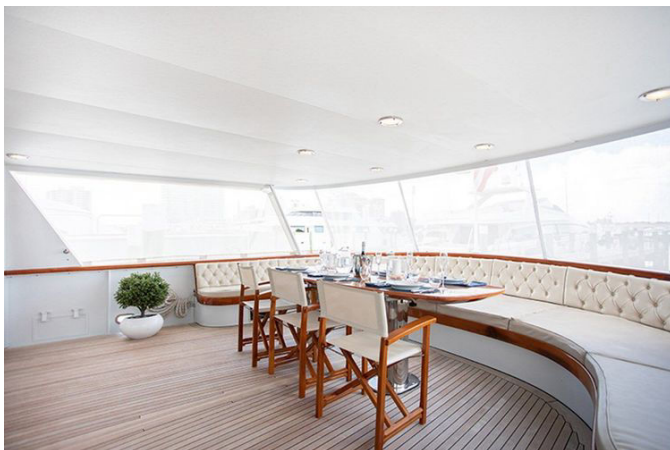
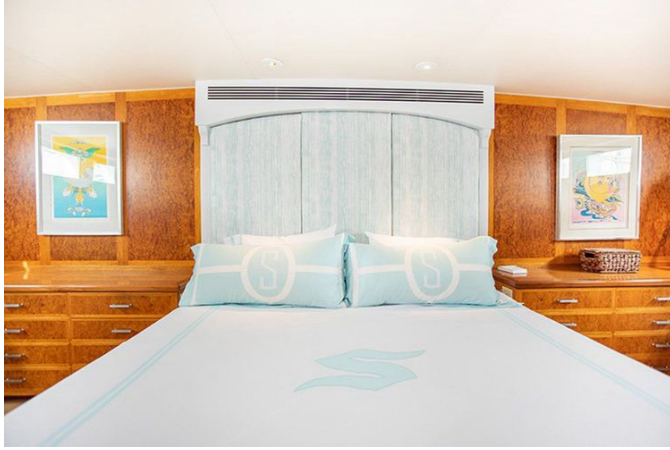
Manufacturer:

Cummins

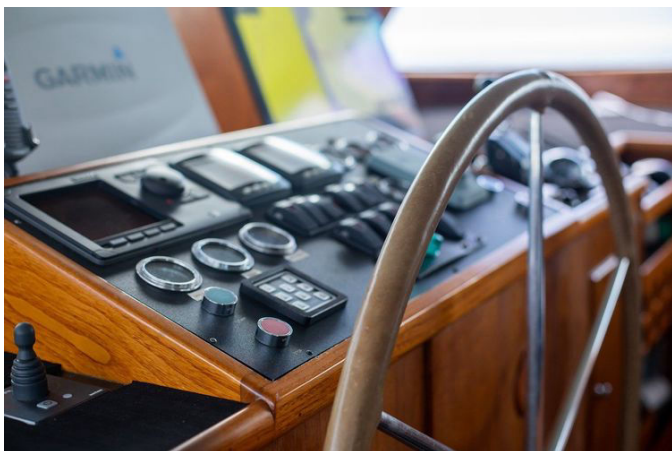
Fuel Type:

Diesel

GALLERY

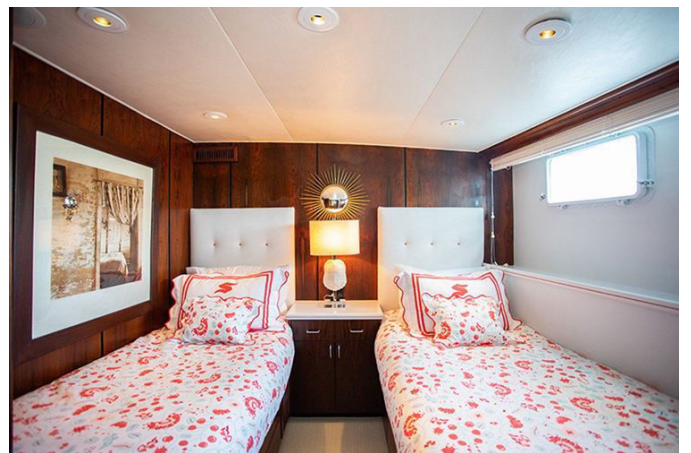
















DETAILED DESCRIPTION

Section name

SOVEREIGN is a breathtaking classic yacht crafted by the esteemed designer Jack Hargrave and constructed by Burger. This magnificent vessel has been lovingly preserved and enhanced over the years by attentive owners and a skilled crew, ensuring it remains in immaculate condition. With accommodations for up to eight guests in four elegantly designed ensuite staterooms, SOVEREIGN is prepared for immediate enjoyment, needing only the personal touches of a new owner.

In recent years, almost every system, finish, and feature on SOVEREIGN has been upgraded or refined. The yacht is equipped with new Cummins QSM11 main engines and Onan 55kw generators, installed in 2007, guaranteeing dependable and efficient operation. The interior has been revitalized, featuring a custom bar area at the front of the salon, enhancing its luxurious atmosphere. The navigational electronics and communication systems have been completely modernized, offering cutting-edge technology for smooth sailing.

The exterior of SOVEREIGN is equally remarkable, with a redesigned custom swim platform and stern boarding stairs, providing easy access to the water. The upper flybridge has been converted into a new lounging area, ideal for relaxation and taking in panoramic views. No expense has been spared in maintaining SOVEREIGN's striking appearance and ensuring it is ready for immediate use. This yacht embodies timeless elegance and modern enhancements, delivering an unmatched yachting experience.

Guest accommodations

The distinctively styled elegant interior of SOVEREIGN has been meticulously refitted by American Custom Cabinetry and Ellen Kavanaugh Interiors of Palm Beach, creating a space that is luminous, open, and refreshing, distinguishing it from many other classic yachts. The main salon provides a welcoming atmosphere for socializing, featuring a newly installed custom bar area at the forward section and a concealed TV for movie nights. The aft deck is crafted for leisure, with an oversized lounging settee and a beautifully designed sliding high-low dining table finished in high-gloss teak. The formal dining room has been ingeniously transformed into an "eat-in-kitchen," offering a flexible dining area. The galley has been enhanced with top-of-the-line stainless steel appliances, providing excellent facilities and ample preparation and serving space for any chef.

Below deck, SOVEREIGN accommodates eight guests in four traditionally styled ensuite staterooms. The owner's midship stateroom boasts a centerline king bed, an ensuite updated with an oversized stall shower in 2019, two large hanging lockers, ample drawer and locker storage, a desk to starboard, a settee to port, and five opening ports, all set on a carpeted floor. The starboard mid stateroom features a custom bed larger than a twin, an ensuite with a shower, a hanging locker, a bookcase, two opening ports, a Vizio TV, and a carpeted floor. The port aft guest stateroom includes two twin beds, an ensuite with a bathtub and shower, a large hanging locker, two opening ports, and a carpeted floor. Similarly, the starboard aft guest stateroom is equipped with two twin beds, an ensuite with a shower, a large hanging locker, two opening ports, and a carpeted floor. Crew accommodations for five are provided in three staterooms located below and forward, ensuring the yacht operates comfortably and efficiently.

Crew accommodations

The crew quarters on SOVEREIGN are meticulously crafted to provide both comfort and privacy for up to five crew members. Accessible through a private passageway between the galley and the forward dining salon, these quarters feature a spacious L-shaped settee and table, offering plenty of room for relaxation and dining, along with direct access to the yacht's engine room. To further ensure privacy, a compact "convertible" galley has been added to the engineer's cabin. A comprehensive entertainment system, including a Samsung TV with DirectTV satellite receiver, a Sony PlayStation, and a Sony stereo, keeps the crew entertained during their leisure time. Additionally, a large dry bilge storage area equipped with five custom refrigerators and freezers is available for storing supplies, dry goods, and food.

The captain's cabin, situated on the port side, includes a single bed with storage drawers underneath, an ensuite with a shower, a vinyl floor, reading lamps, a Pyle TV with DirectTV receiver, a hanging locker, a portlight, and an upholstered stool with a vanity. The forward cabin is fitted with two twin bunks, sharing an ensuite with a shower, two reading lamps, four portlights, a large overhead hatch with a screen on the centerline, a vinyl floor, a Samsung TV with DirectTV receiver, and an anchor chain pipe leading to the chain locker below the floor. The starboard crew cabin, which also serves as a crew galley, contains a twin bunk, an ensuite with a shared shower, a portlight, a Sharp carousel microwave oven, a GE refrigerator, a stainless sink with hot and cold faucet, a Summit 2-burner electric induction cooktop, and a stainless counter.

The crew mess and lounge area is a multifunctional space featuring an L-shaped settee, a dining table with chairs, and a custom solid surface table. The dining table can be adjusted to the level of the settee to create an additional double berth. The area is completed with a vinyl floor and includes bookshelves, a Weems and Plath clock, a coffee maker, and Miele full-size stackable washer and dryer units, ensuring the crew has all the necessary

amenities for a comfortable stay on board.

Salon

The salon aboard SOVEREIGN is an opulent and welcoming area, crafted for both leisure and entertainment. The room is adorned with a carpeted floor, adding warmth and comfort underfoot. A large concealed TV with a DirectTV satellite receiver, a BlueRay disc player, and Apple TV offers a diverse array of entertainment choices for guests. The audio experience in the salon is elevated by a stereo system featuring a Bluetooth receiver, allowing for effortless music streaming.

Two sizable middle windows can be adjusted up and down, complete with screens, to let fresh air circulate through the space while maintaining comfort. At the front of the salon, a custom bar area with seating provides an ideal spot for mingling and enjoying drinks. The bar is fitted with a Thermadore stainless steel drink refrigerator, ensuring beverages are always cool and ready to serve. The salon is elegantly furnished and decorated with various pieces updated in 2018, creating a sophisticated and modern ambiance that enhances the yacht's overall aesthetic.

Aft salon and lazarette

The aft salon and lazarette on SOVEREIGN are crafted to blend practicality with luxury, creating an ideal setting for both entertaining and unwinding. This area is outfitted with three Sub Zero under-counter refrigerators, providing plenty of space for storing drinks and perishables. Additionally, a Manitowoc ice maker, capable of producing 55 pounds of ice daily, and a Frigibar chest freezer add further convenience for hosting guests.

The space includes two distinct settees with tables, accommodating dining for up to ten guests, making it perfect for social events or intimate dinners. A

centerline door offers easy access to the cockpit, seamlessly merging indoor and outdoor areas. Entertainment is well-provided with a 40-inch Samsung TV, equipped with a DirectTV satellite receiver offering channels from both the US and Latin America. The RTI entertainment system control ensures that managing audio and visual experiences is both intuitive and efficient, enhancing the overall atmosphere of the aft salon and lazarette.

Galley

The galley aboard SOVEREIGN is a culinary enthusiast's paradise, outfitted with premium appliances and crafted for both practicality and elegance. At the center of the galley is a Sub-Zero refrigerator, offering generous storage for fresh produce. The Thermador induction oven, paired with a 4-burner stovetop, provides precise cooking control, while the Bosch stainless steel dishwasher makes cleaning effortless. Two stainless steel sinks, each with an Insinkerator, enhance the kitchen's functionality, complemented by a fresh water filter for pure, clean water.

For added convenience, the galley features an LG microwave oven and a Hoshizaki stainless steel ice maker, ensuring all culinary needs are met. A Nespresso coffeemaker is available for those who enjoy a perfect cup of coffee. The stainless steel countertops not only contribute a sleek, modern aesthetic but also offer a durable and easy-to-maintain surface.

Natural light fills the galley through four round portlights and two large roll-down windows with screens, while a large overhead hatch with a screen provides additional ventilation. The space is elegantly completed with a Weems and Plath clock, adding a touch of classic maritime charm to this contemporary culinary space.

Pilothouse / electronics

The pilothouse of SOVEREIGN serves as a cutting-edge command center, equipped with a thoroughly modernized suite of electronics that guarantees both safety and efficiency while traversing the seas. A spacious aft bench seat offers comfort for those on duty, while ample chart areas and drawers provide plenty of room for navigation planning. The pilothouse is fitted with three large Garmin displays and a Garmin tri-data display, delivering comprehensive information at a glance. Communication is seamless with a Garmin VHF and three Icom handheld VHF's, complemented by a Simrad remote VHF.

For precise navigation, the pilothouse includes a Simrad AP70 autopilot, Simrad 535 Jog control, and a Simrad RI35 rudder angle indicator. The Dockmate yacht control system, installed in 2019, along with Micro-commander electronic throttle controls, further enhances maneuverability. Entertainment and communication are supported by a Fusion stereo system, updated in 2020, and a KVH Mini 8 Satellite installed in 2021, along with a Trac Phone V3 for dependable connectivity. The Agean Wi-Fi antenna, added in 2023, ensures robust internet access.

Additional features include a magnetic compass, an HP Office Jet printer for onboard documentation, and three wipers for clear visibility in challenging weather. The pilothouse is also equipped with a Flir system for improved night vision and an Ocean Signal Class II EPIRB for emergency situations. This comprehensive suite of electronics and controls makes the pilothouse of SOVEREIGN a state-of-the-art hub for navigation and communication.

Fly bridge / boat deck

The fly bridge and boat deck of SOVEREIGN seamlessly blend luxury with functionality, creating an ideal setting for both relaxation and entertainment. Outfitted with two Marquipt davits capable of lifting 1500lbs, the deck

facilitates easy handling of tenders and equipment. Safety is paramount, with two Safe-Sea life rafts for eight people each, readily accessible. For those who enjoy cooking outdoors, a custom stainless steel propane grill and wet bar, installed in 2021, offer an excellent setup for alfresco dining.

The aft teak deck, refreshed in 2022, adds elegance and warmth to the area, while a custom sun awning and Bimini, also added in 2021, provide shade and comfort. The deck is furnished with a sofa and lounge chairs, updated in 2018, creating a welcoming atmosphere for guests to relax. For a more indulgent experience, two soaking tubs installed in 2022 offer a luxurious way to unwind while taking in the views.

Additional features include a freshwater washdown spigot for easy cleaning, a smokestack with dry stack exhaust for the main engine and generator, and two chrome cowl vents for ventilation. The Lifesling Overboard rescue system is also installed, ensuring safety and peace of mind for everyone on board. This blend of amenities and safety features makes the fly bridge and boat deck of SOVEREIGN a remarkable space for both leisure and practicality.

Hull and deck features

SOVEREIGN features expansive walkaround teak decks leading to a generous foredeck, complete with sheltered seating for guests and plenty of room for windlass operation. The yacht's unusually large aft deck offers lounging and dining spaces typically seen on much larger yachts, while a newly customized swim platform with boarding stairs provides easy water access.

Built with an aluminum hull and superstructure, SOVEREIGN includes a custom aluminum swim platform with teak decking, added in 2022, and vinyl-coated stainless steel cable lifelines with removable stainless stanchions on the platform. A five-step transom ladder made of teak and stainless steel, along with custom stern stairs to the swim platform installed in 2020, enhance accessibility. The custom flybridge stairs, added in 2021, and a custom table

with high-low/in-out function, introduced in 2019, further enhance the yacht's functionality and style.

The aft deck is outfitted with cushions updated in 2023, a sunshade and side panels added in 2020, and two aft deck wing doors. A custom side boarding passerelle, installed in 2019, and numerous fire station points ensure safety and convenience. The pilothouse is equipped with a sunscreen, updated in 2023, and the Ideal windlass with capstan, wildcat, and vertical winch offers reliable anchoring capabilities. A custom anchor deployment bow roller system for the plow anchor, added in 2021, and a custom bow seat with awning/bimini, introduced in 2023, enhance the yacht's anchoring and seating options.

Additional features include a large sunpad on the forward coach roof, a freshwater washdown spigot, a teak table with chairs, and an 8-inch ship's bell. The yacht is equipped with two Fortress FX125 anchors with 300 feet of chain rode, a hatch to the chain locker, and a hatch to the forward cabin, ensuring both functionality and elegance in its design.

Machinery and electrical

SOVEREIGN is driven by powerful Cummins QSM11-M1 D-rated diesel engines, each delivering 580hp, with the port engine recording 2453 hours and the starboard engine 2306 hours as of October 2024. These engines are coupled with Twin Disk 3.0:1 reduction gears and Centa anti-vibration couplings, ensuring seamless and efficient performance. The yacht is fitted with Onan 55KW 1800 RPM 120/240 60 cycle generators, with the port generator at 4774 hours and the starboard at 2306 hours as of October 2024. A new sound shield was added to the starboard generator in 2020 to improve noise reduction. Fuel management is optimized with dual Racor 1000 fuel filter systems for all machinery, and a custom-designed dry stack exhaust system further boosts performance. The SeaRecovery watermaker and two Headhunter Mach V

domestic freshwater pumps guarantee a steady supply of fresh water, supported by 50-gallon and 80-gallon Torrid stainless water heaters. The yacht's sanitation needs are addressed by a Headhunter Tidal Wave marine sanitation device with associated pumps.

Climate control is maintained by a marine air conditioning system with two 72,000 BTU compressors, replaced in 2021 and 2023, featuring variable frequency drives for enhanced efficiency. Stability is ensured by Quantum stabilizer actuators on both port and starboard sides, and maneuverability is improved by a Vetus electric bow thruster, with its batteries replaced in 2023. The starting and house batteries were replaced in 2022, ensuring a dependable power supply.

SOVEREIGN is equipped with two 100 Amp shore power inlets with transformers, three Mastervolt Mass 24/50 battery chargers, and a Professional Mariner Pro 300 battery charger, ensuring efficient and reliable electrical management throughout the vessel. This comprehensive machinery and electrical setup ensures that SOVEREIGN operates smoothly and efficiently, providing a comfortable and reliable experience for all on board.

Broker remarks

SOVEREIGN, initially launched as TITAN, was the largest yacht ever built in aluminum at the time of her creation. This innovative material choice, advocated by her designer Jack Hargrave, made her 30,000 pounds lighter than if constructed from steel. This weight reduction allows for a shallower draft, making her ideal for navigating the waters of the Bahamas, and enables her to achieve the same performance with about 15 percent less horsepower.

Her interior was considered extravagant for her time, originally featuring two full beam staterooms at the fore and aft, along with a small "emergency stateroom" or starboard mid stateroom. Over the years, the full beam aft stateroom was divided, and an additional ensuite head was added,

transforming SOVEREIGN into the four-stateroom yacht she is today. The original Carpathian elm burl and Brazilian rosewood remain in pristine condition, adorning the staterooms, while the main deck and salon continue to feature modern and crisp white paneling. Reflecting her initial decor, SOVEREIGN is furnished with sleek, contemporary mid-century modern pieces that add vibrant pops of color throughout. Her aft deck is notably equipped with unusually deep lounge seating surrounding the table, providing a unique space for relaxation and socializing.

It is extremely rare to find a yacht that has been so meticulously maintained and continuously updated by all her owners. SOVEREIGN is in exquisite condition and truly needs to be seen to fully appreciate all she has to offer. She comes highly recommended by her broker, who attests to her outstanding quality and timeless appeal.

Exclusions

When contemplating the acquisition of SOVEREIGN, it is essential to recognize that certain items are excluded from the sale. Specifically, any artwork and personal belongings that may be on board during the viewing are not part of the transaction. These items belong to the current owner and will not be included in the yacht's sale package. Potential buyers should be informed of these exclusions to clearly understand what is encompassed in the purchase.

CONTACTS

Shestakov Yacht Sales is a brokerage company specializing in the sale and service of yachts worldwide. The company offers services for buying and selling both new and used motor yachts, sailing vessels, and luxury superyachts. They also provide yacht registration, insurance, technical maintenance, crew selection, and charter organization services across the U.S., Canada, Latin America, the Caribbean, and the Bahamas.

The founder and lead broker of the company is Andrey Shestakov, a licensed and certified expert with extensive experience in marine engineering and shipbuilding.

The company has an extensive network of partnerships with major yacht manufacturers worldwide and provides services in multiple languages, including Russian, Ukrainian, Spanish, and English. The office is in Dania Beach, Florida, USA.

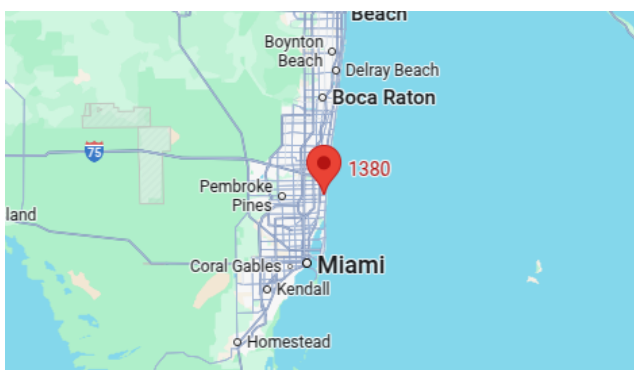
For more information and to view available yachts, you can visit the company's official website: <https://shestakovyachtsales.com>

Contact details

Phone: +1(954)274-4435

Email: andrey@shestakovyachtsales.com

Address



1380 Weeping Willow Way, Hollywood,
Florida 33019