

## ENDLESS SUN - AZIMUT YACHTS



**Builder:** [AZIMUT YACHTS](#)

**LOA:** 100' 0" (30.48 m)

**Year Built:** 1999

**Beam:** 24' 0" (7.32 m)

**Model:** N/A

**Max Draft:** 23' 0" (7 m)

**Price:** \$1,699,000 USD Subject to change.

**Cruising Speed:** 12 Knots (13.81 MPH)

[See full listing on our website](#)

**Location:** Palm Beach, United States

**Max Speed:** 18 Knots (20.71 MPH)

# TABLE OF CONTENTS

**OVERVIEW ..... 3**

**SPECIFICATIONS ..... 4**

    Basic Information ..... 4

    Dimensions ..... 4

    Speed, Capacities and Weight ..... 4

    Accommodations ..... 5

    Hull and Deck Information ..... 5

    Engine Information ..... 5

**GALLERY ..... 6**

**DETAILED DESCRIPTION ..... 18**

**CONTACTS ..... 31**

## OVERVIEW

---

Motor Yacht Endless Sun is a remarkable luxury vessel crafted for exploring the stunning waters of the USA and beyond. Impeccably maintained and ready for immediate use, she is fully outfitted to provide unforgettable experiences for you and your guests. Spanning an impressive 100 feet, this yacht boasts five lavish cabins along with crew quarters, highlighting exquisite Italian craftsmanship and contemporary elegance.

Built by Azimut Benetti S.p.A. in Viareggio, Italy, in 1999 and recently refurbished between 2021 and 2023, this 100-foot luxury motor yacht is adorned with rich wood finishes, plush leather upholstery, and sophisticated stonework, offering an accessible entry into the superyacht lifestyle without sacrificing luxury.

Her generous 24-foot beam ensures ample interior space while allowing for expansive walk-around decks, facilitating easy navigation around the yacht's exterior.

Endless Sun accommodates up to 10 guests in five beautifully appointed staterooms, including (2) King, (1) Queen, and (2) twin cabins. Each stateroom is equipped with an ensuite bathroom, with the Owner's Suite featuring dual sinks and a spacious walk-in closet. Additionally, there is room for up to 4 crew members in two forward staterooms, each with its own ensuite bathroom.

Highlighted features of this yacht for sale include a vast upper deck ideal for entertaining, a generously sized main salon, an additional dining area at the aft, a foredeck lounging and sunbathing space, and a beach club/garage that opens up for water activities. The yacht also boasts a fully equipped galley and cutting-edge electronics in both the pilot house and flybridge control areas, making it a prime choice for those looking to buy a yacht in the current boat location. Explore yacht sales in the current boat location and seize the opportunity to own this magnificent vessel.

# SPECIFICATIONS

---

## Basic Information

---

**Category:**  
Motor yachts

**Year Built:**  
1999

**Sub category:**  
Motor Yacht

**Country:**  
United States

**Model Year:**  
1999

## Dimensions

---

**LOA:**  
100' 0" (30.48 m)

**Max Draft:**  
23' 0" (7 m)

**Beam:**  
24' 0" (7.32 m)

## Speed, Capacities and Weight

---

**Cruise Speed:**  
12 Knots (13.81 MPH)

**Water Capacity:**  
528 Gallons

**Max Speed:**  
18 Knots (20.71 MPH)

**Fuel Capacity:**  
3646 Gallons

## Accommodations

---

**Total Heads:**

6

## Hull and Deck Information

---

**Hull Material:**

Fiberglass and Plastic Yachts

**Hull Designer:**

N/A

**Deck Material:**

Fiberglass

**Interior Designer:**

N/A

**Hull Configuration:**

N/A

## Engine Information

---

**Engines:**

2

**Engine Type:**

Inboard

**Manufacturer:**

MTU

**Fuel Type:**

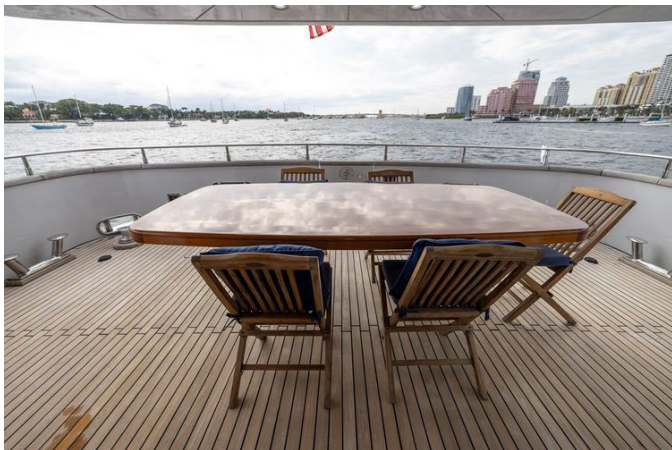
Diesel

# GALLERY

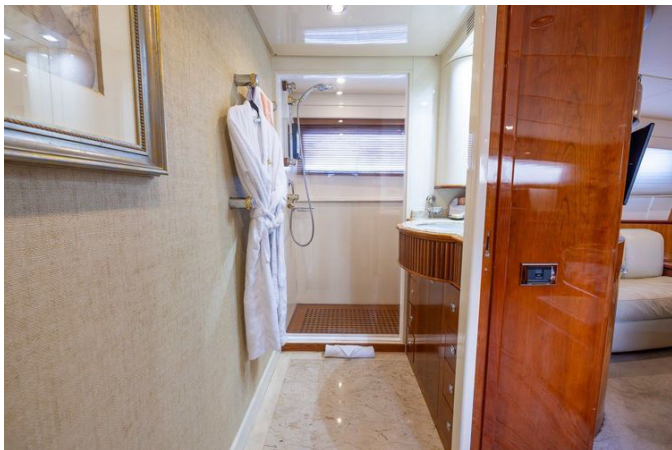


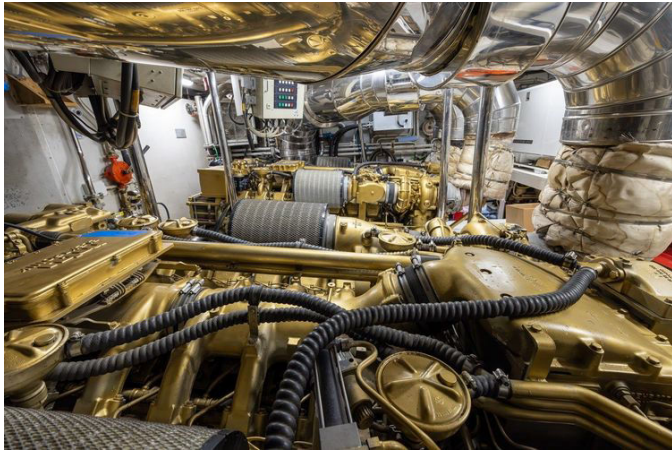




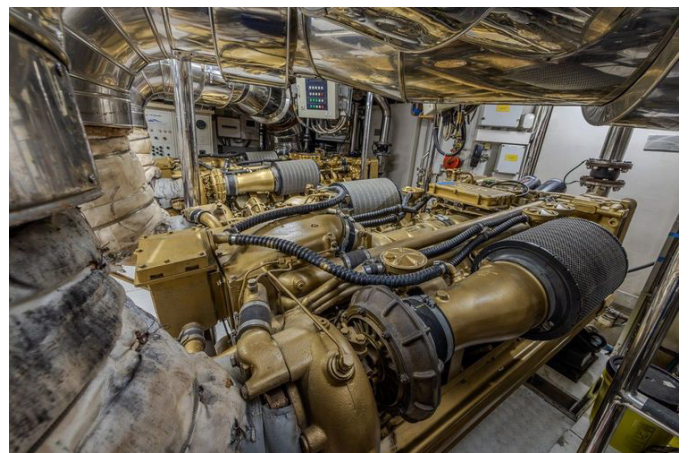


















---

# DETAILED DESCRIPTION

---

## Key features

---

This exquisite yacht is crafted with both leisure and entertainment at its core, featuring an expansive sundeck perfect for hosting events and savoring the vast ocean. The generously sized and elegantly furnished main salon creates a welcoming environment for unwinding and mingling. For open-air dining, the aft deck dining area provides a charming venue, while the foredeck is perfect for lounging and sunbathing, allowing you to bask in the sun with elegance.

The yacht includes a beach club and garage, accommodating all your aquatic adventure needs, ensuring endless excitement and exploration on the water. Culinary aficionados will delight in the fully equipped galley, designed to meet all your culinary desires. Navigational and operational excellence is achieved through the modern, cutting-edge helm and flybridge electronics, guaranteeing a seamless and pleasurable sailing journey. This yacht effortlessly merges opulence, practicality, and contemporary technology, making it a standout choice for those in pursuit of the ultimate nautical experience.

## Recent updates (2022/2023)

---

This yacht has received significant upgrades in 2022 and 2023, ensuring it is outfitted with cutting-edge technology and amenities for an unmatched maritime journey. The engines have been enhanced with new pistons and sleeves from RPM Diesel, and a cloud-based SuperYacht Support maintenance system has been implemented for effortless upkeep. The stabilizer system has been upgraded with new NAIAD stabilizers, and new anchor windlasses have been installed along with a chain wash-down system. The yacht now boasts

high-efficiency 5-blade propellers and added line cutters for superior performance.

Six of the eight heads have been upgraded with self-contained macerator systems, and the black water tank and sensor have been renewed. Both 30kw gensets were replaced in 2019/2020, ensuring a dependable power supply. The interior has been revitalized with new decor, carpets, carpet runners, and white leather couches, complemented by a new window shade system in the main salon. Ten air handler units and two chillers have been replaced, and a new crew shower has been added for enhanced comfort.

The yacht's maneuverability has been improved with a new upgraded high-power bow thruster and bow thruster lines for increased thrust. A new watermaker has been installed, and the teak deck on the upper level has been replaced, featuring a compass rose inlay. Navigation and communication systems have been modernized with new Garmin units in the wheelhouse and flybridge, new VHF radios, and a Garmin camera system from aft to wheelhouse. A FLIR night vision camera system and a new spotlight system on both port and starboard sides have been added for enhanced visibility.

The MTU controls have been replaced and renewed, and two new water heaters have been installed. The galley has been converted to refrigerators, with two additional freezers added in the garage, and new galley appliances have been fitted. High-end stainless steel washer dryers have been installed in the garage, and a 72-inch TV now graces the main salon, with new TVs in all five guest quarters. The upper deck features a new stereo system with Fusion and XM capabilities.

The yacht is equipped with a new Atlas power system for global power compatibility, renewed water-tight doors, and a new refrigerator and modern electric grill on the sundeck. New canvas covers and blinds have been added to the upper deck and main salon, respectively. For water sports enthusiasts, a jet ski spark and Seabob F5 have been added. The yacht has undergone a

complete thru-hull replacement from stem to stern, and the boarding ladder system has been replaced. Underwater lights have been renewed, and a Starlink internet system has been installed for seamless connectivity.

The wet exhaust section of the risers has been renewed, and a new engine fan air intake/exhaust system has been installed. The yacht's exterior has been refreshed with new bottom paint and prop speed by Rybovich, backed by a two-year warranty valid until January 2025. These extensive updates ensure that this yacht is not only modern and luxurious but also ready for any adventure on the high seas.

## Main salon

---

As you step into the main salon from the aft deck through the stylish double curved sliding glass doors, you are immediately drawn in by the expansive space and the flood of natural light pouring through the oversized windows on both the port and starboard sides. These windows are cleverly shaded by walk-around overhangs to shield against direct sunlight, while an adjustable blind system provides privacy and allows for light customization to suit different moods.

To the port side, there is a chic wet bar with a marble top, complete with a glasses rack, ice machine, and sink, ideal for hosting guests. Both the port and starboard sides are adorned with elegant white leather couches that are stain-resistant and easy to care for, centered around an adjustable coffee table. Moving forward in the salon, a large 72-inch frame TV screen acts as a canvas for displaying art or setting the ambiance with scenic visuals. At the far end of the main salon, the dining area awaits, offering a seamless transition for dining and socializing.

Looking aft, a second TV is available for those days when multiple shows or sports events are on, with the TV and stereo equipment neatly tucked away behind a rolling cabinet door. The salon also offers ample storage for various

board games, ensuring entertainment options for all guests.

The main salon is further enhanced by two large crescent-shaped designer upholstered sofas, showcasing exquisite inlaid wood craftsmanship. Ample built-in cabinet storage is available, along with a wooden three-part cocktail table. The designer carpet and carpet protector add a touch of luxury, while large windows with adjustable privacy shades ensure comfort and discretion. LED overhead lighting and mood floor lighting create a welcoming atmosphere, making the main salon a perfect blend of elegance and functionality.

## Dining area

---

Positioned at the front of the main salon, the dining area is an elegant space centered around a stunning dining table that comfortably seats up to eight guests. This table is adorned with intricate inlaid wood, infusing a sense of sophistication into every meal. The lighting in this area is adaptable, allowing for adjustments to fit any occasion, be it a relaxed breakfast, a formal dinner, or even a workspace for meetings or projects.

Next to the expandable dining table are cabinets specifically crafted for storing a premium dining set, ensuring that everything required for an impeccable dining experience is easily accessible. The dining area is enhanced by eight chairs, providing ample seating for guests. Furthermore, there is a wealth of built-in cabinet storage, offering plenty of room to keep dining essentials neatly organized and within reach. This dining area effortlessly blends practicality with elegance, making it an ideal venue for both intimate gatherings and larger celebrations.

## On deck day head

---

The on-deck day head and powder room is thoughtfully positioned forward of the main salon on the starboard side, combining practicality with elegance.

This space is tastefully designed with dark wood accents and boasts a marble sink and flooring, crafting a luxurious ambiance. It acts as a convenient facility for guests entering from the main salon, ensuring easy access while making a memorable impression with its refined design. This carefully situated day head not only boosts the yacht's functionality but also enhances its overall visual appeal, making it a standout feature for any discerning guest.

## Galley

---

The well-appointed galley is strategically located forward of the main salon on the port side, ensuring effortless service to both the main salon and dining area. A door offers direct access for serving, which can be closed during meal preparation to preserve privacy and efficiency. For the crew, a separate door leads to the exterior walk-around deck, allowing for smooth operations without interrupting guests.

This galley features ample countertop and storage space, with two spacious granite countertops that blend functionality with elegance. It is fully equipped with all essential appliances, ensuring that culinary needs are easily met. The stainless steel sink with a faucet adds a modern and practical touch to the area.

Along the entrance, there is a set of large 4-bay refrigerators, which were initially a combination of refrigerator and freezer but have been converted to refrigeration only. To meet additional storage demands, a large capacity stand-up freezer and an extra stand-up refrigerator have been added to the garage. This galley is designed to fulfill all culinary requirements while upholding a high standard of luxury and convenience, making it a vital feature of the yacht.

## Beach club/garage

---

The Endless Sun boasts a versatile aft transom garage that cleverly folds down to become a lavish beach club. This feature creates your own waterfront entertainment space, whether you're anchored in a tranquil bay or docked at a lively marina. Access from the aft deck is made easy with a hydraulically deployed passerelle, ensuring a smooth transition to your sea-level oasis.

In this exclusive waterside retreat, you can relax and partake in a range of activities. Whether you enjoy paddleboarding, swimming, floating, or just dipping your feet in the water, the beach club provides the perfect backdrop. The crew can effortlessly launch the jet ski from its remote-controlled slider, adding a thrill to your day on the water.

This area is also perfect for sunbathing, boarding a tender, or simply soaking in the stunning views. Inside the garage, there is vertical storage for dive tanks, various water toys, and accessories, ensuring all your aquatic adventures are well-equipped. The beach club/garage of the Endless Sun is crafted to elevate your yachting experience, blending luxury, convenience, and endless possibilities for enjoyment.

## Upstairs master stateroom

---

The Endless Sun features an on-deck master stateroom, a luxury typically found on larger yachts, providing unmatched convenience and opulence. This prime location allows for expansive windows, bathing the room in natural light and offering breathtaking views. Positioned just a few steps from the dining and main salon areas, it is perfect for those who prefer not to climb stairs each time they wish to retreat to their cabin.

The master stateroom is tastefully furnished with a queen bed, ensuring peaceful nights at sea. A built-in desk faces the port side window, offering a tranquil workspace with a view. On the starboard side, lounge seating provides

a cozy spot to unwind. The room is equipped with a TV and DVD player, along with Direct TV, for entertainment.

For storage, the stateroom includes a walk-in closet and ample additional built-in storage, ensuring plenty of space for personal items. The ensuite head features a shower and a granite sink, complemented by luxurious bed linens and bath towels. This master stateroom blends functionality with elegance, making it a highlight of the Endless Sun, ideal for those seeking comfort and style on the water.

## Vip stateroom

---

The VIP stateroom aboard the yacht provides a lavish escape for guests, blending comfort and sophistication in a tranquil environment. At the center of the room lies a queen bed, dressed with premium bed linens and bath towels, ensuring a relaxing and indulgent stay. Entertainment is easily accessible with a TV and DVD player, along with Direct TV, allowing guests to enjoy their favorite programs or films.

There is plenty of storage, with a hanging locker offering space for clothing and personal belongings. The ensuite head is fitted with a shower and sink, providing both convenience and privacy. For those who prefer complete darkness for a restful night's sleep, the stateroom includes stainless steel porthole covers that ensure total blackout.

The VIP stateroom is crafted to offer an ideal blend of luxury and practicality, making it a perfect haven for guests seeking a comfortable and private retreat on the water.

## Downstairs master stateroom

---

The downstairs master stateroom is a sanctuary of opulence and comfort, crafted to offer an exquisite escape for its residents. At the heart of this refined

space lies a king bed, dressed with luxurious bed linens and bath towels, ensuring a restful and indulgent stay. Entertainment is plentiful with a TV and DVD player, complemented by Direct TV, providing a broad array of viewing options for relaxation.

Generous storage is available with a hanging locker and a walk-in closet, facilitating easy organization of clothing and personal belongings. The ensuite head is a highlight, featuring a shower and double vanity granite sinks, offering both convenience and a touch of luxury. This master stateroom seamlessly blends functionality with elegant design, making it a perfect retreat for those seeking comfort and style on the water.

## Port twin stateroom

---

The port twin stateroom provides a welcoming and comfortable environment for guests, featuring twin berths that are ideal for hosting friends or family. Each berth is adorned with premium bed linens and bath towels, ensuring a cozy and restful experience. For entertainment, the stateroom is outfitted with a TV and DVD player, along with Direct TV, offering a wide range of viewing options to cater to all tastes.

Storage is efficiently managed with a convenient hanging locker, allowing guests to keep their belongings organized and within easy reach. The ensuite head is a practical feature, equipped with a shower and sink, providing both privacy and convenience. This stateroom seamlessly blends functionality with comfort, making it an excellent choice for those seeking a relaxing retreat on the water.

## Starboard twin stateroom

---

The starboard twin stateroom is crafted to offer a cozy and inviting atmosphere for guests, featuring twin berths that are perfect for hosting

friends or family. Each berth is adorned with high-quality bed linens and bath towels, ensuring a warm and restful stay. For entertainment, the stateroom is fitted with a TV and DVD player, along with Direct TV, providing a diverse selection of viewing options to satisfy all preferences.

Storage is effectively handled with a convenient hanging locker, allowing guests to keep their belongings neatly organized and easily accessible. The ensuite head is a practical addition, equipped with a shower and sink, offering both privacy and convenience. This stateroom effortlessly merges functionality with comfort, making it an ideal choice for those seeking a relaxing and enjoyable experience on the water.

## Crew quarters

---

The crew quarters on this yacht are meticulously designed to offer both comfort and practicality for the crew. Accessible from the foredeck, these quarters comprise two crew cabins, each featuring its own ensuite bathroom, ensuring privacy and convenience. The cabins provide versatile sleeping arrangements, allowing for either two double berths or a combination of one single berth and one double berth in an upper/lower configuration, tailored to the crew's specific requirements.

Additionally, a stall shower is situated forward, enhancing the functionality of the area. These well-equipped crew quarters are crafted to deliver a comfortable living environment, enabling the crew to carry out their duties efficiently while enjoying a restful and accommodating space.

## Aft deck

---

The aft deck of this yacht is a masterfully crafted area that seamlessly blends sophistication with practicality, making it ideal for both entertaining and unwinding. At its core is a spacious, varnished teak dining table that

comfortably accommodates up to eight guests, creating the perfect ambiance for outdoor dining and social events. The deck provides convenient access to both port and starboard sides through walk-around decks, facilitating easy navigation around the yacht.

A central boarding door opens aft, leading to steps that descend to the swim platform and garage, enhancing the space's adaptability. This well-conceived design allows for effortless transitions between dining, relaxing, and engaging in water activities, establishing the aft deck as a central hub for enjoyment and leisure on the water.

## Flybridge

---

The expansive flybridge of this yacht is crafted to deliver both practicality and comfort, making it an ideal location for both navigation and leisure. The helm station, situated to port, is outfitted with a variety of advanced features to ensure smooth sailing. A canopy provides shade from the sun, allowing for comfortable operation in diverse weather conditions. The radar arch boosts the yacht's navigational capabilities, while the autopilot system simplifies control during extended journeys.

For precise handling, the flybridge is equipped with bow thruster controls, ensuring effortless docking and navigation in confined spaces. Communication is maintained through a VHF radio, keeping you connected at all times. Additionally, the flybridge is equipped with two remotes for spotlights, enhancing visibility during nighttime operations. This well-equipped flybridge merges cutting-edge technology with thoughtful design, making it a central hub for both piloting and enjoying the open sea.

## Sundeck

---

The expansive sundeck of this yacht serves as an ideal venue for hosting

guests and taking in stunning vistas, whether anchored, cruising, or docking. With three distinct seating areas, it provides plenty of space for guests to unwind and enjoy each other's company. The sundeck includes a collapsible bimini shade that extends beyond the radar arch, offering ample shade for those who wish to avoid the sun while still relishing the fresh air.

The sundeck is outfitted with a range of amenities to enhance your experience. A BBQ is available for outdoor grilling, complemented by a fresh water service sink and a refrigerator, ensuring refreshments are always within reach. The seating arrangements are both chic and comfortable, featuring white leather U-shaped seating midship centered around a table, L-shaped seating aft, and additional L-shaped seating forward on the starboard side with a cocktail table. Enhancing the elegance of the area, the aft teak decking showcases a custom compass rose inlay, and there is convenient storage beneath the seating. This well-equipped sundeck merges luxury with practicality, making it an ideal spot for socializing and relaxation on the water.

## Foredeck

---

The foredeck of this yacht is a flexible and welcoming area, crafted to enhance your time on the water. It includes two separate seating zones, offering plenty of space for relaxation and socializing while enjoying the sweeping views. A spacious sunbathing area is fitted with bunny pad cushions, providing a cozy spot to bask in the sun.

The foredeck is also outfitted with cutting-edge anchoring equipment, featuring two hydraulic windlasses installed in 2022 and new ground tackle from the same year. The anchoring system comprises two anchors with 300-foot and 200-foot chains, each equipped with 5/8-inch Hawse pipes and a wash-down system for easy maintenance and operation.

For added convenience, the foredeck offers access to the chain locker and a

bosun locker, providing practical storage solutions for all your maritime needs. Additionally, a forward shore power connection is available, ensuring your yacht remains powered and ready for any adventure. This well-equipped foredeck merges functionality with comfort, making it an essential feature for those seeking both relaxation and efficiency on the water.

## Safety equipment

---

The yacht is outfitted with an extensive array of safety equipment to ensure the security of everyone on board. It includes two liferafts, each capable of accommodating 12 people, providing sufficient capacity for emergencies and ensuring the safe accommodation of all guests and crew. An ACR EPIRB (Emergency Position Indicating Radio Beacon) is also installed, offering a dependable method for signaling for help in emergencies, ensuring that assistance can be swiftly dispatched.

Furthermore, the yacht is equipped with a robust fire control system, designed to efficiently detect and suppress fires, thereby enhancing the vessel's overall safety. This comprehensive safety equipment package highlights the yacht's dedication to offering a secure and protected environment for all passengers, allowing them to enjoy their time on the water with complete peace of mind.

## Exclusions

---

When contemplating the acquisition of this yacht, it's essential to be aware of specific exclusions that are in place. The owner's personal belongings are not part of the sale, ensuring that these items remain with the current owner. Furthermore, the jetski and Seabob are considered optional extras. This indicates that while they are not automatically included in the sale, there is room for negotiation if the buyer wishes to include these watercraft in the purchase. These exclusions provide a level of customization and flexibility in

the final transaction, accommodating the unique preferences and requirements of the potential buyer.

# CONTACTS

---

Shestakov Yacht Sales is a brokerage company specializing in the sale and service of yachts worldwide. The company offers services for buying and selling both new and used motor yachts, sailing vessels, and luxury superyachts. They also provide yacht registration, insurance, technical maintenance, crew selection, and charter organization services across the U.S., Canada, Latin America, the Caribbean, and the Bahamas.

The founder and lead broker of the company is Andrey Shestakov, a licensed and certified expert with extensive experience in marine engineering and shipbuilding.

The company has an extensive network of partnerships with major yacht manufacturers worldwide and provides services in multiple languages, including Russian, Ukrainian, Spanish, and English. The office is in Dania Beach, Florida, USA.

For more information and to view available yachts, you can visit the company's official website: <https://shestakovyachtsales.com>

## Contact details

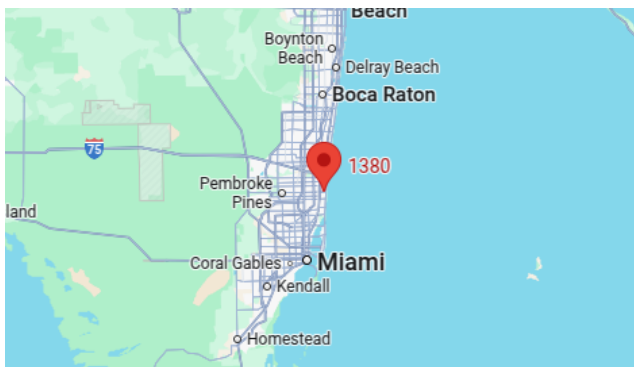
---

**Phone:** +1(954)274-4435

**Email:** [andrey@shestakovyachtsales.com](mailto:andrey@shestakovyachtsales.com)

## Address

---



1380 Weeping Willow Way, Hollywood,  
Florida 33019