

DANIELLE - HATTERAS



Builder: [Hatteras](#)

LOA: 100' 0" (30.48 m)

Year Built: 2005

Beam: 22' 0" (6.83 m)

Model: N/A

Max Draft: 20' 6" (6.25 m)

Price: \$3,999,000 USD Subject to change.

Cruising Speed: 20 Knots (23.02 MPH)

[See full listing on our website](#)

Location: Palm Beach, United States

Max Speed: 22 Knots (25.32 MPH)

TABLE OF CONTENTS

OVERVIEW	3
SPECIFICATIONS	5
Basic Information	5
Dimensions	5
Speed, Capacities and Weight	6
Accommodations	6
Hull and Deck Information	6
Engine Information	7
GALLERY	8
DETAILED DESCRIPTION	18
CONTACTS	27

OVERVIEW

A rare opportunity to own a highly personalized Elite Series 100' Hatteras, DANIELLE presents itself as perhaps the most bespoke and refined 100 foot Hatteras available. Designed for graceful lines, comfortable living, and capable performance, she melds artisanal finishes with a thoughtful, livable layout. This raised pilothouse flybridge motor yacht is turnkey and makes an immediate impression from every vantage.

Inside, the refined interior is bathed in the warm glow of satin cherry joinery, complemented by rich granite and honey onyx accents that elevate every salon and passage. Storage has been cleverly engineered to support long range, bluewater cruising, while every finish and join reflects quiet luxury and build quality befitting a premium luxury cruiser.

Accommodations are both sumptuous and sensible, arranged in a five stateroom configuration that comfortably sleeps up to ten guests. Crew quarters are generous and flexible, housing four to six crew members thanks to a versatile crew mess that converts with ease, assuring professional service and efficient operation on extended passages.

Entertaining flows naturally throughout DANIELLE. An expansive salon leads to an inviting dining area framed by oversized windows that fill the interior with natural light and panoramic ocean views. The flybridge serves as a social focal point, outfitted with a Jacuzzi, wet bar, and plush lounges, while the aft deck invites alfresco dining and relaxed conversation, ideal for formal gatherings or casual days at sea.

The galley is beautifully executed, offering abundant workspace and elegant stone surfaces that marry form and function whether preparing intimate dinners or larger receptions. This chef friendly center is designed to perform under demanding service while remaining visually impressive.

A comprehensive refit completed in 2023 and 2024 elevates DANIELLE beyond

her peers. She received a complete paint application by Jarrett Bay and full overhauls on both main engines, which now display approximately 387 hours. New interior soft goods, fresh upholstery and cushions, upgraded LED lighting and headliners, and new teak decking on the aft deck restore contemporary polish. Walkarounds, the flybridge, and non-skid areas were refreshed, appliances modernized, and seamless connectivity provided via Starlink paired with Apple TV and Music.

DANIELLE stands as a standout opportunity to own a fully customized, meticulously maintained Hatteras superyacht — an elegant flybridge motor yacht crafted for stylish entertaining, luxurious passage making, and reliable bluewater adventures.

SPECIFICATIONS

Basic Information

Category:
Motor yachts

Year Built:
2005

Sub category:
Motor Yacht

Country:
United States

Model Year:
2005

Dimensions

LOA:
100' 0" (30.48 m)

Max Draft:
20' 6" (6.25 m)

Beam:
22' 0" (6.83 m)

Speed, Capacities and Weight

Cruise Speed:

20 Knots (23.02 MPH)

Water Capacity:

840 Gallons

Max Speed:

22 Knots (25.32 MPH)

Fuel Capacity:

5125 Gallons

Gross Tonnage:

199 Pounds

Accommodations

Total Heads:

5

Hull and Deck Information

Hull Material:

Fiberglass and Plastic Yachts

Hull Designer:

N/A

Deck Material:

Fiberglass

Interior Designer:

Hatteras

Hull Configuration:

Full Displacement

Engine Information

Engines:

2

Engine Type:

Inboard

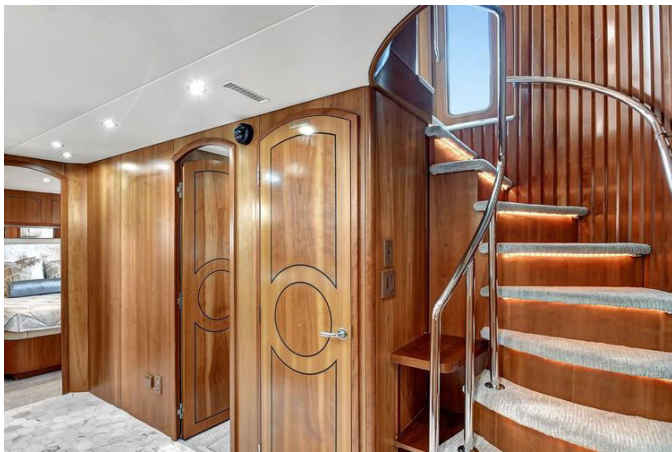
Manufacturer:

MTU

Fuel Type:

Diesel

GALLERY





















DETAILED DESCRIPTION

Dimensions

A commanding presence on the water, this yacht measures 100.00 feet in length overall, with a beam molded to 22.00 feet and a loaded draft of 6.50 feet, translating to 30.48 meters by 6.71 meters by 1.98 meters in metric. She carries 184 gross tons and a weight of 270,000 lbs., delivering true superyacht stature with confident stability. Fuel capacity is a generous 5,125 US gallons (19,400 liters), complemented by 840 US gallons (3,179 liters) of fresh water. Waste systems are equally robust, with 440 US gallons (1,666 liters) of black water, plus 110 US gallons (416 liters) each for lube oil and waste oil.

Performance is purposeful and efficient: at maximum, she runs 22.0 knots at 2,300 rpm with fuel burn per engine of 98 at 100% load; her ideal cruise settles at 20.0 knots at 1,800 rpm with fuel burn per engine of 48 at 62% load; and her economical sweet spot is 12.1 knots at 1,200 rpm, at 25% load with fuel burn per engine of 11.5. The result is a range of versatile operating profiles that blend speed, comfort, and economy with satisfying ease.

Machinery

Power comes from two 16V 2000 sixteen cylinder V diesel main engines rated at 1,800 hp each, with port serial 536 200 2713 and starboard serial 536 200 2715. In 2023, the port logged 618 SMO hours and the starboard 617 SMO hours, with total engine hours of 7,258 as of Oct. 23, 2025. The engine space presents crisp LED lighting and fresh paint. Power is transmitted through ZF 2565 gearboxes with a drive ratio of 2792:1 to shafts measuring 4'5", swinging seven blade Nibral propellers for smooth, efficient thrust. Electrical generation is assured by two 45 kW generators, port serial G030526476 and starboard serial G030526475, showing 2,894 and 2,495 hours respectively as of

Oct. 23, 2025, with shore power via two 100 Amp connections. The battery suite includes a 12 volt and 24 volt architecture with chargers, aft shore power supported by two new seventy foot cords, two new professional 2480 battery chargers, two shore power transformers, and eight D batteries dedicated to the main engines and generators. Climate control is robust and quiet thanks to three A/C compressors, each rated at 72,000 BTU (six tons), operating on 120/240 volt 60Hz and managed from a crew area switch board. Freshwater independence is elevated by watermakers rated at 1,500 gallons per day with new membranes, including a new 1500 gpd unit. Comfort underway is refined by active stabilizers with sixteen square foot fins measuring 34" x 62", plus a yacht controller. Polish and purity are ensured by a ZTC 11 water polishing system. Maneuvering is made effortless with a hydraulic bow thruster integrated with the navigation system, and a sixty five horsepower thruster with five blade propellers. Steering is hydraulic, while fuel is kept pristine through separation and filtration systems. Blackwater handling is by a sewage system rated at 200 GPD; freshwater delivery is pressurized by two pumps; domestic hot water is supplied by two heaters. Rounding out the machinery list are a chiller cleaning system, an air compressor, PTOs off both main engines, a fuel transfer system, and a tank monitoring system.

Communication, navigation & entertainment systems

Onboard communications are modern and seamless, with global broadband connectivity, satellite TV, and cellular aggregation keeping you in touch anywhere. In the pilothouse, navigation is anchored by three seventeen inch radar/plotters with speed and depth, a five inch magnetic compass, an autopilot, and a twelve inch GPS with wind and speed. Integrated systems monitors keep the ship's vitals at a glance, ten CCTV cameras watch over the

decks, and stabilizer controllers tame the sea. Additional pilothouse refinements include night vision, three airhorns, a helm stereo, fuel transfer switches, windlass controls, a new headliner with fresh upholstery, an AIS transducer, two VHF radios at the helm, multiple search and rescue controls, and emergency engine controls on the dash. Up on the flybridge helm, three nineteen inch radar/plotter/depth/speed displays, a five inch compass, an autopilot, and a VHF deliver confident command. The flybridge also features two wing controls, three captain's chairs, streaming TV and music via satellite broadband, tablet controllers, a drop down thirty inch TV in the ceiling, and dedicated flybridge air conditioning. Entertainment flows throughout the yacht with HD TVs and streaming boxes in all rooms, a comprehensive multiroom music system, and a new speaker system that fills every space with rich, clear sound.

Galley & laundry equipment

The main galley is engineered for gourmet ease, with a five burner cooktop paired to a thirty inch by twenty inch convection oven, and cold storage by two large refrigeration units, each with two freezers. Cleanup is effortless with a dishwasher, while an icemaker keeps service crisp. An oversized twenty seven inch sink anchors the generous prep space. Thoughtful refinements include a garbage disposal and new vinyl flooring. The thirty two inch by eighty seven inch center island offers four drawers and four cabinets below, with additional cabinets above, while four large windows to port and starboard flood the space with light. New headliners with LED lighting brighten the atmosphere, and an expansive one hundred ten inch L shaped dinette with a seventy three inch by forty five inch table invites relaxed gatherings. The crew galley and mess is cleverly versatile, featuring a bench for four that converts into a berth to create a third crew cabin, a thirty two inch TV, a refrigerator, a microwave, a sink, and a large freezer

measuring thirty three inches by twenty five inches by twenty one inches. Laundry is fully modernized, with a new high end washer and dryer in the lower guest companionway as the main set, and a new washer and dryer in the crew hallway to keep operations running smoothly.

Tenders & toys

Two jet skis, excluded from the sale, round out the on water fun for guests who prefer spirited play at anchor.

Deck equipment

The flybridge is a private resort in its own right, crowned by a custom hardtop with integrated lighting and a drop down forty inch TV. Comfort and control are assured by two A/C units, fiberglass nonskid decks, and three adjustable helm chairs serving a full helm with wing stations behind a Euro style plexi windscreen. Guests relax on two L shaped lounges to port and starboard with custom cushions, served by two triangular thirty inch granite top tables on stainless pedestals. A refrigerator and ample storage are built in, while the centerline island bar showcases a sixty six inch by forty four inch granite countertop with sink and a clear icemaker. Custom overhead lighting sets the mood, three stainless steel bar stools with footrests welcome company, and both a hot tub Jacuzzi with a new padded canvas cover and expansive sunpads with fresh canvas cushions beckon under a custom sunshade with carbon fiber supports. Stainless steel safety and handrails wrap the deck, with stairs forward and down to the lower deck, and a BBQ grill ready for leisurely afternoons. The aft deck is equally social, featuring a built in seating bench for four with storage and new upholstered cushions, two teak chairs with Sunbrella cushions, a sliding door to the salon framed by three floor to ceiling windows, and four side boarding gates at the aft deck and midship to port and

starboard. Teak decks set the tone, complemented by a stainless ladder to the flybridge, a pair of split aft deck mahogany tables with a four person bench, and cockpit teak flooring in a herringbone design with two custom varnished chairs and cushions. The fiberglass swim platform features nonskid and stainless safety guard rails, with teak stairs down to a teak landing and swimming platform. Custom built in storage cabinets to port and starboard accommodate service needs, supported by a glass front refrigerator, custom aft deck air conditioning, wing doors to the walkaround side decks, and a drop down ceiling TV box with a forty inch screen. Beyond the social spaces, equipment includes a low profile 2,500 lb davit, a 6000 windlass on the foredeck with three hundred feet of G4 chain, two 3500 capstans on the aft deck, two six man life rafts, eleven underwater LED lights, sea stairs, an anchor washdown system, window tinting and caulking throughout, forward bow seating with sun pad, railing, stairs and covers, and an eight step carbon fiber boarding ladder with teak steps.

Security, fire fighting & safety equipment

Situational awareness is comprehensive with a CCTV suite of ten cameras, night vision, three airhorns, and integrated navigation and lighting systems. Fire protection is centered on a fixed FM 200 suppression system, supported by twelve fire extinguishers and an integrated ship alarm system. Safety gear includes two life rafts, one life ring, one EPIRB, flares, and a first aid set.

Accommodations

The main salon presents rich cherry wood joinery in a satin finish, with elegant radius cabinetry and inlays. A custom four seat sofa pairs with an L shaped armchair and one end table between, all set on new custom carpeting. Entertainment rises on command with a fifty five inch pop up TV aft of the

bar, streaming TV via satellite broadband. The bar itself glows with illuminated onyx and marble countertops and an onyx sink, attended by three custom upholstered barrel chairs, while four dining chairs stand at the ready. New York artwork adorns the forward bulkhead above buffet cabinets with cherry wood tops and storage below. The dining area is gracefully defined from the salon by two cherry wood columns, beneath a custom mirrored soffit with LED lighting. Hunter Douglas blinds, a new Whisperwall headliner, and new custom carpeting set the tone around a seventy two inch custom round dining table with four barrel chairs, a sparkling chandelier, and half moon custom buffets with twelve doors. The forward bulkhead offers a storage cabinet with two wall sconce lights, and a portside hallway leads to the lower accommodations. A full size day head carries a custom marble countertop, a forty four inch custom mirror, a Headhunter toilet, and both AC and ventilation. The main foyer to starboard features full glass doors, a full size closet, stairs to the pilothouse, and a spacious crawl in doghouse for AV and storage. In the pilothouse, an L shaped leather settee faces a custom high gloss table on a stainless pedestal, with chart desk and drawer, a custom cherry floor inlaid with a compass rose, and steps up to the flybridge. The owner's master stateroom centers on a seventy six inch by seventy two inch king size berth beneath a decorative upholstered headboard flanked by surrounding mirrors and a custom overhead soffit with LED lighting. Two nightstands with decorative table lamps accompany dressers port and starboard, with a built in desk and chair, cedar lined closets to both sides, a fifty inch TV, and three oval twenty nine inch by twenty one inch portholes on each side. Double side doors add presence, and new carpet completes the sanctuary. The master bath is a true retreat with his and hers cherry cabinetry and marble vanity, two decorative sinks with silver fixtures, and a large walk in marble shower enclosed by fifty five inch by forty eight inch glass with custom fixtures and a marble bench seat. Mirrored medicine cabinets, an overhead mirror, new custom wallcoverings, and two heads underscore the luxury. Guest

accommodations are generous, with four guest staterooms, four guest heads, and one day head. The forward VIP offers a queen berth with custom spread and shams, storage below, a custom upholstered headboard, a cedar lined hanging locker, overhead LED lighting with a new headliner, decorative lamps to port and starboard, a forty inch TV, new carpet, and a private step down bath with onyx vanities and backsplash and a large shower with a frameless door and marble floor. The queen aft guest staterooms to port and starboard each present refined comfort: the starboard with a queen berth, the port convertible between a queen and twin singles. Each has a thirty inch TV, custom spread, shams and pillows, upholstered headboards, two built in nightstands, built in dressers, shades and blinds, and cedar lined hanging lockers. The starboard guest bath adds a shower with tub and whirlpool jets, while the port guest bath features a marble vanity top, a circular shower, and granite and onyx flooring, all with custom wallcoverings and modern toilets. The fifth guest stateroom amidships features over and under twin berths set perpendicularly, with drawer storage, a cedar lined hanging locker, shades with blinds, and a shared guest bath. The lower companionway shines with a new headliner and LED lighting, custom marble flooring, a new under counter washer and dryer, and a thoughtful storage area. Crew spaces are efficient and comfortable: the captain's stateroom to starboard offers a double berth, storage drawers, cherry wood bulkheads, a cedar lined hanging locker, and a port light; the crew cabin provides upper and lower berths and an ensuite head; and the crew lounge includes an icemaker, refrigerator, and a nineteen inch LCD TV, with an additional berth created by lowering the table electrically.

Upgrades

In May 2025, the pilothouse was refreshed with care: the teak floor was sanded and re varnished, and the cabinets and trim were sanded and

refinished to a warm luster. The two thousand twenty four to two thousand twenty three period saw an extensive refit, with the yacht completely repainted by a professional shipyard and full engine overhauls completed (port engine hours: six hundred eighteen SMO in two thousand twenty three; starboard engine hours: six hundred seventeen SMO in two thousand twenty three; total engine hours 7,258 as of Oct. 23, 2025). Throughout, new interior soft goods, upholstery, and cushions were added; LED lighting and appliances were upgraded; new teak was laid on the aft deck; walkarounds, flybridge, and bow received refreshed nonskid surfaces; and a new headliner was installed. In two thousand twenty four specifically, she was again completely repainted and received fresh bottom paint; new multi color LED lighting across the exterior; repainted storage spaces and bilges; new watermakers; a new built in water polishing system; new aft deck countertops; all new hydraulic hoses; new salon furniture; all new soft goods inside and out; a new anti barnacle treatment for A/C compressors; a new windscreen; a completely rebuilt and insulated A/C system; a new main hydraulic system pump and manifolds; all new exterior cushions and canvas covers; new pumps and valves in the Jacuzzi; a complete bridge crane rebuild; new underwater lights; a new underwater camera; a new handheld controller for engines, transmissions and thruster; eight new chart plotters; new long range and short range radars; new autopilot controllers; a new ship monitoring and camera DVR system; a new speaker system throughout; new through hulls and ball valves; a new carbon fiber boarding ladder; all new hardtop panels for the aft and side deck overhangs; many miscellaneous bilge hoses replaced; new cutlass bearings; new rudder shaft seals; new zincs; new tank senders for the monitoring system; and all smoke and carbon dioxide sensors replaced. In two thousand twenty three, upgrades continued with new LED lighting in June; both engines at three hundred eighty seven hours SMOH in February; new carpet throughout with waterproof padding at approximately \$33,000; a refinished transom area including the engine door and frame; and new

exterior cushions and covers in January. In two thousand twenty two, the decks were comprehensively renewed with complete nonskid throughout at approximately \$43,000 in December; the shore power transformer was rebuilt in December; two new one hundred AMP shore cords were added in November; the fuel tanks were completely cleaned in July; and the engines and transmissions were fully repainted in June.

CONTACTS

Shestakov Yacht Sales is a brokerage company specializing in the sale and service of yachts worldwide. The company offers services for buying and selling both new and used motor yachts, sailing vessels, and luxury superyachts. They also provide yacht registration, insurance, technical maintenance, crew selection, and charter organization services across the U.S., Canada, Latin America, the Caribbean, and the Bahamas.

The founder and lead broker of the company is Andrey Shestakov, a licensed and certified expert with extensive experience in marine engineering and shipbuilding.

The company has an extensive network of partnerships with major yacht manufacturers worldwide and provides services in multiple languages, including Russian, Ukrainian, Spanish, and English. The office is in Dania Beach, Florida, USA.

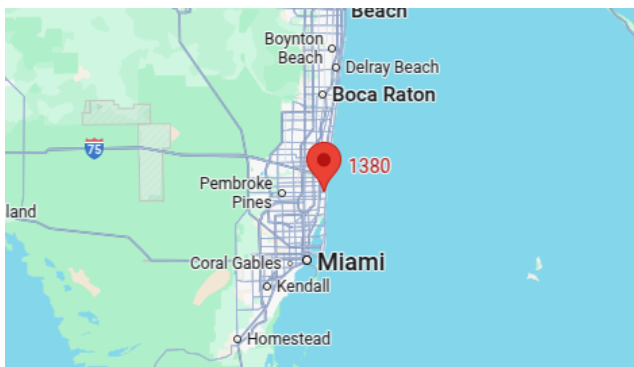
For more information and to view available yachts, you can visit the company's official website: <https://shestakovyachtsales.com>

Contact details

Phone: +1(954)274-4435

Email: andrey@shestakovyachtsales.com

Address



1380 Weeping Willow Way, Hollywood,
Florida 33019