

SUMMER FUN - ADMIRAL



Builder: [Admiral](#)

LOA: 101' 0" (30.86 m)

Year Built: 2001

Beam: 23' 0" (7.10 m)

Model: 30

Max Draft: 7' 7" (2.30 m)

Price: \$2,879,913.48 USD Subject to change.

Cruising Speed: 23 Knots (26.47 MPH)

[See full listing on our website](#)

Location: Athens, Greece

Max Speed: 29 Knots (33.37 MPH)

TABLE OF CONTENTS

OVERVIEW	3
SPECIFICATIONS	4
Basic Information	4
Dimensions	4
Speed, Capacities and Weight	4
Accommodations	5
Hull and Deck Information	5
Engine Information	5
GALLERY	6
DETAILED DESCRIPTION	15
CONTACTS	17

OVERVIEW

Summer Fun is a striking 30.80-metre luxury motor yacht launched in 2001 by Admiral Yachts and comprehensively refitted in 2023 and again in 2026. The most recent programme featured a full repaint, replacement of the superstructure glazing, and a refreshed interior scheme.

Her interiors are chic and contemporary, with a soothing, neutral palette that imparts a calm, refined ambience. She welcomes up to 12 guests in six beautifully appointed cabins, comprising a Master Suite, a Main Deck VIP that can convert into a playroom, and four twin cabins, all transformable into doubles on request, each with its own en suite.

Summer Fun also carries up to seven crew on board, delivering a relaxed, high-quality crewed charter experience. With her enduring styling and impressive leisure and entertainment amenities, including an extensive selection of water toys, she is the ideal superyacht for socialising and spending time with family and friends.

SPECIFICATIONS

Basic Information

Model Year:
2001

Country:
Greece

Year Built:
2001

Dimensions

LOA:
101' 0" (30.86 m)

Max Draft:
7' 7" (2.30 m)

Beam:
23' 0" (7.10 m)

Speed, Capacities and Weight

Cruise Speed:
23 Knots (26.47 MPH)

Water Capacity:
1083.1 Gallons

Max Speed:
29 Knots (33.37 MPH)

Fuel Capacity:
5864.62 Gallons

Gross Tonnage:
197 Pounds

Accommodations

Sleeps:

12

Hull and Deck Information

Hull Material:

Aluminum Yachts

Hull Designer:

Admiral Yachts

Deck Material:

Aluminum

Interior Designer:

Luca Dini Design

Hull Configuration:

Semi-Displacement

Engine Information

Engines:

2

Fuel Type:

Diesel

Manufacturer:

MTU

GALLERY



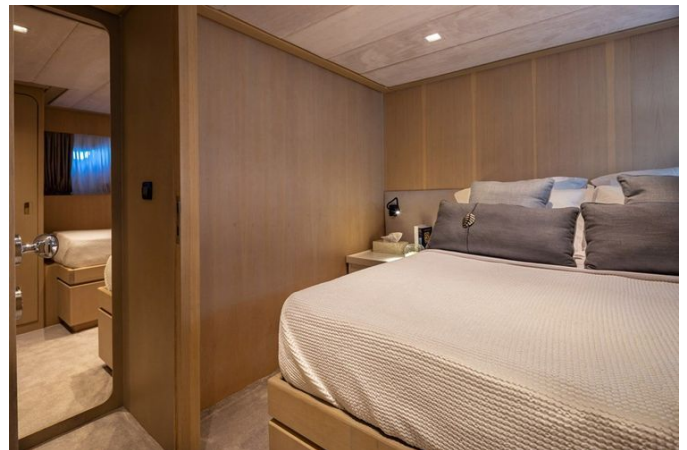
















DETAILED DESCRIPTION

Engines

Power is delivered by two MTU engines, model 12 V 396 TE94, rated at 1680 kW at 2000 RPM, driving twin screw propellers through two ZF Marine BW 4651V-Drive gearboxes with a 2.467:1 ratio, a configuration that blends authoritative thrust with refined efficiency and precise control.

Generators

Power on board is assured by two 33 kW Kohler generators, complemented by one 23 kW Kohler night generator for reliable, quiet operation at all hours, with generator consumption at 200 litres per day.

Accommodations

The yacht welcomes guests with one master suite, one VIP suite on the main deck that can be converted into a playroom, and four twin staterooms, two of which convert into a double bed. All accommodations feature ensuite facilities and are fully air conditioned for optimal comfort.

Galley

Meticulously appointed for culinary excellence, the galley features five Fridgit fridge/freezers to secure provisions for extended cruising, an Alpes-inox four-burner hob paired with an Alpes-inox AirExtractor for precise cooking and ventilation, a Miele proven and a Miele dishwasher for swift cleanup, and a Whirlpool microwave for rapid reheating. Beverage service is equally refined with a Frigomaricemaker and a portable icemaker, complemented by two

Liebherr Grand-Cru wine fridges in the salon and two Fridgit fridges (fly), while a Fridgit drinks fridge and ice maker in the pantry keeps refreshments close at hand. Practicality meets convenience with two LG washers - dryers, ensuring effortless turnarounds for guests and crew alike.

Tankage

Engineered for extended passage-making, the yacht carries an impressive 22,200 liters (5,864.62 gallons) of fuel, paired with a generous freshwater reserve of 4,100 liters (1,083.11 gallons), delivering confident range and enduring onboard comfort between refueling and replenishment.

Disclaimer

The particulars of this vessel are presented in good faith; however, no guarantee or warranty is made regarding the accuracy of the information or the condition of the yacht. Prospective buyers are encouraged to instruct their own agents or surveyors to verify any details they deem necessary. This vessel is offered subject to prior sale, price adjustment, or withdrawal from the market without notice.

Dimensions

Elegantly balanced proportions define this yacht, with an LOA of 101 feet 3 inches (30.85), a beam of 23 feet 4 inches (7.1m), and a maximum draft of 7 feet 7 inches (2.3m), all culminating in a tonnage of 169 that delivers impressive volume, stability, and comfort at sea.

CONTACTS

Shestakov Yacht Sales is a brokerage company specializing in the sale and service of yachts worldwide. The company offers services for buying and selling both new and used motor yachts, sailing vessels, and luxury superyachts. They also provide yacht registration, insurance, technical maintenance, crew selection, and charter organization services across the U.S., Canada, Latin America, the Caribbean, and the Bahamas.

The founder and lead broker of the company is Andrey Shestakov, a licensed and certified expert with extensive experience in marine engineering and shipbuilding.

The company has an extensive network of partnerships with major yacht manufacturers worldwide and provides services in multiple languages, including Russian, Ukrainian, Spanish, and English. The office is in Dania Beach, Florida, USA.

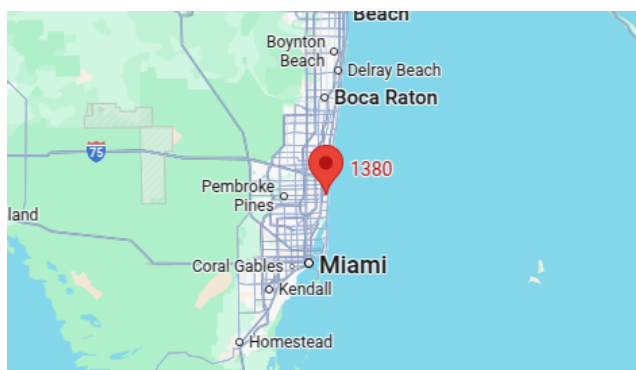
For more information and to view available yachts, you can visit the company's official website: <https://shestakovyachtsales.com>

Contact details

Phone: +1(954)274-4435

Email: andrey@shestakovyachtsales.com

Address



1380 Weeping Willow Way, Hollywood,
Florida 33019