

NUMARINE 30XP - NUMARINE



Builder: [Numarine](#)

LOA: 101' 0" (30.78 m)

Year Built: 2026

Beam: 24' 0" (7.49 m)

Model: 30XP

Max Draft: 20' 6" (6.25 m)

Price: \$13,867,272.06 USD Subject to change.

Cruising Speed: 12 Knots (13.81 MPH)

[See full listing on our website](#)

Location: Istanbul, Turkey

Max Speed: 13 Knots (14.96 MPH)

TABLE OF CONTENTS

OVERVIEW 3

SPECIFICATIONS 5

 Basic Information 5

 Dimensions 5

 Speed, Capacities and Weight 5

 Accommodations 5

 Hull and Deck Information 6

 Engine Information 6

GALLERY 7

DETAILED DESCRIPTION 22

CONTACTS 26

OVERVIEW

The brand-new 30XP represents the latest development in Numarine's celebrated XP explorer series and is the first model in the line to incorporate diesel-electric hybrid propulsion. Hull No. 5 is available for immediate handover and is currently cruising the Western Mediterranean, ready to welcome an owner who demands exceptional range, efficiency and refined onboard living.

Making a spectacular international entrance at the Cannes Yachting Festival and the Monaco Yacht Show in September 2024, the debut 30XP, MINELLA (Hull No. 1), received widespread praise; imagery showcasing MINELLA underscores the exceptionally clever use of internal volume, from the expansive aft beach club to the "balcony deck" recessed at the stern of the main deck and extending up to the upper deck, all combining to evoke the presence and comfort of a far larger superyacht.

A particularly distinctive feature is the flybridge arrangement, which creates a fluid link between the bow lounge and the traditional sundeck through a port-side passage, achieving an unbroken circulation that enhances life underway and elevates time at anchor into a relaxed, resort-like experience.

Designed to occupy the ideal space between the hugely popular 26XP and the larger steel-hulled 32XP and 37XP expedition yachts, the 30XP provides a natural step within the XP family, marrying true go-anywhere capability with superyacht-level sophistication and contemporary lifestyle amenities.

Unmistakable in its profile, this model introduces an expansive beach club equipped with fold-down terraces to port and starboard and offers an on-deck master suite with the option of a private balcony and floor-to-ceiling glazing. Outdoor living is central to the design, with a sequence of inviting retreats including the aft beach club, a raised transom platform, a sun-drenched flybridge sundeck and a gracious bow lounge, while large, sweeping windows

in the main salon, master stateroom and lower-deck guest cabins bathe the interior in natural light, keeping owners and guests continuously connected to the sea.

Already validated in the market with three units sold, the 30XP sets the tone for the next generation of contemporary explorer superyachts.

SPECIFICATIONS

Basic Information

Model Year:
2026

Country:
Turkey

Year Built:
2026

Dimensions

LOA:
101' 0" (30.78 m)

Max Draft:
20' 6" (6.25 m)

Beam:
24' 0" (7.49 m)

Speed, Capacities and Weight

Cruise Speed:
12 Knots (13.81 MPH)

Water Capacity:
660 Gallons

Max Speed:
13 Knots (14.96 MPH)

Fuel Capacity:
4887 Gallons

Accommodations

Total Heads:
6

Crew Cabin:
3

Hull and Deck Information

Hull Material:

Fiberglass and Plastic Yachts

Hull Designer:

Can Yalman

Deck Material:

GRP

Interior Designer:

N/A

Hull Configuration:

Full Displacement

Engine Information

Engines:

2

Engine Type:

Inboard

Manufacturer:

MAN

Fuel Type:

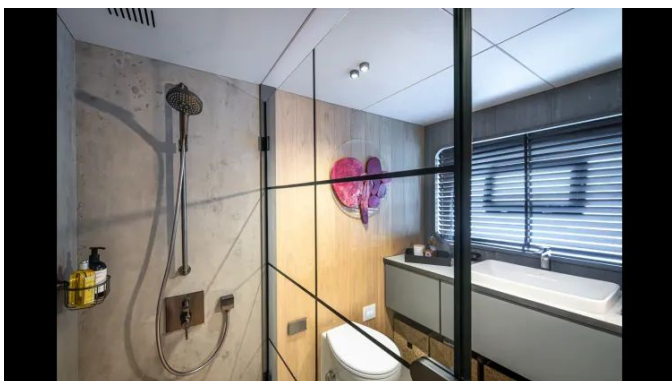
Diesel

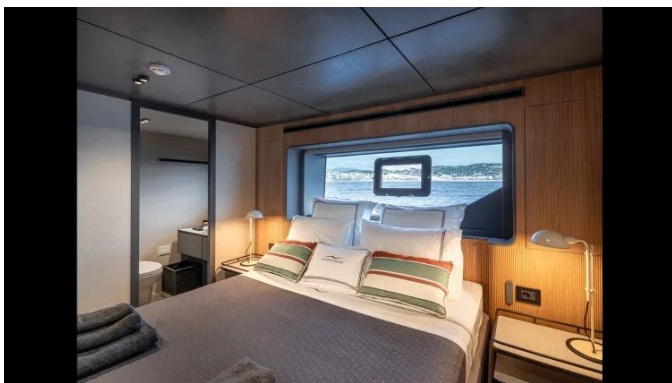
GALLERY

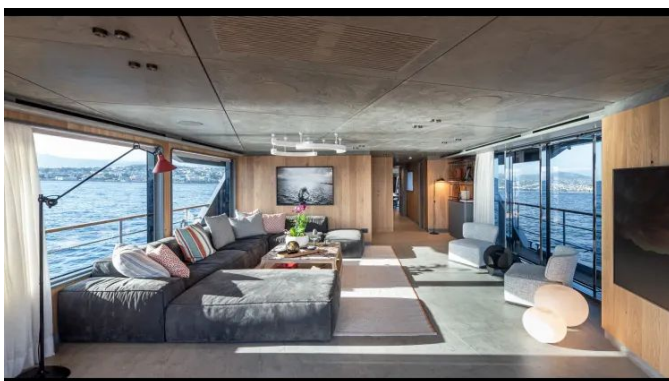




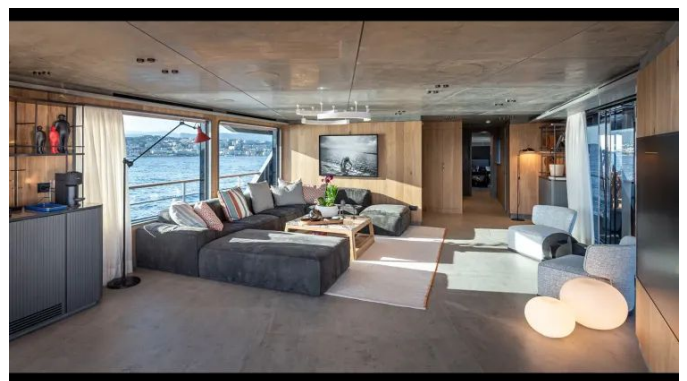




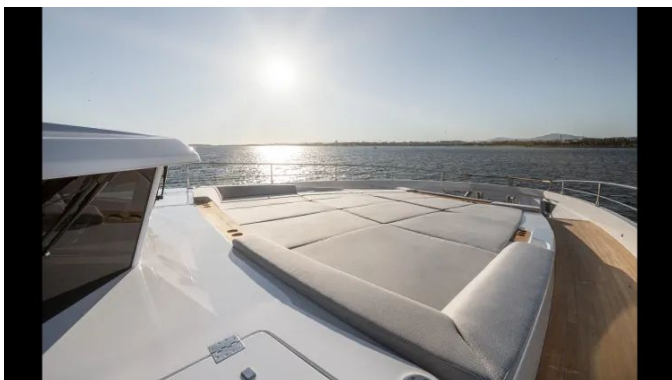




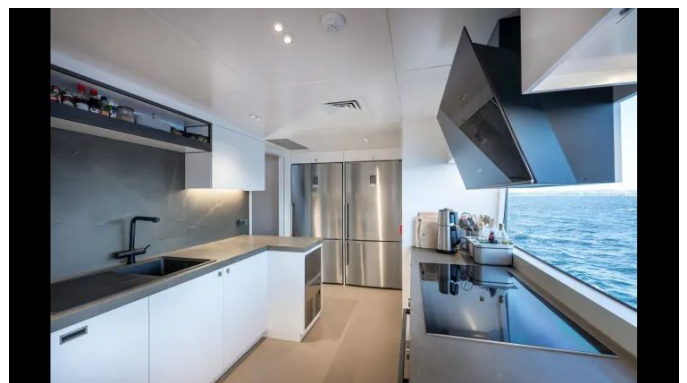
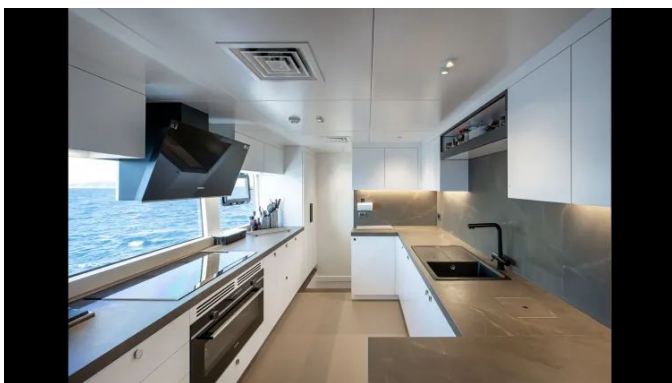


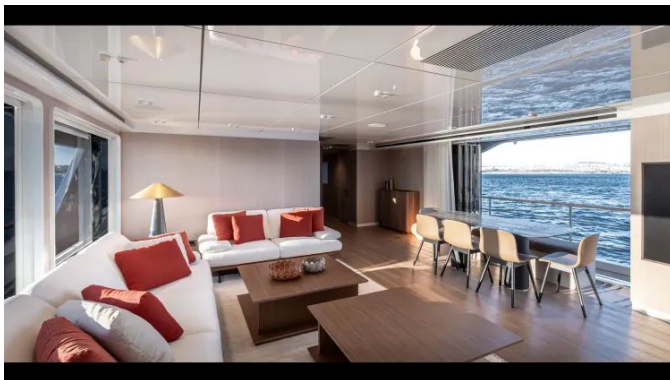


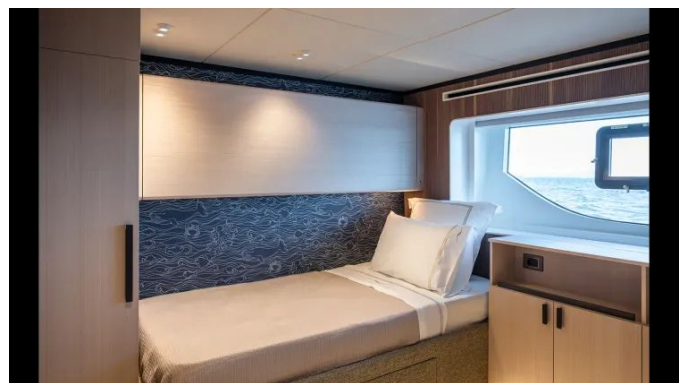
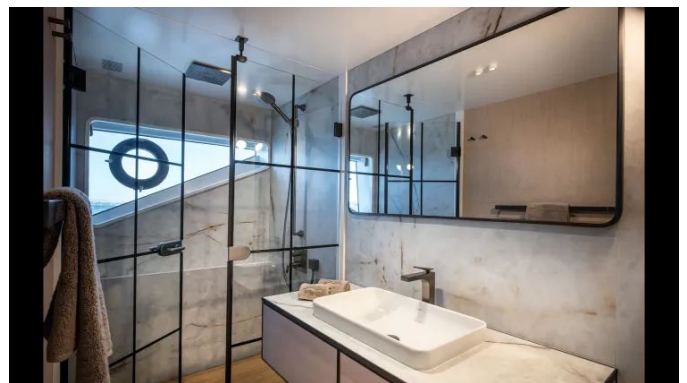
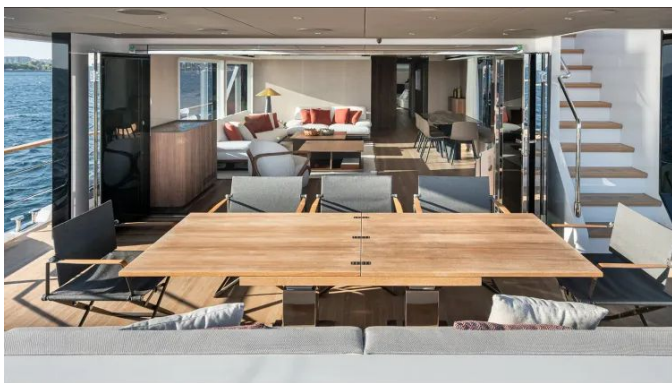














DETAILED DESCRIPTION

Numarine presents first diesel-electric model - press release

Celebrating its twentieth year, Numarine unveils a striking new addition to its explorer line: the brand's inaugural diesel-electric yacht. This model arrives as a strategic complement to the successful 26XP and 32XP, occupying an important mid-size position within the range and reflecting Numarine's ongoing commitment to sophisticated, long-range cruising. Demand for the XP series remains robust, and the 30XP has already attracted repeat buyers, with three hulls sold to existing clients prior to delivery.

Designed for refined onboard living, the 30XP accommodates ten guests across five ensuite staterooms, with four guest cabins located on the lower deck and a full-beam master on the main deck forward. The owner's suite benefits from expansive floor-to-ceiling glazing and carefully cut bulwark openings to maximize views, while an elegant private balcony brings the water even closer. The main deck salon is bathed in light through full-height windows and the yacht offers al fresco dining options both on the aft deck and on the sheltered sundeck; interior arrangements can be customized to suit each owner's preferences.

The aft semi-open beach club has been conceived with generous headroom by raising the deck above, creating a relaxed lounge area reached by three steps from the main deck. Three fold-down platforms extend usable space to a total of 43 sqm, and a side-loading tender bay is capable of housing a 6.25-metre tender. The forward lower deck contains the crew mess and sleeping quarters for five crew members, ensuring discreet and efficient service.

A raised pilothouse hull form optimizes interior volume and enhances seakeeping, while daring exterior lines by Can Yalman are balanced by

practical deck spaces, including a vast foredeck sun pad ahead of the pilothouse. Owners may choose between a diesel-electric propulsion package with Veth pod drives or a conventional propulsion setup powered by twin 560hp MAN engines. With the introduction of the 30XP, Numarine's XP family now stretches to five models, and the line-up is set to grow further with the proposed 45XP flagship, a steel-and-aluminum trideck. Producing roughly twelve yachts annually today, Numarine is preparing to increase output and will bring a new waterside facility online within the next few years.

Key features

Engineered for serene blue-water passagemaking, this yacht combines an electric fin stabilization system with two 55 kW generators equipped with automatic synchronization and a single 125A, 380V three-phase shore line, supported by comprehensive 24V DC, 380V three-phase and 230V monophase AC electrical systems complete with battery chargers. Handling is delivered with precision by an electric 41 kW bow thruster and a 21 kW stern thruster, a power-assisted hydraulic steering arrangement, and an electric twin anchor windlass operating on 16 mm chain of 140 + 190 m, complemented by twin stern capstan winches. Comfort aboard is assured through full air conditioning and heating driven by a central 240,000 BTU chiller with individually controlled fan coils for every cabin, while a twin-pump pressurized hot-and-cold water system with shore connection and a hot-and-cold swimming shower on the stern maintains convenience and luxury. Safety and oversight are paramount, with an integrated Yacht Monitoring System, eight onboard cameras displaying to monitors in the wheelhouse and crew mess, an automatic engine-room fire extinguishing installation, automatic bilge pumps tied into a central bilge system, and a remote-controlled searchlight.

Navigation and communications are state-of-the-art, featuring Raymarine electronic depth and speed readouts, autopilot, VHF, radar and three 22" XL

multifunction displays. The social areas are crafted for effortless entertaining: the flybridge wetbar is appointed with a sink, hot-and-cold water, an electric barbecue, icemaker and refrigerator, while the galley benefits from an electric refrigerator with freezer. Entertainment extends to flatscreen televisions in the VIP cabins and crew mess with SAT connection and a 60 cm satellite TV system. Exquisite teak decking covers the bathing platform and steps, side decks and foredeck, flybridge stairway, and flybridge and cockpit floors, accompanied by a cushioned sunbed on the flybridge and eight underwater lights to set an unforgettable evening scene. The beach club concept is fully realised with an owner's balcony opening to starboard, a hydraulically opening beach aft door and side wings, and a hydraulically deployed bathing and boarding ladder integrated into the beach aft door, while a garage with tender recovery system houses a 5.65 m tender. Fully fitted crew cabins ensure a professional service standard on every voyage, and the yacht's robust construction is validated by classification to RINA C + Hull Mach, Y Unrestricted Navigation.

Optional extras

Select from a curated suite of premium options designed to enhance both capability and comfort: the Super Silent Pack 140kw Li-Ion batteries furnish whisper-quiet autonomy, while an extended hardtop expands protected living space; freshwater production can be tailored with a Water Maker Single Capacity (330 lt/hr) or the Water Maker Double Capacity (660 lt/hr); propulsion may be upgraded to the MAN D2676 LE 438 560 bhp @2100 rpm - IMO TIII (SCR) for assured performance; a wine cooler in the saloon adds a touch of refinement; a wing station delivers precise maneuvering; and a yacht controller provides effortless command from multiple positions aboard.

US package & pricing

To ensure consistency across global markets, Numarine now publishes all pricing in euros. For clients in the United States, a dedicated US Package can be specified for each model for an additional fee; this upgrade supplements the Numarine base specification with enhancements such as IMO Tier III engine packages, shore power and frequency converters, US power packages, US appliances and a makers list, and the option of extended hard tops, among other refinements. Pricing for the US Package is provided together with a comprehensive list of available options.

Disclaimer

The particulars shown for this yacht are supplied in good faith but cannot be guaranteed and do not constitute a warranty as to the vessel's condition. She is offered subject to prior sale, changes in price, or withdrawal from the market without notice. This information is provided as a courtesy by the broker to clients and is not intended to be, nor should it be relied upon as, a formal representation of any specific yacht for sale.

CONTACTS

Shestakov Yacht Sales is a brokerage company specializing in the sale and service of yachts worldwide. The company offers services for buying and selling both new and used motor yachts, sailing vessels, and luxury superyachts. They also provide yacht registration, insurance, technical maintenance, crew selection, and charter organization services across the U.S., Canada, Latin America, the Caribbean, and the Bahamas.

The founder and lead broker of the company is Andrey Shestakov, a licensed and certified expert with extensive experience in marine engineering and shipbuilding.

The company has an extensive network of partnerships with major yacht manufacturers worldwide and provides services in multiple languages, including Russian, Ukrainian, Spanish, and English. The office is in Dania Beach, Florida, USA.

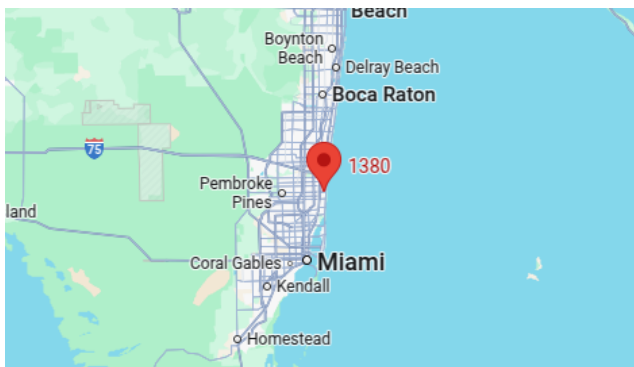
For more information and to view available yachts, you can visit the company's official website: <https://shestakovyachtsales.com>

Contact details

Phone: +1(954)274-4435

Email: andrey@shestakovyachtsales.com

Address



1380 Weeping Willow Way, Hollywood,
Florida 33019