

MOVIE SET - KNIGHT & CARVER



Builder: [KNIGHT & CARVER](#)

LOA: 101' 0" (30.78 m)

Year Built: 1983

Beam: 28' 0" (8.53 m)

Model: Custom Trideck

Max Draft: 23' 0" (7 m)

Price: \$349,999 USD Subject to change.

Cruising Speed: 9 Knots (10.36 MPH)

[See full listing on our website](#)

Location: Fort Lauderdale, United States

Max Speed: 12 Knots (13.81 MPH)

TABLE OF CONTENTS

OVERVIEW 3

SPECIFICATIONS 4

 Basic Information 4

 Dimensions 4

 Speed, Capacities and Weight 4

 Accommodations 4

 Hull and Deck Information 5

 Engine Information 5

GALLERY 6

DETAILED DESCRIPTION 19

CONTACTS 27

OVERVIEW

The most interior square footage per dollar in South Florida—an exceptional find. 101 1983 Knight Carver custom tri-deck “Movie Set” showcases a spacious luxury motor yacht with superyacht stature, offering 5 staterooms and 6 heads plus separate crew quarters. Casual elegance and unrivaled volume stretch across 3 expansive decks, perfect for family liveaboard comfort, holidays, and entertaining. An ultra-wide 28 foot beam, full walkaround decks, and generous living areas deliver outstanding ease, space, and practicality. Accommodations include five en suite cabins, 3 refrigerators, two chest freezers, and abundant storage. Powered by twin Caterpillar 3412 mains, three generators, and two water makers, combined with large fuel tanks and NEW electronics, she is prepared for short hops and true long range cruising. The flybridge features a bar with wine cooler and fridge; the gourmet galley carries all new, top of the line Samsung equipment including a smooth top range with microwave/convection above, a dishwasher, and a Sub Zero refrigerator/freezer. In the salon, a large Samsung curved screen TV pairs with exhilarating 5.1 surround sound. A NEW washer and dryer join a notable suite of upgrades: a USCG certified MSD waste treatment system that eliminates pump outs; a 600 gallon freshwater reservoir with two water heaters; five wine coolers and two dedicated ice makers for effortless hosting; and NEW STARLINK connectivity delivering fast internet throughout the boat. Act fast—the owner is relocating to Hawaii and has directed us to sell it now.

SPECIFICATIONS

Basic Information

Model Year:
1983

Country:
United States

Year Built:
1983

Dimensions

LOA:
101' 0" (30.78 m)

Max Draft:
23' 0" (7 m)

Beam:
28' 0" (8.53 m)

Speed, Capacities and Weight

Cruise Speed:
9 Knots (10.36 MPH)

Water Capacity:
800 Gallons

Max Speed:
12 Knots (13.81 MPH)

Fuel Capacity:
5400 Gallons

Accommodations

Total Heads:
6

Crew Cabin:
2

Hull and Deck Information

Hull Material:

Fiberglass and Plastic Yachts

Hull Designer:

N/A

Deck Material:

Composite

Interior Designer:

N/A

Hull Configuration:

N/A

Engine Information

Engines:

2

Engine Type:

Inboard

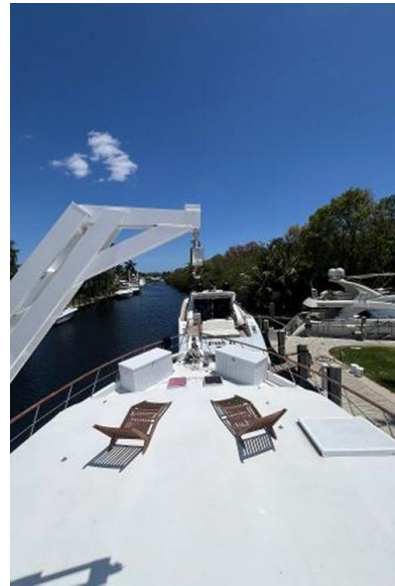
Manufacturer:

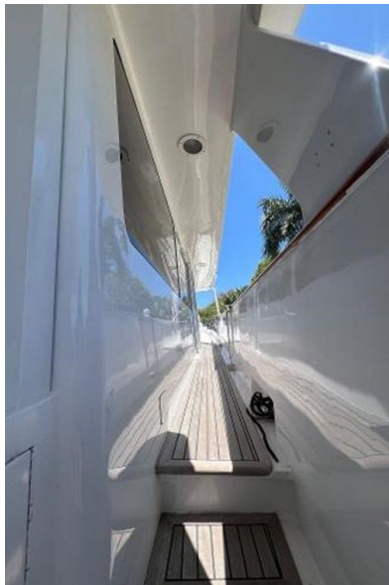
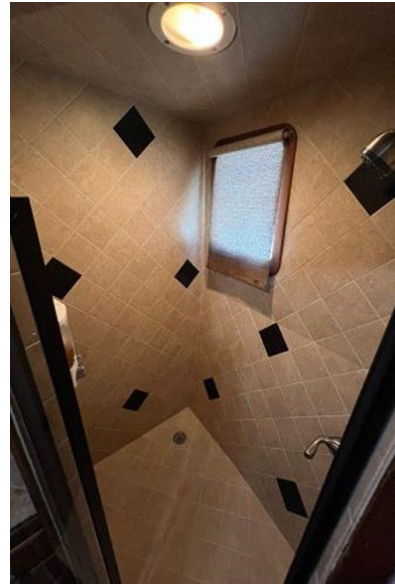
Caterpillar

Fuel Type:

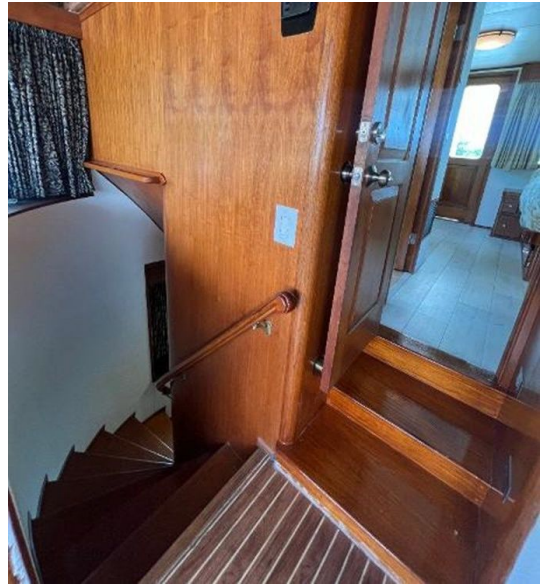
Diesel

GALLERY



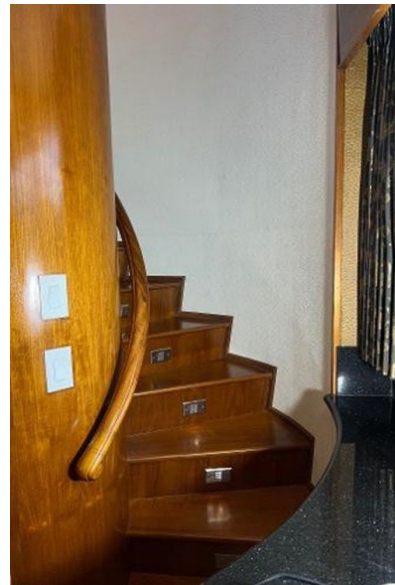
























DETAILED DESCRIPTION

Main galley

Flooded with natural light from a huge picture window, the main galley is appointed with granite countertops and a new ceiling replaced in 2021. A suite of stainless steel appliances includes a Sub-Zero side-by-side refrigerator/freezer, a Frigidaire four-burner stove with oven, a Whirlpool dishwasher, a Kenmore ELITE trash compactor, a Kenmore ELITE microwave, and a KitchenAid ice maker, complemented by a commercial ice cream maker. Practicality meets refinement with two sinks and two exhaust fans, the latter replaced with new units in 2021, while a dedicated coffee bar and five wine coolers ensure effortless entertaining.

Main salon

The main salon invites with a Restoration Hardware wooden dining table paired with ten dining chairs, framed by expansive picture windows that flood the space with natural light and scenic vistas. High-end built-in surround-sound speakers valued at \$15,000 elevate every gathering, while built-in custom cabinets provide tailored storage and a refined, architectural presence. In 2021, the salon was comprehensively refreshed with new LED lighting, updated flooring, a renewed ceiling, new wall coverings, a plush sectional sofa, coordinated coffee and end tables, and upgraded hardware on all drawers, doors, cabinets, and closets, creating a cohesive, contemporary ambiance. A thoughtfully positioned galley bar completes the setting, ideal for cocktails and engaging cooking demonstrations.

Owner's stateroom

Commanding its own private deck and entrance, the owner's stateroom is a sanctuary of light and space, framed by giant picture windows throughout and centered on a walkaround king bed. Thoughtful comforts include individual air-conditioning replaced with new in 2021, a 24" TV and Blu-Ray player, and abundant storage with ample drawers and closet space. Rich granite countertops complement two vanities and built-in desks, while the flooring was replaced with new in 2021 to underscore the refreshed ambiance. Attention to detail extends to the hardware on all drawers, doors, cabinets, and closets, replaced with new in 2021, and to the en-suite bathroom, which features a large shower along with fixtures and an exhaust fan in the head replaced with new in 2021.

Middle deck/ private owner's deck

A spacious, private deck dedicated to the owner's stateroom, this refined retreat offers ample room for a jacuzzi and a full dining table. The deck is partially covered to provide generous areas for both shade and sun, while the expansive open space easily converts into a vibrant dance floor for lively entertaining. A covered L-settee sofa with a coffee table creates an inviting lounge, and a large, comfortable stairwell leads gracefully to the top deck for effortless circulation. Practicality is equally considered with a large storage locker designed for toys, equipment, or essential supplies.

Accommodations

This yacht welcomes you with five ensuite staterooms, headlined by a generous owner's suite on the second level with a king bed. The remaining accommodations are thoughtfully arranged on the first level, including one

king stateroom, one queen stateroom, and two staterooms each appointed with a full bed complemented by an additional twin bunk, creating flexible sleeping options for family and guests. A convenient day head further enhances everyday comfort.

Dedicated crew quarters are set apart for privacy and efficiency, offering abundant storage, a private captain's berth with a full bed and two additional twin bunks, a well-equipped kitchenette with a cozy dining booth, and a large shower for added ease at sea.

Forward

On the foredeck, two Maxwell 24V windlasses stand ready, complemented by generous deck space that accommodates a tender, two jet skis, and additional watercraft and toys. A vast storage compartment is dedicated to fenders and watersports equipment. Ground tackle includes one main anchor with chain and one secondary anchor with chain. Forward crew quarters feature high ceilings with sleeping for up to six, a full granite galley, a dining table, and a bathroom with a large shower, all finished in the same style and with the same fittings as the guest accommodations.

Flybridge station

Command from the flybridge is intuitive and assured, anchored by a Yacht Controller steering system with wireless remote control, replaced with new in 2021, and complemented by B&G depth and speed, a Simrad Autopilot, ICOM VHF radios, and a Ritchie compass. Navigation intelligence is presented with clarity as the radars and chart plotters repeat to two Viewsonic C 6730 color monitors, while a Veratron dual digital engine surveillance system for heat, RPM, and pressures—also replaced with new in 2021—keeps critical performance data continuously in view.

Electronics and helm

At the helm, a Yacht Controller steering system with wireless remote control, replaced with new in 2021, pairs with a Garmin GPSMAP 743 chartplotter and OceanLink seven-inch dual engine displays to deliver effortless command and clear readouts. Communications and positioning are assured by VHF antennas, ICOM VHF radios, and a GPS antenna, while the navigation suite features a Furuno GP-170 GPS navigator, a Wagner steering compass, B&G depth and speed, and a Simrad autopilot for confident passage-making. The fishfinding and monitoring package includes a Furuno FCV295 color fish finder, engine room cameras integrated with a ViewSonic interior monitoring system, and two ViewSonic color monitors for crisp visuals. Network reliability comes courtesy of a Pepwave Wi-Fi router with multiple access points, replaced with new in 2021, and safety is enhanced by a Jotron SART. Behind the scenes, a Furuno main power supply board and Furuno filter board assembly ensure stable performance, while a Veratron dual digital engine surveillance system for heat, RPM, and pressures—replaced with new in 2021—keeps vital metrics front and center.

Top deck with additional galley

A vast, uncovered deck invites dining and entertaining under the stars, sunbathing, or yoga, and is capable of hosting and serving up to forty guests, with multiple seating configurations that allow everyone to dine together as one large group or relax separately in smaller parties or couples. The dual-purpose flybridge serves as both helm and social hub, featuring a built-in, full-service galley appointed with a Teppanyaki grill, seven propane burners, two sinks, a refrigerator/freezer, a wine cooler, a microwave/convection oven, a dedicated plating and food-preparation surface, and color-changing LED lighting. A sushi bar seats four guests with a front-row view of the chef for

engaging cooking demonstrations, while a dedicated “Fitness” pole anchors a generous performance and exercise space. For anglers, sixty-foot fishing outriggers stand ready to extend your reach.

Lower aft deck

The lower aft deck presents a covered, Colonial-style dining area for up to twelve guests, complemented by a covered diving and fishing platform outfitted with twin fighting chairs and a custom tackle center. An outdoor ice maker ensures refreshment on demand, while a large, comfortably designed stairwell leads gracefully to the middle deck. Thoughtful exterior storage, including a dedicated closet for toys, equipment, or supplies, keeps the space uncluttered and adventure-ready.

Guest staterooms (four)

Four additional guest staterooms provide versatile accommodations, comprising one California king, one walkaround queen, and two queen staterooms each with a single bunk above. Every stateroom is enhanced by large picture windows and a large en-suite bathroom with a generous shower, supported by air-conditioning throughout. All heads are fitted with exhaust fans that were replaced with new units in 2021.

Additional accommodations

The bridge/pilot house transforms into a full-beam Captain’s Quarters and office, thoughtfully appointed with a full bath and a California King Murphy bed for effortless day-to-night versatility. Separate crew quarters are smartly positioned in the bow and feature a dedicated galley and a comfortable dining area for four to six crew, ensuring smooth operations on extended passages.

Crew accommodations comprise two cabins and two heads, arranged to provide two single berths and three double berths, delivering a practical yet inviting environment for professional crew.

Electrical

The yacht's electrical backbone is engineered for quiet reliability, beginning with three Norpro 45 kW generators housed in sound shields. AC power is delivered through two 100-amp, 240-volt lines routed through power transformers, complemented by an Acme 240-volt primary transformer for stable, clean current. Overload protection is managed by breakers at the main load panel, while distribution is organized through a breaker-equipped load panel serving the air-conditioning system, the pump system, and all house systems. Safety and redundancy extend below the waterline with ten bilge pumps on float switches—one rated at 24 volts and nine at 12 volts—and an engine-driven bilge pump system fitted with a ball valve and pickup using approved hose and clamps.

Disclaimer

All particulars of this vessel are presented in good faith; however, neither the accuracy of the information nor the condition of the vessel is guaranteed or warranted. Buyers should instruct their agents or surveyors to investigate and verify any details they wish to have validated. This vessel is offered subject to prior sale, price change, or withdrawal without notice.

Engine details and mechanical equipment

Power is delivered by twin inboard Caterpillar 3412 diesel engines, managed through Yacht Controller electric engine controls that were replaced with new

in 2021. Steering assurance comes from two engine-driven steering pumps, while climate control is provided by two 30,000 BTU 220v AC systems, one 24,000 BTU 220v AC system, one 15,000 BTU 220v AC system installed in 2020, and four 10,000 BTU 220v AC systems, including one unit from 2020. The yacht is equipped with seven freshwater 24v Headhunter marine heads and a Coast Guard approved Ahead Sanitation Systems MSD system, supported by seven battery chargers rated between 20 and 30 amps. Domestic comfort is further enhanced by two GE 40-gallon water heaters replaced with new in 2020, three Headhunter fresh water pumps, two 220v circulation pumps for the AC system, and one 110v oil-change pump. For adventures on the water, there is an Eskimo 240v crushed-ice system for freshly caught fish and a dive compressor, while reliability underway is reinforced by commercial drip-less shaft seals and Michigan four-blade bronze 42-inch by 36-inch propellers complemented by two spare propellers. Extended autonomy is assured by two S&K 50 gph watermakers and an air-horn compressor, and maneuverability benefits from a bow thruster replaced in 2023 at a cost of \$10,000. Laundry needs are met by LG clothes washer and dryer units replaced with new in 2021, alongside Miele clothes washer and dryer units also replaced with new in 2021, and the vessel is completed by a comprehensive black water system.

Safety equipment

Prepared for offshore confidence, the yacht carries two Revere USCG-approved ten-person life rafts, replaced with new in 2021, complemented by twenty life jackets to outfit all guests and crew. Night operations are supported by one remote-control 24V searchlight, while Sea Vision underwater lights enhance visibility beneath the surface. Fire protection is comprehensive, with six dry chemical extinguishers supplemented by twenty-two fire extinguishers, and fixed air signal horns provide unmistakable acoustic signaling. Emergency response equipment includes one flare gun kit,

two toss rings for rapid recovery, and one submersible bilge pump for dependable dewatering.

CONTACTS

Shestakov Yacht Sales is a brokerage company specializing in the sale and service of yachts worldwide. The company offers services for buying and selling both new and used motor yachts, sailing vessels, and luxury superyachts. They also provide yacht registration, insurance, technical maintenance, crew selection, and charter organization services across the U.S., Canada, Latin America, the Caribbean, and the Bahamas.

The founder and lead broker of the company is Andrey Shestakov, a licensed and certified expert with extensive experience in marine engineering and shipbuilding.

The company has an extensive network of partnerships with major yacht manufacturers worldwide and provides services in multiple languages, including Russian, Ukrainian, Spanish, and English. The office is in Dania Beach, Florida, USA.

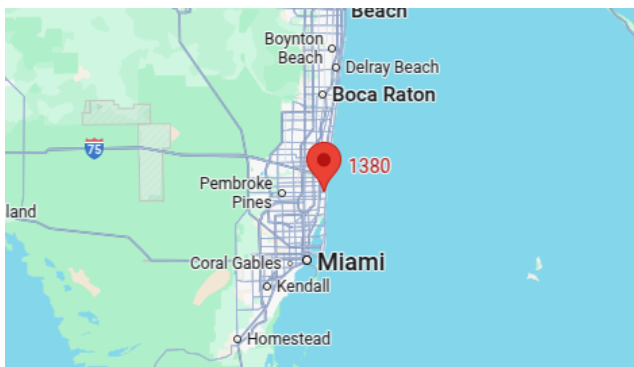
For more information and to view available yachts, you can visit the company's official website: <https://shestakovyachtsales.com>

Contact details

Phone: +1(954)274-4435

Email: andrey@shestakovyachtsales.com

Address



1380 Weeping Willow Way, Hollywood,
Florida 33019