

JOURNEY - SANLORENZO



Builder: [Sanlorenzo](#)

LOA: 102' 0" (31.10 m)

Year Built: 2019

Beam: 23' 0" (7.06 m)

Model: SL102 Asymmetric

Min Draft: 8' 10" (2.70 m)

Price: \$8,645,020.51 USD Subject to change.

Max Draft: 8' 10" (2.70 m)

[See full listing on our website](#)

Location: Tivat, Montenegro

Cruising Speed: 20 Knots (23.02 MPH)

Max Speed: 28 Knots (32.22 MPH)

TABLE OF CONTENTS

OVERVIEW	3
SPECIFICATIONS	5
Basic Information	5
Dimensions	5
Speed, Capacities and Weight	6
Accommodations	6
Hull and Deck Information	6
Engine Information	7
GALLERY	8
DETAILED DESCRIPTION	17
CONTACTS	20

OVERVIEW

Delivered in 2019 and berthed in Montenegro, this 102-foot luxury motor yacht blends Italian refinement with spirited performance. Built in GRP/fiberglass, her sculpted lines and taut profile promise structural resilience, efficient seakeeping and hushed motion through the water. The interior, conceived by Zuccon International Project, unfolds with understated modernity—clean silhouettes, thoughtfully layered materials and a calming palette that together create a composed, inviting atmosphere.

Light-filled communal spaces flow effortlessly from a gracious main salon to expansive alfresco areas designed for leisurely days at anchor and unforgettable evenings beneath the stars. Multiple decks provide generous space for sunbathing and al fresco dining, while a broad 23-foot beam yields impressive interior volume and a sense of true onboard comfort.

Accommodation is arranged to host up to 10 guests, supported by a professional crew of 6 who deliver attentive service and preserved privacy throughout every voyage.

Propulsion comes from twin MTU diesel inboards, offering lively acceleration and a top speed of 28 knots, with a relaxed cruise at 20 knots that makes island-hopping and coastal exploration both rapid and refined. Substantial tankage—approximately 3,200 gallons of fuel and around 500 gallons of fresh water—supports extended passages with confidence, and a well-judged draft affords access to elegant marinas as well as sheltered bays.

Designed for owners who prize pedigree in styling and assured sea-keeping, she is equally suited to hosting on a sun-swept Adriatic terrace or racing toward the next Riviera rendezvous. From dawn swims and long lunches to candlelit soirées and moonlit crossings, every element is composed to celebrate a life at sea. Available for inspection in Montenegro, this 30 metre class yacht marries allure, performance and poise.

Motor Yacht · Superyacht · Flybridge Style · Planing Performance · Luxury Yacht
· Mediterranean Cruiser · Charter-Ready

SPECIFICATIONS

Basic Information

Category:
Motor yachts

Year Built:
2019

Sub category:
Motor Yacht

Country:
Montenegro

Model Year:
2019

Dimensions

LOA:
102' 0" (31.10 m)

Beam:
23' 0" (7.06 m)

Min Draft:
8' 10" (2.70 m)

Max Draft:
8' 10" (2.70 m)

Speed, Capacities and Weight

Cruise Speed:

20 Knots (23.02 MPH)

Water Capacity:

501.93 Gallons

Max Speed:

28 Knots (32.22 MPH)

Fuel Capacity:

3196.48 Gallons

Gross Tonnage:

180 Pounds

Accommodations

Sleeps:

10

Crew Berths:

6

Hull and Deck Information

Hull Material:

Fiberglass and Plastic Yachts

Hull Designer:

N/A

Deck Material:

GRP

Interior Designer:

Zuccon International Project

Hull Configuration:

N/A

Engine Information

Engines:

2

Engine Type:

Inboard

Manufacturer:

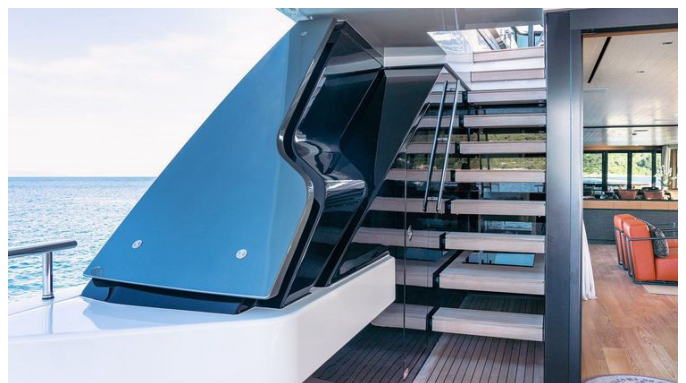
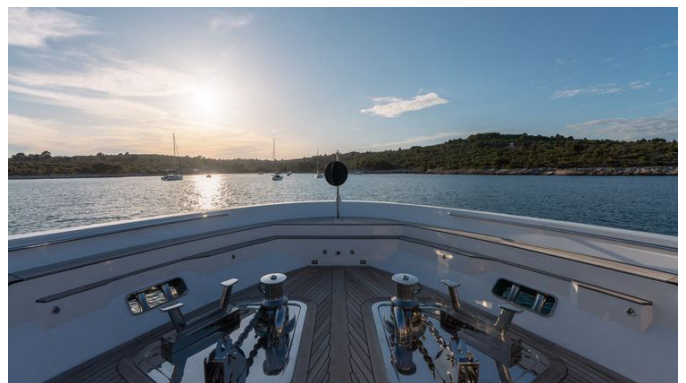
MTU

Fuel Type:

Diesel

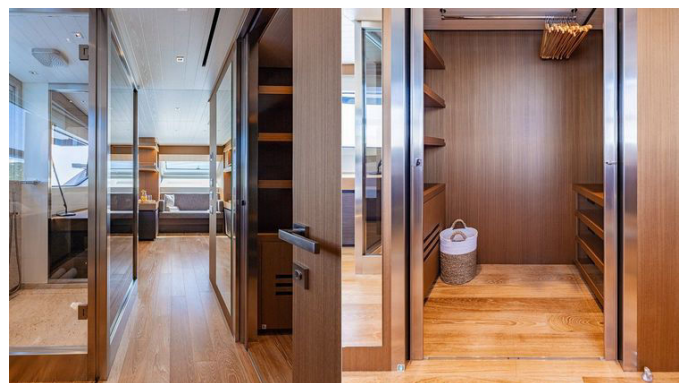
GALLERY



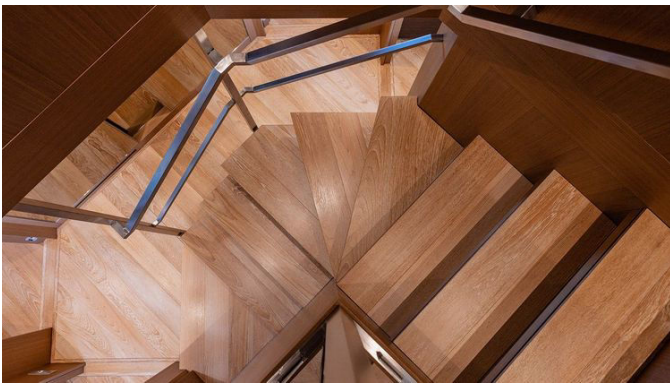
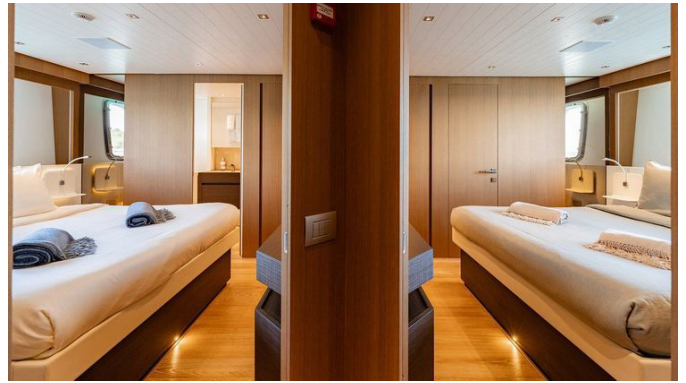


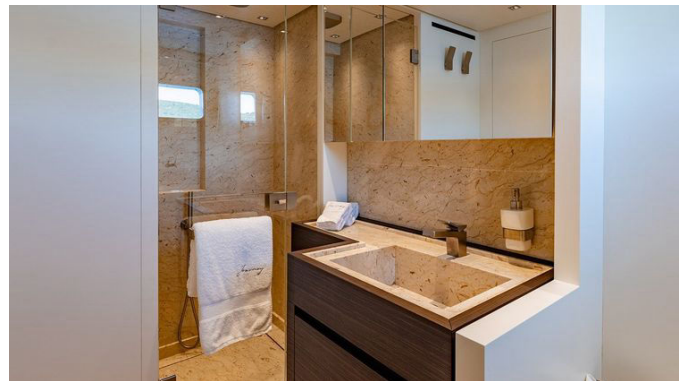














DETAILED DESCRIPTION

Specifications

JOURNEY is a distinguished Sanlorenzo motor yacht measuring 31.08 m overall with a beam of 7.06 m and a maximum draft of 3.17 m, presenting 180 GT and delivered in 2019 to RINA classification RINA - 98021. Carrying the Maltese flag and offered in VAT Paid status, hull number 710 lies in Tivat, Montenegro, and reveals a GRP hull and superstructure conceived by Zuccon International Project, who executed naval architecture as well as exterior and interior design; the hull type is not specified and no refit year is recorded. Propelled by diesel power, JOURNEY reaches a maximum speed of 27 knots and a comfortable cruising speed of 20 knots while accommodating ten guests in five cabins with a dedicated crew of six to ensure refined service. Performance is generated by two MTU 16V 2000 M96 engines rated at 2,434 HP each, with engine hours logged on the fourth of February 2026 at 2,606 hours for both port and starboard units, and at an economical speed the yacht delivers a range of 1,050 nautical miles at 11 knots while consuming approximately two times 300 L/h at cruising speed. Propulsion is through V drive gearboxes specified as 2 × ZF BW 3060V with a 3:1 ratio, driving Aquamet 17 shafts turning left hand and right hand Nibral S class propellers, with steering provided by AISI 316 stainless steel rudders. Electrical generation is secured by two Kohler 45 EFO7 DJ gensets showing hours as of the fourth of February 2026 of 6,164 hours on port and 6,194 hours on starboard, while shore power is managed through a 63 A, four pole cable with automatic winding rated 45 kVA three phase and supported by a Glendinning Cablemaster CM8 for 100/125 A shore power. The DC architecture is comprehensive, featuring seven Mastervolt MASS 24/25 battery chargers, an extensive service battery pack, dedicated 24 V DC start batteries for main engines and generator, an MTU

electronic 24 V DC battery pack, 24 V DC emergency batteries, backup batteries for radio equipment and an AutoPrime safety battery pack, with a Mastervolt inverter 24 V / 5000 W supplying the 220 V sockets. Tankage is generous for long autonomy with 12,100 l of fuel, 1,900 l of fresh water, 850 l of grey water and 900 l of blackwater, and hotel water needs are supported by two Idromar International watermakers showing 5,536 hours on Unit One and 588 hours on Unit Two as of the fourth of February 2026. Auxiliary and hotel systems include a hydraulic stern thruster, an active carbon purification filter, a tender fuel filling system with a manual pump in the garage and an engine room workbench; domestic systems comprise a Gianneschi water pressure system (230/400 V plus 24 V), two Gianneschi 100 l water boilers, an installed wash down system and comprehensive ventilation in the engine room, galley and sanitary areas, with climate control by Condaria PCWM / VAR 45003 and fuel transfer handled by Gianneschi CP 30 AJ pumps (230/400 V + 24 V). Blackwater treatment is by a Selmar Blue Sea 3500 Plus plant and the WC system uses Dometic electric toilets. Control is concentrated at the wheelhouse and flybridge with the addition of a Yacht Controller for precise low speed maneuvering. Safety and security are elevated by a Raymarine CCTV suite with three cameras in the cockpit, three in the engine room and three covering the bow, all monitored via a touchscreen in the crew mess and a 16 inch monitoring/navigation screen in the Owner's cabin, complemented by mandatory safety inventory including EPIRB, life rafts, fire extinguishers, a fixed FM system 2000, smoke and heat alarms, bilge alarm and a carbon monoxide gas detector. Connectivity and communications are comprehensive, featuring a SEATEL TV80 satellite TV antenna with a second SEATEL TV80 empty radome, a 4G Internet Wi-Fi system with a harbour hotspot antenna, satellite communications via Starlink with onboard Starlink Wi-Fi, a Pepwave cellular phone system and telephone systems by Seatel and Copham, while radio suites include Furuno FM 8900 S VHF systems and an Icom HSR handheld VHF. Navigation electronics comprise a VM100 radar with Doppler, a CP 370

echosounder, Furuno SR 702 GPS, a Raymarine HybridTouch plotter pack, AIS transponder, Raymarine wind instruments and speed/log, a White Star Riviera – Genova gyrocompass, Sailor 6004 Navtex and the BWA S – HBU 1000. On deck the yacht features a starboard side balcony with a lateral door opening from the main deck salon, an external stainless steel shower column, teak decking on the flybridge, a cockpit summer cover, a stainless steel yacht nameplate, aft cleats and capstans flush mounted in teak and a removable stainless steel hardtop stair with teak steps, while ground tackle is provided by Italwinch with anchor winch and aft deck capstans and chains of two times 150 m and boarding is via a Besenzoni gangway. Entertainment is delivered by an integrated AV ecosystem with televisions throughout including an 83 inch screen in the salon, a 65 inch screen in the master cabin, 40 inch televisions across VIP, guest and crew areas with additional 32 inch guest TVs and a Samsung 40 inch TV on the flybridge with electric lift, outdoor sound and TV SAT complemented by Wi Fi, Starlink, 4/5G Internet and Bluetooth speaker and sound system pairing. The galley and domestic inventory comprises a thirty four bottle wine cooler, a Teppan Yaki, a Gaggenau cooking top and 90 cm oven, Beko deep freezer and refrigeration and Miele laundry appliances including washing machine and dryer. Watersports are completed by a Williams 445 Diesel Jet tender. Accommodation is arranged over five cabins for ten guests with a master suite sized 180 × 210, two VIP cabins sized 170 × 190 and two twin cabins 100 × 190 convertible to doubles of 200 × 190, supported by crew quarters for six to ensure discreet professional service throughout.

CONTACTS

Shestakov Yacht Sales is a brokerage company specializing in the sale and service of yachts worldwide. The company offers services for buying and selling both new and used motor yachts, sailing vessels, and luxury superyachts. They also provide yacht registration, insurance, technical maintenance, crew selection, and charter organization services across the U.S., Canada, Latin America, the Caribbean, and the Bahamas.

The founder and lead broker of the company is Andrey Shestakov, a licensed and certified expert with extensive experience in marine engineering and shipbuilding.

The company has an extensive network of partnerships with major yacht manufacturers worldwide and provides services in multiple languages, including Russian, Ukrainian, Spanish, and English. The office is in Dania Beach, Florida, USA.

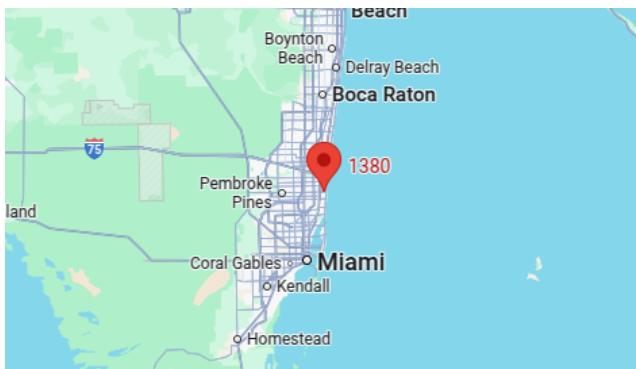
For more information and to view available yachts, you can visit the company's official website: <https://shestakovyachtsales.com>

Contact details

Phone: +1(954)274-4435

Email: andrey@shestakovyachtsales.com

Address



1380 Weeping Willow Way, Hollywood,
Florida 33019