



REPOSADO - WESTPORT - CRESCENT



Builder:

[WESTPORT - CRESCENT](#)

Year Built:

2000

Model:

Raised Pilot House

Price:

[See on website](#)

Location:

Vancouver, Canada

Max Speed:

23 Knots (26.47 MPH)

LOA:

104' 0" (31.83 mm)

Beam:

24' 0" (7.37 mm)

Min Draft:

21' 1" (6.4166 mm)

Max Draft:

21' 1" (6.4166 mm)

Cruising Speed:

14 Knots (16.11 MPH)

If you would like to buy a yacht **REPOSADO - WESTPORT - CRESCENT** or would like help answering any questions concerning purchasing, selling, or chartering a yacht, please call **+1(954)274-4435** or click here on <https://shestakovyachtsales.com>

TABLE OF CONTENTS

Overview 3

Specifications 4

 Basic Information 4

 Dimensions 4

 Speed, Capacities and Weight 4

 Accommodations 5

 Hull and Deck Information 5

Gallery 6

Contacts 14

OVERVIEW

REPOSADO is a remarkable raised pilothouse motoryacht, showcasing exceptional seakeeping performance, effortless upkeep, and meticulously designed systems. Crafted from fiberglass, she significantly reduces long-term maintenance concerns. Her adaptable layout features a generous country kitchen and four guest staterooms, making her a favorite among both owners and crew.

KEY FEATURES:

Expansive full-width master stateroom with an ensuite bathroom

Spacious "Country Kitchen" galley with a cozy dining area

Well-appointed Flybridge equipped with a Jacuzzi, wet bar, refrigerator, ice maker, barbecue, and ample dining space

Recently applied bottom paint for enhanced hull maintenance

Newly installed Bimini top for added shade and comfort

U.S. duty paid

This exquisite yacht is currently available for sale, making it an ideal opportunity for those looking to buy a yacht in the current boat location.

Explore yacht sales in the current boat location and discover the luxury and elegance that REPOSADO has to offer.

SPECIFICATIONS

Basic Information

Category:
Motor yachts

Sub category:

Model Year:
2000

Year Built:
2000

Country:
Canada

Dimensions

LOA:
104' 0" (31.83 mm)

Min Draft:
21' 1" (6.4166 mm)

Beam:
24

Max Draft:
21' 1" (21.052 mm)

Speed, Capacities and Weight

Cruise Speed:
14 Knots (16.11 MPH)

Cruise Speed Range:
0 Kts.

Max Speed:
23 Knots (26.47 MPH)

Max Speed Range:
0 Kts.

Gross Tonnage:
198 Pounds

Water Capacity:
1000 Gallons.

Holding Tank:
0 Gallons

Fuel Capacity:
5000 Gallons

Accommodations

Total Cabins:

—

Total Berths:

—

Sleeps:

5

Total Heads:

5

Crew Cabin:

2

Crew Berths:

0

Crew Heads:

—

Hull and Deck Information

Hull Material:

Fiberglass and Plastic Yachts

Deck Material:

Fiberglass

Hull Configuration:

Semi-Displacement

Hull Designer:

Westport (USA)

Interior Designer:

Mueller Design Associates (USA)

Engine Information

Engines:

2

Manufacturer:

MTU

Engine Type:

Inboard

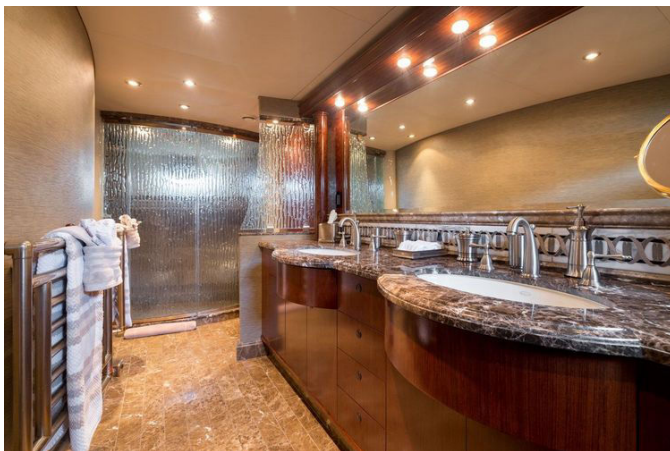
Fuel Type:

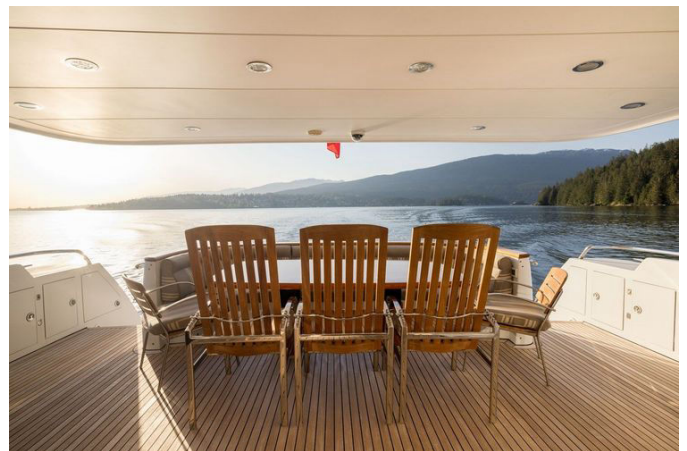
Diesel

GALLERY

















CONTACTS

Shestakov Yacht Sales is a brokerage company specializing in the sale and service of yachts worldwide. The company offers services for buying and selling both new and used motor yachts, sailing vessels, and luxury superyachts. They also provide yacht registration, insurance, technical maintenance, crew selection, and charter organization services across the U.S., Canada, Latin America, the Caribbean, and the Bahamas.

The founder and lead broker of the company is Andrey Shestakov, a licensed and certified expert with extensive experience in marine engineering and shipbuilding.

The company has an extensive network of partnerships with major yacht manufacturers worldwide and provides services in multiple languages, including Russian, Ukrainian, Spanish, and English. The office is in Dania Beach, Florida, USA.

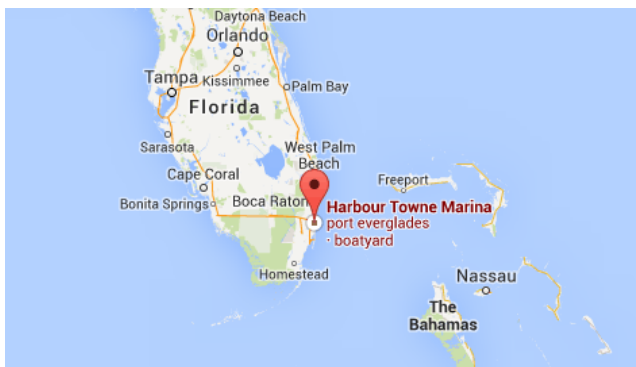
For more information and to view available yachts, you can visit the company's official website: <https://shestakovyachtsales.com>

Contact details

Phone: +1(954)274-4435

Email: andrey@shestakovyachtsales.com

Address



Harbour Towne Marina, 850 NE 3rd St,
STE 213,
Dania, FL 33004