

FAR NIENTE - SES YACHTS



Builder: [SES YACHTS](#)

LOA: 107' 0" (32.60 m)

Year Built: 2024

Beam: 22' 0" (6.70 m)

Model: HOEK CUSTOM MODERN CLASSIC

Min Draft: 8' 2" (2.50 m)

Price: \$12,342,486.36 USD Subject to change.

Max Draft: 8' 2" (2.50 m)

[See full listing on our website](#)

Location: Palma, Spain

Cruising Speed: 10 Knots (11.51 MPH)

Max Speed: 10.50 Knots (12.08 MPH)

TABLE OF CONTENTS

OVERVIEW	3
SPECIFICATIONS	4
Basic Information	4
Dimensions	4
Speed, Capacities and Weight	4
Accommodations	5
Hull and Deck Information	5
Engine Information	5
GALLERY	6
DETAILED DESCRIPTION	13
CONTACTS	19

OVERVIEW

€2m price reduction to sell

The striking Far Niente launched in 2024 and was conceived by the acclaimed Hoek Naval Architects. At 32m, this luxury superyacht pairs vintage-inspired lines with contemporary finesse and undeniable presence on the water. Built to RINA Commercial class, she has already established herself as a highly sought-after charter yacht, completing an inaugural Mediterranean season and, more recently, voyaging through Norway's dramatic fjords and coastlines. Commissioned by a seasoned British yachtsman eager to roam far-flung waters and introduce a fresh concept to the charter market, Far Niente embodies purposeful elegance and adventure. Her profile draws from early-1900s North Sea Herring Luggers, and she carries the graceful proportions for which Hoek Yacht Design is renowned worldwide. Informed by advanced fluid dynamics, she unites heritage with 21st century engineering via an optimised hull that heightens efficiency and comfort, delivering assured stabilisation both underway and at anchor.

SPECIFICATIONS

Basic Information

Model Year:
2024

Country:
Spain

Year Built:
2024

Dimensions

LOA:
107' 0" (32.60 m)

Beam:
22' 0" (6.70 m)

Min Draft:
8' 2" (2.50 m)

Max Draft:
8' 2" (2.50 m)

Speed, Capacities and Weight

Cruise Speed:
10 Knots (11.51 MPH)

Water Capacity:
1294.44 Gallons

Max Speed:
10.50 Knots (12.08 MPH)

Fuel Capacity:
3302.15 Gallons

Gross Tonnage:
179 Pounds

Accommodations

Total Heads:

6

Crew Cabin:

3

Hull and Deck Information

Hull Material:

Steel Yachts

Hull Designer:

Hoek Design Naval Architects

Deck Material:

Steel

Interior Designer:

Hoek & owner

Hull Configuration:

N/A

Engine Information

Engines:

1

Engine Type:

Inboard

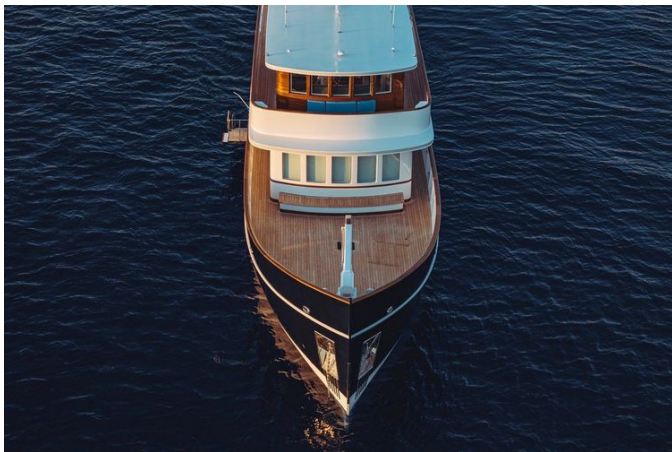
Manufacturer:

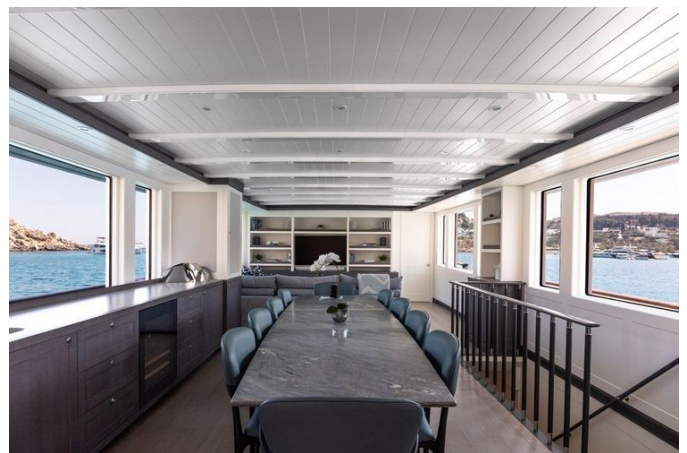
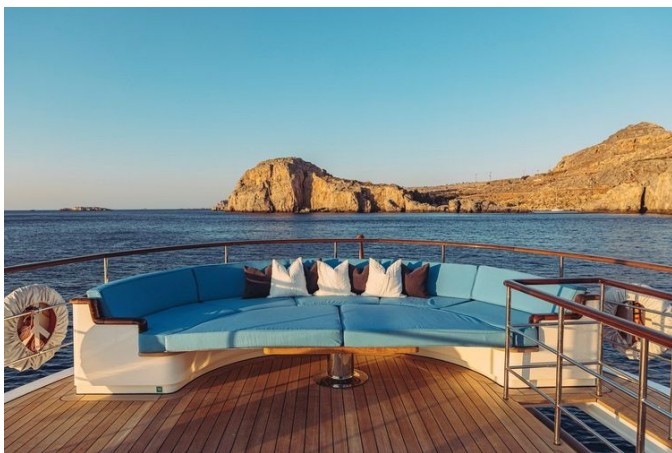
MAN

Fuel Type:

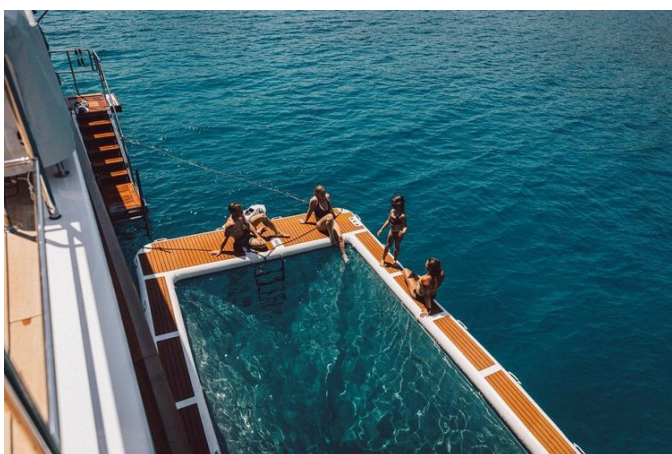
Diesel

GALLERY

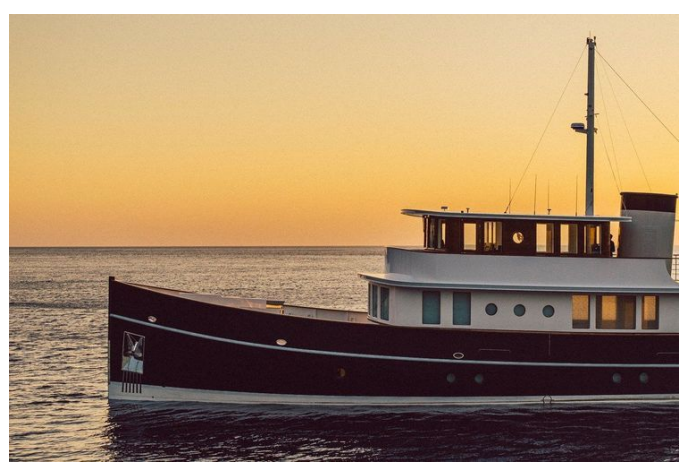














DETAILED DESCRIPTION

Summary

Built by SES Yachts to a design by Hoek, the full-custom 32.65-metre motoryacht Far Niente is a modern superyacht with classic lines, sophisticated style, and head-turning allure.

Launched in 2024 and built to RINA Commercial classification, Far Niente has already proved herself a popular charter option, completing her first season in the Mediterranean and more recently undertaking itineraries in Norway.

Commissioned by an experienced British yachtsman who sought to cruise in more unusual locations and introduce a new concept to the charter fleet, Far Niente embodies a spirit of exploration paired with refined elegance.

Her exterior lines draw inspiration from the North Sea Hering Luggers of the 1900s and she bears the elegant proportions for which Hoek Yacht Design is renowned. Informed by advanced fluid dynamics, tradition meets the twenty-first century in an optimised hull form that elevates efficiency and comfort, with enhanced stabilisation underway and at anchor.

Inside, a collaborative vision between the owners and Hoek has produced a distinctly contemporary interior. Structural beams are purposefully left visible, allowing head heights of 2.3 metres, while quarter-sawn grey washed oak cabinetry and light oak floorboards create an ambience of calm simplicity, accented by oceanic blues.

This tri-deck motoryacht accommodates ten guests in five cabins. The master suite lies forward on the main deck, and the four lower deck cabins are arranged as two doubles and two twins. Further accommodation is provided for a complement of six crew.

The main saloon is composed of two separate seating areas with a dining table

for ten positioned between them, and a second upper-deck saloon offers an additional and more intimate lounge space.

Outdoors, the spacious aft of the bridge deck invites al fresco dining and uninterrupted views to the horizon from steamer chair loungers.

Testament to her unique aesthetic and quality, Far Niente was a finalist in the categories of Best Interior Design, Best Naval Architecture, and Best Exterior Design at the 2025 Boat International Design & Innovation Awards.

Unlike true classics that struggle for volume, suffer higher noise and vibration, and typically come with larger maintenance bills, Far Niente boasts the latest operational, engineering, and navigational systems, as well as stowage for two 7-metre tenders plus water toys. She has a range of 2,000nm at an economical 9-knot cruising speed and a top speed of 10.5 knots.

Crowning her steel hull with a cold-moulded wooden composite superstructure is an unusual combination that brings compelling advantages: it avoids concerns of corrosion, benefits overall weight, and is especially effective for insulation, making it superior to building in aluminium and then cladding with teak.

Far Niente is offered for sale in immaculate condition by her original owner, with low engine hours. This Dutch design carries a noteworthy pedigree and will appeal to those who appreciate that maritime heritage and the modern superyacht lifestyle need not be mutually exclusive.

Specifications

Accommodation aboard Far Niente is arranged in a particularly attractive five-cabin layout that sleeps ten guests in total, a configuration highly sought after for charter yet equally ideal for private cruising with two families and more. The master cabin, situated forward of the saloon on the main deck, features a large central king-size double bed and a sweeping

one-hundred-eighty-degree panorama afforded by the generous square deckhouse windows surrounding the suite. Both the cabin and the owner's bathroom are beautifully appointed in a white New England style, with subtle pastel grey paneling, woodwork, and furnishings, and the owner's cabin also enjoys a 43-inch Sky glass television on a concealed electric lift. Below decks, reached via the central staircase in the saloon, lie the remaining guest quarters: four cabins sleeping eight guests in total, with two permanent doubles each boasting their own spacious bathrooms, and two twin cabins whose single beds can be pushed together to create doubles as required, each with adjoining bathrooms and finished to the same refined standard as the owner's suite.

The main saloon on the main deck is entered through twin opening varnished wooden doors aft and unfolds as a large open-plan living and dining area, superbly illuminated along its length by copious large-pane windows to port and starboard that frame exceptional views across the anchorage. A beautiful marble-topped dining table takes center stage and seats ten with ease, while forward a sumptuous, cozy lounging area with a long L-shaped sofa and ottoman invites relaxation in front of the 50-inch television with Sonos surround sound, connected to the ship's Starlink so guests may stream on demand. On deck, Far Niente's explorer yacht credentials come to the fore with wide, walk-around teak-laid side decks, reassuringly high bulwarks, and seamless, secure circulation—particularly appealing when cruising offshore or in more challenging sea conditions—enhanced by low-level lighting along the side decks. In addition to fold-out hydraulic side-boarding steps to starboard, boarding is also via the beautifully styled canoe-stern transom, which lowers to reveal a telescopic passerelle for effortless access.

The upper bridge deck, accessed internally from forward of the saloon or externally from the main deck cockpit, is notably expansive and a standout feature. Forward, the captain's bridge commands far-reaching views out to sea and across the foredeck and is equipped with the latest state-of-the-art suite

of Furuno navigation systems. Aft of the bridge, the VIP saloon/sky lounge offers an inviting retreat with panoramic anchorage vistas, a coffee machine, pantry facilities, and a double sofa. Handcrafted varnished mahogany doors open onto the broad, teak-laid aft deck, a wonderfully open, shaded heart of the yacht by day beneath a large suspended awning, where an al-fresco teak dining table with ten chairs encourages long, languid meals. Aft, a very large half-moon sunpad beckons beside two reclining teak steamer chairs, while a step forward of the beautifully varnished pilothouse reveals a secluded delight: a Portuguese bridge with private seating and excellent protection from the elements thanks to high bulwarks and a teak cap rail.

Underway, propulsion is delivered by one MAN D2676 LE477 SCR (IMO tier III) 368Kw (500hp) six-cylinder diesel with 950 hours run (July25), providing a cruising speed of 10 knots at 1600 rpm through a ZF gearbox with trolling function and driving one custom five-blade fixed-pitch propeller of 1.4 m diameter via a Wartsila PSE shaft stern gland. The engine room also features dedicated lube and sludge oil tanks with a pump manifolded to the main engine, gearbox, and generators. Tankage is substantial, with 4,900 litres of fresh water carried in two 2,450 L tanks, 12,500 litres of diesel total distributed in five tanks plus a 600 litre day tank, black and grey water capacity of 3,000 litres, sewage sludge capacity of 600 litres, oil and sludge tanks totaling 300 litres, and a 600 litre urea tank.

Onboard engineering systems include Sleipner Sidepower hydraulic bow and stern thrusters and Sleipner Side Power Vector fin stabilisers, Model VF1950, providing stabilisation both at rest and underway. Freshwater autonomy is enhanced by two Irodmar MSK18 water makers producing 180 L/hr each, and deck operations are supported by a 1,000 kg foredeck tender crane. The engine room's compressed air supply feeds various quick connections throughout the yacht, including hatch and door seals and the ship's raw-water seacocks. Steering is by DATA electro-hydraulic system. Ground tackle comprises two Danforth stainless steel anchors and two 100 m anchor chains.

Comfort and practicality continue with Techma electric toilets throughout, two 100 L Gianneschi hot water boilers, sewage treatment by Hamman HL-CONT Compact 0125, Webasto P168Q-S air conditioning comprising four 42,000 BTU units, Webasto interior heating via reverse cycle, and Fireboy FES engine room fire suppression.

Laundry facilities feature one Miele Professional 8 kg washing machine and one Miele Professional 8 kg dryer. The galley is equipped with a Miele induction hob, Miele electric oven, Miele extractor fan, and a Miele microwave, while refrigeration is provided by a Gaggenau Vario 400 fridge, a Gaggenau Vario 400 freezer, a Miele freezer, and a Smeg blast chiller. For entertaining, the saloon offers a 130 L drinks fridge, an ice maker, and a wine chiller for forty-two bottles; on the bridge deck a further 130 L drinks fridge and a sky lounge ice maker keep refreshments close at hand.

Navigation and communications are comprehensive, including two Furuno 19-inch TZT19F MFD touchscreen glass MFD's for radar, charts, and more; two Furuno F1-70 115mm displays for speed, log, depth, and data; a Furuno BBDS-1 sounder with Airmar transducers; a PG-700 Fluxgate compass; a Furuno 330B GPS antenna; a Furuno 711C Autopilot; a Furuno DRS4DL 4kW 19 Inch Radar Radome; a Furuno NX700B Navtex with digital display; a Furuno FA-70 AIS receiver and transceiver; a Furuno FM-8900s GMDSS; a Furuno FM-4800 DSC VHF, GPS, AIS with NMEA2000 and loud hailer; a Furuno SCX-20 satellite Quad compass; an Airmar 120X weather station; a Cassens & Plath magnetic compass; a rudder angle display; and a bridge-to-engine room intercom, augmented by four CCTV cameras and a Starlink High Speed Internet Receiver. Electrical architecture is equally robust, with service batteries totaling 1248ah @24v, a main engine bank of 225ah @24v, generator banks comprising two 135ah @24v, emergency batteries at 675ah @24v, and GMDSS batteries at 225ah @24v. Charging is managed by two Victron Skylla TG 24v/100a units for service, three Victron IP22 24v/16a units for the main engine and generators, a Victron Skylla TG 24v/50a for emergency batteries, and a 24v/30a GMDSS

charger. A Victron Quattro 5kva inverter supports seamless power conversion, and shore power is handled by a Marpower SPC-II Hybrid shore power converter rated at 400v 3ph 50Hz.

Electrical generation is delivered by two 35kw Kohler generators with 1,500 hours run (July25). For adventures on the water, the inventory includes a 4.5 m Zodiac RIB with a 50hp Yamaha outboard, waterskis, and a Yachtbeach 6 m inflatable pool. By separate negotiation, a chase boat—Novamarine Black Shiver 100EFB with twin Volvo D4 320hp diesel inboards, model year 2023—can further elevate the experience.

CONTACTS

Shestakov Yacht Sales is a brokerage company specializing in the sale and service of yachts worldwide. The company offers services for buying and selling both new and used motor yachts, sailing vessels, and luxury superyachts. They also provide yacht registration, insurance, technical maintenance, crew selection, and charter organization services across the U.S., Canada, Latin America, the Caribbean, and the Bahamas.

The founder and lead broker of the company is Andrey Shestakov, a licensed and certified expert with extensive experience in marine engineering and shipbuilding.

The company has an extensive network of partnerships with major yacht manufacturers worldwide and provides services in multiple languages, including Russian, Ukrainian, Spanish, and English. The office is in Dania Beach, Florida, USA.

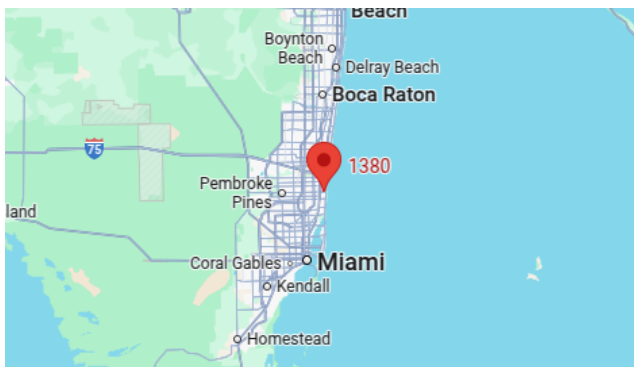
For more information and to view available yachts, you can visit the company's official website: <https://shestakovyachtsales.com>

Contact details

Phone: +1(954)274-4435

Email: andrey@shestakovyachtsales.com

Address



1380 Weeping Willow Way, Hollywood,
Florida 33019