



SHESTAKOV

Yacht Sales

NO SURRENDER - RIVA YACHT



Builder: [RIVA YACHT](#)

LOA: 110' 0" (33.53 m)

Year Built: 2020

Beam: 23' 0" (7.26 m)

Model: 110 DolceVita

Max Draft: 21' 4" (6.50 m)

Price: \$9,950,000 USD Subject to change.

Cruising Speed: 23 Knots (26.47 MPH)

[See full listing on our website](#)

Location: Fort Lauderdale, United States

Max Speed: 26 Knots (29.92 MPH)

If you would like to buy a yacht **NO SURRENDER - RIVA YACHT** or would like help answering any questions concerning purchasing, selling, or chartering a yacht, please call **+1(954)274-4435** or click here on <https://shestakovyachtsales.com>

TABLE OF CONTENTS

OVERVIEW	3
SPECIFICATIONS	4
Basic Information	4
Dimensions	4
Speed, Capacities and Weight	4
Accommodations	5
Hull and Deck Information	5
Engine Information	5
GALLERY	6
DETAILED DESCRIPTION	16
CONTACTS	22

OVERVIEW

Stored in a climate controlled facility, this striking Riva 110' flagship marries sumptuous interiors with cutting edge styling. Stretching nearly 110 feet and defined by a racy silhouette, she features expansive hull glazing and a glass skylight above the main salon, complemented by the award winning Submersible Hatch. Cloaked in a refined shark grey and maintained with an annual ceramic sealant, the yacht is fitted with dual Starlink connectivity, zero speed stabilizers, the Spot Zero freshwater system and a shallow 6.6 ft draft for versatile cruising. Recently refreshed and delivered fully staffed, this turnkey superyacht is ready for immediate enjoyment.

SPECIFICATIONS

Basic Information

Model Year:
2020

Country:
United States

Year Built:
2020

Dimensions

LOA:
110' 0" (33.53 m)

Max Draft:
21' 4" (6.50 m)

Beam:
23' 0" (7.26 m)

Speed, Capacities and Weight

Cruise Speed:
23 Knots (26.47 MPH)

Water Capacity:
792 Gallons

Max Speed:
26 Knots (29.92 MPH)

Fuel Capacity:
4042 Gallons

Gross Tonnage:
219 Pounds

Accommodations

Crew Cabin:

3

Hull and Deck Information

Hull Material:

Fiberglass and Plastic Yachts

Hull Designer:

N/A

Deck Material:

GRP

Interior Designer:

Officina Italiana Design

Hull Configuration:

Planing

Engine Information

Engines:

2

Engine Type:

Inboard

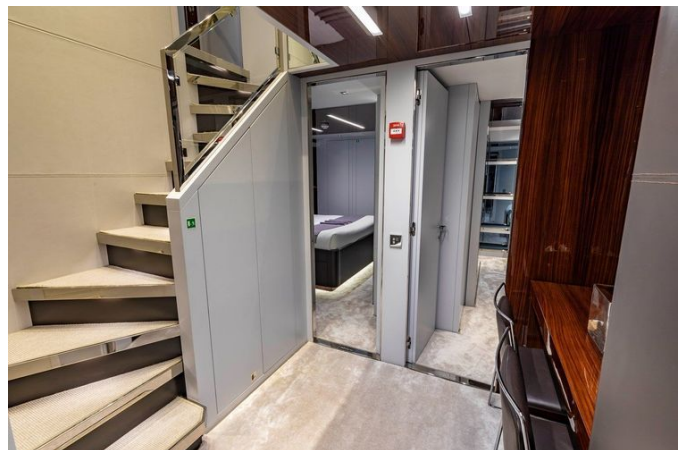
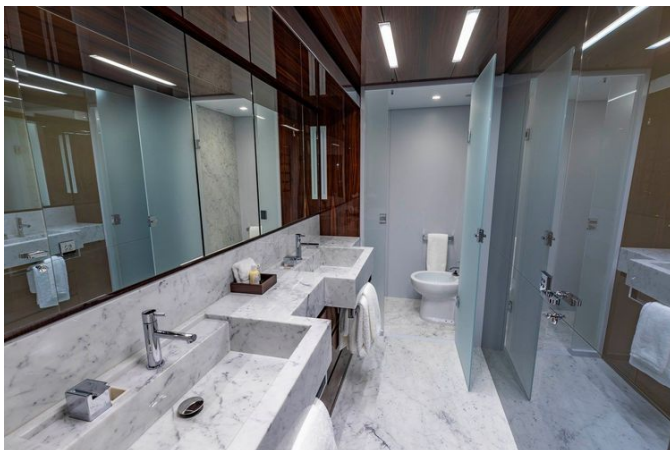
Manufacturer:

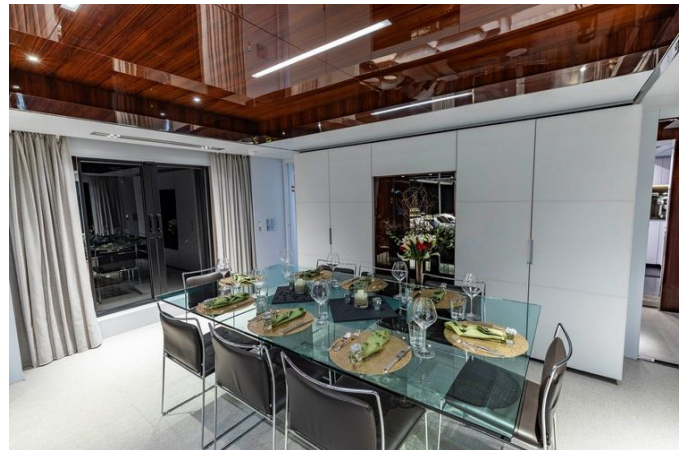
MTU

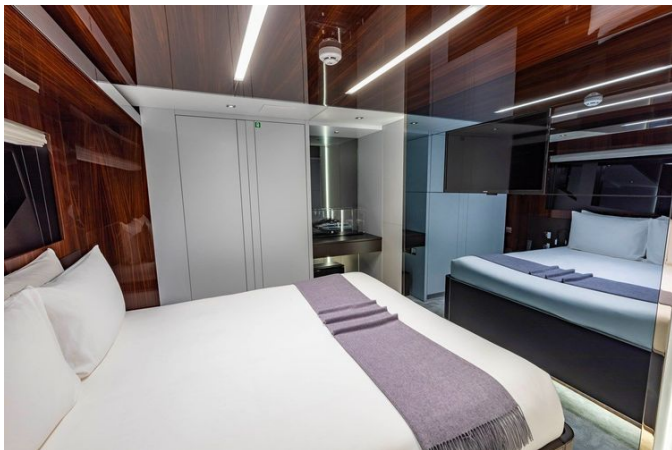
Fuel Type:

Diesel

GALLERY





















DETAILED DESCRIPTION

Overview

Beautifully maintained inside an enclosed building year round, this Riva 110 foot flagship exemplifies refined design, distinctive style, and impressive performance. Stretching nearly 110 feet with a beam of just over 11 feet, the yacht's sporty silhouette is defined by flowing lines inspired by the 100 foot Corsaro, a large hull window with an integrated porthole and an expansive glass ceiling edged in stainless steel above the salon. At the stern, the innovative, award winning Submersible Hatch provides effortless access to the water. Finished in an elegant shark grey ceramic coating that is renewed annually, the vessel blends modern luxury with advanced systems including dual Starlink internet, zero speed stabilizers for exceptional comfort at anchor and a Spot Zero water purification system. With a shallow 6.6 foot draft and recently refinished bottom gear, paint and underwater lights, the yacht is in superb mechanical and cosmetic condition. Professionally crewed and delivered turnkey, she is ready for immediate use. Conceived by Officina Italiana Design and bearing the iconic Riva aesthetic, the hull is a high performance planing design that cruises at 23 knots and tops out at 26 knots. A generous beach club incorporates a hydraulic swim platform and a garage for tender and water toys, the main deck accommodates a full beam owner's stateroom with a large ensuite and walk in wardrobe, and the expansive flybridge is appointed with bar, dining and lounging areas ideal for entertaining, while floor to ceiling salon windows bathe the interior in natural light.

Accommodations

The main salon presents an open-plan layout awash in daylight through

expansive windows, where refined contemporary Italian design meets an inviting, generous seating configuration. This bright and elegant living area naturally progresses forward to a formal dining salon appointed for eight to ten guests, thoughtfully sited for seamless service with direct and convenient access to the galley. The full-beam owner's stateroom located on the main deck offers a king-size bed, a private lounge, a vanity that doubles as a desk, and a spacious walk-in wardrobe; the ensuite is finished in premium stone and features twin basins and a large walk-in shower for a spa-like experience. Three VIP staterooms each provide queen beds and abundant storage, accompanied by individual ensuites with walk-in showers, while an additional guest cabin is configured with two single beds plus a Pullman berth to accommodate three guests, served by its own private ensuite with a walk-in shower. Crew quarters include three cabins designed to accommodate five crew in total.

Machinery

Twin MTU 16V 2000 M96L engines, each producing 2,638 HP, marry prodigious thrust with precision engineering. Recorded in May 2026, the port engine shows 2,993 hours and the starboard 2,992 hours, both mains routed through ZF Marine gearboxes and driving conventional shaft lines. Performance is provided as speed, hourly fuel consumption, range and corresponding RPM: at maximum she will attain 26 knots while consuming 210–230 GPH, offering roughly 350 NM of range at 2,450 RPM; at the yacht's favored cruise she sustains 23 knots on 160–180 GPH for about 430 NM at 2,100 RPM; and during economical passages expect 10–12 knots at 45–60 GPH, extending range to approximately 900–1,000 NM at 1,100–1,200 RPM.

Auxiliary equipment

Engineered for reliable independence, the electrical system delivers 120/240 V AC at 60 Hz via two Kohler 55 kW generators; the port unit shows approximately 5,944 hours and the starboard about 5,833 hours, with fuel burn that depends on load and typically ranges from roughly six to ten gallons per hour per generator. Twin shore-power connections rated at 100 A/240 V ensure seamless dockside power when alongside. Heavy-duty AGM battery banks are dedicated to main-engine starting, with separate AGM banks set aside for generator starts and an independent emergency battery system providing an additional layer of redundancy. Climate comfort is provided by a chilled-water air-conditioning system for consistent, quiet onboard temperature control.

Ancillary equipment

Configured for extended autonomy and refined control, the yacht carries two Idromar watermakers producing between 180 and 260 liters per hour to ensure an ample freshwater reserve. Confidence both on passage and at anchor is provided by trim tabs and ABT Trac fin stabilizers with zero-speed capability, while ABT bow and stern thrusters deliver smooth, precise maneuvering in tight situations. Steering feel is crisp thanks to an electro-hydraulic helm system, and fuel condition is safeguarded by a Racor fuel separator and filtration arrangement. A sewage system is not fitted.

Communication, navigation, and entertainment equipment

Every voyage is supported by a sophisticated communications and navigation suite: dual SATCOM capability is provided by Viasat and Starlink, and an

integrated onboard VoIP telephone system maintains seamless voice connectivity. Day-to-day communications are bolstered by a cellular router with an onboard signal booster and an internal crew intercom, while two Simrad VHF radios handle ship-to-ship and ship-to-shore communications; SSB is not equipped. The bridge is equipped for assured passage-making with a Furuno radar, a Furuno gyrocompass and a traditional magnetic compass, paired with a Simrad autopilot for precise helm control. Accurate sensor data is supplied by a Furuno depth sounder, a Furuno wind and speed log and Furuno GPS, all consolidated on Bioning integrated bridge monitoring and navigation displays, with weather fax available through the navigation system; Navtex is not fitted. For onboard leisure, guests enjoy flat-screen televisions in the salon and every stateroom, a centralized media server with Apple TV and streaming capability, and a premium surround sound system that elevates both the main salon and exterior entertainment areas.

Galley and laundry equipment

Designed to accommodate both culinary artistry and seamless service, the main galley and crew mess are equipped with a Miele induction cooktop paired with a convection oven and microwave, alongside a Miele full-height refrigerator and freezer unit and a Miele dishwasher. Crew areas are similarly well-appointed, featuring an electric cooktop in the crew mess, a wine cooler and a dedicated crew mess seating area that encourages relaxed respite between passages. Practicality meets luxury in the main laundry, fitted with a Miele washer and dryer to ensure effortless upkeep of linens and wardrobes during prolonged cruises.

Exterior decks

The flybridge opens into a spacious open-air living area, featuring a fully

equipped helm station with an accompanying secondary navigation station, a convivial bar, a dedicated dining area and a generous sunpad for relaxed lounging. Below, a shaded aft cockpit encourages a seamless indoor-outdoor connection, with comfortable seating for al fresco dining and direct access to the salon and the swim platform. At the water's edge, a hydraulic swim platform enhances sea-level enjoyment and provides convenient access to the tender garage and the vessel's collection of water toys.

Deck equipment

The foredeck is fitted with twin electric anchor windlasses operating a pair of stainless-steel anchors, each secured on 450 ft of galvanized chain for dependable holding. Aft, electric mooring capstans simplify close-quarters work and line handling. The tender garage is equipped with a hydraulic launch and recovery system for effortless deployment and retrieval, and a hydraulic telescopic passerelle provides a graceful, trouble-free boarding route. Completing the ensemble, a hydraulic teak swim platform unfolds into an inviting waterside terrace, offering elegant and easy access to the sea.

Security, firefighting, and safety equipment

Every voyage is underpinned by an uncompromising approach to safety and surveillance: an integrated CCTV network with multiple cameras keeps constant watch over the engine room, aft deck and side decks, with live feeds presented on monitoring displays both at the bridge and in the crew area. Fire protection is equally thorough, featuring an automatic fire suppression system installed in the engine room, portable fire extinguishers positioned throughout the yacht, and a comprehensive fire and smoke detection system that provides both audible and visual warnings. Life-saving provisions are extensive, including coastal and offshore life rafts, USCG-compliant life rings, a 406 MHz

EPIRB and a USCG safety flare kit, all complemented by a fully stocked onboard first-aid medical kit.

CONTACTS

Shestakov Yacht Sales is a brokerage company specializing in the sale and service of yachts worldwide. The company offers services for buying and selling both new and used motor yachts, sailing vessels, and luxury superyachts. They also provide yacht registration, insurance, technical maintenance, crew selection, and charter organization services across the U.S., Canada, Latin America, the Caribbean, and the Bahamas.

The founder and lead broker of the company is Andrey Shestakov, a licensed and certified expert with extensive experience in marine engineering and shipbuilding.

The company has an extensive network of partnerships with major yacht manufacturers worldwide and provides services in multiple languages, including Russian, Ukrainian, Spanish, and English. The office is in Dania Beach, Florida, USA.

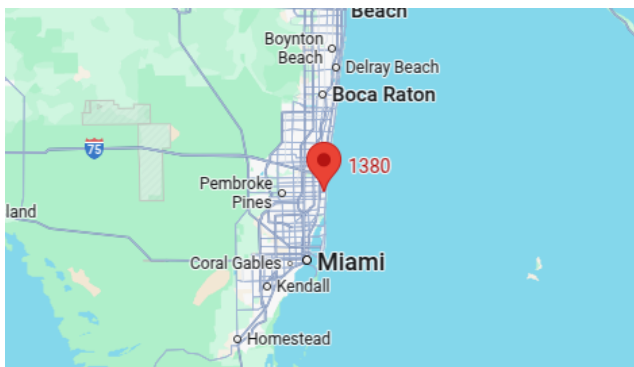
For more information and to view available yachts, you can visit the company's official website: <https://shestakovyachtsales.com>

Contact details

Phone: +1(954)274-4435

Email: andrey@shestakovyachtsales.com

Address



1380 Weeping Willow Way, Hollywood,
Florida 33019