

## SEA SHELL - FITTIPALDI YACHTS



**Builder:** [FITTIPALDI YACHTS](#)

**LOA:** 111' 0" (34 m)

**Year Built:** 2010

**Beam:** 26' 0" (8 m)

**Model:** N/A

**Min Draft:** 8' 2" (2.50 m)

**Price:** \$7,619,985.46 USD Subject to change.

**Max Draft:** 5' 11" (1.80 m)

[See full listing on our website](#)

**Location:** Cannes, France

**Cruising Speed:** 12 Knots (13.81 MPH)

**Max Speed:** 14 Knots (16.11 MPH)

---

# TABLE OF CONTENTS

---

<b>OVERVIEW .....</b>	<b>3</b>
<b>SPECIFICATIONS .....</b>	<b>4</b>
Basic Information .....	4
Dimensions .....	4
Speed, Capacities and Weight .....	4
Accommodations .....	5
Hull and Deck Information .....	5
Engine Information .....	5
<b>GALLERY .....</b>	<b>6</b>
<b>DETAILED DESCRIPTION .....</b>	<b>11</b>
<b>CONTACTS .....</b>	<b>13</b>

## OVERVIEW

---

While many vessels are designed to catch the eye for a moment, Sea Shell was imagined to remain in the memory. Launched in 2010 by the celebrated Brazilian yard Fittipaldi Yachts, this refined luxury motor yacht holds a distinctive position in the international superyacht market; commercially compliant with VAT fully paid, she offers the uncommon combination of charter revenue potential and operational flexibility alongside the freedom of unencumbered private ownership. Aboard Sea Shell, five tastefully appointed staterooms accommodate up to ten guests, presenting a calm sanctuary of sophisticated style and true bluewater comfort. Whether slicing through long ocean passages or resting quietly in a secluded cove, her layout and construction speak to a shipyard's heritage, exceptional craftsmanship and painstaking attention to detail. Sixteen years on, she retains the spirit of a cherished classic while boasting the robust structure of a yacht built for a lifetime at sea. Sea Shell is not merely a yacht — she is an invitation.

# SPECIFICATIONS

---

## Basic Information

---

**Model Year:**  
2010

**Country:**  
France

**Year Built:**  
2010

## Dimensions

---

**LOA:**  
111' 0" (34 m)

**Beam:**  
26' 0" (8 m)

**Min Draft:**  
8' 2" (2.50 m)

**Max Draft:**  
5' 11" (1.80 m)

## Speed, Capacities and Weight

---

**Cruise Speed:**  
12 Knots (13.81 MPH)

**Gross Tonnage:**  
260 Pounds

**Max Speed:**  
14 Knots (16.11 MPH)

## Accommodations

---

**Sleeps:**

7

**Crew Berths:**

6

**Total Heads:**

5

## Hull and Deck Information

---

**Hull Material:**

Aluminum Yachts

**Hull Designer:**

Fittipaldi Yachts

**Deck Material:**

Aluminum

**Interior Designer:**

Fittipaldi Yachts

**Hull Configuration:**

Monohull

## Engine Information

---

**Engines:**

2

**Engine Type:**

Inboard

**Manufacturer:**

Caterpillar

**Fuel Type:**

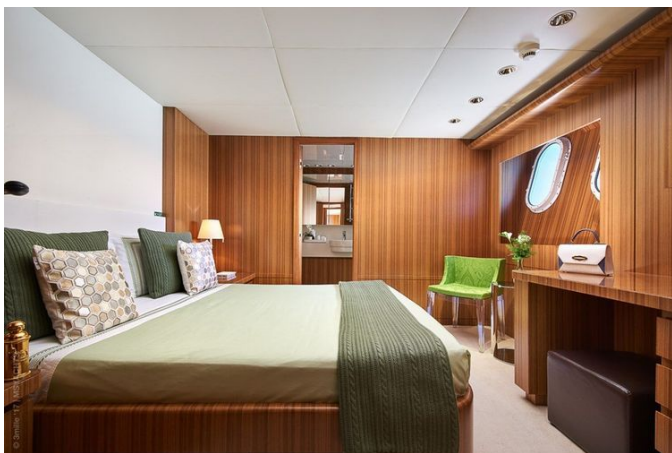
Diesel

# GALLERY











---

# DETAILED DESCRIPTION

---

## Guest accommodation

---

MY Sea Shell accommodates up to ten guests in five meticulously appointed en suite cabins, each equipped with individual climate control, a private safe, a bidet, and comprehensive entertainment systems—comfort and convenience delivered in a way seldom encountered on a yacht of this size. The main deck is home to a full-beam master suite that commands attention, centered around a generous king-size bed (200 x 180cm / 79 x 70in) and complemented by a dedicated writing desk and a comfortable port-side seating area. A private staircase leads down to a sumptuous en suite that features both a walk-in shower and a bathtub—an indulgence not often found—and the suite is completed by ample wardrobe space and an in-cabin safe, evoking the refinement of a boutique hotel.

Below, four additional cabins are thoughtfully arranged on the lower deck to ensure privacy and a serene escape from the salon and deck activity above. Two double cabins, one to port and one to starboard, each offer a double berth (190 x 150cm / 75 x 60in) and their own en suite shower rooms, while two twin cabins, likewise positioned port and starboard, provide twin berths (200 x 80cm / 79 x 32in per berth) with the same en suite configuration—an ideal layout for families, friends, or younger guests. All cabins enjoy generous headroom of 200cm (79in), with the master suite rising to 212cm (83in), creating an airy atmosphere that belies the yacht's compact exterior dimensions.

## Toys

---

Curated to deliver refined recreation at sea, the yacht is equipped with two

SeaBobs F5S that transform every dive into an exhilarating underwater excursion, alongside two inflatable stand-up paddleboards perfect for serene coastal glides. For guests craving adrenaline, a wakeboard and waterskis invite spirited runs, while a selection of inflatable towables provides playful, family-friendly thrills. A complete set of snorkeling gear rounds out the water-sports inventory, ready to reveal the vibrant marine life beneath the surface.

# CONTACTS

---

Shestakov Yacht Sales is a brokerage company specializing in the sale and service of yachts worldwide. The company offers services for buying and selling both new and used motor yachts, sailing vessels, and luxury superyachts. They also provide yacht registration, insurance, technical maintenance, crew selection, and charter organization services across the U.S., Canada, Latin America, the Caribbean, and the Bahamas.

The founder and lead broker of the company is Andrey Shestakov, a licensed and certified expert with extensive experience in marine engineering and shipbuilding.

The company has an extensive network of partnerships with major yacht manufacturers worldwide and provides services in multiple languages, including Russian, Ukrainian, Spanish, and English. The office is in Dania Beach, Florida, USA.

For more information and to view available yachts, you can visit the company's official website: <https://shestakovyachtsales.com>

## Contact details

---

**Phone:** +1(954)274-4435

**Email:** [andrey@shestakovyachtsales.com](mailto:andrey@shestakovyachtsales.com)

## Address

---



1380 Weeping Willow Way, Hollywood,  
Florida 33019