

MIDNIGHT SAGA - MOONEN



Builder: [Moonen](#)

LOA: 111' 0" (34.04 m)

Year Built: 2023

Beam: 24' 0" (7.52 m)

Model: 110

Max Draft: 21' 7" (6.58 m)

Price: \$15,007,908.01 USD Subject to change.

Cruising Speed: 12 Knots (13.81 MPH)

[See full listing on our website](#)

Location: Cannes, France

Max Speed: 13.40 Knots (15.42 MPH)

TABLE OF CONTENTS

| | |
|------------------------------------|-----------|
| OVERVIEW | 3 |
| SPECIFICATIONS | 4 |
| Basic Information | 4 |
| Dimensions | 4 |
| Speed, Capacities and Weight | 4 |
| Accommodations | 5 |
| Hull and Deck Information | 5 |
| Engine Information | 5 |
| GALLERY | 6 |
| DETAILED DESCRIPTION | 17 |
| CONTACTS | 26 |

OVERVIEW

MIDNIGHT SAGA is an exceptional long-range steel displacement motor yacht that exemplifies Dutch craftsmanship, conceived and executed through the collaboration of Moonen Yachts, René van de Velden, and Studio Indigo. Delivered in 2023, this luxurious superyacht offers a poised, refined passage at sea, blending ocean-capable engineering with elegant interiors and standout amenities throughout. Accommodation is generous, comfortably hosting up to 10 guests, while expansive aft and foredecks, a commodious bridge deck, and robust ocean-going systems equip her for true global cruising with impressive range and economical operation. Supported by a shipyard warranty and ranked among the newest launches in her class, MIDNIGHT SAGA presents a rare opportunity in the premium motor and explorer yacht market for the most discerning buyers.

SPECIFICATIONS

Basic Information

Category:
Motor yachts

Year Built:
2023

Model Year:
2023

Country:
France

Dimensions

LOA:
111' 0" (34.04 m)

Max Draft:
21' 7" (6.58 m)

Beam:
24' 0" (7.52 m)

Speed, Capacities and Weight

Cruise Speed:
12 Knots (13.81 MPH)

Water Capacity:
1756 Gallons

Max Speed:
13.40 Knots (15.42 MPH)

Fuel Capacity:
7291 Gallons

Gross Tonnage:
279 Pounds

Accommodations

Sleeps:

7

Crew Cabin:

3

Total Heads:

6

Crew Berths:

5

Hull and Deck Information

Hull Material:

Steel Yachts

Hull Designer:

Diana Yacht Design

Deck Material:

Steel

Interior Designer:

Studio Indigo Ltd

Hull Configuration:

Full Displacement

Engine Information

Engines:

2

Engine Type:

Inboard

Manufacturer:

Caterpillar

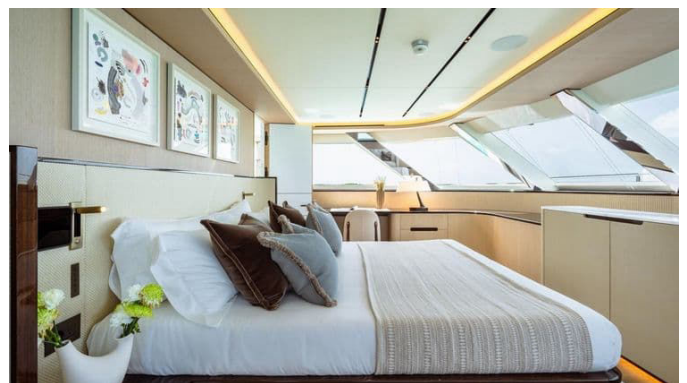
Fuel Type:

Diesel

GALLERY





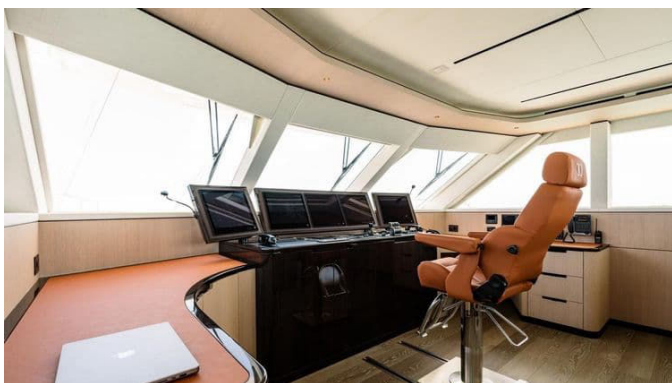






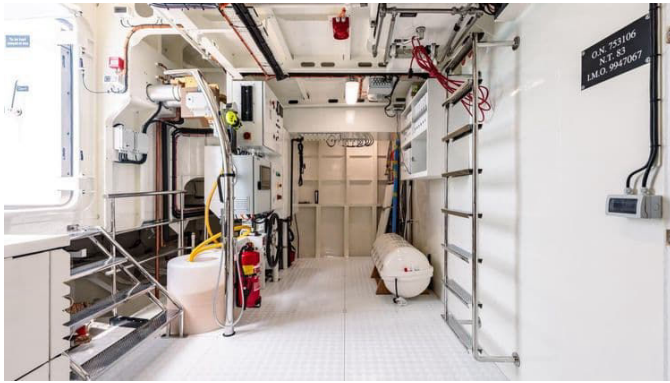












DETAILED DESCRIPTION

Overview & key features:

MIDNIGHT SAGA is an exceptional yacht offering spacious accommodations for up to ten guests across five beautiful cabins, crowned by an on-deck full-beam master suite whose unrivaled comfort and sweeping panoramic views set the tone for the entire interior. Generous windows throughout flood the living spaces with natural light and create a warmly inviting atmosphere. Designed by the renowned Studio Indigo, the interior of the Moonen 110 pairs stylish sophistication with true versatility; every detail is meticulously considered to elevate life on board. With over 7' (2m) of headroom, the yacht feels wonderfully open, while a flexible layout makes intelligent use of every inch so that, despite her dimensions, she reads larger thanks to her clever design and ample volume. Outside, the expertise of exterior designer René van der Velden shines through in expansive decks and a generous top deck spanning 775 square feet (72 square meters), where sun-drenched lounging and elegant alfresco dining both find ample, beautifully arranged space. Equipped with superyacht-grade systems in a refined, compact package, MIDNIGHT SAGA delivers unrestricted cruising and impressive efficiency, with a displacement hull speed of 13.4 knots and long-range transatlantic capability of 3,900 nautical miles at 9 knots for safe, stable passages wherever adventure leads. Practicality for extended voyaging is baked in, from a spacious galley and well-conceived crew areas to large tender storage accommodating craft up to 7.5m (25ft, 7in) longitudinally or 5m (16ft, 5in) transversely, with a maximum weight of 1,500kg/3307lbs. Operation is remarkably economical—fuel consumption can be as low as 57 liters per hour (15 US gallons per hour) underway at 9 knots with the generator running—while construction to Class and MLC compliance, near-silent acoustic performance, and fully Dutch build

quality are underscored by a full two-year shipyard warranty, with comprehensive coverage supported through April 2028. Other hallmarks include zero-speed stabilizers for absolute comfort, a shallow draft opening up thin-water havens such as The Bahamas, and full charter compliance for owners considering commercial programs. With few comparable yachts on the market, MIDNIGHT SAGA represents a rare opportunity for the discerning buyer. Pedigree matters here: she is the product of the proven team at Moonen Yachts with exterior by René van der Velden and interior by Studio Indigo, realized as superior Dutch design in steel hull and aluminium superstructure, built to Bureau Veritas Class and MCA-compliant. She combines economical speed capability with a 3,900 NM range, a primary on-deck stateroom with 180-degree views, and a flexible bridge deck that accommodates a tender up to 25ft, 7in (7.5m) longitudinally or 16ft, 5in (5m) transversely at a maximum weight of 1,500kg / 3307lbs.

Manufacturer-developed noise and vibration reduction technology enhances the near-silent ambience, and her shallow draft makes her ideal for the Bahamas, the Caribbean, and Australia's Great Barrier Reef.

Machinery

Power comes from two diesel engines Caterpillar C18 ACERT, showing Port 669hrs and Stbd 670hrs, each with A-rating output of 447 kW (600 bhp) at 1800 rpm. The yacht achieves a maximum speed of 13.4 knots at 50% load and 100% RPM and a comfortable cruising speed of 12 knots at 50% load and 85% RPM, with an economical range of 3,900 nautical miles at 9 knots. Propulsion integrates Twin Disc MGX 516-DC gearboxes with 3.06:1 reduction, Aventics Rexroth engine controls in the wheelhouse and wing stations, and a TIO Yacht Exhaust systems main exhaust with dry dempers. The shaft assembly by Shipmotion uses st.st. 1.4462, driving Veem five-blade fixed-pitch propellers of 1000mm diameter. Fuel consumption is impressively efficient: at 9 kn

approximately 15 USG / 60 L per hour, at 12 kn approximately 23 USG / 160 L per hour, and at 13 kn approximately 60 USG / 230 L per hour. Fuel treatment is handled by Rotan GP41-EFM and Rotan GP33-EM fuel oil pumps, an Alfa Laval MIB503 fuel oil purifier/separator, and Racor fuel filters.

Generator & auxiliary

The electrical architecture is engineered for true world cruising, with an onboard frequency and voltage converter enabling worldwide power usage. The basic main system is by Tijssen Elektro, paired with an Eekels Marpower SPC II 50kW/60KCA C2S12 frequency converter, dual 25m shore cables each served by a Glendenning CM8 cablemaster, and integrated monitoring, control, and alarms by Tijssen Elektro. Shipboard generation is delivered by two Kohler 55kW 55EFOZDJ units showing Port 997hrs and Stbd 994hrs. Interior lighting is BCM and Totallux LED, outdoor lighting by Savage Marine, and underwater illumination by Underwater lights Limited QT 75. Battery banks are comprehensively specified: two 24V 100Ah starter battery sets for the main engines/generators (Optima, sealed maintenance free VRLA AGM, eight batteries in total); one 24V 440Ah service battery set for navigation lights and auxiliary circuits (Victron or equal, sealed maintenance free VRLA GEL, four batteries in total); one 24V 660Ah emergency battery set for navigation/emergency lights and radio, sized for a minimum of five hours after main power black out (Victron or equal, sealed maintenance free VRLA GEL, six batteries in total); and one reserve radio (GMDSS) battery set 24V 220Ah, for a minimum of six hours after main power black out (Victron or equal, sealed maintenance free VRLA GEL, two batteries in total).

Tank capacities

Service and treatment systems are specified to superyacht standards: dirty and

lubricating oil pumps Gear 900/15:-10BT; a water maker and filtration suite Idromar MC2Duplex producing approximately 1648 G/day with sandfilter, UV sterilizer, water softener, and chlorine dosing unit; waste treatment by Hamann HL Cont Plus 125; grey and blackwater pumping by Gianesschi MV44G; bilge water separation via RWO Veolia OWS COM 0.25; generator exhaust water separators by Halyard with Halyard water locks; and a Gianneschi Ecoinox 418 hydrophore for reliable fresh water pressure.

Ancillary equipment

Climate aboard is exquisitely managed by an air conditioning system with automatic humidity control, ducted fresh air make up, low speed, low noise distribution evenly balanced in every room, and heating by MAVÉ MARI IX; the AC compressor and fan coils are likewise MAVÉ MARI IX. Essential handling and stabilization include CMC Marine LR90.7.90 electrical fin stabilizers effective both underway and at anchor, a Side Power SH 1000 bow thruster rated at 60kW, a central hydraulic system with power pack by Feebe Boarding Equipment, and a Trydo DW60/30/300 steering machine operating on 400VAC with manual backup for ultimate redundancy.

Safety & security equipment

Safety is comprehensive and compliant. Lifesaving provisions include four eight person life rafts with A pack in GRP containers positioned on the bridge deck sides and secured with hydrostatic releases; four lifebuoys mounted in recesses on the superstructure, two with MOB lights and two with floating lines; one EPIRB 406 MHz Automatic Orolia LTD; two SART Navico holding / Haberia Tellusart MK 11; and a pyrotechnic kit comprising three hand flares, three parachute rockets, and two smoke signals. Fire protection centers on a Sapphire Novec 1230 fixed firefighting system in the engine room,

complemented by fire, heat, and smoke detectors throughout. Security is enhanced with a CCTV suite of pan/tilt/zoom cameras, two on the main deck aft and one in the engine room.

Communication equipment

Redundant communications are fitted for blue water reliability: VHF DSC Class A Sailor 7222 and VHF DSC Class D Sailor 6210, two handheld VHF including GMDSS Ocean Signal V100, and two handheld UHF ATEX Sailor SP3965.

Satellite and long range capability include a Sailor 800B V Sat system, an Inmarsat C Sailor 6150 mini C non Solas unit, and an MF/HF Sailor 6310. A wireless computer network supports onboard connectivity, while a Panasonic internal telephone system serves the lazarette, engine room, and wheelhouse.

Navigation equipment

Navigation is rigorously specified: a Furuno radar and Furuno ECS system provide primary situational awareness; position and identification are handled by a Sailor GPS and Sailor AIS. The instrument package comprises Simrad wind, Airmar speed, and Airmar depth, complemented by a Simrad autopilot and heading system. Safety oversight includes a Furuno BNWAS (Bridge Navigation Watch Alarm System) and a Sailor Navtex. Search and rescue equipment includes Rescue SART (two items) by Sailor and a Sailor Smart find EPIRB.

Deck equipment

Boarding and ground tackle are engineered for elegance and strength. Access is via a Feebe Boarding Equipment PDT5500 passerelle and an Innavi boarding ladder. A hydraulic telescopic deck crane, installed starboard on the bridge deck aft, lifts 1500kg at 4.5 metres; it is powered by the central hydraulic

power pack, provided with backup power, painted to match the superstructure, and operated by a wired remote control. Anchoring systems include Muir VRC6000 windlasses with rollers and stoppers and Muir VC4000 capstans, with two Pool N anchors of 225kg each on 137.5 metre, 16mm chain. Aft of the wheelhouse, a Multiplex sun awning with two carbon poles features an integrated tensioning system and white sailcloth. For gracious outdoor living, the main deck aft, bridge deck aft, and foredeck each feature a fixed teak table standing on high polished stainless steel pedestals.

Audio / visual entertainment

Entertainment flows seamlessly throughout. The main salon features a 55" TV with 5.1 surround sound, iPad controls, and Apple TV, mirrored in the master stateroom with its own 55" TV, 5.1 surround sound, iPad controls, and Apple TV. Guest cabins are fitted with 2.0 stereo sound with iPad controls and Apple TV, as is the crew mess. Forward owner seating on the main deck enjoys 2.0 stereo sound, and both forward and aft areas of the bridge deck are served by 2.0 stereo sound. The entire entertainment backbone is integrated by Tijssen Audio Video.

Galley & domestic equipment

The yacht's domestic suite blends gourmet capability with professional reliability. On the lower deck, laundry is handled by two Miele PWM 908 EL DV washing machines and two Miele PDR 908 EL dryers, with additional cold storage by a Miele K31222 Ui refrigerator. The main deck galley is comprehensively equipped: a Vitrifrigo C115iX OCX2 refrigerator on the starboard side aft of the main deck, dual Miele KFN 7734 F fridge/freezers, a Miele H 7364 BP oven, a Miele G 5260 Vi Active plus dishwasher, a Miele DA 2698 exhaust hood, a Miele KM 7897 FL cooking plate, and a Bosch BFL634GS1

microwave. On the bridge deck, the alfresco service continues with a Wolf ICBTM15TF/S BBQ grill, a Vitrifrigo C180 OCX2 H20 refrigerator, and a Hoshizaki IM 30CWNE icemaker.

Special equipment & other features

Finishing and fittings are resolutely premium: upholstery by Vosco Jachtinterieur, a helm chair by Recaro, and sanitary fittings by Dornbracht. Household appliances are by Miele, Hoshizaki, Wolf, and Vitrifrigo, with a Miele exhaust hood and filter completing the galley's professional specification.

Tenders & watersport equipment

A truly complete watersports arsenal awaits. The inventory includes a 2025 Williams 550 Jet Tender; one 2025 SEADOO GTI 130HP; one YAMAHA SUPERJET; two JET SKI LIFTING KIT—new, fully certified and approved lifting kits for all Seadoo jet skis and Yamaha Waverunners, manufactured in accordance with EN1492 1:2000+A:2008 with a safe working load of 700kg; two SEABOB F9 in Star White standard colour; two SEABOB QUICK CHARGER; two SEABOB RACK; two SEABOB BAG; one FLITEBOARD PACKAGE WHITE (one Standard) including Explore battery upgrade; one SLINGSHOT WAKEFOIL—PUDDLE PUMPER WAKE FOIL PACKAGE; two JOBE LEONA 10.6 inflatable paddle board packages; one JOBE GAMMA inflatable kayak package; one JOBE HEMI COMBO waterskis—65"; one JOBE BUZZ TRAINERS waterskis—46" for kids; two JOBE TRANSFER SKI COMBO BLUE; one JOBE LOGO WAKEBOARD 138 & UNIT BINDINGS PACKAGE—board, bindings, bag and handle; one JOBE JINX YOUTH WAKEBOARD PACKAGE—128—board, bindings, bag and handle; one JOBE HOTSEAT TOWABLE 1P DONUT; one JOBE SCOUT TOWABLE 3P WING; one JOBE 6 person towable rope; one JOBE 2 person towable rope; twelve JOBE 4 BUCKLE LIFE VEST BLACK (2 x S / 4 x M / 2 x L / 2 x XL / 2 x XXL); eight JOBE

PERTH 3/2mm wetsuit men red; six JOBE SOFIA 3/2mm wetsuit women midnight blue; eight JOBE H2O SHOES 3mm GBS adult; four JOBE GRIP GLOVES; six JOBE BASE wakeboard helmet (2 x S / 2 x M / 2 x L); one BRAVO PUMP; two GOCYCLE G4i in Black; two PURE ELECTRIC AIR3 PRO+ scooter; four SCUBA PRO SILVER DIVE PACKAGE: Level BCD, MK17 EVO2/S600/R105, Compact Console, Sport Bag 105 (2 x S, 2 x M BCDs); four SCUBA PRO LEVEL BCD (2 x L, 2 x XL); ten SCUBA PRO JET SPORT ADJUSTABLE FINN (XS x 2, S x 4, M x 4, L x 3, XL x 2); ten SCUBA PRO SPECTRA MASK; ten SCUBA PRO SPECTRA SNORKEL; four SCUBA PRO 12L steel dive tank including valve and boot; six SCUBA PRO VARIOSOFT dive belt (S, M, L, XL); ten 1 kg soft weights; five 2 kg soft weights; five 2.5 kg soft weights; four SCUBA PRO DIVE PRO KIT comprising Mako Knife Titanium, Nova 720R Wide light, two batteries, charger, 15m reel, Deco Buoy Deluxe; six SCUBA PRO Anti Fog Spray 30ml; sixteen SCUBA PRO Multi Hanger; two SCUBA PRO heads up display dive computer package—Galileo HUD + Transmitter Smart+ Pro + mask with mount; four SCUBA PRO wrist computer—A2 with Transmitter Smart+ Pro; four SCUBA PRO SILVER snorkelling package: Zoom Lite, Escape Snorkel & Go Fin; four SCUBA PRO childrens snorkelling package: Spider Combo mask/snorkel, Sub Gear Snorkel Plus fins (28 31/32 34); one BAUER JNR II W ELECTRIC including 300 bar and 200 bar outlets via switchover valve; and two SSCO adjustable jetski trolley—marine grade aluminium, locking wheels, non marking leather bunkers.

Accommodations

Designed to host ten guests in utter comfort, MIDNIGHT SAGA offers five luxurious cabins and expansive social spaces. The full beam master stateroom on deck features a lounge area and a desk, commanding forward facing, 180 degree panoramic views that turn every sunrise into a private spectacle. Two double VIP staterooms and two twin guest cabins—each convertible from

twin to double—complete the guest accommodation, while the main salon and dining room on the main deck flow directly into a state of the art galley, ensuring both privacy and impeccable service. Outdoor living is elevated on an open air sun deck with semi covered lounge seating, armchairs, and sun loungers, and a day bed on the bridge deck fore connects down via stairs to casual seating on the main deck overlooking the bow. The Owner Stateroom is modern and forward facing with 180 degree panoramic views. The bridge deck centers on the wheelhouse, while the main deck comprises the main salon, dining room, galley, powder room, and one Owner's Suite with ensuite. The lower deck offers two VIP suites with ensuite and two twin cabins with ensuite. Crew are accommodated with a captain's cabin with ensuite and two twin crew cabins with ensuite, supported by a crew mess and laundry to keep operations smooth and discreet.

CONTACTS

Shestakov Yacht Sales is a brokerage company specializing in the sale and service of yachts worldwide. The company offers services for buying and selling both new and used motor yachts, sailing vessels, and luxury superyachts. They also provide yacht registration, insurance, technical maintenance, crew selection, and charter organization services across the U.S., Canada, Latin America, the Caribbean, and the Bahamas.

The founder and lead broker of the company is Andrey Shestakov, a licensed and certified expert with extensive experience in marine engineering and shipbuilding.

The company has an extensive network of partnerships with major yacht manufacturers worldwide and provides services in multiple languages, including Russian, Ukrainian, Spanish, and English. The office is in Dania Beach, Florida, USA.

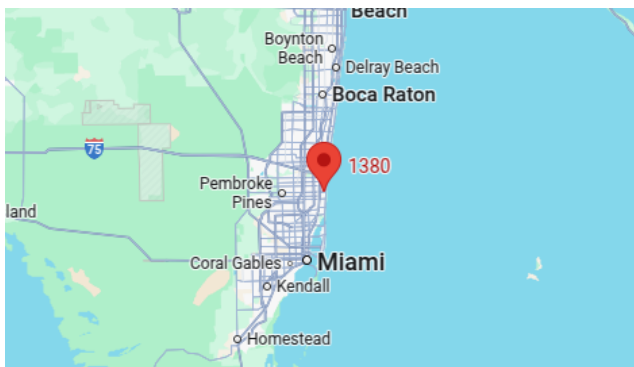
For more information and to view available yachts, you can visit the company's official website: <https://shestakovyachtsales.com>

Contact details

Phone: +1(954)274-4435

Email: andrey@shestakovyachtsales.com

Address



1380 Weeping Willow Way, Hollywood,
Florida 33019