



ANMAX - SANLORENZO



Builder: [Sanlorenzo](#)

LOA: 111' 0" (33.83 m)

Year Built: 2022

Min Draft: 13' 11" (4.25 m)

Model: SP110

Cruising Speed: 27 Knots (31.07 MPH)

Price: \$11,571,909.48 USD Subject to change.

[See full listing on our website](#)

Location: Viareggio, Italy

Max Speed: 37 Knots (42.58 MPH)

If you would like to buy a yacht **ANMAX - SANLORENZO** or would like help answering any questions concerning purchasing, selling, or chartering a yacht, please call **+1(954)274-4435** or click here on <https://shestakovyachtsales.com>

TABLE OF CONTENTS

OVERVIEW 3

SPECIFICATIONS 5

 Basic Information 5

 Dimensions 5

 Speed, Capacities and Weight 5

 Accommodations 5

 Hull and Deck Information 6

 Engine Information 6

GALLERY 7

DETAILED DESCRIPTION 13

CONTACTS 23

OVERVIEW

KEY FEATURES:

SCR and ASEA Integration: The Anmax stands out as the sole SP110 model tailored for cruising in the USA, equipped with SCR and ASEA shore power converters for seamless operation.

Award-Winning Design: Celebrated for its innovative approach, the Anmax project received the esteemed Compasso d'Oro Award in 2024, showcasing its exceptional craftsmanship.

Built for Excellence: Originally crafted for the owner of Sanlorenzo, this yacht for sale is packed with cutting-edge features, including SCR exhaust treatment, ASEA power converters, lithium batteries complemented by solar panels, and Seakeeper 35 stabilizers.

Smart Performance with Hydrojet Propulsion: Experience unparalleled performance with minimal fuel consumption. The Anmax guarantees a smooth, vibration-free journey at any speed, even in challenging waters, thanks to its advanced hydrojet propulsion system.

Innovative Layout & Design: This yacht boasts a spacious beach club/cockpit area with direct access to a stunning double-height lower lobby. The main salon is adorned with floor-to-ceiling sliding windows that frame breathtaking sea views, alongside a versatile bow lounge. Dining spaces, both inside and out, comfortably host 12-14 guests.

Enhanced Upgrades: The current owner has made significant enhancements, including the replacement of stainless steel railings with elegant glass and the installation of a Puro water softener. Comprehensive servicing of the engines, generators, and MJP water jets has been conducted, ensuring optimal performance for prospective buyers looking to buy a yacht in the current boat location.

Explore yacht sales in the current boat location and discover the luxury and sophistication of the Anmax.

SPECIFICATIONS

Basic Information

Category:
Motor yachts

Year Built:
2022

Model Year:
2022

Country:
Italy

Dimensions

LOA:
111' 0" (33.83 m)

Min Draft:
13' 11" (4.25 m)

Speed, Capacities and Weight

Cruise Speed:
27 Knots (31.07 MPH)

Water Capacity:
396 Gallons

Max Speed:
37 Knots (42.58 MPH)

Fuel Capacity:
3170 Gallons

Gross Tonnage:
220 Pounds

Accommodations

Total Heads:
5

Crew Cabin:
3

Hull and Deck Information

Hull Material:

Fiberglass and Plastic Yachts

Hull Designer:

Marco Arnaboldi (Italy)

Deck Material:

Fiberglass

Interior Designer:

Piero Lissoni (Italy)

Hull Configuration:

N/A

Engine Information

Engines:

6

Engine Type:

Inboard

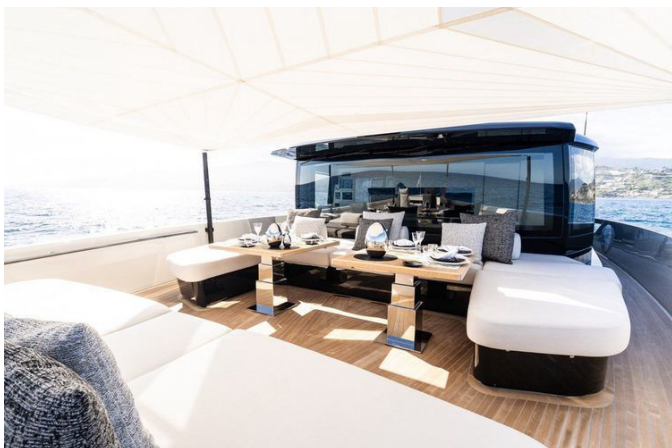
Manufacturer:

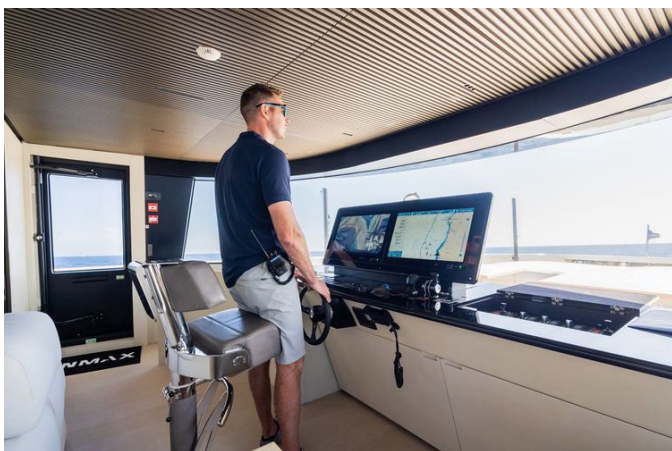
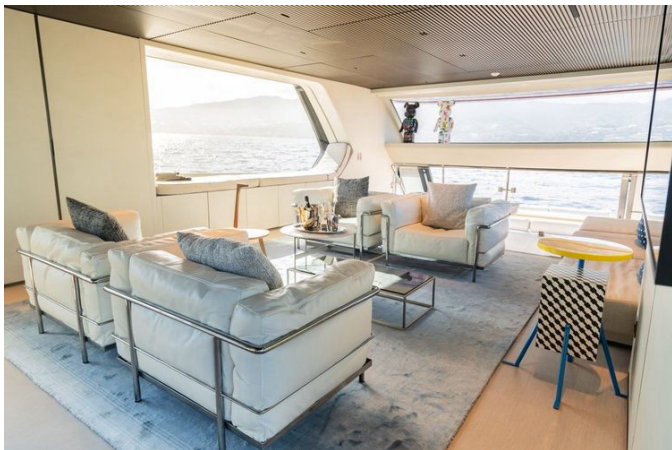
MAN

Fuel Type:

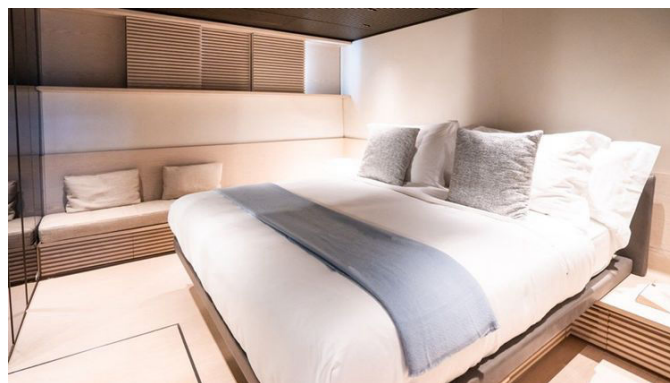
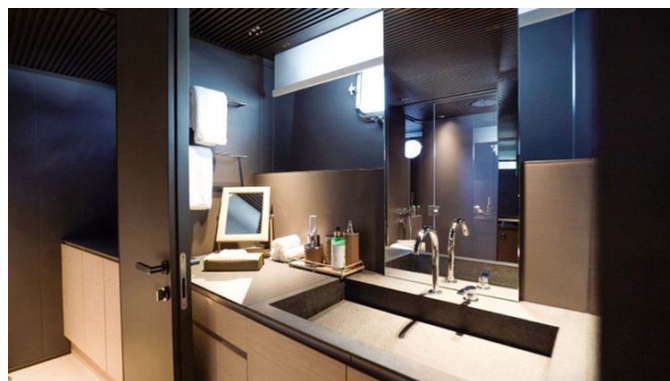
Diesel

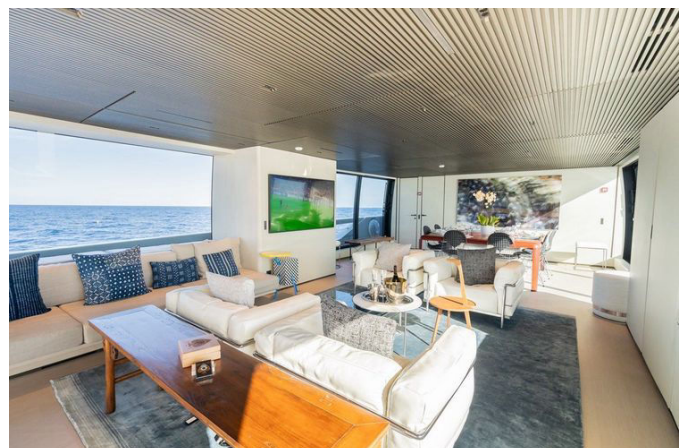
GALLERY













DETAILED DESCRIPTION

Construction

This yacht boasts a robust and durable construction, featuring a fiberglass hull and superstructure that ensure both strength and longevity on the open seas. The choice of fiberglass not only provides excellent resistance to the harsh marine environment but also contributes to a lighter vessel, enhancing performance and fuel efficiency. Complementing the sturdy build, the yacht is adorned with elegant teak decks, offering a touch of classic luxury and a non-slip surface for safety. The combination of these materials results in a vessel that is not only aesthetically pleasing but also engineered for optimal functionality and comfort, making it a perfect choice for discerning yacht enthusiasts.

Dimensions

This impressive yacht stretches to a length overall (L.O.A.) of 111.02 feet, equivalent to 33.84 meters, offering ample space for luxurious living and entertaining. The beam, or width, of the yacht is a generous 26.90 feet, or 8.20 meters, providing stability and roominess on board. When fully loaded, the yacht has a draft of 4.26 feet, or 1.30 meters, allowing it to navigate a variety of waters with ease. With a tonnage of 220, the yacht's displacement ranges from 110 tons at half-load to 118 tons when fully loaded, ensuring a smooth and balanced ride.

In terms of capacities, the yacht is equipped with a substantial fuel capacity of 3,170 US gallons, or 12,000 liters, which supports extended voyages without frequent refueling. The water capacity is 396 US gallons, or 1,500 liters, ensuring ample supply for all onboard needs. Additionally, the yacht features a

black water capacity of 105 US gallons, or 400 liters, for waste management. Performance-wise, the yacht can reach a maximum speed of 37.0 knots, covering a range of 385 nautical miles at 2400 RPM. For more leisurely journeys, the cruising speed is 27.0 knots, with an extended range of 433 nautical miles at 2000 RPM. These specifications highlight the yacht's capability to combine speed with efficiency, making it an ideal choice for both short trips and long-distance adventures.

Machinery

The yacht is powered by an impressive array of machinery, ensuring both performance and efficiency. At its heart are three MAN V12 engines, each delivering 2,000 horsepower, paired with three MJP Water Jet CSU 550 units, with the central unit serving as a booster. This setup is complemented by a smart hydro jet propulsion system, providing exceptional maneuverability and speed.

For electrical needs, the yacht is equipped with two 35 kW generators, ensuring a reliable power supply. The shore power system includes a 400Vac/3-phase/125A connection with three poles plus ground, located at the stern, and is supported by ASEA converters and a Cablemaster Glendinning system. The yacht also features a lithium battery system, offering 10 hours of autonomy in night mode and 6 hours during the day, allowing for zero emissions and a noise-free experience on board.

Comfort is further enhanced by a Dometic air conditioning system, ensuring a pleasant environment in all climates. The yacht's water systems are equally advanced, with Idromar watermakers and a fresh water purification system featuring a UV filter SH500. Stability and control are maintained through Seekeeper 35 trim tabs and stabilizers, a hydraulic bow thruster, and the MJP Water Jet Control System. Additionally, the bilge water filtration system includes an extra pump for grey and black water, complete with a by-pass,

ensuring efficient waste management. This comprehensive machinery setup underscores the yacht's commitment to delivering a seamless and luxurious experience on the water.

Communication, navigation & entertainment systems

The yacht is equipped with state-of-the-art communication, navigation, and entertainment systems, ensuring a seamless and enjoyable experience on the water. For communication, the vessel features the Furuno Diamond Package SSB, complemented by a comprehensive satellite and communication system that includes a TV-sat antenna Dome KVH TV8. The setup is further enhanced with a Starlink antenna, GPS antenna, and VHF antenna, providing robust connectivity. Internet access is facilitated by a sophisticated system with four SIM cards and four MIMO 4x4 5G antennas, managed by a SIM MANAGER EXTENDER and WIFI 6, all under the control of a KERIO management system. Navigational capabilities are equally impressive, with the FURUNO Diamond package at the core. A radar dome antenna is strategically placed at the bow, and additional Furuno displays in the Captain's cabin provide wind and anchor alarms. The yacht is also equipped with an additional Furuno weather station and a FLIR thermal camera for enhanced night vision, ensuring safe and efficient navigation in all conditions.

The entertainment system on board is nothing short of exceptional. The audio/video package has been upgraded by Lissoni, offering superior sound and visual experiences. Internet connectivity is supported by a Pepwave MBX with four SIM cards and four MIMO 4x4 5G antennas, again managed by the SIM MANAGER EXTENDER WIFI 6 and KERIO system for data traffic management. The audio experience is further elevated with two pop-up speakers with subwoofers in both the bow area and the aft cockpit, replacing the Diamond system, to deliver immersive sound quality throughout the yacht.

This comprehensive suite of systems ensures that every journey is both connected and entertaining.

Galley & laundry equipment

The yacht's galley is equipped with a range of high-quality appliances designed to meet all culinary needs while at sea. Central to the main galley is a versatile combo microwave steam oven, perfect for preparing a variety of dishes with ease. A wine cooler with a capacity for 36 bottles ensures that your favorite vintages are always at the perfect temperature. The galley also features a garbage disposal for easy waste management, an ice maker for refreshing drinks, and an under-top freezer alongside a fridge to keep all provisions fresh. For coffee enthusiasts, a countertop coffee machine is ready to brew the perfect cup.

In addition to the main galley, the yacht includes a drawer fridge located on the sun deck, providing convenient access to chilled beverages and snacks while enjoying the outdoor spaces.

For laundry needs, the yacht is equipped with Miele appliances, known for their reliability and efficiency, ensuring that all laundry tasks are handled with ease. This comprehensive suite of galley and laundry equipment ensures that life on board is as comfortable and convenient as possible, allowing you to focus on enjoying your time at sea.

Tenders & toys

The yacht is equipped with an impressive array of tenders and toys, ensuring endless fun and adventure on the water. The primary tender is a Williams Diesel Jet 505, boasting 110 horsepower and capable of accommodating up to nine people. With a maximum speed of 35 knots, it offers both speed and comfort for quick trips to shore or leisurely cruises.

For those seeking excitement and exploration, the yacht offers a variety of water toys. There are four Seabob F5S units, perfect for diving and gliding through the water with ease. The Hobie Mirage Eclipse pedal paddle provides a unique way to navigate the waves, combining the fun of paddleboarding with the efficiency of pedal power. For a thrilling ride above the water, the Fliteboard Air eFoil board offers an exhilarating experience of flying over the waves. Additionally, two Ocean OC2 transparent canoes allow for a serene and immersive paddling experience, offering a clear view of the underwater world. For those who enjoy stand-up paddleboarding, the Jobe Yarra Sup Inflatable board is available, providing stability and fun on the water.

This diverse collection of tenders and toys ensures that every guest can find their perfect way to enjoy the sea, whether it's through high-speed adventures or peaceful exploration.

Deck equipment

The yacht's deck equipment is designed to provide both functionality and luxury, ensuring a seamless experience on the water. The anchor windlass system is electric, offering effortless operation, and is complemented by electric aft warping capstans for easy maneuvering. The anchoring system includes a high-holding power stainless steel anchor weighing 130 kg, along with a main anchor equipped with a chain length of 27.5 meters and an 18mm diameter rope extending 126 meters. Additionally, there is a 14mm studless anchor chain, with a total length of 137.5 meters, divided into five lengths for optimal flexibility.

For handling tenders and other equipment, the yacht is equipped with a Cannalicious boat crane and davits. The electro-hydraulic gangway, crafted from stainless steel with a teak passageway, is retractable on the port side, providing easy access to and from the yacht. The swimming platform features teak decking and an electro-hydraulic power system for smooth motion.

The deck is further enhanced with teak for the sundeck, creating a warm and inviting atmosphere. LED underwater lights, with two on the transom and four on the sides, illuminate the yacht beautifully at night. Both the bow and stern are equipped with awnings supported by four carbon poles each, offering shade and comfort. Inflatable fenders with an inflator ensure protection, while an aluminum side ladder by MarQuipt with seven steps and a carbon bathing ladder provide easy access to the water.

The bow area is designed for relaxation, featuring a sofa with two additional teak tables that can be adjusted up and down, transforming the space into a sunbathing area with the included additional cushions. For secure mooring, two additional cleats are provided in the mooring area. This comprehensive deck equipment setup ensures that every aspect of your yachting experience is catered to with precision and style.

Security, fire fighting & safety equipment

The yacht is equipped with a comprehensive suite of security, fire fighting, and safety equipment, ensuring peace of mind for all on board. The security system features a sophisticated CCTV setup, with a 12-inch display for monitoring in the captain's cabin. This system includes two fixed cameras in the cockpit, one pan and tilt camera, and two fixed cameras in the engine room, with CCTV footage also available on the captain's cabin TV for added convenience.

Fire safety is paramount, and the yacht is equipped with a centralized engine-room firefighting system, utilizing either NOVEC or FM 200 technology. This is complemented by a saltwater fire fighting system and an emergency electric pump operating at 24V. A certified fire alarm system with smoke detectors is strategically placed in the engine room, garage, each cabin, saloon, and wheelhouse, along with a petrol vapors alarm in the garage. Portable fire extinguishers, including powder, foam, and CO2 types, are readily available

throughout the vessel.

In terms of safety equipment, the yacht is well-prepared with two life rafts and six life rings, ensuring ample resources in case of an emergency. An EPIRB (Emergency Position Indicating Radio Beacon) is on board, along with flares and a comprehensive set of medical equipment, providing essential support in critical situations. This extensive array of security, fire fighting, and safety equipment underscores the yacht's commitment to the well-being and protection of its passengers and crew.

Comments

The Anmax, the first model in Sanlorenzo's 'open series' line, stands as a testament to maritime luxury and engineering, presented for sale in immaculate condition and ready for turnkey operation. Delivered in 2022 for Massimo Perotti, the CEO and Chairman of Sanlorenzo, this yacht exemplifies innovation, performance, and aesthetic elegance. Measuring 33 meters in length, the SP110 is part of Sanlorenzo's Smart Performance range, combining high efficiency with a minimal environmental footprint. It features a sleek, modern design with a distinctive hull shape optimized for both speed and stability, ensuring a smooth and comfortable ride even in challenging sea conditions.

Designed by Zuccon International Studio, with naval architecture by Studio Arnaboldi and interior design by Lissoni & Partner's, Anmax was a groundbreaking project, unique and instantly recognizable on the water. Its striking appearance, combined with an eco-conscious power package, makes it a standout option in the sports yacht market. As of 2024, the SP110 model has won the prestigious Compasso d'Oro Award, a global design accolade established by Gio Ponti in 1954, celebrating projects that combine quality, innovation, and cultural impact.

Technologically, Anmax is at the forefront of modern yachting. It features solar

panels to run its hotel load and incorporates valuable SCR exhaust technology and ASEA shore power converters, making it the only model in its range suitable for use in the USA. The yacht is equipped with an advanced engine system that combines triple MAN diesel engines with hydro jet propulsion, offering both high performance and fuel efficiency. This hybrid system allows for reduced emissions and a quieter, more environmentally friendly cruising experience. State-of-the-art navigation and communication systems, including a FLIR infra-red camera, ensure safety and ease of operation for the crew.

Outdoor living is a key aspect of the Anmax experience. The yacht boasts multiple outdoor spaces, including an extremely spacious aft deck and an innovative beach club area that opens directly to the sea, providing an ideal spot for relaxation and water activities. These areas are designed to maximize enjoyment of the marine environment, with ample seating, sunbathing areas, and direct access to the water for swimming or launching watercraft.

The interior of the Anmax is a showcase of opulence and sophisticated design. Every detail, from the materials used to the layout of the spaces, reflects a commitment to luxury and comfort. The yacht offers spacious accommodations for up to eight guests in four beautifully appointed cabins on the lower deck, each with ensuite facilities. Additionally, the expansive salon and dining area are perfect for entertaining, featuring large sliding windows that flood the space with natural light and offer stunning sea views.

While already the pinnacle of design from Sanlorenzo, the current owner has made a series of beneficial upgrades, including modifying the railings from stainless steel to glass and installing a Puro water softener, among other enhancements. Comprehensive services have been performed on the engines, generators, and MJP water jets, ensuring peak performance. The yacht also comes with a 110hp Williams Diesel Jet 505 tender and a fantastic selection of state-of-the-art water toys, including a Fliteboard, Hobie Mirage Eclipse pedal paddle, eFoil board, transparent canoes, and a Jobe SUP.

Key features of the Anmax include SCR and ASEA integration, making it the only SP110 model optimized for cruising within the USA. Its award-winning design, recognized with the Compasso d'Oro Award in 2024, highlights its groundbreaking innovation. Originally designed for the owner of Sanlorenzo, the Anmax includes advanced features such as exhaust treatment through SCR, ASEA power converters, lithium batteries paired with solar panels, and Seakeeper 35 stabilizers. The smart performance with hydrojet propulsion ensures top-tier performance with low fuel consumption, providing smooth, vibration-free cruising at any speed, even in rough conditions. Its innovative layout and design boast a large open beach club/cockpit area with direct access to a double-height lower lobby, and the main salon features floor-to-ceiling sliding windows that open to stunning sea views, complemented by a versatile bow lounge. Dining areas, both indoors and outdoors, comfortably accommodate 12-14 guests. Enhanced upgrades by the current owner, including replacing stainless steel railings with glass and adding a Puro water softener, alongside comprehensive services on the engines, generators, and MJP water jets, ensure peak performance.

Refit & upgrades summary

The yacht has undergone a comprehensive refit and upgrade process, ensuring it is in pristine condition and ready for immediate use. One of the standout enhancements is the installation of elegant glass railings, which not only enhance the aesthetic appeal but also provide unobstructed views. In the main salon, extra cushions have been added to the windows, offering additional comfort and a touch of luxury. The dining experience has been elevated with an expanding ellipse teak table, featuring an innovative opening system that allows for versatile use and space optimization.

A Puro water softener has been installed, ensuring the highest quality water throughout the vessel. All necessary service maintenance has been

meticulously completed, including a 650-hour engine service, a 24-month MJP water jet service, a 2000-hour generator service, and a 2000-hour Seakeeper service. Additionally, the air conditioning system, watermaker, and anodes have been serviced or replaced, ensuring peak performance and reliability. The yacht is fully equipped with all the essentials for a luxurious experience, including several sets of tableware, glasses, towels, and bedlinen, making it 100% ready for the season. This turn-key condition means that the yacht is prepared for immediate enjoyment, offering a seamless transition from purchase to pleasure on the water.

CONTACTS

Shestakov Yacht Sales is a brokerage company specializing in the sale and service of yachts worldwide. The company offers services for buying and selling both new and used motor yachts, sailing vessels, and luxury superyachts. They also provide yacht registration, insurance, technical maintenance, crew selection, and charter organization services across the U.S., Canada, Latin America, the Caribbean, and the Bahamas.

The founder and lead broker of the company is Andrey Shestakov, a licensed and certified expert with extensive experience in marine engineering and shipbuilding.

The company has an extensive network of partnerships with major yacht manufacturers worldwide and provides services in multiple languages, including Russian, Ukrainian, Spanish, and English. The office is in Dania Beach, Florida, USA.

For more information and to view available yachts, you can visit the company's official website: <https://shestakovyachtsales.com>

Contact details

Phone: +1(954)274-4435

Email: andrey@shestakovyachtsales.com

Address



1380 Weeping Willow Way, Hollywood,
Florida 33019