

CAMARIK - FERRETTI CUSTOM LINE



Builder: [FERRETTI CUSTOM LINE](#)

LOA: 112' 0" (34.14 m)

Year Built: 2005

Beam: 23' 0" (7.08 m)

Model: FERRETTI CUSTOM LINE 112

Max Draft: 6' 1" (1.85 m)

Price: \$4,638,434.06 USD Subject to change.

Cruising Speed: 14 Knots (16.11 MPH)

[See full listing on our website](#)

Location: Barcelona, Spain

Max Speed: 28 Knots (32.22 MPH)

TABLE OF CONTENTS

OVERVIEW 3

SPECIFICATIONS 5

 Basic Information 5

 Dimensions 5

 Speed, Capacities and Weight 5

 Accommodations 6

 Hull and Deck Information 6

 Engine Information 6

GALLERY 7

DETAILED DESCRIPTION 16

CONTACTS 20

OVERVIEW

Luxurious 112 ft Yacht for Sale in Spain

Step aboard this magnificent 2005 yacht, a true masterpiece of design and engineering, now available for sale in the stunning waters of Spain. With a sleek and elegant profile, this vessel boasts a generous length of 112 feet and a beam of 23 feet, providing ample space for relaxation and entertainment. The yacht's planing hull, expertly crafted by Zuccon International Project, ensures a smooth and exhilarating ride, reaching cruising speeds of 14 knots and a maximum speed of 28 knots, making it perfect for those who crave adventure on the open sea.

As you explore the interior, you'll be captivated by the luxurious finishes and thoughtful design elements that create an inviting atmosphere.

Accommodating up to 10 guests in five beautifully appointed cabins, this yacht is ideal for family getaways or entertaining friends. With a total of six heads, including en-suite facilities, comfort and privacy are paramount. The crew quarters, featuring three cabins and five berths, ensure that your every need is catered to, allowing you to relax and enjoy your time on the water.

The yacht's impressive water capacity of 792.52 gallons and fuel capacity of 5,283.44 gallons provide the freedom to explore distant shores without the worry of frequent refueling. The fiberglass and plastic hull, combined with a GRP deck, not only enhances durability but also contributes to the yacht's striking aesthetic appeal.

Whether you're looking to buy a yacht for leisurely cruises along the Mediterranean or seeking a luxurious vessel for yacht sales in the current boat location, this stunning yacht is a perfect choice. With its exceptional design, powerful MTU engines, and a wealth of amenities, it promises an unparalleled experience on the water. Don't miss the opportunity to own this exquisite yacht, where luxury meets performance in every detail.

Indulge in the ultimate maritime lifestyle and make this remarkable yacht your own today!

SPECIFICATIONS

Basic Information

Category:
Motor yachts

Year Built:
2005

Model Year:
2005

Country:
Spain

Dimensions

LOA:
112' 0" (34.14 m)

Max Draft:
6' 1" (1.85 m)

Beam:
23' 0" (7.08 m)

Speed, Capacities and Weight

Cruise Speed:
14 Knots (16.11 MPH)

Water Capacity:
792.52 Gallons

Max Speed:
28 Knots (32.22 MPH)

Fuel Capacity:
5283.44 Gallons

Gross Tonnage:
268 Pounds

Accommodations

Sleeps:

10

Crew Cabin:

3

Total Heads:

6

Crew Berths:

5

Hull and Deck Information

Hull Material:

Fiberglass and Plastic Yachts

Hull Designer:

Zuccon International Project

Deck Material:

GRP

Interior Designer:

Zuccon International Project

Hull Configuration:

Planing

Engine Information

Engines:

2

Fuel Type:

Diesel

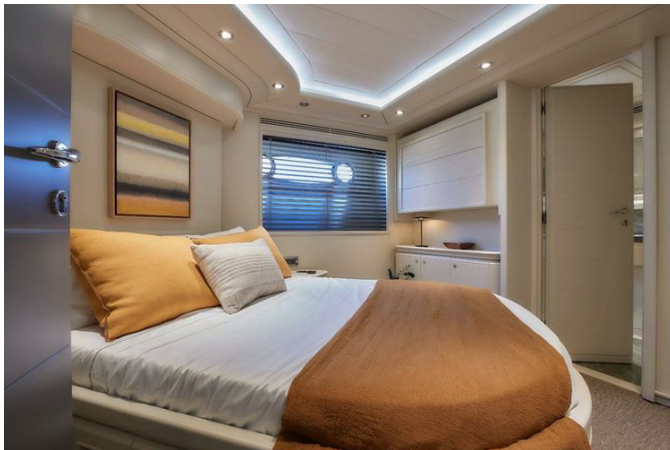
Manufacturer:

MTU

GALLERY



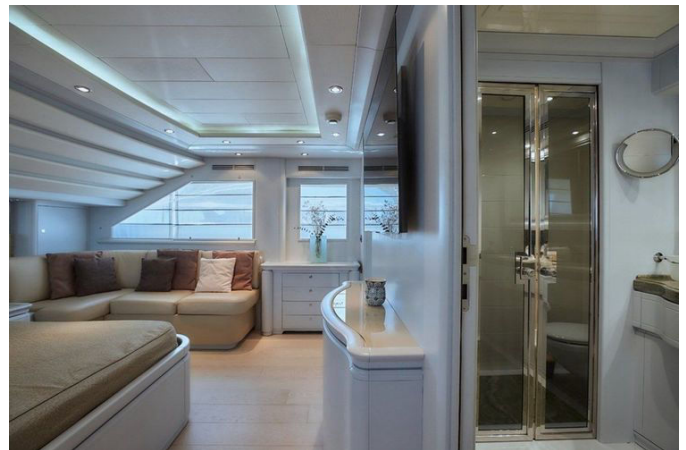


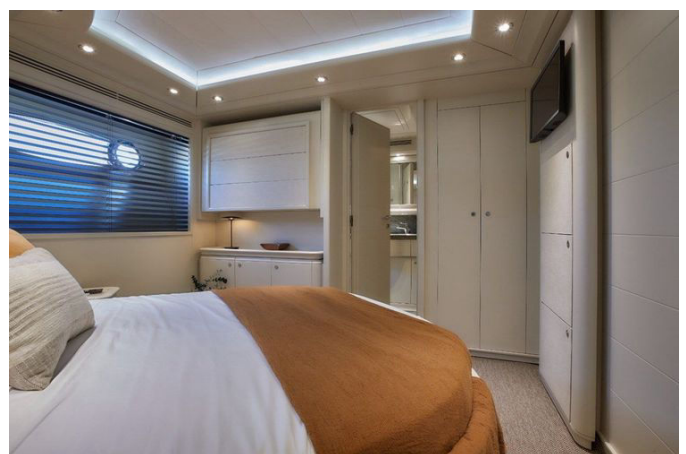
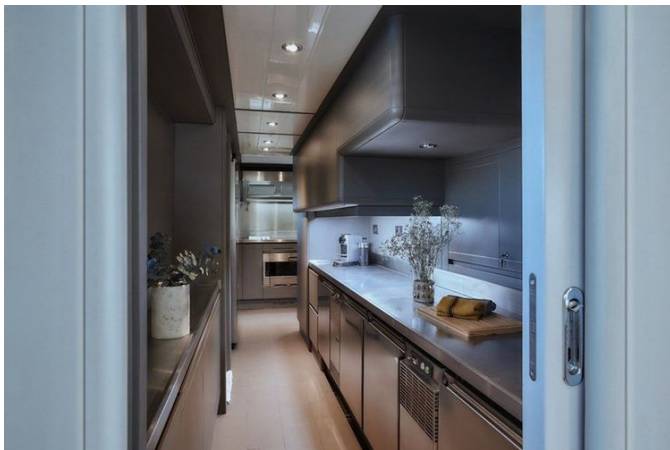














DETAILED DESCRIPTION

Equipment

This yacht is equipped with an impressive array of navigation, exterior, interior, entertainment, and domestic equipment, ensuring a luxurious and seamless experience on the water. The navigation suite includes a Furuno 72-mile open array radar antenna, a GPS antenna, and an automatic pilot Simrad AP50 IMO with a repeater on the flybridge. The AIS Koden RX/TX is connected to the plotter, and safety is enhanced with an Epirb and a VHF radio with a repeater on the fly. Communication is further supported by a Furuno DSC FS1570 SSB radio and a satellite phone antenna. The yacht also features a Simrad IS15 Tridata and wind system, multiple navigation displays including a new 15-inch touchscreen, and a CCTV display with cameras strategically placed on the sides, garage, and engine room. Additional navigation aids include a rudder angle indicator, a magnetic compass, electronic engine controls, a third control station in the cockpit, and an emergency rudder with an indicator in the control room. The radar arch is adorned with two domes, completing the comprehensive navigation package.

The exterior equipment is equally impressive, featuring hydraulic bow and stern thrusters for easy maneuvering. The yacht is equipped with two anchor winches, each with a 100-meter chain, and two 160 kg anchors, with one chain replaced in 2023. The aft garage, with its electric door, converts into a large swim platform, and a crane is available for the tender, which is an Astec 410 with a Yamaha 20hp outboard engine. The flybridge is fitted with a new bimini sun top, and the garage on the bow includes an electric door and crane for additional storage. Electric side doors provide access to the sidewalks, and the salon door is also electric. The yacht features a carbon manual swim ladder, two stern mooring winches, and flybridge furniture that includes a jacuzzi. The

cockpit is illuminated with dimmable lights, enhancing the ambiance.

Inside, the yacht is powered by two Kohler 55 KW generators, with 5000 and 5300 hours respectively, and is fully air-conditioned with a capacity of 188,000 BTU across three compressors. Shore power is available with automatic battery chargers for service, engines, and generators/electronics, with new service batteries installed in 2022. Stability is ensured with Mitsubishi zero-speed gyro stabilizers, and safety is prioritized with a fire and smoke system. The yacht is equipped with an Idromar watermaker producing 180 liters per hour, an Alpha Laval system for fuel treatment, and a black water system with discharge. The interior features electric WCs, two water heaters installed in 2021, a water purifier, and luxurious marble countertops and floors in the bathrooms.

Entertainment on board is top-notch, with a Yamaha sound system in the salon and main cabin, and connected WiFi with an iPad controlling speakers in the salon, stern, and flybridge, all individually adjustable. The salon and owner's cabin boast 55-inch TVs, while the four guest cabins are equipped with flat-screen Smart TVs. A Raymarine satellite TV antenna with decoders is available in the salon and cabins, and a sound system is also present in the galley and wheelhouse.

The galley and domestic equipment are designed for convenience and luxury, featuring two Gaggenau ceramic hobs and a grill, a fridge and freezer with two doors, a second fridge and freezer, and both a Gaggenau oven and steam oven. A Teca microwave oven, dishwasher, double sink, and wine fridge are also included. The bar furniture in the salon comes with a fridge and ice maker, and the flybridge wet bar is equipped with a fridge, grill, and wash basin. Laundry needs are met with a washing machine, a washing machine/dryer, and dryers, while the crew mess includes a fridge and freezer. This yacht is a masterpiece of engineering and design, offering unparalleled comfort and functionality for its occupants.

Layout

The yacht's layout is designed to provide both luxury and functionality, accommodating up to 11 guests in five en-suite cabins. Each cabin is a contemporary, well-appointed, and spacious retreat, ensuring guests enjoy the utmost comfort. The accommodation includes five cabins with a total of 11 berths and six heads, offering ample space and privacy for all guests.

The crew is also well-catered for, with three crew cabins providing six berths and three heads, ensuring the crew can operate efficiently and comfortably.

The configuration of the yacht is thoughtfully designed across three main areas. The flybridge is accessible from the raised helm station and the cockpit, featuring an aft area with sunbeds, a jacuzzi, a sofa and table, a barbecue, and a fridge, as well as the fly helm, making it a perfect spot for relaxation and entertainment.

On the main deck, guests can enjoy a bow solarium and an aft area cockpit with a dining table, ideal for alfresco dining. The large salon is equipped with bar furniture, and the dining area is perfect for formal meals. The galley is completely equipped, ensuring all culinary needs are met, and a day head is conveniently located on this deck. The main deck also houses a large master cabin, featuring a king-size island bed, a walk-in wardrobe, and an en-suite bathroom, providing a luxurious private space for the owner.

The lower deck is home to three VIP cabins, each with double island beds and en-suite bathrooms, offering guests a lavish stay. Additionally, there is a twin cabin with two single beds and a pullman berth, also with an en-suite bathroom. This twin cabin can easily convert into a wellness room with a professional massage table, adding an extra layer of luxury and relaxation. The lower deck also includes crew cabins with a crew mess, ensuring the crew has a dedicated space for their needs.

Overall, the yacht's layout is meticulously designed to offer a perfect blend of

luxury, comfort, and practicality, making it an ideal choice for those seeking an exceptional yachting experience.

Disclaimer

The information provided about this vessel by the Company is offered in good faith, yet the accuracy and condition of the vessel cannot be guaranteed. Prospective buyers are strongly advised to have their agents or surveyors thoroughly investigate any details they wish to validate. It is important to note that this vessel may be subject to prior sale, price adjustments, or withdrawal without prior notice.

CONTACTS

Shestakov Yacht Sales is a brokerage company specializing in the sale and service of yachts worldwide. The company offers services for buying and selling both new and used motor yachts, sailing vessels, and luxury superyachts. They also provide yacht registration, insurance, technical maintenance, crew selection, and charter organization services across the U.S., Canada, Latin America, the Caribbean, and the Bahamas.

The founder and lead broker of the company is Andrey Shestakov, a licensed and certified expert with extensive experience in marine engineering and shipbuilding.

The company has an extensive network of partnerships with major yacht manufacturers worldwide and provides services in multiple languages, including Russian, Ukrainian, Spanish, and English. The office is in Dania Beach, Florida, USA.

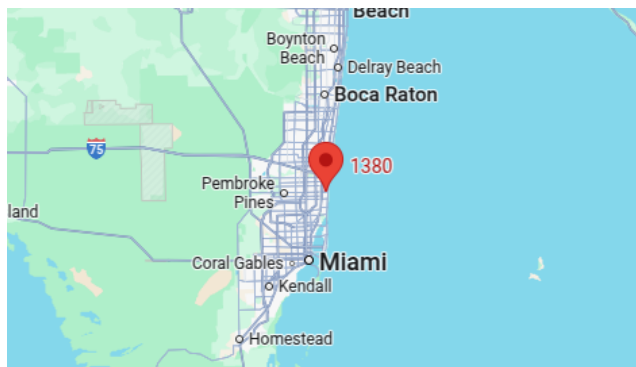
For more information and to view available yachts, you can visit the company's official website: <https://shestakovyachtsales.com>

Contact details

Phone: +1(954)274-4435

Email: andrey@shestakovyachtsales.com

Address



1380 Weeping Willow Way, Hollywood,
Florida 33019