



SHESTAKOV

Yacht Sales

CHECKERED PAST - WESTPORT



Builder: [WESTPORT](#)

LOA: 112' 0" (34.14 m)

Year Built: 1999

Beam: 24' 0" (7.32 m)

Model: 112

Max Draft: 18' 1" (5.50 m)

Price: \$2,875,000 USD Subject to change.

Cruising Speed: 18 Knots (20.71 MPH)

[See full listing on our website](#)

Location: Daytona Beach, United States

Max Speed: 24 Knots (27.62 MPH)

If you would like to buy a yacht **CHECKERED PAST - WESTPORT** or would like help answering any questions concerning purchasing, selling, or chartering a yacht, please call **+1(954)274-4435** or click here on <https://shestakovyachtsales.com>

TABLE OF CONTENTS

OVERVIEW	3
SPECIFICATIONS	4
Basic Information	4
Dimensions	4
Speed, Capacities and Weight	4
Accommodations	5
Hull and Deck Information	5
Engine Information	5
GALLERY	6
DETAILED DESCRIPTION	18
CONTACTS	22

OVERVIEW

CHECKERED PAST is offered for sale at a deliberately aggressive price intended to facilitate a swift transaction. Purchased by the current owner in 2019, this Westport 112 raised-pilothouse has been operated exclusively for private family cruising throughout Florida and The Bahamas and has been professionally maintained by a full-time crew; she is presently lying in Daytona, Florida, available until sold. Inspections and offers are encouraged — this is a rare opportunity to acquire a Westport 112 raised-pilothouse superyacht at an exceptionally compelling price.

SPECIFICATIONS

Basic Information

Model Year:
1999

Country:
United States

Year Built:
1999

Dimensions

LOA:
112' 0" (34.14 m)

Max Draft:
18' 1" (5.50 m)

Beam:
24' 0" (7.32 m)

Speed, Capacities and Weight

Cruise Speed:
18 Knots (20.71 MPH)

Water Capacity:
1012 Gallons

Max Speed:
24 Knots (27.62 MPH)

Fuel Capacity:
5500 Gallons

Gross Tonnage:
200 Pounds

Accommodations

Total Heads:

5

Crew Cabin:

3

Hull and Deck Information

Hull Material:

Fiberglass and Plastic Yachts

Hull Designer:

Westport

Deck Material:

Composite

Interior Designer:

Pacific Custom Interiors

Hull Configuration:

Semi-Displacement

Engine Information

Engines:

2

Engine Type:

Inboard

Manufacturer:

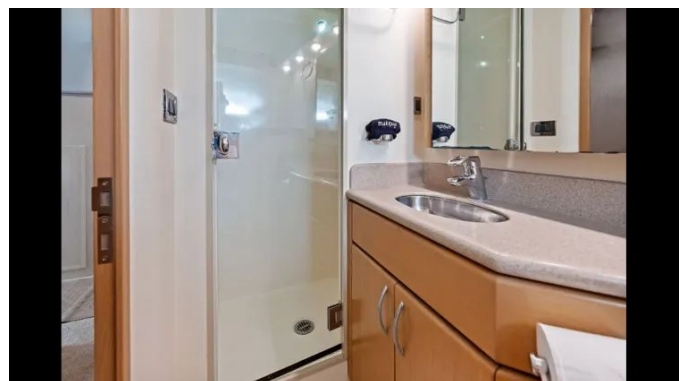
MTU

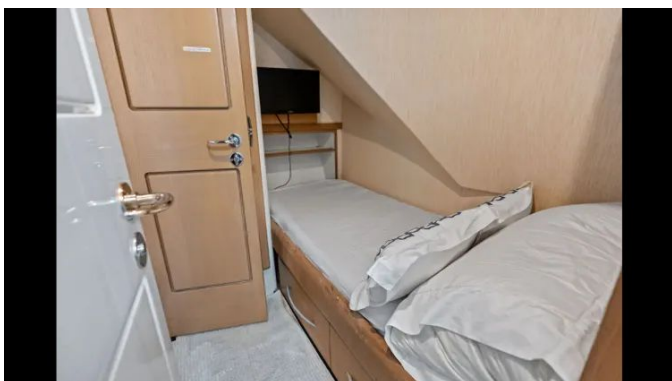
Fuel Type:

Diesel

GALLERY

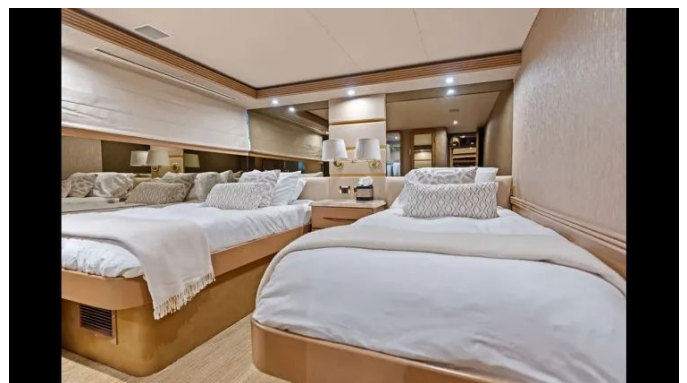


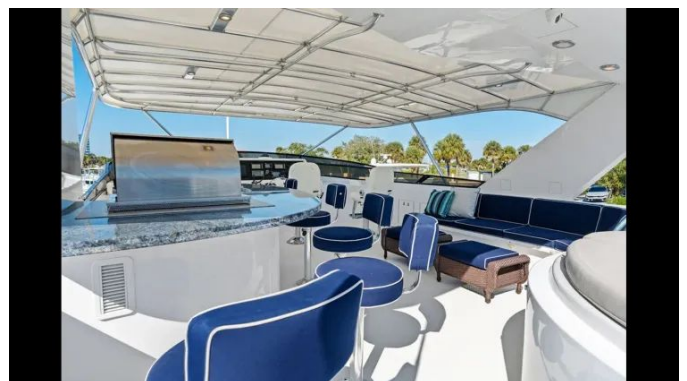






















DETAILED DESCRIPTION

Main deck

Access to the main salon is gained through double sliding glass doors off the aft deck, immediately revealing CHECKERED PAST's expansive twenty-four-foot beam, a full-beam salon and a forward dining salon that together amplify the sense of space. Marble surfaces are artfully paired with warm oak tones throughout, while to port a marble-topped sunken bar, appointed with four bar stools, an icemaker, a sink and abundant storage, creates an inviting focal point for entertaining. To starboard, a generous L-shaped sofa is accompanied by two ottoman tables, and an integrated entertainment center houses a television on a lift that retracts when not in use, preserving unobstructed vistas and a pristine interior line. Forward, a formal dining area is centered on a large round glass-top table surrounded by eight upholstered chairs beneath a custom soffit with a decorative fixture and dimmable recessed lighting to set the ambience. Built-in buffet cabinetry to port and starboard features marble surfaces with tailored storage below for china, glassware, flatware and service pieces, while the forward bulkhead displays two glass-front, illuminated shelving units with storage beneath and an adjacent fifty-bottle wine cooler for curated selections. The day head is located just forward of the dining area to starboard, and ahead the raised pilothouse provides access to the lower-deck accommodations on the starboard side. The gourmet-style galley is situated forward and includes a built-in U-shaped settee for informal dining, and continuing forward of the galley—with its own private entrance—is the VIP queen stateroom complete with a private bath.

Accommodations

Reached via double doors on the lower deck, the full-beam master suite

centers on a California king berth with built-in storage drawers beneath and an upholstered, mirrored bulkhead, while swing-arm brass reading lights flank the bed above integrated nightstands. A bespoke overhead soffit melds upholstered padding, rich wood veneers and subtle accent lighting for dramatic effect; to port a custom 16-drawer dresser finished with a granite top provides extensive storage, and to starboard an upholstered settee with a storage end table and headside cabinetry sits adjacent to a walk-in, cedar-lined closet. The master ensuite is arranged as a refined His and Her configuration with marble vanity tops and marble flooring, Kohler sinks appointed with chrome and gold fixtures, mirrored vanity cabinets and an overhead mirror, and features a crema marble walk-through shower and a Kohler Jacuzzi tub separated by tempered glass panels that elegantly delineate the two sides. Forward of the galley, a private stair descends to the VIP stateroom, where a centerline queen berth with storage below is bookended by decorative built-in shelving to port and starboard. A comfortable upholstered settee occupies the starboard side, complemented by a built-in five-drawer dresser aft and a cedar-lined hanging closet forward, while entertainment is provided by a Sony 42-inch LED TV and two overhead speakers. The VIP ensuite is appointed with a marble vanity top, a polished Sateo sink and a shower enclosed by a glass door.

Directly opposite the master are two guest staterooms: on the port side a queen berth with under-bed storage is flanked by two built-in nightstands, a six-drawer dresser topped in granite and a cedar-lined closet with full-length mirrors; on the starboard side the twin guest stateroom features a center nightstand with a granite top and three drawers, two swing-arm reading lights and a built-in three-drawer dresser. Both guest cabins are equipped with a Sony 40-inch TV and Boston Acoustics overhead speakers, and each ensuite is finished with a marble-topped vanity, Kohler sinks with chrome and gold fixtures, a shower with a glass door and marble flooring.

Pilothouse/flybridge

Accessible from the main deck via both port and starboard, the pilothouse features a single, centrally positioned helm seat from which a staircase ascends to the flybridge. Up top, two STIDD chairs are arranged to face a central navigation console, while removable Isenglass screens encircle the space to offer adaptable protection and visibility. A refined bar area with four stools and an adjoining settee provides an inviting entertainment zone, aft of which a hot tub is gracefully sited. Additional movable chairs can be arranged near the crane used for tender storage, offering flexible seating around the vessel's working areas.

Crew accommodation

Situated just aft of the engine room and reached directly from the swim platform or the aft deck, the crew mess functions as a well-appointed operational center designed to sleep four to five crew members across three separate cabins. The captain's cabin is appointed with a double berth, television, generous drawer and cabinet storage, and a private head complete with shower. Forward, a crew cabin is arranged with three single berths, additional storage and a TV, while an aft crew cabin provides a single berth and its own television; these two crew cabins share a head fitted with a stall shower. Specified for extended service, the crew mess is comprehensively equipped with two sets of washers and dryers, two SPT chest freezers, Corian countertops, an integral sink and a Sub Zero refrigerator.

Disclaimer

The specifications and descriptions provided for this yacht are offered in good faith for informational purposes, yet their accuracy cannot be guaranteed and

no warranty—express or implied—is made regarding the vessel's condition. This yacht is offered subject to prior sale, adjustment of price, or withdrawal from the market without notice. These particulars are presented as a courtesy by the listing broker to its clients and are not intended to constitute a formal or exclusive representation of any specific yacht offered for sale.

CONTACTS

Shestakov Yacht Sales is a brokerage company specializing in the sale and service of yachts worldwide. The company offers services for buying and selling both new and used motor yachts, sailing vessels, and luxury superyachts. They also provide yacht registration, insurance, technical maintenance, crew selection, and charter organization services across the U.S., Canada, Latin America, the Caribbean, and the Bahamas.

The founder and lead broker of the company is Andrey Shestakov, a licensed and certified expert with extensive experience in marine engineering and shipbuilding.

The company has an extensive network of partnerships with major yacht manufacturers worldwide and provides services in multiple languages, including Russian, Ukrainian, Spanish, and English. The office is in Dania Beach, Florida, USA.

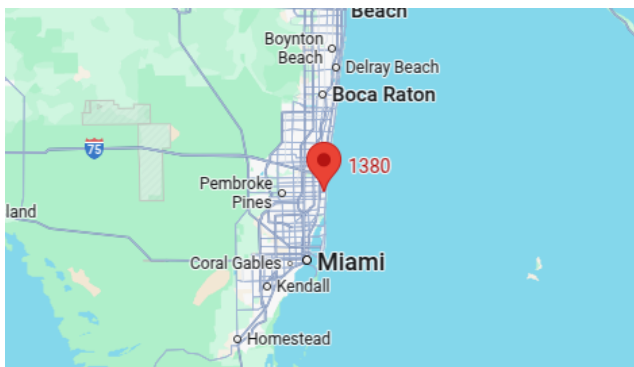
For more information and to view available yachts, you can visit the company's official website: <https://shestakovyachtsales.com>

Contact details

Phone: +1(954)274-4435

Email: andrey@shestakovyachtsales.com

Address



1380 Weeping Willow Way, Hollywood,
Florida 33019