

PRECIOSO - SUNSEEKER



Builder: [Sunseeker](#)

LOA: 112' 0" (34.14 m)

Year Built: 2011

Beam: 24' 0" (7.32 m)

Model: 34 Meter Yacht

Min Draft: 24' 7" (7.50 m)

Price: \$5,300,000 USD Subject to change.

Max Draft: 29' 6" (9 m)

[See full listing on our website](#)

Location: Miami Beach, United States

Cruising Speed: 20 Knots (23.02 MPH)

Max Speed: 30 Knots (34.52 MPH)

TABLE OF CONTENTS

OVERVIEW	3
SPECIFICATIONS	5
Basic Information	5
Dimensions	5
Speed, Capacities and Weight	5
Accommodations	6
Hull and Deck Information	6
Engine Information	6
GALLERY	7
DETAILED DESCRIPTION	20
CONTACTS	24

OVERVIEW

A study in restrained strength and effortless refinement, this 112' Sunseeker, delivered in 2011 and currently lying in the United States, combines athletic performance with the cultivated elegance for which the yard is acclaimed. Equally suited to a brisk coastal dash or a leisurely island-hopping voyage, she presents a finely tuned synthesis of speed, space, and sophistication.

Entering from the aft deck, the emphasis on seamless indoor-outdoor living becomes immediate: an al fresco dining and cocktail area that flows into a luminous salon defined by expansive glass and the tailored finishes of Sunseeker design. Rich materials and contemporary detailing create a welcoming, polished interior where a relaxed lounge coexists with a formal dining area for eight and a handsome bar for entertaining. Attention to craftsmanship is evident throughout, lending warmth and refinement to every social space.

The forward galley is organized to support gracious service, with a convenient day head for guest use. Accommodations are calm and deliberately arranged to sleep up to eight guests, anchored by a sumptuous full-beam owner's suite and complemented by beautifully appointed guest staterooms, each served by elegant en-suite or adjacent facilities; in total there are five luxurious heads. Crew quarters for four, arranged as two cabins with separate access, preserve privacy while enabling attentive service both underway and in port.

Above, the expansive flybridge is the principal arena for open-air living: generous lounges, ample sunpads for relaxed afternoons, and generous circulation space under the sky. Walkaround decks lead fore to a private foredeck ideal for solitary sunning or an intimate aperitif with panoramic views. A broad swim platform provides direct, easy access to the sea for paddleboards, snorkeling, or tender boarding, with plentiful onboard storage for toys to extend every day on the water.

Constructed in composite with a sleek fiberglass monohull, her lines are athletic and purposeful, hinting at the performance beneath. Twin MTU inboard diesel engines propel the yacht to a comfortable 20-knot cruising speed with exhilarating bursts up to 30 knots, while an 8,000-gallon fuel capacity and 1,500 gallons of fresh water support extended cruising. Sound-dampened machinery spaces and considered naval architecture combine to deliver a quiet, composed ride.

Every element reflects Sunseeker's philosophy: tactile, high-quality materials, lighting that flatters morning and evening, and spaces configured to move effortlessly from intimate family retreats to glamorous evening gatherings. Located in the United States and ready for inspection, this 112' Sunseeker offers a rare blend of proven performance and enduring style.

Category keywords: Luxury Motor Yacht, Superyacht, Performance Motor Yacht, Flybridge Yacht, Planing Monohull, Sunseeker, Fiberglass, Diesel, Inboard, Cruising Yacht.

SPECIFICATIONS

Basic Information

Category:
Motor yachts

Year Built:
2011

Model Year:
2011

Country:
United States

Dimensions

LOA:
112' 0" (34.14 m)

Beam:
24' 0" (7.32 m)

Min Draft:
24' 7" (7.50 m)

Max Draft:
29' 6" (9 m)

Speed, Capacities and Weight

Cruise Speed:
20 Knots (23.02 MPH)

Water Capacity:
1500 Gallons

Max Speed:
30 Knots (34.52 MPH)

Fuel Capacity:
8000 Gallons

Gross Tonnage:
220 Pounds

Accommodations

Sleeps:

8

Crew Cabin:

2

Total Heads:

5

Crew Berths:

4

Hull and Deck Information

Hull Material:

Fiberglass and Plastic Yachts

Hull Designer:

Sunseeker

Deck Material:

Fiberglass

Interior Designer:

Sunseeker

Hull Configuration:

Monohull

Engine Information

Engines:

2

Engine Type:

Inboard

Manufacturer:

MTU

Fuel Type:

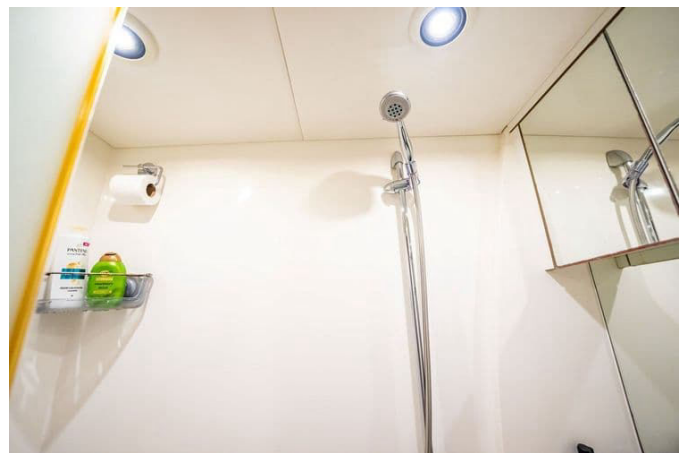
Diesel

GALLERY



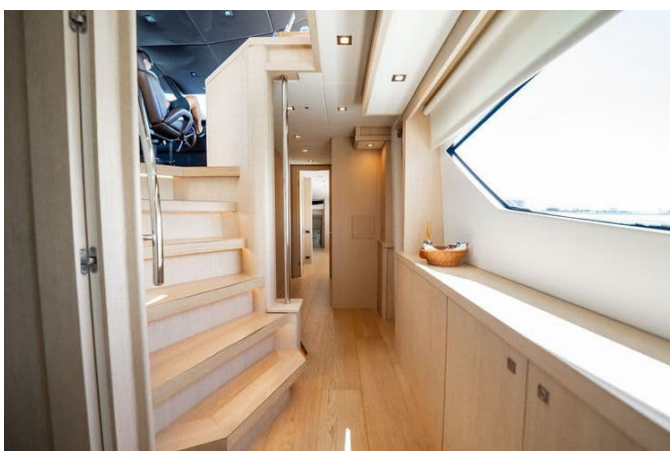








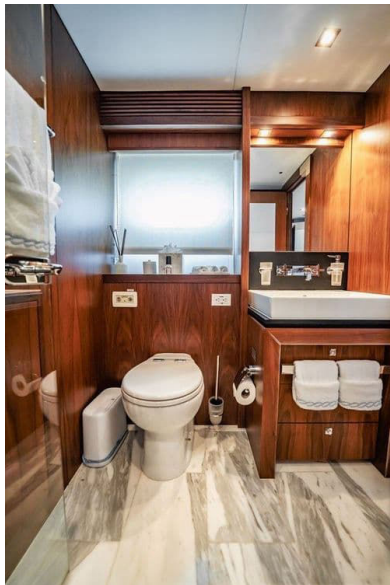


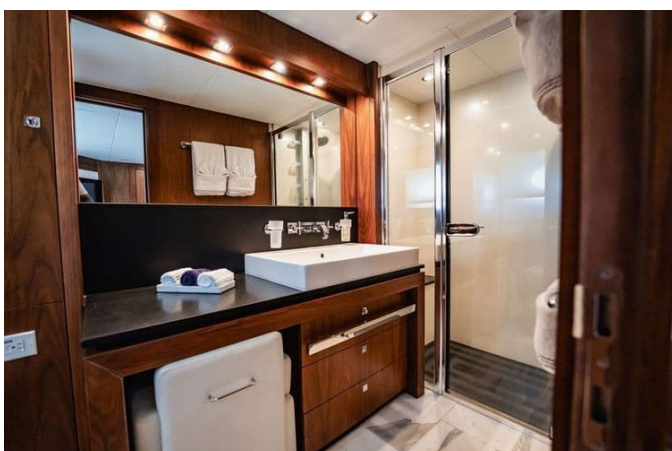
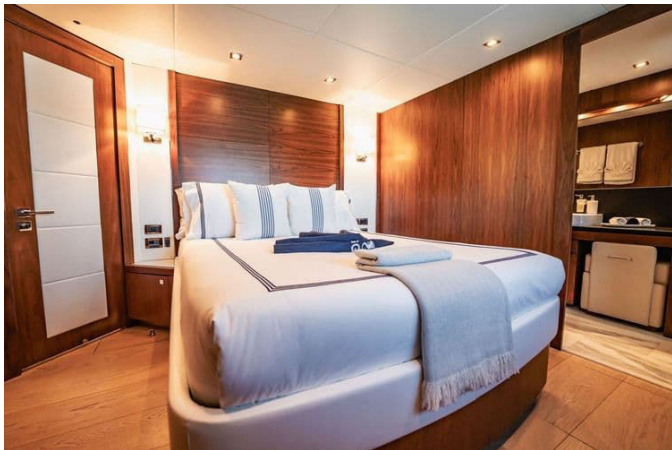














DETAILED DESCRIPTION

2011 Sunseeker 112 yacht

The 2011 Sunseeker 112 Precioso is a commanding synthesis of presence and precision, her striking dark blue hull contrasting with crisp white topsides and deck and built to RINA C classification with hull MACH Y certification to offer unrestricted navigation capabilities. The main deck celebrates flow and light with walk around teak laid side decks that rise toward the foredeck and a transom stern structure that integrates a watertight garage door, while the main salon opens to the aft deck through sliding glass to create a seamless indoor-outdoor expanse. Forward, the galley is efficiently positioned with a crew mess just ahead; described forward on the port side and also set forward of the salon on the starboard side, it is arranged for professional service while keeping guest areas serene. A raised helm station sits forward at the center of the bridge deck, complemented by a fully equipped secondary helm, and the flybridge invites open air living with an upper aft sunpad, a shaded sitting and dining area under the hardtop, a wet bar and an additional starboard side helm. Crew quarters are located forward in the bow with two bunk style berths, a captain's cabin with a double berth and three heads in the crew area, while total onboard sanitation comprises eight heads; accommodations extend to a full beam master with marble floored head and hot tub and a four cabin guest layout featuring port and starboard VIPs aft and twin berth guest cabins forward on both sides with Pullman options, welcoming up to 10 passengers and 5 crew in consummate comfort.

Power and systems aboard Precioso are engineered for reliable performance and control. Propulsion comes from two MTU 16V 2000 M93 engines showing 4600 hours in a straight line configuration with the gearboxes mounted to the engines and served by two separate cooling circuits, while ventilation is

purposeful with three blowers to port and two to starboard and MTU electronic control placing main controls in the wheelhouse and secondary controls at the flybridge station. The running gear includes an electric hydraulic power assisted steering system 380/415 VAC by Hydrive with two pumps, two balanced style rudders and two Rolla NIBAI five blade propellers; hydraulic bow and stern thrusters by ABT TRAC deliver precise low speed authority supported by a pump on the main engines and the starboard generator, and ship's power is assured by two Kohler 65EOZD generators for quiet, reliable autonomy. Ground tackle is specified for confidence at anchor with two hydraulic windlasses by Muir, two stainless steel Pool style anchors at 132 kg each, four cleats at the bow and one Muir hydraulic capstan per side, and safety equipment includes two Revere Regatta life rafts and two Survitec Zodiac life rafts.

Navigation, electronics and guest systems are comprehensive and thoughtfully integrated to serve both passage making and onboard life. The navigation suite includes a chart plotter, three Hatteland 19 inch displays in the wheelhouse and Hatteland displays on the flybridge to port and starboard, AIS via a Furuno FA 50 Class B transponder, Furuno radar, an Airmar DT200 depth transducer, Ritchie compasses at both wheelhouse and flybridge, an Airmar speed log repeated on Hatteland MFD, wind data from a Simrad WX Series weather station sensor and a Tjssen Elektro monitoring system with 15 inch touchscreen displays in the wheelhouse converter room, complemented by CCTV cameras and a Furuno GPS Navigator GP 150. Mechanical and comfort systems include nine underwater lights, an Idromar International water maker with Dometic SpotZero SZ 2000/3000 reverse osmosis polishing, a Besenzoni passerelle, two ABT TRAC stabilizers, a garage Superwinch 400S with 4000 L capacity, a centralized oil change system and an electrically operated sliding sunroof set into the hardtop; exterior canvas and soft goods are fresh and functional, with vinyl white exterior covers on the flybridge, two black sunshade awnings, a white fabric electric sunroof, a sunpad with blue exterior

fabric cushions and white exterior fabric seat and backrest cushions, mirrored by vinyl white covers and matching white fabric cushions on the main deck. Interior appointments are classic Sunseeker elegance, marrying light tones with warm woods and rich detailing. The salon welcomes with white fabric sofas, carpeted flooring, warm wood cabinetry and white leather accents across walls and overheads, while the galley forward on the starboard side is split into a main/guest galley and a dedicated crew galley with an adjacent crew mess to ensure discrete and efficient service. The raised pilothouse features the captain's pilot seat forward at center and is complemented by an electrically operated captain's cabin, with a companion stairway leading to guest cabins finished in soft carpet. The full beam master stateroom forward of the salon, accessed from the starboard lobby, is a private haven with marble floors and countertops, hot tub and shower head, rich wood cabinetry, carpet flooring and electric shades. Alfresco pleasures on the flybridge are delivered by a wet bar with refrigerator and icemaker, a convivial midships sitting and dining area and an upper aft sunpad, while climate control is handled by four modular chillers model MCGX72 3853.

Entertainment and galley fit out reflect a yacht prepared for both high end hospitality and everyday ease. The salon features a Samsung 85 inch TV, a Starlink sat antenna and Apple TV, the master has a Samsung 50 inch TV and Apple TV, guest and crew cabins are fitted with Samsung televisions of varying sizes plus Bose sound systems, DIRECTV receivers and a Sony PlayStation where specified, and the crew mess and cabins include additional Samsung televisions for crew comfort. The professional galley equipment list reads as Sub Zero refrigerator and Sub Zero freezer, a Miele five burner ceramic cooktop, Miele microwave oven and Miele oven, a Miele washer in the engine control room paired with a Whirlpool dryer, a Dometic refrigerator in the master cabin, a Frigidaire wine cellar in the galley, a Miele dishwasher, Miele extractor hood, Miele coffee maker and an Ice-O-Matic icemaker, while the flybridge is served by a U-Line refrigerator/freezer and a Hoshizaki icemaker

and the crew quarters include a Whirlpool dryer and a Bosch washer. Meticulously engineered and beautifully finished, Precioso is a poised and powerful expression of Sunseeker elegance, balancing performance, comfort and design in every mile underway and every moment at anchor.

CONTACTS

Shestakov Yacht Sales is a brokerage company specializing in the sale and service of yachts worldwide. The company offers services for buying and selling both new and used motor yachts, sailing vessels, and luxury superyachts. They also provide yacht registration, insurance, technical maintenance, crew selection, and charter organization services across the U.S., Canada, Latin America, the Caribbean, and the Bahamas.

The founder and lead broker of the company is Andrey Shestakov, a licensed and certified expert with extensive experience in marine engineering and shipbuilding.

The company has an extensive network of partnerships with major yacht manufacturers worldwide and provides services in multiple languages, including Russian, Ukrainian, Spanish, and English. The office is in Dania Beach, Florida, USA.

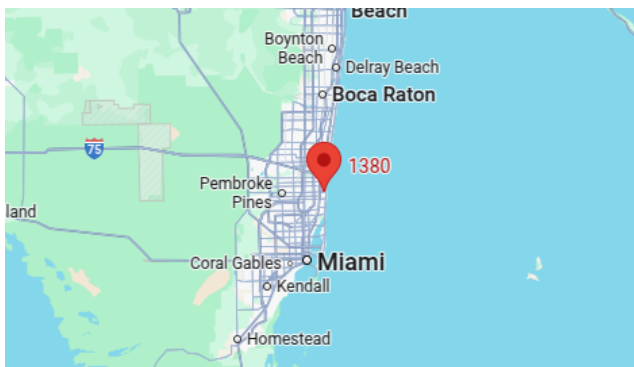
For more information and to view available yachts, you can visit the company's official website: <https://shestakovyachtsales.com>

Contact details

Phone: +1(954)274-4435

Email: andrey@shestakovyachtsales.com

Address



1380 Weeping Willow Way, Hollywood,
Florida 33019