



SHESTAKOV

Yacht Sales

ALBATROSS - BENETTI



Builder: [Benetti](#)

LOA: 115' 0" (35.05 m)

Year Built: 2004

Beam: 25' 0" (7.62 m)

Model: Cockpit

Max Draft: 21' 1" (6.42 m)

Price: \$4,950,000 USD Subject to change.

Cruising Speed: 12 Knots (13.81 MPH)

[See full listing on our website](#)

Location: La Paz, Mexico

Max Speed: 15 Knots (17.26 MPH)

If you would like to buy a yacht **ALBATROSS - BENETTI** or would like help answering any questions concerning purchasing, selling, or chartering a yacht, please call **+1(954)274-4435** or click here on <https://shestakovyachtsales.com>

TABLE OF CONTENTS

OVERVIEW	3
SPECIFICATIONS	4
Basic Information	4
Dimensions	4
Speed, Capacities and Weight	4
Accommodations	5
Hull and Deck Information	5
Engine Information	5
GALLERY	6
DETAILED DESCRIPTION	11
CONTACTS	16

OVERVIEW

ALBATROSS, launched in 2004 by the renowned Italian shipyard Benetti and styled by designer Stefano Righini, presents timeless superyacht pedigree refreshed through comprehensive refits in 2014 and 2017, marrying classic Benetti lines with updated interiors and modern systems for polished blue-water cruising. The light-filled, contemporary décor balances rich wood joinery with soothing neutral fabrics to create an inviting atmosphere throughout her living spaces, while thoughtful upgrades ensure comfort and sophistication at every turn.

She accommodates up to ten guests across five staterooms, featuring a full-beam master suite, two VIP cabins and two double guest staterooms; each cabin is fitted with an entertainment system, television and a private en-suite bathroom. Separate crew quarters sleep up to six, providing discreet, professional service for charter operations. The main salon offers generous, plush seating, meticulous finishings and a fully appointed wet bar, complemented by a formal dining area that comfortably seats ten. Outdoor living is equally refined: a spacious aft terrace is ideal for alfresco moments, a skylounge showcases a leather-clad bar with an onyx countertop, and the expansive sundeck is appointed with a Jacuzzi, sun loungers, a refrigerator and a Bimini top—delivering the signature comfort and conviviality expected of a distinguished Benetti yacht.

SPECIFICATIONS

Basic Information

Model Year:
2004

Country:
Mexico

Year Built:
2004

Dimensions

LOA:
115' 0" (35.05 m)

Max Draft:
21' 1" (6.42 m)

Beam:
25' 0" (7.62 m)

Speed, Capacities and Weight

Cruise Speed:
12 Knots (13.81 MPH)

Water Capacity:
1585 Gallons

Max Speed:
15 Knots (17.26 MPH)

Fuel Capacity:
9246 Gallons

Gross Tonnage:
247 Pounds

Accommodations

Crew Cabin:

3

Hull and Deck Information

Hull Material:

Fiberglass and Plastic Yachts

Hull Designer:

Benetti

Deck Material:

GRP

Interior Designer:

Zuretti Mauro Zanon

Hull Configuration:

Semi-Displacement

Engine Information

Engines:

2

Engine Type:

Inboard

Manufacturer:

MTU

Fuel Type:

Diesel

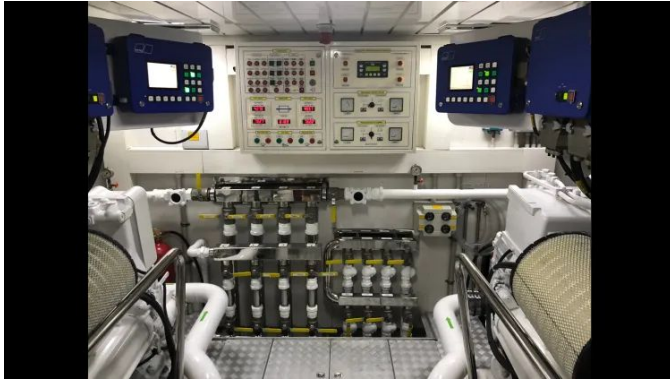
GALLERY











DETAILED DESCRIPTION

Main characteristics

Naval architecture by Benetti, in collaboration with Stefano Righini Design, and elegant interiors by Zuretti together with Mauro Zanon define this 2004-built yacht, whose hull and superstructure are fashioned from GRP and graced with teak decking. Propulsion is provided by two MTU diesel engines of 1,350 HP each, while her volume is expressed by a gross tonnage of 247 tons and a net tonnage of 74 tons. Meticulously refreshed during refits in 2014 and 2017, she accommodates ten guests plus one additional guest across five well-appointed cabins.

Accommodations

The yacht's living spaces have been arranged to marry privacy, comfort and impeccable service. The master cabin is a tranquil retreat featuring a double bed and its own en suite, while two VIP cabins, each outfitted with a double bed and private en suite, offer equally refined quarters. Two twin guest cabins, each benefitting from an en suite, provide convenient and flexible sleeping arrangements for additional guests. Separate crew accommodations ensure discreet, efficient operation and include a captain's cabin with a double bed and en suite, together with two twin crew cabins fitted with bunk beds and individual en suite facilities.

Mechanical equipment

At the core of this yacht's propulsion are twin MTU 12V 2000 M90 engines, each producing 1,350 HP, whose power is transmitted through twin ZF gearboxes to two fixed pitch, five blade screw propellers for assured,

commanding performance. Maneuvering is refined by electronic steering gear from BCS Vosper Koopnautic and is further supported by a Vosper Koopnautic bow thruster together with a stern thruster to ensure precise control at low speeds. The vessel's electrical architecture is a 220V, 50Hz, three phase, insulated three wire system, with hotel services at anchor provided by two Kohler generators rated at 70 kW each (50Hz) and alongside connection via 230V, three phase shore power. Domestic loads are supplied by one bank of 24V DC lead acid service batteries, while climate comfort is delivered by four Marine Air System units, each rated at 72,000 BTU. Auxiliary equipment is similarly high calibre and includes an Atlas Marine System SPA 60F, a Village Marine water maker, a Hamann toilet system, an Alfa Laval MIB 303 fuel centrifuge, and a Sarex VGS2 bilge separator with a capacity of 0.5 m³/h.

Navigation equipment

Confidence on long passages is provided by an integrated navigation suite built around one Furuno SC-50 magnetic compass and one Plath Navigat X MK 1 gyrocompass, both supplying exact heading information to one Plath Navipilot V autopilot for smooth, reliable course-keeping. Depth information is supplied by one Furuno FCV-588 video echo sounder, while situational awareness is amplified by two Furuno radar units—one FR-7112 X-Band marine radar and one 7112—offering clear target definition and important redundancy. AIS functionality is comprehensive, with a SAR 9 AIS complemented by a Furuno Universal AIS SA150 Class A transponder to handle traffic data and vessel identification. Positioning is anchored by one Furuno GP-36 Differential GPS with antenna, and electronic charting is shown on a Navionics LCD 11 chart plotter for sharp, detailed navigation displays. Vital meteorological and navigational bulletins are received through one Furuno NX-500 Navtex, while performance metrics such as speed, distance and wind are supplied to the helm by a B&G Hydra 2000 System that performs both log functions and wind

instrumentation. Night operations are supported by HR1012 searchlights, and onboard surveillance is enhanced by Samsung model SRD-4450N cameras.

Communication equipment

Seamless global connectivity aboard is provided by a satellite communications suite centered on a KVH V3-IP, paired with a Thrane & Thrane F77 terminal. Long range single sideband communications are delivered by a Furuno FS-1562, while VHF traffic is managed by a full duplex Skanti 3000 radiotelephone, complemented by a Lafayette Jonathan VHF radiotelephone reserved for the crew mess. Shoreside mobile access is enabled by a Nokia Premicell GSM gateway, and an integrated intercom/telephone system links the saloon, cabins and wheelhouse to ensure effortless onboard coordination.

Deck equipment

The deck is equipped with twin electric vertical-type anchor windlasses rated at 220V, three-phase and delivering 5,000W each (Muir or equivalent), which handle two galvanized steel HHP (High Holding Power) Sanguinetti anchors on 16 mm chain and are supported by four lengths of galvanized stud-link chain for secure holding and generous scope. On the aft deck, two Muir electric foot-operated capstans offer precise, effortless line handling, while the deck equipment electrical supply is specified at 220V / 3PH / 50Hz, 2,000W. Tender and toy handling is facilitated by an electro-hydraulic crane on the aft upper deck and a further crane on the sundeck. Boarding is seamless via a hydraulic retractable telescopic two-stage gangway measuring 4.5 m and operable by remote control, and a bimini top provides welcome shade both at anchor and underway.

Entertainment equipment

In the main saloon a Sony 34-inch TV with DVD anchors the entertainment offering, complemented by a full-size Sony stereo system that includes a laser CD player, an FM/AM radio tuner and an amplifier, with audio available through the aft deck speakers. The master cabin is fitted with a Sony 20-inch LCD TV with DVD and a compact Sony stereo system, while the VIP cabin is appointed with a Sony 21-inch TV with DVD; the crew mess also features a Sony 21-inch TV with DVD for off-watch relaxation. The upper lounge is served by a compact Sony stereo system with audio routed to the upper deck and sundeck speakers, and both the wheelhouse and galley are equipped with Sony car-type CD stereo systems. Guest cabins and crew cabins are incorporated into this comprehensive entertainment arrangement, and satellite television is supplied by a SeaTel 3294 system.

Security & safety equipment

A full suite of lifesaving and security systems has been thoughtfully installed to ensure guest safety and peace of mind: the vessel carries two life rings, five children's life rings and two additional bridge life rings, each accompanied by life buoys and lighting for enhanced visibility; emergency response equipment includes one breathing apparatus and one fire suit; there are two life rafts, each rated for sixteen persons and fitted with cradles and hydrostatic release mechanisms for immediate deployment; personal flotation is provided by eighteen adult life jackets and five children's life jackets; and onboard protection is completed by a fire alarm system with its control unit positioned in the wheelhouse, a CCTV installation of four cameras, and motion-detection capability monitored across two to three displays.

Disclaimer

The particulars included here have been prepared in good faith and with meticulous care, yet their accuracy cannot be guaranteed and no express or implied warranty is made as to the condition of the vessel. This yacht is offered subject to change and may be sold, re-priced, or removed from the market at any time without prior notice. The information is provided for the convenience of the yacht broker's clients and is not intended to serve as a definitive representation of any individual yacht offered for sale.

CONTACTS

Shestakov Yacht Sales is a brokerage company specializing in the sale and service of yachts worldwide. The company offers services for buying and selling both new and used motor yachts, sailing vessels, and luxury superyachts. They also provide yacht registration, insurance, technical maintenance, crew selection, and charter organization services across the U.S., Canada, Latin America, the Caribbean, and the Bahamas.

The founder and lead broker of the company is Andrey Shestakov, a licensed and certified expert with extensive experience in marine engineering and shipbuilding.

The company has an extensive network of partnerships with major yacht manufacturers worldwide and provides services in multiple languages, including Russian, Ukrainian, Spanish, and English. The office is in Dania Beach, Florida, USA.

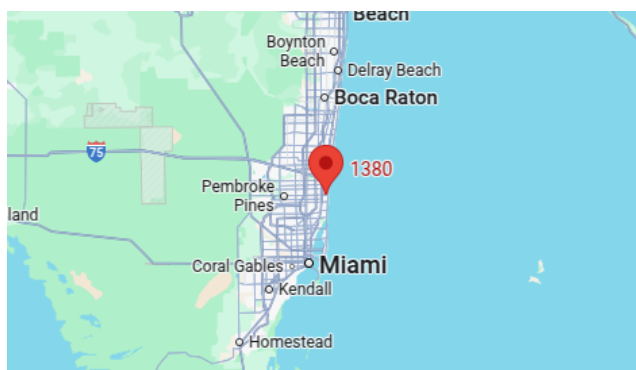
For more information and to view available yachts, you can visit the company's official website: <https://shestakovyachtsales.com>

Contact details

Phone: +1(954)274-4435

Email: andrey@shestakovyachtsales.com

Address



1380 Weeping Willow Way, Hollywood,
Florida 33019