

INSIGNIA - SUNSEEKER



Builder: [Sunseeker](#)

LOA: 115' 0" (35.05 m)

Year Built: 2015

Beam: 24' 0" (7.44 m)

Model: N/A

Cruising Speed: 18 Knots (20.71 MPH)

Price: \$7,500,000 USD Subject to change.

[See full listing on our website](#)

Location: N/A, Spain

Max Speed: 25 Knots (28.77 MPH)

TABLE OF CONTENTS

OVERVIEW	3
SPECIFICATIONS	5
Basic Information	5
Dimensions	5
Speed, Capacities and Weight	5
Accommodations	5
Hull and Deck Information	6
Engine Information	6
GALLERY	7
DETAILED DESCRIPTION	21
CONTACTS	25

OVERVIEW

Savor Unrivaled Luxury Aboard This Exceptional 2015 Motor Yacht

Step onto this magnificent 115 foot motor yacht, a work of refined design and engineering currently moored in the sunlit waters of Spain. Launched in 2015, the vessel artfully marries graceful lines with purposeful performance, offering an elevated retreat for those who seek both exhilarating passages and serene moments afloat.

A broad 24 foot beam creates generous, airy living areas that invite relaxation and elegant entertaining. Inside, the layout has been carefully conceived to balance style and function, and five well appointed heads ensure privacy and convenience for every guest on board. Every space has been arranged to maximize comfort and usability, whether hosting dinner beneath the stars or enjoying a quiet morning at anchor.

Underway, the yacht is driven by two powerful MTU inboard engines that propel her with confident ease, sustaining a comfortable cruising speed of 18 knots and a top speed of 25 knots when the mood calls for swifter travel. With a substantial fuel capacity of 3,724.83 gallons, she is equipped for extended legs without frequent refueling, allowing longer explorations of coastal beauty. Constructed with fiberglass hull and deck components, the yacht delivers durability and a smooth, stable ride, enhancing both safety and pleasure while underway. The expansive exterior decks provide ideal settings for sunbathing, alfresco dining, and soaking in sweeping Mediterranean vistas, turning every stop into a private sanctuary.

As an opportunity within the current boat location market, this yacht presents a compelling choice for discerning buyers seeking to elevate their yachting lifestyle. Whether planning short escapes or lengthy voyages, this 2015 motor yacht blends luxury, space, and performance into a single, irresistible offering. Make this exceptional vessel your gateway to unforgettable adventures on the

water.

SPECIFICATIONS

Basic Information

Category:
Motor yachts

Year Built:
2015

Sub category:
Motor Yacht

Country:
Spain

Model Year:
2015

Dimensions

LOA:
115' 0" (35.05 m)

Beam:
24' 0" (7.44 m)

Speed, Capacities and Weight

Cruise Speed:
18 Knots (20.71 MPH)

Water Capacity:
3724.83 Gallons

Max Speed:
25 Knots (28.77 MPH)

Fuel Capacity:
3724.83 Gallons

Accommodations

Total Heads:
5

Hull and Deck Information

Hull Material:

Fiberglass and Plastic Yachts

Hull Designer:

N/A

Deck Material:

Fiberglass

Interior Designer:

N/A

Hull Configuration:

N/A

Engine Information

Engines:

2

Engine Type:

Inboard

Manufacturer:

MTU

Fuel Type:

Diesel

GALLERY







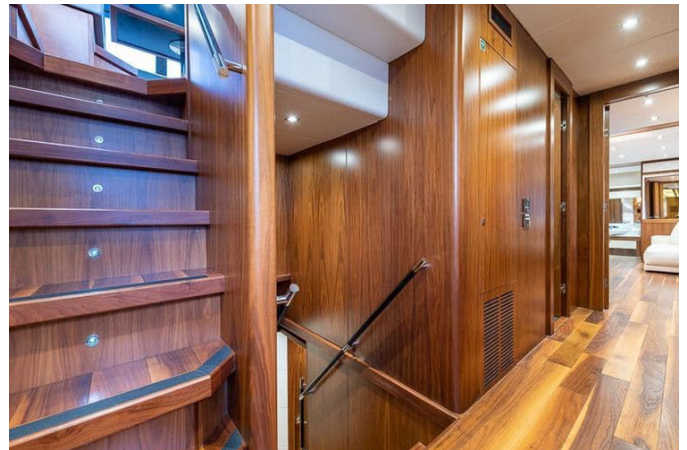


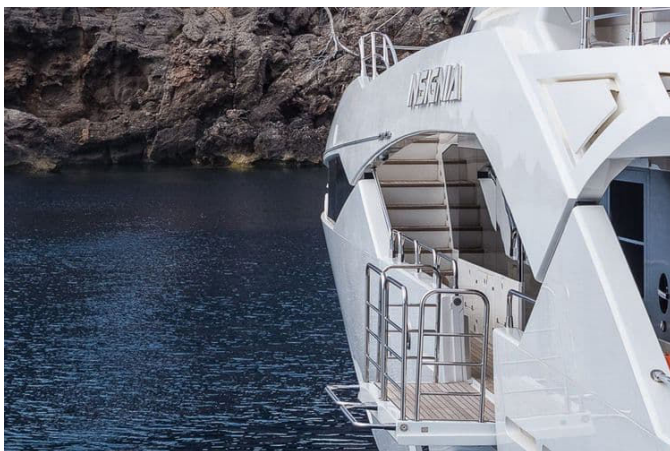








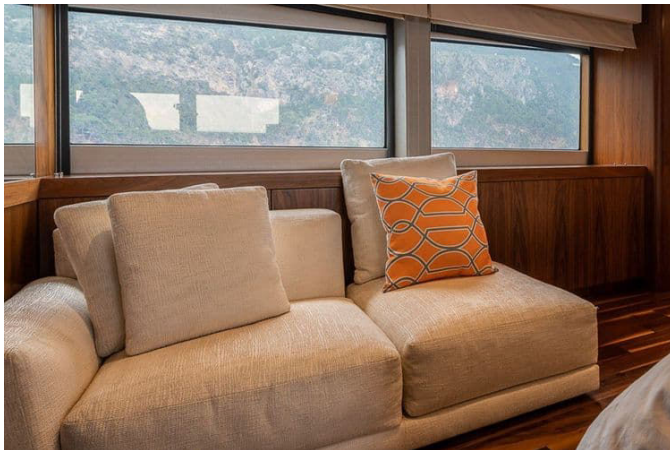












DETAILED DESCRIPTION

Available now!

Delivered in 2015, this yacht represents the final evolution of the acclaimed 115 Sport Yacht line, finished throughout in signature Black American Walnut panelling that imparts warmth and timeless elegance. The open-plan saloon is a showcase of refinement, offering extensive seating, a full wet bar and an entertainment centre upgraded with a sixty-five inch television and a Kramer AV System, while sliding patio doors reveal a pair of port and starboard sea balconies that extend the living space to the water; a formal dining area adjacent to the saloon comfortably accommodates up to 10 guests for memorable onboard dining. The aft cockpit is tailored for alfresco entertaining with built-in bench seating, a dining table and chairs, a full wet bar and an ice maker, while the generous tender garage stores numerous toys and features an upgraded outdoor waterfall shower for the aft beach club. The flybridge delivers commanding leisure and helm functionality with twin helm positions, an upgraded custom bar, an ice maker and an upgraded Jacuzzi surrounded by expansive sunpad areas, seating and dining spaces beneath a retractable hard top. Propulsion comes from twin 2,640 hp MTU diesel engines that propel the yacht to speeds of up to 25 knots, promising a blend of thrilling performance and luxurious, sea-going comfort.

Tenders

The yacht is equipped with a Williams 595 Diesel tender that delivers dependable, efficient performance for transfers and exploration, complemented by a pair of Yamaha wave runners that provide exhilarating speed and agility for watersports and coastal play; together these tenders create a versatile suite of toys that broaden the scope of activities and ensure

every outing is both effortless and exciting.

Generators

The yacht's generators have accumulated 3,100 hours and provide a robust, consistent power supply to support all onboard systems and amenities; this level of usage, coupled with professional maintenance, ensures reliable operation whether at anchor or underway, allowing air conditioning, galley equipment, entertainment systems and hotel services to function smoothly throughout extended cruising.

Layout/interior

INSIGNIA offers luxurious accommodation for up to 10 guests across five beautifully appointed cabins, each fitted with entertainment centres, television screens and ensuite bathroom facilities, with a configuration that includes three fixed double bed cabins and two twin bed guest cabins that feature a sliding berth to convert easily to double beds to suit guest preferences; this adaptable arrangement, together with a cohesive interior theme that creates an exceptional sense of space and comfort, makes the yacht ideal for both private ownership and charter. Crew accommodation is thoughtfully arranged for five crew members, ensuring professional service and attentive running of the vessel.

Additional extras

This yacht is specified with an extensive package of extras that elevate both safety and luxury. She carries RINA private classification and MCA LY3 short range certification, and the Platinum Upgrade Package includes a long-range fuel tank, flybridge teak decking, a GRP hardtop and generator upgrade to two

times 70 kW, while the complete Trac stabiliser system, upgraded bow and stern thrusters, wing station controls, tropical air conditioning and two engine room air handlers contribute to superior seakeeping and comfort. Operational enhancements include quieter air handlers, a full MPA main electrical system with comprehensive MPA controls and monitoring, polished stainless steel anchors, an antifouling upgrade and an auto troll system, together with a tonnage survey certificate, custom refrigeration, a fuel cleaning centrifuge and Miele professional washing machines, dryers and dishwashers. Security and systems integration are extensive, with an MPA CCTV system of four cameras plus an additional four static cameras for a total of eight, MPA Nav Parameters System, SMS paging, swipe card security and monitored exterior access. Interior and hospitality features are exceptional: two balconies on the main deck saloon, a four-brick safe in both the master walk-in wardrobe and the wheelhouse, European double sockets in wardrobes for hairdryer use, and an aft cockpit wet bar with a Hoshizaki IM-21CNE ice machine and a Frigoboat stainless steel drawer fridge. Saloon console tops are Black Galaxy Granite, the master toilet offers a bidet option and the interior uses Cadorn African Wenge brushed natural oiled wood in the saloon, dining and starboard lobby, with day blinds complementing Roman blinds in principal spaces. Practical systems include divertor valves for grey water transfer to black water for deck discharge ashore, a flybridge fitted with a second pair of Besenzoni dual helmseats, a wet bar with a Hoshizaki ice machine and Frigoboat twin drawer fridge units, and a forward dining bulkhead finished with special vertical Opti grey bevelled mirrors with a full-length mirror inside the walk-in wardrobe door. The standard tub is replaced by a hexagonal spa tub with a 6 kW inline water heater and colour-changing underwater LED lights, and the interior wood finish throughout is Black American Walnut in gloss. Entertainment is carefully zoned via a Kramer AV system with zone control to the aft cockpit, sky deck and fore deck, and the saloon TV is upgraded to a sixty-five inch model with Seatel 100TV HD Satellite TV wiring to the saloon, master, all guest cabins

and crew mess, including a feed to the captain's cabin TV. A large 40m yacht wet bar is fitted with three standard bar stools and LED interior lighting, while the lower deck lobby staircase features Black American Walnut gloss nosing and the master cabin headboard displays a diamond panel design with stainless steel infill strips. The master en-suite comprises a Phoenix Dee 1700x800 bath with Phoenix Whirlpool/Airpool System 3 and undermount basins in the vanity, plus a mini bar fridge in the master stateroom. Navigation upgrades include a Furuno Network Sounder, Transas AIS, ARPA and radar integration, an ultrasonic wind system and monitor upgrades for both flybridge and wheelhouse. The port and starboard twin guest cabins feature inboard berths that move outboard to create double berths, a retractable roller canopy shades the aft cockpit and Roman blinds complement Venetian blinds in the four lower deck guest cabins. Additional service and convenience items include an under-counter Subzero fridge drawer unit in the servery and an upgraded Sub Zero IBC424G wine cooler, a shorepower converter with dual input, a short saloon/long aft cockpit layout with a cockpit bar and three bar stools, a stainless steel passerelle and a Strahl beverage set. The garage is fitted with a tender fuelling system and the toy list is comprehensive, including two Cayago F5 SeaBOBs, two SeaDoo Spark three-up Jet Skis, a Williams 595 Diesel tender plus a Williams 505 Diesel Jet Tender, two Cayago F5 SeaBOBs, two SeaDoo Spark three-up Jet Skis, a tender fuelling system and additional windscreen black mesh cover, while wheelhouse helm seats are Besenzoni Infinity P238 with electric operation and crew areas are finished in white and teak, completing a truly exhaustive specification that anticipates every aspect of refined yachting life.

CONTACTS

Shestakov Yacht Sales is a brokerage company specializing in the sale and service of yachts worldwide. The company offers services for buying and selling both new and used motor yachts, sailing vessels, and luxury superyachts. They also provide yacht registration, insurance, technical maintenance, crew selection, and charter organization services across the U.S., Canada, Latin America, the Caribbean, and the Bahamas.

The founder and lead broker of the company is Andrey Shestakov, a licensed and certified expert with extensive experience in marine engineering and shipbuilding.

The company has an extensive network of partnerships with major yacht manufacturers worldwide and provides services in multiple languages, including Russian, Ukrainian, Spanish, and English. The office is in Dania Beach, Florida, USA.

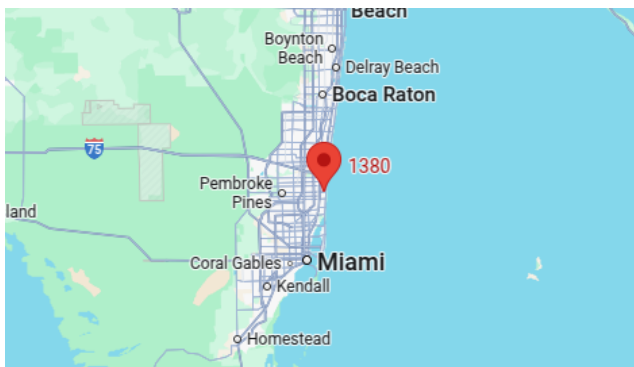
For more information and to view available yachts, you can visit the company's official website: <https://shestakovyachtsales.com>

Contact details

Phone: +1(954)274-4435

Email: andrey@shestakovyachtsales.com

Address



1380 Weeping Willow Way, Hollywood,
Florida 33019