



DREAMS - OCEAN ALEXANDER



Builder: [Ocean Alexander](#)

LOA: 118' 0" (35.97 m)

Year Built: 2021

Beam: 24' 0" (7.47 m)

Model: 37L

Max Draft: 22' 8" (6.92 m)

Price: \$18,399,000 USD Subject to change.

Cruising Speed: 17 Knots (19.56 MPH)

[See full listing on our website](#)

Location: Key Largo, United States

Max Speed: 20 Knots (23.02 MPH)

If you would like to buy a yacht **DREAMS - OCEAN ALEXANDER** or would like help answering any questions concerning purchasing, selling, or chartering a yacht, please call **+1(954)274-4435** or click here on <https://shestakovyachtsales.com>

TABLE OF CONTENTS

OVERVIEW 3

SPECIFICATIONS 5

 Basic Information 5

 Dimensions 5

 Speed, Capacities and Weight 6

 Accommodations 6

 Hull and Deck Information 6

 Engine Information 7

GALLERY 8

DETAILED DESCRIPTION 30

CONTACTS 42

OVERVIEW

Delivered in 2021 as a 2022 model and lying in the United States, this 118-foot composite motor yacht marries clean, contemporary lines with an unmistakable ocean-going presence. A generous 24-foot beam creates expansive social volumes both inside and out, while advanced fiberglass construction and a substantial, sea-kindly hull geometry provide quiet, composed passages and bluewater stability that reward confident offshore cruising.

Twin MTU inboard engines power her with diesel/electric efficiency, carrying the yacht at a comfortable cruise speed of 17 knots and permitting a maximum of 20 knots when conditions or schedule call for it. Long-range passages are supported by 5,500 gallons of fuel and 1,060 gallons of freshwater, and thoughtful systems engineering for reliability, sound attenuation, and refined onboard quietude underpins extended voyages with the assurance of robust mechanical and comfort systems.

On deck the yacht offers a choreography of spaces designed for conviviality and repose. A welcoming foredeck lounge sets the scene for sunset cocktails, while aft decks are configured for relaxed al fresco dining and effortless entertaining. Above, an elevated leisure zone invites sun pads, a bar, and panoramic views to the horizon, and at water level a broad swim platform provides easy access for swimming and tenders, transforming the stern into a natural beach-club ambiance that encourages seamless transitions between sea and yacht.

Interiors unfold in serene, contemporary fashion, where natural light takes center stage through expansive windows. The main salon flows gracefully into a formal dining area, each space articulated with warm woods, fine stone accents, and tactile textiles that lend a residential, refined atmosphere. A professional-grade galley supports gourmet service for both intimate family

meals and curated events, while accommodation is arranged for privacy and comfort with beautifully appointed staterooms and seven refined heads—each finished with attention to storage, detail, and livability. Discreet crew areas and dedicated service routes preserve the guest experience at every turn, reflecting a charter caliber arrangement that balances hospitality and operational efficiency.

Systems and creature comforts are integrated to enhance every passage: efficient climate control, integrated entertainment, and modern navigation and maneuvering technologies complement the yacht's structural and mechanical integrity. All fiberglass decks and a composite hull simplify ownership and maintenance without sacrificing structural robustness or seagoing capability.

Poised between elegance and capability, this 118' motor yacht is equally a tranquil private retreat and a confident bluewater traveler—at home hosting sophisticated gatherings at anchor or making swift, comfortable offshore crossings. Inspections are welcomed in the United States for those seeking a yacht that balances presence, performance, and an elevated onboard life.

Motor Yacht, Superyacht, Luxury Yacht, Composite Yacht, Flybridge Yacht, Raised Pilothouse, Bluewater Cruiser, MTU Powered, Diesel/Electric, Charter Caliber, Contemporary Design

SPECIFICATIONS

Basic Information

Category:
Motor yachts

Year Built:
2021

Sub category:
Motor Yacht

Country:
United States

Model Year:
2022

Dimensions

LOA:
118' 0" (35.97 m)

Max Draft:
22' 8" (6.92 m)

Beam:
24' 0" (7.47 m)

Speed, Capacities and Weight

Cruise Speed:

17 Knots (19.56 MPH)

Water Capacity:

1060 Gallons

Max Speed:

20 Knots (23.02 MPH)

Fuel Capacity:

5500 Gallons

Gross Tonnage:

278 Pounds

Accommodations

Total Heads:

7

Hull and Deck Information

Hull Material:

Fiberglass and Plastic Yachts

Hull Designer:

N/A

Deck Material:

Fiberglass

Interior Designer:

N/A

Hull Configuration:

N/A

Engine Information

Engines:

2

Engine Type:

Inboard

Manufacturer:

MTU

Fuel Type:

Diesel/Electric

GALLERY

















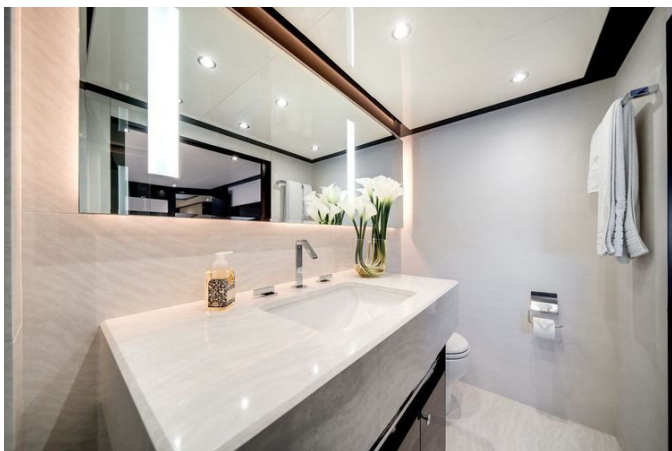














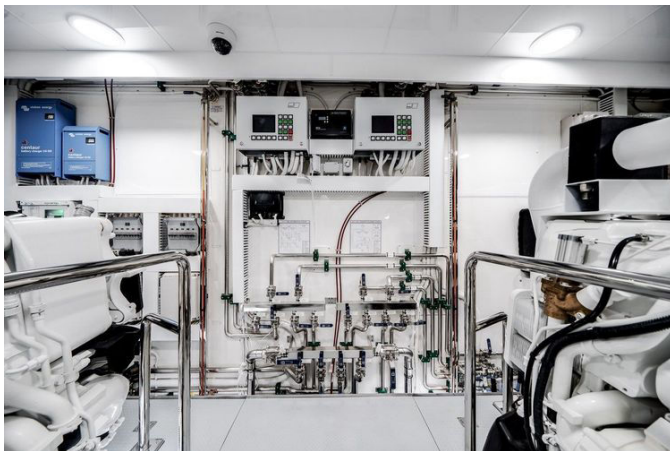


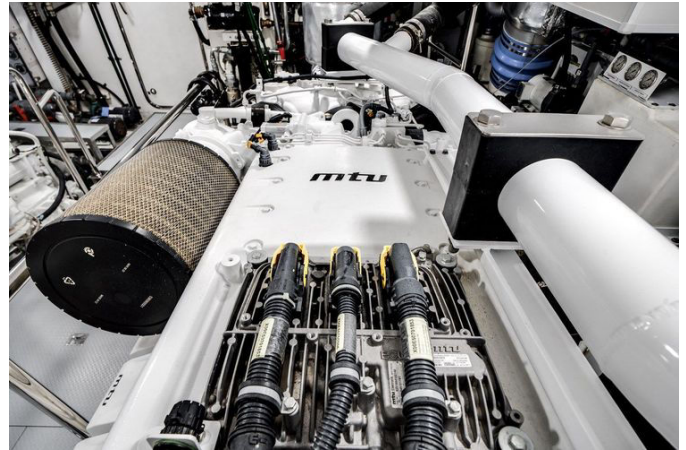












DETAILED DESCRIPTION

Description

"Dreams," a 2022 Ocean Alexander 37L, delivers extraordinary volume, exquisite craftsmanship, and world-class comfort on every deck, with five spacious staterooms each with en-suite heads, crowned by a full-beam, on-deck master featuring breathtaking 180-degree panoramic windows for a private sanctuary that rivals the finest waterfront residences. Purpose-built for both effortless entertaining and extended cruising, she blends expansive indoor and outdoor living with a beach club and fold-down transom, a skylounge complete with a day head, and a sun deck highlighted by a five-person lighted Jacuzzi and a custom sun pad; multiple alfresco lounges, formal dining for ten, and a fully equipped gourmet galley elevate life aboard to a true superyacht standard. Technical sophistication abounds with an Atlas Marine System 50/60 Hz power converter, dual Starlink connectivity for global high-speed internet, and a Spot Zero water purification solution integrated with the water makers, ensuring seamless operations and modern comfort. Twin MTU 2600 hp V16 engines and twin Kohler 55 kW generators, paired with advanced Zero Speed stabilization, deliver assured performance and long-range capability. With exceptional crew accommodations, extensive storage, and premium finishes throughout, "Dreams" presents a rare, turnkey opportunity for discerning owners who demand space, sophistication, and uncompromising quality.

Recent services

Engines and generators received comprehensive service in July 2025, alongside the Side Power Zero Speed stabilizers and thrusters and the bow and stern thruster gear leg maintenance; the annual haul out in July 2025 included

attention to props and shafts with zincs replaced. A fresh bottom job was completed in June 2025, and the Atlas system underwent its annual service in April 2025, ensuring every critical system is current and cruise ready.

Warranty

Extended MTU warranty is in place until February 2027, providing added peace of mind for the heart of the yacht's performance.

Highlights

Five staterooms with en-suite heads anchor a truly superyacht layout, highlighted by an on-deck master stateroom with sweeping 180 degree windows; propulsion comes from twin MTU V16 engines rated at 2600 hp with 1025 hours, complemented by a plug in wired MTU engine remote and twin Kohler 55 kW generators showing 1720 hours. Precision handling is assured by hydraulic bow and stern thrusters and advanced Zero Speed stabilization, while global flexibility arrives via the Atlas Marine System 50/60 Hz power converter. Long range autonomy is enhanced by two Dometic 1,800 GPD water makers with Spot Zero, and onboard entertainment is orchestrated by a Control 4 AV system, supported by one Starlink and one High Performance Starlink. Lifestyle luxuries abound with a skylounge featuring a day head, a fold out bulwark balcony for portside dining, a five person lighted Jacuzzi with a custom sun pad on the sundeck, a beach club with a flip down transom door, and seven LED underwater lights that turn evenings at anchor into a spectacle.

Exterior

One Starlink and one High Performance Starlink crown a sophisticated

communications suite above a Garmin 25 kW open array radar, while thrusters deliver 58 hp at the bow and 42 hp at the stern for precise close quarters control. Entertainment and navigation are further supported by KVH TracVision UHD7 satellite TV domes, and heavy duty utility is assured with a 3,000 lbs. crane on the bridge deck and aft deck transom structural reinforcement for towing. Practical excellence spans a hands free anchor chain wash system and two hydraulic 350 lbs. anchors with 250' chain, a Buell heavy duty three trumpet horn, two stainless steel flagpoles at bow and stern, seven white LED underwater lights, flush mounted deck lights, and a dedicated lightning protection system. Visibility and security are enhanced by three marine cameras on the aft deck, while custom canvas covers protect all exterior cabinetry across the aft deck, bridge deck, and bow. Movement is effortless along oversized teak walkaround side decks, with a portside crew quarters access door, and the Alexaseal off white painted exterior complements the semi displacement hull with timeless elegance.

Beach Club

A flip down transom opens the beach club to the sea, revealing an inviting L shaped settee opposite a cabinet style wet bar with refrigerator and ice maker; dedicated air conditioning, a 40" TV, and a teak deck complete a waterside lounge that is as practical as it is indulgent.

Aft deck

Elevated C shaped seating with split tables to each side frames a convivial space served by a stone topped wet bar with sink, refrigerator, and icemaker, all beneath a custom ceiling feature with indirect lighting and a dimmer for the main lights. Safety and convenience meet in stainless steel transom gates for pet and child protection, side boarding gates, and a Marquipt boarding ladder

set into the recessed starboard gunnel with teak, while custom canvas covers preserve finishes when off duty. Two 1700 W, 24 VDC motor capstans with foot switches, a transom reinforced for towing a 20,000 lbs tender, compressed air, a plug in wired MTU engine remote, searchlight and spreader lights, a flip down 40" TV, and a teak deck ensure this is a working and entertaining cockpit in perfect balance.

Salon

A custom L shaped sofa to port pairs with a bespoke coffee table, while two armchairs and a starboard stone topped wet bar with refrigerator and ice maker round out a refined gathering space; electric shades with remote control, a dimmer for the main ceiling lights, and a full height electric sliding door with toe kick remote opening set the tone for effortless living, as an LED 55" TV anchors movie nights in style.

Dining

A beautifully crafted room divider cabinet organizes flatware, dinner service, and glassware, complete with OA flatware and dinner china for a set of ten and OA water, white, red, and champagne glasses for a set of ten. The custom dining table seats ten in comfort, supported by a wet bar with sink, a KitchenAid drawer refrigerator/ice maker and a Sub Zero wine cooler below, beneath a sophisticated coffered ceiling; full height electric glass sliding doors to port and starboard, electric shades with remote, a dimmer for the main lights, and a fold out bulwark balcony to port make this a space for both grand occasions and breezy alfresco moments.

Day head - main deck

The main deck day head is finished with stone countertops and a vanity with sink and storage shelf below, complemented by a mirror, a Tecma toilet, and an exhaust fan for freshness at any hour.

Galley

Discreet storage cabinetry with hidden hinges frames a chef's workspace of stone countertops and backsplash, illuminated by a large portside window and anchored by a Franke stainless steel sink beneath a Vent-A-Hood above a Wolf 36" induction cooktop. Culinary firepower continues with a Wolf 30" electric oven and a Wolf 30" electric steam oven, a Sub-Zero 36" built-in refrigerator/freezer plus a separate Sub-Zero 36" built-in freezer, a Whirlpool trash compactor, a Wolf microwave with trim kit, an ASKO dishwasher, and a Whirlpool garbage disposal; a portside provisioning door makes stocking effortless.

Master stateroom - on deck

The on-deck master stateroom centers on a king-size bed dressed with two sets of OA bed linens, flanked by two nightstands with stone countertops and joined by a vanity table with stool and a cushioned settee. Immersive 180-degree windows, dimmable main ceiling lights, electric shades with remote control, and an LED 50" TV complete a serene, light-filled retreat.

Master en suite head

A custom large shower and heated floors headline the master's spa, with a separated TOTO toilet for privacy and stone countertops across two vanities

with sinks and storage shelves below; lighted mirrors, exhaust fans, three dedicated closet areas, and a hidden safe for valuables in the closet ensure every detail is both indulgent and secure.

Lower companionway/walk-in storage area

At the foot of the companionway, a KitchenAid drawer refrigerator/ice maker nestles under counter beside the entry to a forward walk in storage area, where a commercial grade washer and dryer, a full height freezer and sink, and an array of storage shelves and cabinets keep extended cruise logistics perfectly organized.

Port VIP stateroom

The port VIP offers a queen size bed with storage drawers and two sets of OA bed linens, framed by two nightstands, a vanity/dressing table, and a lighted hanging locker; a large window with in glass portlight, electric shades with remote, dimmable main ceiling lights, and an LED 50" TV create a private haven with generous natural light.

Port VIP en-suite head

Finished with stone countertops and a vanity with sink and storage shelf below, the en suite adds a mirror, a shower, a Tecma toilet, and an exhaust fan for fresh, private comfort.

Starboard VIP stateroom

Across the hall, the starboard VIP mirrors the luxury with a queen size bed with storage drawers, two sets of OA bed linens, two nightstands, a vanity/dressing table, and a lighted hanging locker; a large window with

in glass portlight, electric shades with remote control, dimmable main ceiling lights, and an LED 50" TV complete the suite.

Starboard VIP en-suite head

The starboard VIP en suite features a vanity with sink and storage shelf below, a mirror, a shower, a Tecma toilet, and an exhaust fan, blending crisp finishes with quiet functionality.

Port guest stateroom

Flexible accommodations arrive with two twin size beds convertible to a queen, supported by two sets of OA bed linens, a nightstand with drawers, and a lighted hanging locker; a large window with in glass portlight, electric shades with remote control, and an LED 32" TV make this an inviting retreat.

Port guest en-suite head

Stone countertops and a vanity with sink and storage shelf below meet a mirror, shower, Tecma toilet, and exhaust fan for a complete guest bath.

Starboard guest stateroom

The starboard guest stateroom mirrors the versatility with two twin size beds convertible to a queen, two sets of OA bed linens, a nightstand with drawers, a lighted hanging locker, a large window with in glass portlight, electric shades with remote, and an LED 32" TV.

Starboard guest en-suite head

Crisp and complete, the en suite offers stone countertops, a vanity with sink

and storage shelf below, a mirror, a shower, a Tecma toilet, and an exhaust fan.

Helm

Command is effortless from three 32" Garmin 8700 Series Black Box touch screens supported by a Garmin GRID remote input device on the helm chair and a Garmin 25 kW open array radar; a Simrad autopilot, Garmin VHF and card reader, Garmin Blackbox sounder, and Garmin AIS with NMEA GPS round out a professional navigation suite. Situational awareness is superb with three marine cameras on the aft deck and two in the engine room displayed on the Garmin screens, while the Octoplex electrical safety/security control system manages all AC and DC breakers. Controls for SidePower Zero Speed stabilizers and the hydraulic bow and stern thrusters are at hand, as are entertainment and communication via a KVH TracVision UHD7 satellite TV antenna. A Ritchie 5" compass, heavy duty commercial grade pantograph windshield wiper and washer, and a red light for nighttime running reflect true seagoing intent, while three leather custom helm chairs with diamond stitching and OA logo, a captain's desk with chair, a full height storage locker, and Portuguese bridge access doors to port and starboard underscore comfort and practicality.

Portuguese bridge

Positioned directly forward of the helm, the Portuguese bridge offers a full walkaround with access doors to port and starboard, forward seating in front of the helm, and additional seating to port and starboard for relaxed passages in any condition.

Skylounge

Electric shades with remote control, a full height electric sliding door with toe kick remote opening, and a custom couch with coffee table establish a refined lounge, joined by two armchairs and a card table with chairs; a KitchenAid drawer refrigerator/ice maker under counter, a dimmer for the main ceiling lights, and an LED 65" TV make this an elevated private club at sea.

Skylounge day head

A polished sanctuary with stone countertops, a vanity with sink and storage shelf below, a mirror, a Tecma toilet, and an exhaust fan, the skylounge day head is ready for effortless hosting.

Bridge deck

Beneath the protective overhang of the sundeck to port, four exterior stainless steel stools face a stone topped wet bar with sink, refrigerator, and icemaker, alongside a 32" Electric Chef electric barbecue; custom glass windscreens on both sides tame the breeze. To starboard, a C shaped seating area with table and a flip down 40" TV (also under the sundeck) set the stage for open air dining, all managed by a dimmer for the main lights. Three lounge chairs, a plug in wired MTU engine remote, a 3,000 lbs. crane aft, searchlight and spreader lights, and a teak deck underscore capability, while a sixteen person life raft, sea water and compressed air supply with a 110 V outlet for an inflatable slide or water toys, fresh water washdown, custom canvas covers, and removable stainless steel poles with sunshade add safety, utility, and comfort.

Sundeck

A stone topped wet bar with sink, refrigerator, and icemaker serves a convivial C shaped seating area with a large table, while a five person lighted Jacuzzi with custom sun pad becomes the centerpiece of sun soaked afternoons; a 27 kW commercial water heater keeps the spa ready on demand. A dimmer for the main ceiling lights, custom canvas covers, an LED 50" TV, and a teak deck complete this private rooftop resort.

Bow

Forward, a C shaped seating area with table invites sunrise coffees beneath two concealed pop up lights and a removable sunshade on stainless steel poles, all protected by custom canvas covers when not in use. Dual hydraulic anchor windlasses with remote foot switches, a hands free anchor chain wash system, and a fresh water washdown affirm purposeful seamanship at the sharp end.

AV

A fully integrated Control 4 system orchestrates entertainment and connectivity, backed by one Starlink and one High Performance Starlink for robust bandwidth underway. Visibility and monitoring benefit from three marine cameras on the aft deck and two in the engine room, while KVH TracVision UHD7 satellite TV domes and Direct TV broaden content horizons. Screens abound: salon LED 55", master stateroom LED 50", sky lounge LED 65", VIP stateroom LED 50", guest stateroom LED 32", crew LED 32", captain's LED 32", aft bridge deck flip down 40", aft deck flip down 40", Sky Deck LED 50", and beach club 40", ensuring every space is entertainment ready.

Engine room

Power comes from twin MTU V16 engines at 2600 hp with 1025 hours, supported by twin Kohler 55 kW generators with 1720 hours and a Dometic chilled water air conditioning system, with dedicated engine room air conditioning to keep systems cool and crew comfortable. Serviceability and endurance are built in with a lube oil change system for engines and generators with a 120 gallon lube tank, marine grade aluminum fuel tanks with sight gauges, an Oberdorfer fuel transfer pump, and a Gulfcoast fuel polishing system; compressed air and a Headhunter fresh water system pair with a Headhunter 600 GPD sewage treatment system. Fresh water autonomy is furthered by a Dometic 1,800 GPD water maker with Spot Zero and two 50 gallon hot water heaters, while oversight is enhanced by two marine cameras and Delta T intake/exhaust fans with variable frequency drives and moisture eliminators. Steering confidence flows from a Twin Disk hydraulic system, and safety is safeguarded by a Fireboy fire extinguisher system. Global shore power compatibility and capacity are delivered by an Atlas Marine System 50/60 Hz power converter and two 100 amp Cable Masters with 120' cords. For extended cruising, redundancy is unmatched: a second A/C seawater pump, second A/C circulation pump, second freshwater pump, second treatment system, and a second water maker stand ready to go the extra mile.

Crew quarters

Thoughtfully arranged for professional service, the crew area features a captain's cabin with private head, two Hi Lo bunk cabins, and a second head with shower. A smart kitchenette with sink, microwave, and refrigerator supports quick meals, while a settee table with storage beneath and a second set of commercial grade washer and dryer streamline life between watches. A

dedicated stainless steel workbench with vice, a Snap on tool chest, and ample storage underline capability, with a portside access door for discreet movement and an Octoplex touch screen electrical safety/security control system managing all AC and DC breakers.

CONTACTS

Shestakov Yacht Sales is a brokerage company specializing in the sale and service of yachts worldwide. The company offers services for buying and selling both new and used motor yachts, sailing vessels, and luxury superyachts. They also provide yacht registration, insurance, technical maintenance, crew selection, and charter organization services across the U.S., Canada, Latin America, the Caribbean, and the Bahamas.

The founder and lead broker of the company is Andrey Shestakov, a licensed and certified expert with extensive experience in marine engineering and shipbuilding.

The company has an extensive network of partnerships with major yacht manufacturers worldwide and provides services in multiple languages, including Russian, Ukrainian, Spanish, and English. The office is in Dania Beach, Florida, USA.

For more information and to view available yachts, you can visit the company's official website: <https://shestakovyachtsales.com>

Contact details

Phone: +1(954)274-4435

Email: andrey@shestakovyachtsales.com

Address



1380 Weeping Willow Way, Hollywood,
Florida 33019