



SHESTAKOV

Yacht Sales

MAMMA MIA - BENETTI



Builder: [Benetti](#)

LOA: 120' 0" (36.58 m)

Year Built: 2007

Beam: 25' 0" (7.85 m)

Model: CLASSIC

Min Draft: 21' 1" (6.42 m)

Price: \$5,495,000 USD Subject to change.

Max Draft: 21' 1" (6.42 m)

[See full listing on our website](#)

Location: Fort Lauderdale, United States

Cruising Speed: 13 Knots (14.96 MPH)

Max Speed: 16 Knots (18.41 MPH)

If you would like to buy a yacht **MAMMA MIA - BENETTI** or would like help answering any questions concerning purchasing, selling, or chartering a yacht, please call **+1(954)274-4435** or click here on <https://shestakovyachtsales.com>

TABLE OF CONTENTS

OVERVIEW	3
SPECIFICATIONS	4
Basic Information	4
Dimensions	4
Speed, Capacities and Weight	4
Accommodations	5
Hull and Deck Information	5
Engine Information	5
GALLERY	6
DETAILED DESCRIPTION	15
CONTACTS	24

OVERVIEW

Launched in 2007 by Benetti, the Classic 120 superyacht, christened Mamma Mia, exemplifies refined luxury and timeless design; trade-in offers are welcomed and bespoke on-site financing can be arranged for qualified buyers.

SPECIFICATIONS

Basic Information

Model Year:
2007

Country:
United States

Year Built:
2007

Dimensions

LOA:
120' 0" (36.58 m)

Beam:
25' 0" (7.85 m)

Min Draft:
21' 1" (6.42 m)

Max Draft:
21' 1" (6.42 m)

Speed, Capacities and Weight

Cruise Speed:
13 Knots (14.96 MPH)

Water Capacity:
2180 Gallons

Max Speed:
16 Knots (18.41 MPH)

Fuel Capacity:
11777 Gallons

Gross Tonnage:
299 Pounds

Accommodations

Total Heads:

5

Crew Cabin:

4

Hull and Deck Information

Hull Material:

Fiberglass and Plastic Yachts

Hull Designer:

N/A

Deck Material:

Fiberglass

Interior Designer:

N/A

Hull Configuration:

N/A

Engine Information

Engines:

2

Engine Type:

Inboard

Manufacturer:

MTU

Fuel Type:

Diesel

GALLERY



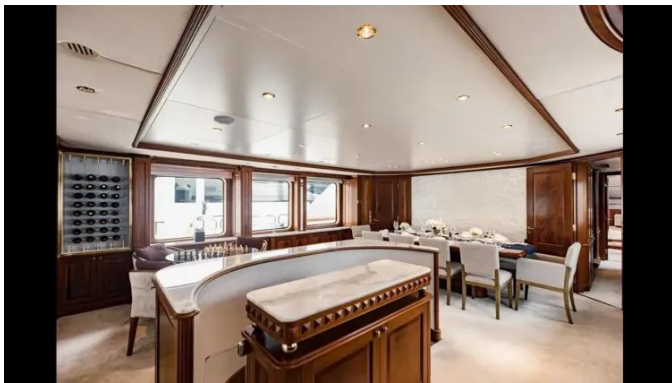
















DETAILED DESCRIPTION

Description

MAMMA MIA, hull number 106 of the celebrated Benetti Classic 120 series, was built to ABS and MCA standards and delivered in 2007, representing a refined combination of timeless Italian styling and a proven charter pedigree, enhanced by substantial recent investment that positions her as an outstanding offering in today's market. She comfortably sleeps up to twelve guests across five exquisitely appointed staterooms, anchored by a full-beam Owner's Suite located forward on the main deck that captures sweeping panoramic views while providing abundant storage, a walk-in wardrobe and a gracious marble-clad ensuite. Four further guest staterooms on the lower deck each feature private ensuites and carefully chosen finishes to ensure comfort and privacy for all aboard. Outdoor living is a hallmark of her design: the generous aft deck sets the stage for refined alfresco dining, the bridge deck offers an additional lounge area seamlessly connected to the skylounge, and the expansive sundeck above is laid out for day-to-night enjoyment with a full-service bar, Jacuzzi, sun loungers and multiple seating areas arranged to savor broad ocean vistas. MAMMA MIA's charter history is strong and consistent; since January 2026 she has completed six charters with three more confirmed for the remainder of the year, presenting a turnkey platform for an owner seeking both personal use and revenue generation. An extensive interior refit in 2021 costing approximately \$1.2 million refreshed soft goods, updated furnishings, rejuvenated interior and exterior spaces and introduced upgraded fabrics throughout, and since acquisition in 2023 the current ownership has continued that investment approach, committing in excess of \$1.5 million toward mechanical improvements, system upgrades and preventative maintenance. The 2024–2025 program of works reflects a

thorough maintenance regimen: a complete yard period included comprehensive bottom service with shafts aligned and propellers balanced; Naiad Zero Speed stabilizers received full servicing; exterior teak was restored, re-caulked and refinished; a new chilled water AC system with air handlers was installed yachtwide and all AC ducting underwent full cleaning and sanitation complemented by new ionizing air purification systems. The galley was fitted with new appliances and upgraded refrigeration, crew accommodation was fully refitted, and connectivity and entertainment were elevated with a new Starlink internet installation and refreshed audio/video systems throughout the yacht; Benetti-supplied windshields were installed in both the master suite and the bridge, the Jacuzzi was completely rebuilt and refurbished, and the watermaker was overhauled and serviced. Major electrical and mechanical services include completion of the ASEA shore power converter five-year service, overhaul of the windlass and anchoring systems, steering system upgrades with new steering modules, a full MTU engine overhaul at 4,600 hours followed by a recently completed 2,000-hour MTU service, and installation of new exhaust blanket insulation. On the generator side the starboard 80kW unit was fully rebuilt in 2024 and the port 80kW overhaul was scheduled and completed in 2025, power management has been upgraded, and the exterior hull and superstructure have undergone a multi-stage polish with stages completed or scheduled. Offered fully operational and ready for her next owner, MAMMA MIA welcomes trade considerations and in-house financing is available; please note she is not offered for sale to U.S. residents while in U.S. waters.

Highlights

As hull number 106 of Benetti's celebrated Classic 120 Series, this yacht is built to ABS and MCA classification standards and arrives fully turnkey following recent major mechanical service work. The interior accommodates up to 12

guests across five staterooms, anchored by a main deck Owner's Suite with panoramic forward views, while the expansive sundeck offers a Jacuzzi, bar, lounge seating and generous sunpads for effortless entertaining and relaxation. A reliable charter platform with a strong revenue pedigree, she has completed six successful charters since January 2026 and already holds three additional bookings for 2026. An extensive \$1.2M interior refit was completed in 2021, and more than \$1.5M has been spent on upgrades and maintenance since 2023, underscoring meticulous care. Onboard comfort and seakeeping are elevated by Naiad Zero Speed Stabilizers, and propulsion is provided by twin MTU 12V2000 M91 engines.

Engines and generator

Propulsion is entrusted to twin MTU 12V 2000 M91 engines, which currently register 6,900 hours; a complete overhaul was performed at 4,600 hours and the scheduled 2,000-hour service was most recently carried out at 6,732 hours. New exhaust blanket insulation has been fitted to enhance thermal protection. Electrical generation is provided by twin Kohler (John Deere) 80 kW generators, with the starboard unit fully overhauled in October 2024 and the port unit fully overhauled in October 2025, all managed by an upgraded power management system.

Accommodations

MAMMA MIA welcomes up to twelve guests across five exquisitely appointed staterooms. The full-beam Owner's Suite, positioned forward on the main deck, presents a king-size berth, a walk-in wardrobe, generous storage and a luxurious marble ensuite bathroom. Below, the lower deck houses four guest cabins arranged as two VIP suites with king-size berths, a guest stateroom with a queen berth plus a Pullman and a twin stateroom with Pullman

accommodations, each guest cabin enjoying its own private ensuite. Thoughtful details include four onboard safes located in the Master Suite and in each VIP stateroom, while the main foyer is finished in marble and the Skylounge features elegant wood flooring.

Guest accommodations

Located forward on the main deck, the Master Suite presents a king-size berth, an ensuite marble bathroom and a generous walk-in wardrobe, while on the lower deck amidships a pair of mirror-image VIP suites on port and starboard each offer a king-size berth and a private ensuite bathroom. Aft on the starboard side a guest stateroom provides a queen-size berth plus a Pullman and its own ensuite bathroom, and the port aft guest stateroom features twin berths with an additional Pullman and a dedicated ensuite bathroom.

Crew accommodations

Positioned forward on the lower deck and reached via a separate crew entrance, the dedicated crew quarters feature a Captain's cabin with a queen-sized berth, a Chief Engineer's cabin also fitted with a queen-sized berth, and two additional crew cabins appointed with over-and-under berths alongside Pullman-style berths.

Exterior living

The generous sundeck, conceived for seamless hosting and sublime relaxation, combines a Jacuzzi with a barbecue, a bar refrigerator, a private shower, expansive sun lounges, rich teak decking and optional shade coverage to form a resort-style sanctuary on the water. Aft, the main deck continues the outdoor indulgence with a spacious alfresco dining area, ideally suited to open-air

meals and lively social gatherings.

Galley & laundry equipment

The yacht's professional galley is meticulously appointed around a Miele six-burner range and a Miele commercial electric oven, with extraction handled by a dedicated Miele exhaust hood to ensure a pristine galley environment. Post-service cleanup is simplified by a Miele dishwasher alongside an Alpes double stainless-steel sink equipped with an ISE garbage disposal, while cold storage needs are met by a Frigrit refrigerator/freezer. Service between decks is effortless thanks to a dumbwaiter feeding the upper deck, and onboard entertaining is elevated with mini refrigerators and icemakers installed in both the main deck and upper deck bars. Laundry requirements are covered behind the scenes by two Miele commercial washers and two Miele commercial dryers, delivering professional-level efficiency.

Entertainment systems

Entertainment aboard is delivered with cinematic clarity: the owner's suite and main salon are each fitted with 50-inch Samsung Smart TVs, and every guest stateroom is likewise appointed with a Samsung Smart TV. A refined audio atmosphere is created by Sony sound systems distributed throughout the guest accommodations, while the skylounge is enhanced by a dedicated Sony Hi-Fi entertainment system for an elevated listening experience. The crew mess is also equipped with a Samsung TV, and vessel-wide television reception and global connectivity are assured by a SAT TV antenna system paired with a FleetBroadband communications antenna.

Communication

The yacht is equipped with a thoroughly appointed communications suite designed to deliver reliable connectivity wherever you cruise. Primary voice channels comprise a Sailor C4900 VHF and a Sailor RT5022 VHF with DSC functionality, supported by a Skanti VHF and a Sailor MF/HF/DSC system to ensure long range clarity. Four Standard Horizon HX370E handheld VHF's provide portable convenience for crew and guests. Navigation and marine information are handled by a Furuno NX-700 Navtex alongside a Furuno GP320B GPS and a Cetrek C-Net 2000 GPS. Global satellite and voice/data reach are supplied by a Sailor TT3020-C Satcom terminal and an Iridium IsatPhone Pro, while onboard calling is streamlined through an integrated GSM/GPRS phone and intercom arrangement together with a PABX business telephone system. Satellite television and dedicated telephone antennas complete the suite, ensuring both entertainment and communications are fully catered for.

Navigation equipment

The helm is appointed with a full complement of high-precision navigation electronics. Leading the suite is the Furuno FR7112 radar, delivering crisp situational awareness, and it is supported by a Plath Navigat X MK I gyro compass alongside a Plath Jupiter magnetic compass to ensure steadfast heading reference. Course-keeping duties are entrusted to the Plath Navipilot V autopilot, while detailed seabed imagery is provided by the Furuno FCV611 video sounder. Accurate position fixes are supplied by the Furuno GP36 GPS, with the Furuno NX5000 Navtex ensuring reliable reception of weather and safety broadcasts. A Dell navigation PC running Transas software offers advanced electronic charting and route-planning capability, and the B&G Hydra 2000 system log records speed and performance with exacting

precision. Immediate feedback at the helm comes from the rudder angle indicator, with a take-over steering system available for instant manual control. Completing the bridge ambience, a Barigo clock, barometer and thermometer set provides timeless, at-a-glance timekeeping and meteorological reference.

Electrical system

Specifically crafted to support extended independent operation, the yacht's electrical architecture centers on an ASEA shore power conversion system that provides seamless worldwide compatibility, complemented by both 220V and 110V shore power connections for flexible plug in use. Whether at anchor or underway, twin Kohler 80 kW generators furnish abundant, reliable electrical power, while a Condaria air conditioning system delivers precise climate control throughout the interior. Long range cruising is further supported by an Idromar watermaker rated at 132 GPH, supplying a continuous source of fresh water to match the vessel's voyaging ambitions.

Deck equipment

Ingenious deck engineering marries uncompromising functionality with serene luxury: heavy-duty Muir windlasses, paired with Muir capstans, drive two 180 HHP anchors dressed on 361 ft (110 m) chains to deliver absolute, reliable holding power. Boarding is effortless via a 15 ft telescopic hydraulic gangway, while a hydraulic transom door and removable stainless steel transom rails let the stern be reconfigured instantly to suit the moment. A clever convertible garage door descends to become a generous swim platform, enhancing access to the water, and aloft a teak sundeck, appointed with an elegant sundeck bar and a welcoming aft Jacuzzi, provides the perfect setting for relaxation and entertaining.

Engine room & mechanical

Twin MTU 12V2000 M91 diesel units, paired with ZF transmissions, provide refined and efficient propulsion, while Vosper Naiad Zero Speed Stabilizers deliver exceptional comfort both on passage and at anchor. Fine control in close quarters is afforded by a Koop Nautic bow thruster, fuel quality is maintained through an Alfa Laval fuel treatment system, and onboard waste management meets stringent standards via a Hamann waste treatment system. An air-conditioned engine control room, with its own dedicated access to the engine compartment, creates a cool, quiet space for monitoring and management, enhancing safety and ensuring operations run smoothly.

Safety equipment

Safety aboard is uncompromised, beginning with four SOLAS-approved liferafts primed for immediate launch and a comprehensive CCTV system — including a dedicated engine-room camera — that provides constant surveillance. An EPIRB and a SART emergency transponder stand ready to transmit urgent distress signals, while navigation is entrusted to the reliable Furuno NavNet system. Fire protection is centered on an ABS-compliant CO₂ fire suppression system, supported by portable fire extinguishers strategically placed throughout the yacht. On deck, life rings fitted with lighted buoys are at hand, and the inventory of life jackets includes correctly sized and fitted options for both adults and children, ensuring every guest can travel with peace of mind.

Tender & water toys

A Williams 445 Jet Tender ensures effortless transfers to shore, while two 2023 Sea-Doo Spark WaveRunners offer lively, nimble rides and a pair of Seabob F5S

units open up exquisite underwater exploration. A full complement of snorkeling equipment and water skis caters to guests of every ability, and inflatable towables—including a banana boat and a tube—provide instant, high-energy entertainment. The onboard tender garage is arranged to hold a 20-foot tender plus additional personal watercraft, allowing the entire fleet to be stowed securely, discreetly and primed for immediate deployment.

CONTACTS

Shestakov Yacht Sales is a brokerage company specializing in the sale and service of yachts worldwide. The company offers services for buying and selling both new and used motor yachts, sailing vessels, and luxury superyachts. They also provide yacht registration, insurance, technical maintenance, crew selection, and charter organization services across the U.S., Canada, Latin America, the Caribbean, and the Bahamas.

The founder and lead broker of the company is Andrey Shestakov, a licensed and certified expert with extensive experience in marine engineering and shipbuilding.

The company has an extensive network of partnerships with major yacht manufacturers worldwide and provides services in multiple languages, including Russian, Ukrainian, Spanish, and English. The office is in Dania Beach, Florida, USA.

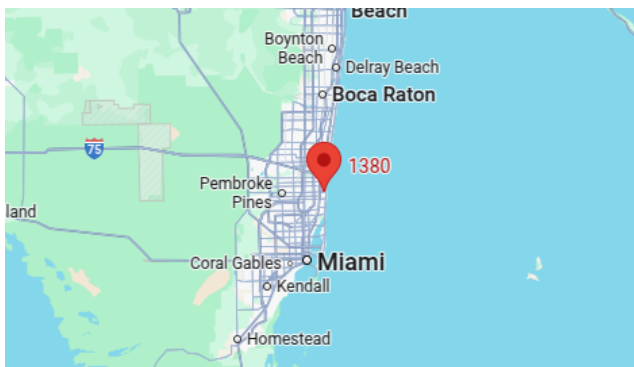
For more information and to view available yachts, you can visit the company's official website: <https://shestakovyachtsales.com>

Contact details

Phone: +1(954)274-4435

Email: andrey@shestakovyachtsales.com

Address



1380 Weeping Willow Way, Hollywood,
Florida 33019