

AMBAR - SANLORENZO



Builder: [Sanlorenzo](#)

LOA: 120' 0" (36.58 m)

Year Built: 2022

Beam: 24' 0" (7.60 m)

Model: SL120A

Max Draft: 22' 2" (6.75 m)

Price: \$12,700,000 USD Subject to change.

Cruising Speed: 23 Knots (26.47 MPH)

[See full listing on our website](#)

Location: Fort Lauderdale, United States

Max Speed: 27 Knots (31.07 MPH)

TABLE OF CONTENTS

OVERVIEW	3
SPECIFICATIONS	6
Basic Information	6
Dimensions	6
Speed, Capacities and Weight	7
Accommodations	7
Hull and Deck Information	7
Engine Information	8
GALLERY	9
DETAILED DESCRIPTION	17
CONTACTS	22

OVERVIEW

Step aboard AMBAR, the 2022 Sanlorenzo SL120A Asymmetric, a 120 foot performance motor yacht that embodies Italian artisanship, inventive architecture, and the presence of a true superyacht. She is a modern reading of the flybridge yacht, marrying the poise of a luxury cruiser with the internal volume and stature more commonly found on vessels approaching 40 meters. Born from Sanlorenzo's celebrated asymmetric widebody concept, this SL120A opens up unexpected breadth within the interior, creating intuitive circulation and a sense of scale that belies her length while remaining eminently practical and owner focused. As a planing superyacht, AMBAR demonstrates how intelligent layout elevates both comfort and capability, proving that smart design can rival sheer size.

With a shallow draft of about 6'9", AMBAR is especially suited to Bahamas cruising and island hopping, slipping into sheltered anchorages and low lying lagoons without compromise. Twin MTU 16V 2000 engines, each producing 2,637 hp, give her assured performance: an efficient 23 knot cruise and the ability to extend to approximately 27 knots when the moment calls for speed. The result is a performance motor yacht that moves swiftly yet serenely, comfortable along the U.S. East Coast, in the Caribbean, or across the Mediterranean.

Boarding from the aft, a calming sense of welcome takes hold. The teak clad cockpit is generous in scale yet restrained in expression, conceived as an outdoor living room rather than a formal terrace. Mornings stretch into leisurely coffee hours, lunches drift into the afternoon, and evenings incline gently toward the sea. Broad walkways lead naturally down to the beach club and tender garage—a genuine waterside hub where toys and tenders live as part of daily life. This is not a mere swim platform but a purposeful, well executed interface with the water, designed for use rather than display.

In the main salon the asymmetric concept reveals itself with subtle but transformative effect. Offsetting the side deck to port yields notable interior width and an openness that feels immediate and natural. Full height glazing invites daylight and an unbroken connection to the horizon, while the salon flows seamlessly into the dining area so the main deck reads as a single, relaxed, residential space. The result is a refined superyacht interior crafted for months aboard as readily as for a weekend escape.

The dining area to port retains an intimate quality while remaining visually linked to the rest of the deck, reinforcing a design language that celebrates shared spaces without erasing small moments of privacy. Inside and outside converse in the same terms of openness, movement, and effortless transition—an approach that privileges livability over strict formality.

Forward on the main deck, the full beam owner's suite is conceived as a private retreat. Separated from guest and crew thoroughfares, it achieves a level of privacy rare in this size class. Expansive windows frame the seascape, suffusing the suite with light and calm. A king berth, a comfortable lounge area, plentiful wardrobe space, and a finely detailed ensuite form a suite that feels more like a private apartment than a cabin. Direct forward access grants the owner independent freedom of movement—luxury defined by autonomy.

The raised pilothouse above signals that AMBAR was built for genuine passages. Superb sightlines, logically arranged systems, and a clean, professional helm create an environment equally suited to an experienced owner operator or a full crew. One deck higher, the flybridge unfolds under a protective hardtop as a flexible social stage, open to sea breezes and panoramic views. Dining, lounging, and sunning areas are composed so multiple groups may enjoy the deck simultaneously without ever feeling cramped, making this space as appealing underway as it is at anchor.

Down on the lower deck, guest accommodations continue the yacht's calm, understated palette. Cabins are substantial and designed for extended stays

rather than fleeting visits: higher ceilings, generous floor area, and consistent, high quality finishes foster an atmosphere of cohesion and ease, allowing guests to settle into the rhythm of life aboard a true luxury cruiser.

Forward of the guest areas, crew quarters and service zones are laid out with quiet efficiency to ensure smooth operations that do not intrude on guest tranquility. Comfortable crew accommodation, practical workspaces, and discreet circulation routes allow the yacht to run seamlessly behind the scenes, preserving the serenity that defines time on board.

AMBAR is the rare synthesis of artistry and utility: an SL120A Asymmetric that pairs widebody ingenuity with superyacht volume, a beach club lifestyle with a serious raised pilothouse command center, and flybridge freedom with the purposeful stance of a performance yacht. Built to be used, adored, and remembered, she is unmistakably Sanlorenzo—designed for living, made for passage.

SPECIFICATIONS

Basic Information

Category:
Motor yachts

Year Built:
2022

Sub category:
Motor Yacht

Country:
United States

Model Year:
2022

Dimensions

LOA:
120' 0" (36.58 m)

Max Draft:
22' 2" (6.75 m)

Beam:
24' 0" (7.60 m)

Speed, Capacities and Weight

Cruise Speed:

23 Knots (26.47 MPH)

Water Capacity:

1109.52 Gallons

Max Speed:

27 Knots (31.07 MPH)

Fuel Capacity:

3619.16 Gallons

Gross Tonnage:

280 Pounds

Accommodations

Crew Berths:

3

Hull and Deck Information

Hull Material:

Fiberglass and Plastic Yachts

Hull Designer:

Sanlorenzo

Deck Material:

GRP

Interior Designer:

N/A

Hull Configuration:

N/A

Engine Information

Engines:

2

Engine Type:

Inboard

Manufacturer:

MTU

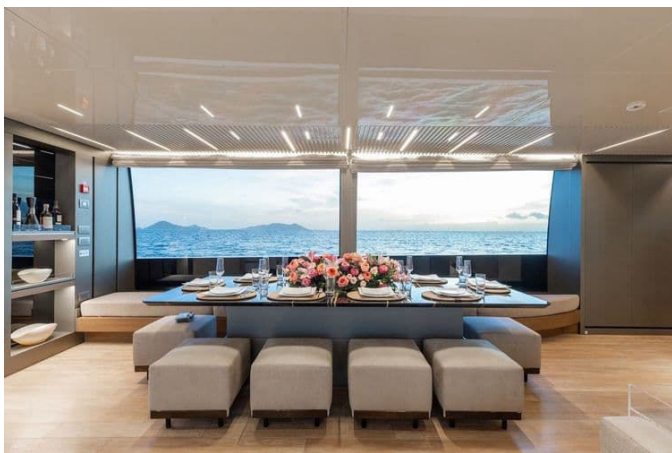
Fuel Type:

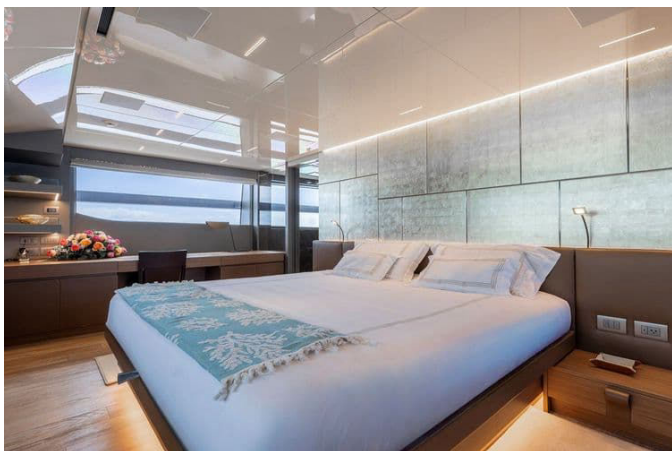
Diesel

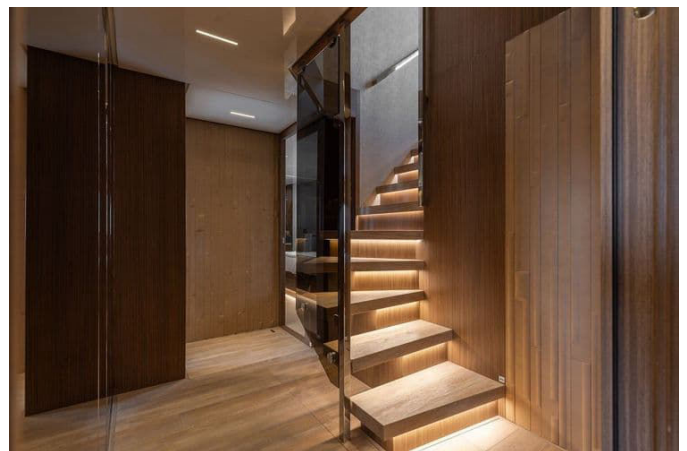
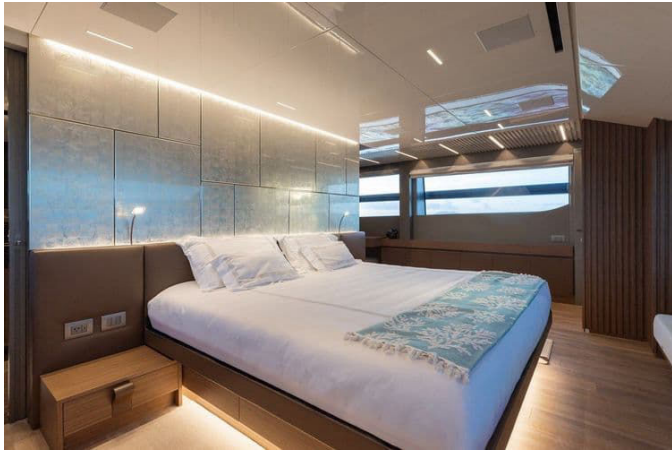
GALLERY



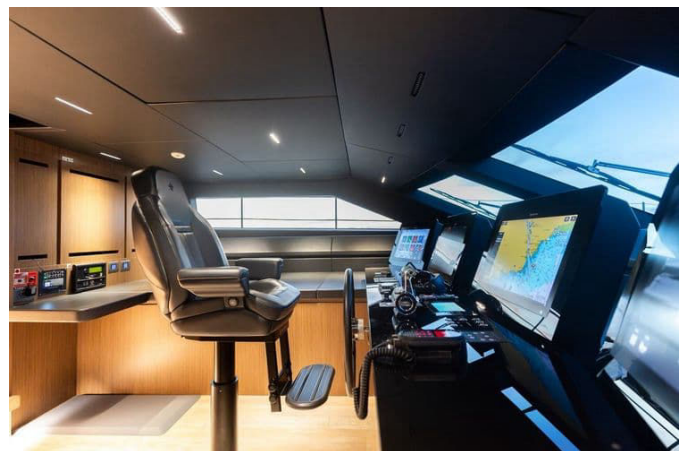














DETAILED DESCRIPTION

Key features

An extended warranty on the main engines is in place until March 2027 or 3,000 hours, underscoring confident reliability and giving exceptional reassurance for long range ownership. Significant upgrades completed in March 2026 include a comprehensive overhaul of the beach club door system with all electrical wiring renewed, every hydraulic pin replaced and all gaskets changed, a full service of the stabilizers with all seals and O rings renewed, and scheduled maintenance of the generator. At the same yard visit the hull received fresh antifouling, Prop Speed was applied to the running gear and new anodes were fitted, while in January 2026 a ceramic protective coating was applied and all windows were recaulked to preserve finishes and integrity. Key performance hardware has been thoughtfully upsized with larger stabilizer fins, an enlarged windlass and a higher capacity bow thruster to improve seakeeping and close quarters handling. The yacht's innovative asymmetric profile maximizes interior volume and strengthens the connection to the outdoors, complemented by a generous beach club and tender garage with folding wings and a salon side balcony, and low engine hours confirm a lightly used pedigree ready for immediate cruising.

General specifications

Built by Sanlorenzo in 2022, this SL120A motor yacht is a used GRP/composite vessel marrying an exterior design by Zuccon International Project with naval architecture and engineering by Sanlorenzo, resulting in a refined and seaworthy platform. She measures 36.92 m / 121'1" length overall with 30.30 m / 99'5" at the waterline, a 7.60 m / 24'11" beam, 2.05 m / 6'9" draft at full load and a construction height of 3.98 m / 13'1". Displacement is approximately 162

t at half load and approximately 175 t at full load, with gross tonnage of approximately 280 GT and a deadrise angle of 16°, combining substantial internal volume with efficient hull lines.

Accommodation

Thoughtfully arranged for extended cruising, the yacht accommodates ten guests in five guest cabins, each conceived to deliver comfort and privacy, while a professional crew of six is housed in three dedicated crew cabins to ensure discreet, round the clock service and efficient operation of the vessel's systems and guest requirements.

Machinery and performance

Power is delivered by twin MTU 16V 2000 M96L diesel engines rated at 2 × 2,637 HP (1,939 kW) at 2450 rpm, with approximately 930 hours recorded on both the port and the starboard engines, supporting confident reliability and low usage. Propulsion runs through ZF 5050A gearboxes with a 3.429:1 ratio and robust shaft drive turning Class "S" NiBrAl alloy propellers on Aquamet 17 shafts, while AISI 316 stainless steel rudders provide precise control. The yacht reaches a maximum speed of approximately 27 knots and cruises comfortably at approximately 23 knots, with fuel consumption of approximately 2 × 375 l/h at 2200 rpm, delivering both performance and efficient long range passage making.

Generators and electrical

Electrical autonomy is assured by two seventy kilowatt, 400Vac, 50Hz generators with the port generator showing 1682 hours and the starboard generator 1691 hours, supported by 400Vac / 125A shore power with

transformer and a seamless transfer system for shore/generator changeover to ensure uninterrupted service. A comprehensive battery suite—service, engine start and emergency—is backed by multiple automatic battery chargers and both 24Vdc and 12Vdc circuits, while emergency lighting is installed throughout the vessel to enhance safety and operational reliability.

Stabilizing and maneuvering

Electric stabilizer fins operate both at zero speed and underway to ensure exceptional comfort at sea and at anchor, while a forty five kilowatt electric bow thruster provides confident close quarters control during docking and tight maneuvers. An interceptors system refines performance and trim, and an advanced steer by wire steering system delivers precise, responsive handling to match the yacht's upgraded performance hardware.

Tankage

Long range practicality is assured by fuel carried in approximately 13,700 L main tanks supplemented by approximately 6,200 L day tanks, providing extensive cruising range and operational flexibility, alongside generous domestic capacities of approximately 4,200 L fresh water, approximately 2,350 L grey water and approximately 1,100 L black water to support extended periods aboard with comfort.

Hull and construction

The hull, decks and superstructure are built in GRP composite with vinylester resin lamination and a lightweight, rigid sandwich construction using a closed cell PVC core to deliver strength, stiffness and resistance to water ingress. Structural integrity is enhanced by a partial double bottom housing

structural tanks, three watertight bulkheads plus a collision bulkhead, and integrated side exhaust housings, while the hull is treated with anti fouling and features structural tanks fully integrated into the hull form for optimized strength and tankage distribution.

Climate control and ventilation

Onboard climate is mastered by a variable speed chilled water air conditioning plant with capacity of approximately 240,000 BTU/h, delivering independent temperature control to each area and a dedicated air treatment unit for the Owner's cabin, ensuring tailored comfort throughout. Engine room and technical ventilation systems complete a quietly efficient, yacht wide environmental control package that maintains comfort and system reliability in all conditions.

Firefighting and safety systems

Safety is engineered in depth with NOVEC fire suppression systems protecting the engine room, control room and the garage with both automatic and manual activation options, backed by a yacht wide fire detection network. An emergency diesel driven fire pump, fire hoses on deck and inside, a bilge pumping system with alarms, life rafts integrated into the superstructure, emergency escape hatches and portable extinguishers throughout the yacht provide comprehensive readiness and redundancy for a wide range of contingencies.

Navigation and electronics

In the wheelhouse dual 15.4" multifunction touch displays anchor a fully integrated navigation and control suite with autopilot, radar, GPS, VHF, a

rudder angle indicator and a dedicated touchscreen for engine and system monitoring, offering concise situational awareness. On the flybridge a multifunction display, autopilot, VHF and full engine and navigation controls offer commanding open air oversight for helming and maneuvering. For guest entertainment smart TVs are installed throughout guest areas, a multi zone audio system feeds integrated speakers in the salon, cabins and exterior spaces, iPad based centralized AV control streamlines operation, and distinct audio zones on the flybridge, in the cockpit and at the bow create atmospheric flexibility from sunrise to starlight.

Tender and garage

A versatile beach club integrates a tender garage accessed by an electro hydraulic door for effortless launch and recovery, equipped with a launching crane rated up to approximately 1,300 kg, tender chocks and a dedicated toy storage area for water sports equipment. Purpose built ventilation and a dedicated firefighting system safeguard the garage, ensuring safety, rapid turnaround and peace of mind between adventures.

CONTACTS

Shestakov Yacht Sales is a brokerage company specializing in the sale and service of yachts worldwide. The company offers services for buying and selling both new and used motor yachts, sailing vessels, and luxury superyachts. They also provide yacht registration, insurance, technical maintenance, crew selection, and charter organization services across the U.S., Canada, Latin America, the Caribbean, and the Bahamas.

The founder and lead broker of the company is Andrey Shestakov, a licensed and certified expert with extensive experience in marine engineering and shipbuilding.

The company has an extensive network of partnerships with major yacht manufacturers worldwide and provides services in multiple languages, including Russian, Ukrainian, Spanish, and English. The office is in Dania Beach, Florida, USA.

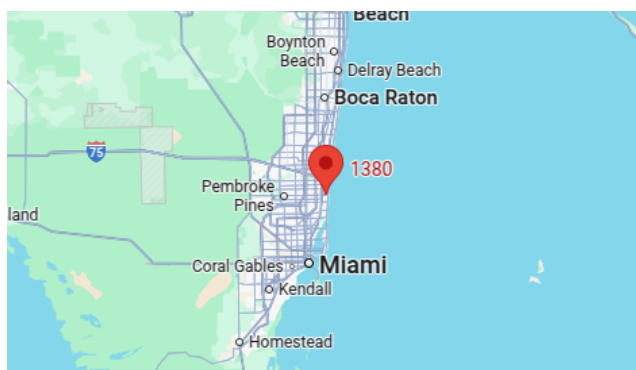
For more information and to view available yachts, you can visit the company's official website: <https://shestakovyachtsales.com>

Contact details

Phone: +1(954)274-4435

Email: andrey@shestakovyachtsales.com

Address



1380 Weeping Willow Way, Hollywood,
Florida 33019