

DREAMS - OCEAN ALEXANDER



Builder: [Ocean Alexander](#)

LOA: 120' 0" (36.58 m)

Year Built: 2021

Beam: 24' 0" (7.47 m)

Model: 37L

Max Draft: 22' 8" (6.92 m)

Price: \$17,900,000 USD Subject to change.

Cruising Speed: 17 Knots (19.56 MPH)

[See full listing on our website](#)

Location: Key Largo, United States

Max Speed: 20 Knots (23.02 MPH)

TABLE OF CONTENTS

OVERVIEW	3
SPECIFICATIONS	4
Basic Information	4
Dimensions	4
Speed, Capacities and Weight	4
Accommodations	5
Hull and Deck Information	5
Engine Information	5
GALLERY	6
DETAILED DESCRIPTION	28
CONTACTS	43

OVERVIEW

Poised and powerful, this 120 ft 2022-model Motor Yacht, launched in 2021 and lying in the United States, commands attention with a striking profile and confident stance. Her composite fiberglass construction and 24 ft beam deliver remarkable interior volume and unwavering stability, while sleek lines and refined detailing speak to a modern aesthetic tailored for luxury cruising. Twin MTU diesel-electric inboard engines carry her effortlessly to a smooth 17 kn cruise and up to 20 knots when you want to stretch her legs, all supported by a capacious 5,500 gallons of fuel for gratifying range and flexibility.

Step inside to a sanctuary of light and space, where an expansive salon flows naturally to open-air lounging and dining areas, inviting seamless indoor-outdoor living. Thoughtfully arranged private quarters welcome owners and guests with serene comfort, enhanced by seven beautifully appointed heads that elevate convenience during longer passages and lively weekends alike. Fine craftsmanship, tasteful textures, and a calm contemporary palette create an ambiance that feels both indulgent and inviting—an elegant expression of what the finest motor yachts are meant to be.

Purpose-built for extended escapes, this fiberglass Motor Yacht balances performance, efficiency, and quiet running with practical autonomy, including a generous 1,060 gallons of fresh water for days on the hook. Whether envisioned as a family retreat, a sophisticated entertainment platform, or a capable cruiser along America's storied coastlines, she offers the rare fusion of innovation and grace. Confident, composed, and effortlessly luxurious, she is ready to write her next chapter on the open water.

SPECIFICATIONS

Basic Information

Model Year:
2022

Country:
United States

Year Built:
2021

Dimensions

LOA:
120' 0" (36.58 m)

Max Draft:
22' 8" (6.92 m)

Beam:
24' 0" (7.47 m)

Speed, Capacities and Weight

Cruise Speed:
17 Knots (19.56 MPH)

Water Capacity:
1060 Gallons

Max Speed:
20 Knots (23.02 MPH)

Fuel Capacity:
5500 Gallons

Gross Tonnage:
278 Pounds

Accommodations

Total Heads:

7

Hull and Deck Information

Hull Material:

Fiberglass and Plastic Yachts

Hull Designer:

N/A

Deck Material:

Fiberglass

Interior Designer:

N/A

Hull Configuration:

N/A

Engine Information

Engines:

2

Engine Type:

Inboard

Manufacturer:

MTU

Fuel Type:

Diesel/Electric

GALLERY



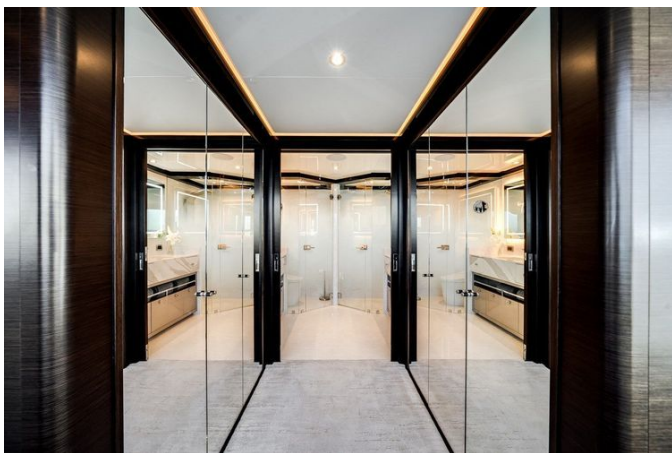
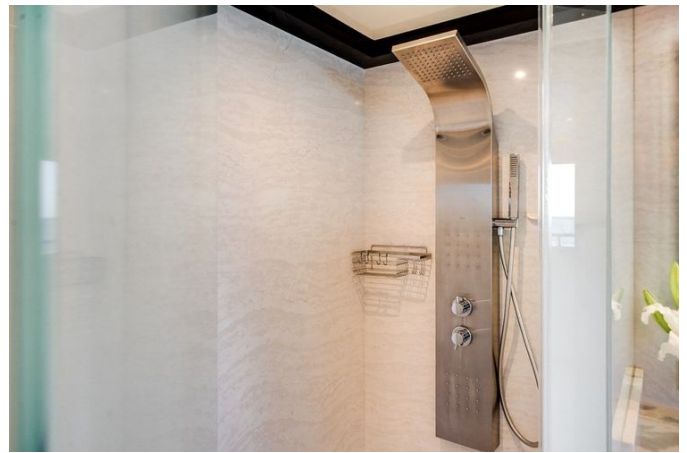




















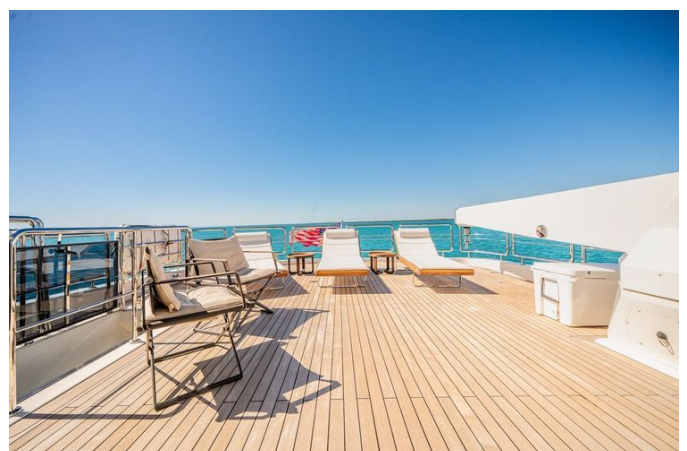








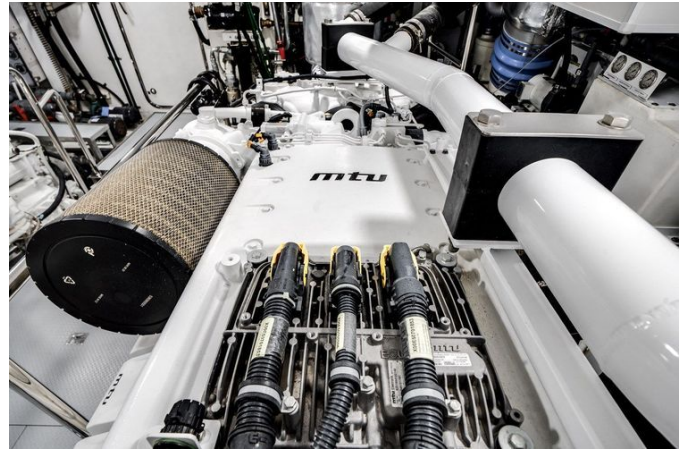














DETAILED DESCRIPTION

Description

“Dreams” will be on display during the Palm Beach International Boat Show, March 25–29, at the Ocean Alexander display at the end of Ramp Four. A 2022 Ocean Alexander 37L of exceptional pedigree, this luxury yacht delivers remarkable volume, refined craftsmanship, and world class comfort across every deck. Five spacious staterooms with en suite heads, including a full beam, on deck master framed by breathtaking 180 degree panoramic windows, create a private retreat to rival the finest waterfront residences.

Designed for both sophisticated entertaining and extended cruising, she offers expansive indoor and outdoor living areas, a beach club with fold down transom, a skylounge with a day head, and a sun deck crowned by a five person Jacuzzi and custom sun pad. Multiple alfresco lounges, formal dining for ten, and a fully equipped gourmet galley elevate life on board to a superyacht standard.

Technical excellence underpins every experience on “Dreams,” with an Atlas Marine System 50/60 Hz power converter, dual Starlink connectivity for global high speed internet, and a Spot Zero water purification system ensuring seamless operations and modern cruising convenience. Powered by twin MTU 2600 hp V16 engines and twin Kohler 55 kW generators, and featuring advanced Zero Speed stabilization, she delivers confidence, performance, and long range capability.

With exceptional crew accommodations, extensive storage, and premium finishes throughout, “Dreams” represents a rare opportunity to own a high volume, turnkey luxury vessel crafted for discerning owners who demand space, sophistication, and uncompromising quality.

Recent services

Impeccably maintained for assured performance, this yacht benefits from engines service completed 7/2025 alongside generators service in 7/2025. The Side-Power Zero Speed stabilizers/thrusters were serviced in 7/2025, with comprehensive bow and stern thruster gear leg maintenance carried out the same month. The annual haul-out service in 7/2025 addressed the running gear—props and shafts—with zincs replaced. A bottom job was completed 6/2025, and the Atlas annual service was performed 4/2025.

Warranty

An extended MTU warranty remains in effect through February 2027, providing added assurance for the yacht's propulsion system.

Highlights

This yacht showcases five staterooms with en-suite heads, crowned by an on-deck master stateroom wrapped in sweeping 180-degree windows. Performance comes from twin MTU V16 engines delivering 2,600 hp with 1,025 hours, complemented by a plug-in wired engine remote for the MTUs, while precision handling is assured by hydraulic bow and stern thrusters. Electrical autonomy and versatility are provided by twin Kohler 55 kW generators showing 1,720 hours and an Atlas Marine System 50/60 Hz power converter, alongside two Dometic 1,800 GPD watermakers with Spot Zero for pristine freshwater onboard. Entertainment and connectivity are seamless with a Control 4 AV system, one Starlink and one High Performance Starlink. Lifestyle amenities abound, including a skylounge with day head, a fold-out bulwark balcony serving the portside dining area, a five-person lighted Jacuzzi with custom sun pad on the sundeck, and a beach club with a flip-down transom

door, while seven LED underwater lights elegantly illuminate the waterline.

Exterior

Purposeful elegance defines the exterior, where seamless connectivity meets commanding capability with one Starlink and one High Performance Starlink system complemented by a Garmin 25KW open array radar for confident navigation. Precision maneuvering comes standard with a bow thruster rated at 58HP and a stern thruster at 42HP, while KVH Tracvision UHD7 Satellite TV Domes elevate entertainment across every deck. Practical power is at hand with a 3,000 lbs. crane on the bridge deck and aft-deck transom structural reinforcement for towing, and anchoring is effortlessly refined by a hands-free anchor chain wash system and two hydraulic 350 lbs. anchors with 250' chain. Signature touches include a Buell heavy-duty three-trumpet horn, two stainless steel flagpoles at the bow and stern, seven LED underwater white lights, and flush mounted deck lights, all safeguarded by a dedicated lightning protection system. Awareness and security are enhanced by three marine cameras on the aft deck, while custom canvas covers preserve all exterior cabinetry on the aft deck, bridge deck, and bow. The experience is framed by oversized walkaround teak side decks and a crew quarters access door on the port side, all finished in an off-white Alexaseal painted exterior over a finely balanced semi-displacement hull.

Beach club

At the water's edge, the beach club opens with a flip-down transom that extends your private haven over the sea, inviting effortless transitions from lounging to launch. Settle into the L-shaped settee and enjoy a cabinet-appointed wet bar with refrigerator and ice maker, ensuring refreshments are always within reach. Dedicated air conditioning keeps the

space perfectly tempered, while a 40-inch TV elevates open-air entertainment. Underfoot, a rich teak deck completes this refined waterside retreat.

Aft deck

An elevated C-shaped seating area with split tables on each side anchors the space, paired with a stone-topped wet bar complete with sink, refrigerator, and icemaker to keep refreshments within easy reach. Overhead, a custom ceiling feature with indirect lighting and a dimmer for the main ceiling lights sets the ambiance, while a flip-down forty-inch TV brings effortless alfresco entertainment. Safety and access are thoughtfully addressed with stainless steel transom gates for pet and child protection, complemented by side boarding gates and a Marquipt boarding ladder installed at the recessed starboard gunwale with teak. Practical enhancements include custom canvas covers, compressed air, a plug-in wired engine remote for the MTUs, and both searchlight and spreader lights. For confident handling, there are two 1,700 W, 24 VDC motor capstans on the aft deck with foot switches, and the transom is reinforced for towing a tender up to 20,000 lbs. All of it is beautifully framed by a teak deck.

Salon

The salon invites relaxation with a custom L-shaped sofa to port paired with a custom-designed coffee table, complemented by two armchairs for versatile seating. To starboard, a stone countertop wet bar integrates a refrigerator and ice maker, while a full-height electric sliding door with toe-kick remote opening provides effortless access. Comfort and ambiance are easily tailored via electric shades with remote control and a dimmer for the main ceiling lights, and entertainment is centered around a 55-inch LED TV.

Dining

Designed for effortless entertaining, the dining area features a room-divider cabinet dedicated to flatware, dinner service, and glassware, complemented by OA flatware and dinner china in a set for ten and OA water, white wine, red wine, and champagne glasses in a matching set for ten. At its heart stands a custom dining table with ten chairs, anchored beneath a refined coffered ceiling, while full-height electric glass sliding doors to port and starboard invite sea breezes and panoramic views. A sophisticated wet bar with sink serves as the hub for refreshments, with a KitchenAid drawer refrigerator and ice maker positioned beneath, joined by a Sub-Zero wine cooler for perfectly chilled vintages. Comfort and ambiance are easily tailored with electric shades operated by remote control and a dimmer for the main ceiling lights, and a fold-out bulwark balcony to port extends the experience seamlessly to the open air.

Day head - main deck

The main-deck day head is finished with stone countertops and a refined vanity that integrates a sink with a storage shelf below, paired with a mirror to enhance light and space. A Tecma toilet delivers dependable performance, while an exhaust fan ensures discreet, efficient ventilation for lasting comfort.

Galley

Thoughtfully designed for both culinary ambition and easy entertaining, the galley showcases sleek storage cabinetry with hidden hinges set against stone countertops and a black backsplash, all bathed in natural light from a large portside window. A Franke® stainless steel kitchen sink anchors the workspace, while a Vent a Hood® above the cooktop ensures clean, quiet

ventilation. Cooking performance is elevated by a Wolf® 36-inch induction cooktop paired with a Wolf® 30-inch electric oven and a Wolf® 30-inch electric steam oven, complemented by a Wolf® microwave with trim kit for swift convenience. Cold storage is abundant and beautifully integrated, featuring a Sub-Zero® 36-inch built-in refrigerator/freezer and a separate Sub-Zero® 36-inch built-in freezer. Clean-up is effortless with an ASKO® dishwasher, Whirlpool® trash compactor, and Whirlpool® garbage disposal. A portside door for provisioning streamlines every embarkation, turning galley logistics into a seamless, shore-to-ship affair.

Master stateroom - on deck

This on-deck sanctuary centers on a king-size bed dressed with two sets of OA bed linens and flanked by two nightstands with stone countertops, creating a refined focal point for rest. A vanity table with stool and a cushioned settee invite leisurely moments, while sweeping 180-degree windows bathe the space in natural light. Ambience is effortlessly tailored with dimmable main ceiling lights and electric shades with remote control, and entertainment is at hand with a 50-inch LED TV.

Master en suite head

The master en suite head is a serene retreat centered around a custom large shower, with heated floors and stone countertops elevating every moment on board. A separate TOTO toilet ensures privacy, while two vanities with sinks and a storage shelf below offer thoughtful functionality beneath lighted mirrors for impeccable clarity. Fresh air flows effortlessly through exhaust fans, and wardrobe needs are met by three dedicated closet areas, complemented by a hidden safe for valuables discreetly positioned within a closet.

Lower companionway/walk-in storage area

Thoughtfully appointed beneath the lower companionway, this forward walk-in storage area is designed for effortless cruising, featuring a KitchenAid drawer refrigerator and ice maker set under the counter for instant refreshments, along with direct entry to the spacious forward walk-in zone. Practicality meets durability with a commercial-grade washer and dryer, while a full-height freezer pairs with a dedicated sink to streamline provisioning and cleanup. Abundant storage shelves and cabinets keep gear and galley essentials impeccably organized and always within easy reach.

Port VIP stateroom

An inviting retreat, the Port VIP stateroom centers on a queen-size bed with storage drawers, dressed in two sets of OA bed linens and flanked by two nightstands. A vanity/dressing table offers a refined space to prepare for the day, while a hanging locker with lights keeps wardrobe essentials neatly stowed. Sunlight pours through a large window with in-glass portlight, and privacy is effortless via electric shades with remote control. As evening falls, dimmable main ceiling lights set the mood, while a fifty-inch LED TV delivers immersive entertainment.

Port VIP en-suite head

Stone countertops set a refined tone in the port VIP en-suite head, where a vanity with sink and a storage shelf below keeps essentials neatly organized. A mirror enhances the sense of space, while the shower offers effortless daily comfort, complemented by a Tecma toilet for dependable performance. An exhaust fan maintains fresh airflow and a dry, inviting environment.

Starboard VIP stateroom

This inviting retreat features a queen-size bed with storage drawers, dressed in OA bed linens supplied in a set of two. Flanking the berth are two nightstands, while an elegant vanity and dressing table provide a refined space to prepare for the day. A hanging locker with integrated lighting keeps wardrobe essentials neatly organized. Natural light pours through a large window with an in-glass portlight, and privacy is effortless thanks to electric shades operated by remote control. Dimmable main ceiling lights tailor the ambiance to every mood, and a 50-inch LED TV delivers crisp entertainment at day's end.

Starboard VIP en-suite head

Refined and practical, this private head is appointed with a vanity with sink and a storage shelf below, complemented by a mirror for effortless preparation. A shower offers everyday convenience, while a Tecma toilet and an exhaust fan ensure comfort and efficient ventilation.

Port guest stateroom

The port guest stateroom offers two twin-size beds that convert to a queen, dressed in two sets of OA bed linens for refined comfort. A nightstand with drawers keeps essentials neatly stowed, complemented by a hanging locker with lights for illuminated wardrobe organization. Sunlight filters through a large window with an in-glass portlight, while electric shades with remote control provide effortless privacy. For entertainment, a 32-inch LED TV completes this serene retreat.

Port guest en-suite head

Thoughtfully appointed, the port guest en-suite head is finished with elegant stone countertops and a refined vanity featuring an integrated sink with a storage shelf below. A mirror adds clarity and brightness, while the shower offers effortless daily comfort. A Tecma toilet delivers dependable performance, and an exhaust fan maintains fresh, dry air throughout.

Starboard guest stateroom

Thoughtfully appointed, the starboard guest stateroom offers two twin-size beds that seamlessly convert to a queen, dressed in OA bed linens for two. A nightstand with drawers keeps essentials close at hand, while a hanging locker with lights provides illuminated wardrobe space. Natural light pours through a large window with in-glass portlight, and privacy is effortlessly managed by electric shades with remote control. Entertainment is at your fingertips with a 32-inch LED TV.

Starboard guest en-suite head

Thoughtfully appointed for comfort and style, the starboard guest en-suite head showcases elegant stone countertops paired with a vanity featuring an integrated sink and a convenient storage shelf below. A generous mirror amplifies light and space, while the shower offers a refreshing retreat. The Tecma toilet delivers dependable performance, and an exhaust fan quietly promotes fresh airflow throughout the space.

Helm

Command with confidence from a helm engineered for absolute clarity and

control, anchored by three 32" Garmin 8700 Series Black Box touch screens complemented by a Garmin GRID remote input device installed on the helm chair. Navigation and situational awareness are heightened by a Garmin 25 kW open array radar, a Simrad autopilot, a Garmin VHF with card reader, a Garmin black box sounder, and Garmin AIS with NMEA GPS, all fully integrated for seamless operation. Visual monitoring is comprehensive, with three marine cameras on the aft deck and two in the engine room, each displayed on the Garmin screens for instant oversight. Power management is centralized through the Octoplex electrical safety and security control system, which governs all AC and DC breakers, while ride quality and maneuverability are expertly managed via controls for the SidePower Zero Speed stabilizers and the hydraulic bow and stern thrusters. Entertainment and connectivity are underway-ready with the KVH TracVision UHD7 satellite TV antenna, traditional navigation remains precise with a Ritchie 5" compass, and visibility is assured by a heavy-duty commercial grade pantograph windshield wiper and washer, aided by a red light for nighttime running. Comfort and ergonomics are equally prioritized, with three custom leather helm chairs featuring diamond stitching and the OA logo, a captain's desk with chair, a full-height storage locker, and Portuguese bridge access doors to port and starboard that streamline movement around the decks.

Portuguese bridge

Positioned directly ahead of the helm, the Portuguese bridge offers a secure full walkaround with access doors to port and starboard, ensuring effortless movement and sheltered transitions along the foredeck. Forward seating sits just in front of the helm for relaxed passage-making and conversation, complemented by additional seating to port and starboard that invites guests to settle in and take in the views.

Skylounge

A refined retreat designed for effortless enjoyment, the skylounge features electric shades operated by remote control and a full-height electric sliding door with toe-kick remote opening for smooth, hands-free access. A custom couch paired with a coffee table anchors the space, complemented by two armchairs and a dedicated card table with chairs for relaxed gatherings. Entertaining is enhanced by an under-counter KitchenAid drawer refrigerator and ice maker, while a dimmer for the main ceiling lights lets you set the perfect mood. A 65-inch LED TV completes the setting with crisp, cinematic viewing.

Skylounge day head

Elegantly appointed for effortless day use, the skylounge day head features stone countertops and a sleek vanity with an integrated sink and a storage shelf below, complemented by a polished mirror that brightens the space. A Tecma toilet provides dependable performance, while the dedicated exhaust fan preserves fresh airflow and enduring comfort.

Bridge deck

The bridge deck is conceived as a refined alfresco lounge, where to port four exterior stainless steel stools line a stone-topped wet bar complete with sink, refrigerator, and icemaker, all thoughtfully sheltered beneath the Sundeck. Adjacent, a 32" Electric-Chef electric barbecue invites open-air entertaining under the same cover, while custom glass windscreens to port and starboard temper the breeze for comfort underway or at anchor. To starboard, C-shaped seating with a dining table forms an inviting social hub, and a flip-down 40" TV turns the space into a cinema, both likewise protected by the Sundeck; a

dimmer for the main ceiling lights sets the perfect ambiance throughout. Three lounge chairs beckon for sunning, and a plug-in wired engine remote for the MTUs adds convenient control when needed. Aft, a 3,000-pound crane handles tender and toy deployment with confidence, complemented by a searchlight and spreader lights for superior visibility. Teak decking underfoot underscores the yacht's craftsmanship, while a sixteen-person life raft stands ready for safety. Thoughtfully engineered seawater and compressed air supply with 110V outlet supports an inflatable slide or other water toys, and a freshwater washdown keeps the deck pristine. Custom canvas covers protect furnishings when not in use, and removable stainless steel poles with sunshade expand the area of cool, sheltered relaxation.

Sundeck

The sundeck invites open-air indulgence with a stone-topped wet bar complete with sink, refrigerator and icemaker, while C-shaped seating with a large table sets the stage for relaxed dining and conversation. A five-person lighted Jacuzzi with a custom sun pad becomes the centerpiece for twilight soaking, supported by a 27KW commercial water heater for the Jacuzzi that ensures rapid, reliable heating. Ambience is effortlessly tailored via a dimmer for the main ceiling lights, and custom canvas covers protect every detail when not in use. Entertainment comes courtesy of an LED fifty-inch TV, all set against the timeless elegance of a teak deck.

Bow

A welcoming C-shaped seating with table sets the stage for relaxed gatherings, subtly illuminated after dusk by two concealed pop-up lights. Removable stainless steel poles deploy a generous sunshade, while custom canvas covers protect the area when not in use. Anchoring is effortless thanks to dual

hydraulic anchor windlasses with remote foot switches, complemented by a hands-free anchor chain wash system and a fresh water wash down for swift, tidy operations.

Av

Seamlessly orchestrated by a Control 4 System, the yacht's AV suite delivers effortless control, resilient connectivity, and cinematic entertainment throughout. Dual satellite internet solutions—one Starlink and one High Performance Starlink—combine with KVH Tracvision UHD7 satellite TV domes and Direct TV for dependable coverage at sea, while vigilant monitoring is ensured by three marine cameras on the aft deck and two marine cameras in the engine room, all fully integrated.

Entertainment is beautifully curated in every space: the salon centers around an LED 55-inch TV, the MSR features an LED 50-inch display, and the sky lounge elevates movie nights with an LED 65-inch screen. Guests enjoy an LED 50-inch TV in the VIP stateroom and an LED 32-inch TV in the guest stateroom, complemented by LED 32-inch TVs in the crew quarters and the captain's cabin. Alfresco viewing comes via flip-down 40-inch TVs on both the aft bridge deck and the aft deck, a commanding LED 50-inch TV on the sky deck, and a 40-inch TV in the beach club.

Engine room

Immaculately organized and designed for endurance, the engine room is anchored by twin MTU V16 engines rated at 2,600 hp with 1,025 hours, complemented by two Kohler 55 kW generators showing 1,720 hours to provide steadfast, efficient power underway or at anchor. Climate control is assured by a Dometic chilled-water air-conditioning system augmented by dedicated engine-room air conditioning, while a lube oil change system

services both engines and generators via a 120-gallon lube tank to streamline maintenance. Fuel management is robust and secure with marine-grade aluminum fuel tanks fitted with sight gauges, an Oberdorfer fuel transfer pump, and a Gulfcoast fuel polishing system, and onboard compressed air adds valuable versatility for service and operations.

Fresh-water and wastewater needs are handled with equal confidence by the Headhunter fresh-water system and a Headhunter sewage treatment system rated at 600 GPD, further enhanced by a Dometic 1,800 GPD water maker with Spot Zero for pristine water quality. Domestic comfort is supported by two 50-gallon hot-water heaters, while visibility and oversight are strengthened by two marine cameras. Ventilation remains optimal thanks to Delta-T intake and exhaust fans with variable frequency drives and moisture eliminators, and precise handling is delivered by a Twin Disk hydraulic steering system. Safety and shore power are expertly covered by a Fireboy fire extinguisher system and an Atlas Marine System 50/60 Hz power converter, along with two 100 AMP Cable Master units equipped with 120-foot cords for effortless cable management.

For extended cruising, intelligent redundancy includes a second A/C seawater pump, a second A/C circulation pump, a second freshwater pump, a second treatment system, and a second water maker, ensuring the yacht's critical hotel and propulsion systems remain reliable far from port.

Crew quarters

Designed for professional efficiency and extended voyages, the crew quarters feature a captain's cabin with private head alongside two hi-lo bunk cabins, complemented by a second head with shower for added convenience. A compact yet capable kitchenette with sink, microwave, and refrigerator supports round-the-clock service, while a settee table with storage underneath offers a practical gathering space. For laundry demands there is a second set

of commercial-grade washer and dryer, and maintenance is streamlined by a dedicated stainless-steel workbench with vise, Snap-on tool chest, and additional storage. Access is effortless via the port-side door to the crew quarters, and all vital systems are centrally governed by the Octoplex touchscreen electrical safety and security control system managing all AC and DC breakers.

CONTACTS

Shestakov Yacht Sales is a brokerage company specializing in the sale and service of yachts worldwide. The company offers services for buying and selling both new and used motor yachts, sailing vessels, and luxury superyachts. They also provide yacht registration, insurance, technical maintenance, crew selection, and charter organization services across the U.S., Canada, Latin America, the Caribbean, and the Bahamas.

The founder and lead broker of the company is Andrey Shestakov, a licensed and certified expert with extensive experience in marine engineering and shipbuilding.

The company has an extensive network of partnerships with major yacht manufacturers worldwide and provides services in multiple languages, including Russian, Ukrainian, Spanish, and English. The office is in Dania Beach, Florida, USA.

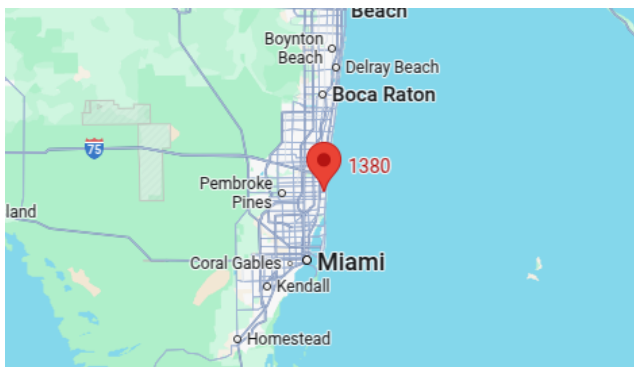
For more information and to view available yachts, you can visit the company's official website: <https://shestakovyachtsales.com>

Contact details

Phone: +1(954)274-4435

Email: andrey@shestakovyachtsales.com

Address



1380 Weeping Willow Way, Hollywood,
Florida 33019